

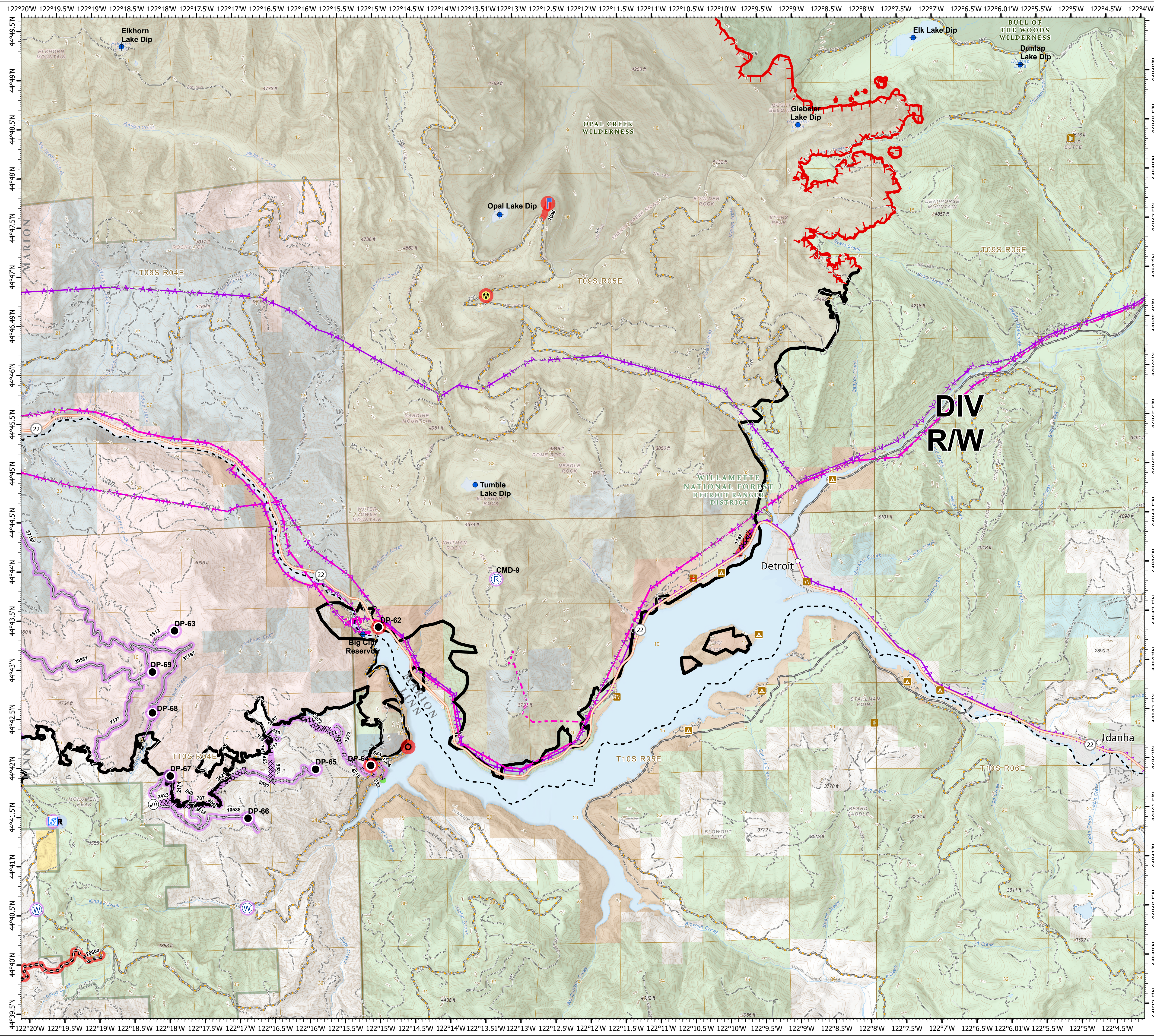
Suppression Repair

Beachie Creek
ORWIF-200299
Riverside
ORMHF-000859
10/04/20
Page: 15

- Repair Point Status**
- Repair Needed
 - No Repair Needed
 - Unknown
- Repair Line Status**
- Completed - Inspected
 - Repair Needed
 - Unknown
- FC Point Type**
- Culvert
 - Drop Point
 - Hazard
 - Repeater
 - Resource Location
 - Stream Crossing
 - Water Source
 - Water Development or Draft Site
- FC Line Type**
- Road as Completed Line
 - Road as Completed Line
 - Road as Completed Line
 - Planned Fire Line
 - Other
 - Completed Hand Line
 - Completed Hand Line
 - Completed Hand Line
 - Completed Hand Line
 - Completed Hand Line
 - Completed Hand Line
 - Completed Hand Line
 - Completed Dozer Line
 - Completed Dozer Line
 - Completed Dozer Line
 - Completed Dozer Line
 - Completed Dozer Line
 - Completed Dozer Line
 - Completed Dozer Line
 - Access or Improved Road
 - Access or Improved Road
 - Access or Improved Road
 - Access or Improved Road
 - Access or Improved Road
 - Access or Improved Road
 - Access or Improved Road
- Legend:**
- Repeater
 - Resource Location
 - Stream Crossing
 - Water Source
 - Water Development or Draft Site
 - Contained Line
 - Completed Dozer Line
 - Completed Hand Line
 - Road as Completed Line
 - Access or Improved Road
 - Planned Fire Line
 - Planned Secondary Line
 - Aerial Hazard
 - Uncontrolled Fire Edge
 - BPA Transmission Lines
 - Wildfire Daily Fire Perimeter
 - Fire Station
 - Campground
 - Ranger Station
 - Cabin
 - Trailhead
 - Picnic Area
 - City, Town, or Community
 - State Highway
 - County Road
 - Intermediate road
 - Minor road
 - Decommissioned or Closed
 - Rivers and Streams
 - Lake, Pond or Reservoir
 - County Boundary
 - City Limits
 - Ranger District Boundaries
 - Forest Service Wilderness Area
 - Bureau of Land Management
 - U.S. Forest Service
 - Other Federal
 - State
 - Local Government
 - Private/Unknown

FC Point Type	Repair Status	Repair Comments	Label
Culvert	Repair Needed	BAER Alert: burnt out plastic culvert. 24" x 36" replacement needed. Asphalt surfacing. 10 CY aggregate	
Drop Point	Repair Needed	Pull flagging, signs, toilets.	DP-62
Drop Point	Repair Needed	Remove slash piles and flagging.	DP-64
Drop Point	Unknown		DP-63
Drop Point	Unknown		DP-65
Drop Point	Unknown		DP-66
Drop Point	Unknown		DP-67
Drop Point	Unknown		DP-68
Drop Point	Unknown		DP-69
Hazard	Repair Needed	Scaling? Excavator?	
Lookout	Repair Needed		
Repeater	Unknown		CHD-9
Resource Location	No Repair Needed		
Stream Crossing	Unknown		
Water Development or Draft Site	Unknown		
Water Source	Unknown		
Water Source	Unknown		

FC Line Type	Repair Status	Repair Comments	Length Feet
Road as Completed Line	Unknown		730
Road as Completed Line	Unknown		791
Road as Completed Line	Unknown		1304
Road as Completed Line	Unknown		4715
Planned Fire Line	Unknown		2687
Other	Repair Needed	Cover with brush. Pull flagging	1046
Completed Hand Line	Unknown		319
Completed Hand Line	Unknown		453
Completed Hand Line	Unknown		588
Completed Hand Line	Unknown		654
Completed Hand Line	Unknown		2063
Completed Hand Line	Unknown		2174
Completed Hand Line	Completed - Inspected	waterbars installed on 9/22 by Richardson and Hogansen	232
Completed Dozer Line	Unknown		317
Completed Dozer Line	Unknown		787
Completed Dozer Line	Unknown		1266
Completed Dozer Line	Unknown		2421
Completed Dozer Line	Unknown		2423
Completed Dozer Line	Unknown		3072
Completed Dozer Line	Repair Needed	Waterbar as appropriate and seed roads, cut banks and entrances off of Hwy 22. Approximately 15 water bars will be needed. Recommend mini or medium sized excavator. Trash left behind by CPI including old telephone poles, insulators, wire, beverage bottles, food wrappers, etc.	1747
Access or Improved Road	Unknown		1273
Access or Improved Road	Unknown		1512
Access or Improved Road	Unknown		3518
Access or Improved Road	Unknown		5587
Access or Improved Road	Unknown		7177
Access or Improved Road	Unknown		10538
Access or Improved Road	Unknown		20581
Access or Improved Road	Unknown		37167



0 0.5 1 2 Miles

1:33,000 - 10/3/2020 2:00
Acres from GIS
North American 1983 Datum, LatLong Grid

