

Suppression Repair

Beachie Creek
ORWIF-200299
Riverside 6
10/04/20
Page: 6

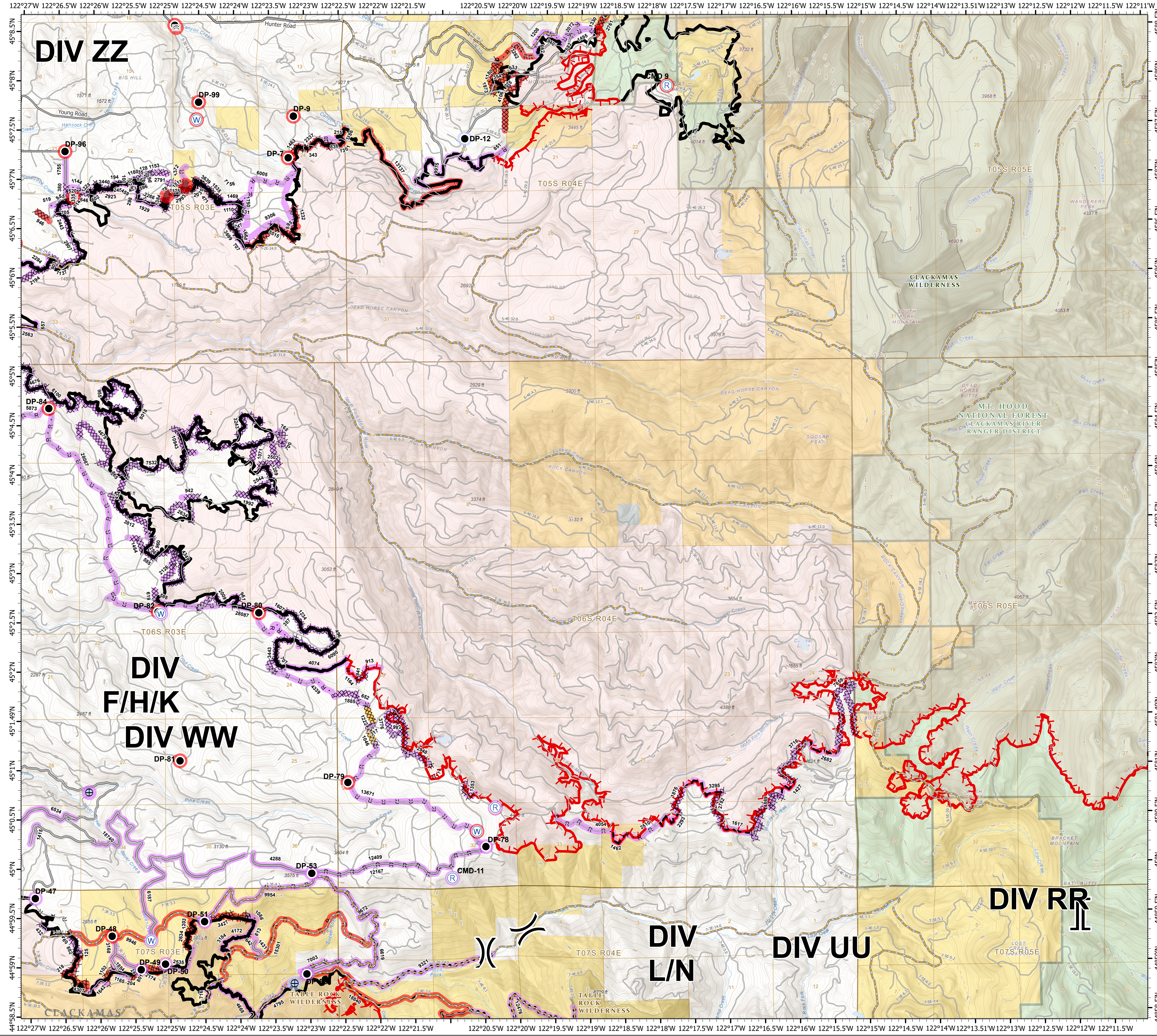
- Repair Point Status**
- Repair Needed
 - No Repair Needed
 - Unknown
- Repair Line Status**
- Completed - Ready for Inspection
 - Repair Needed
 - Unknown
- FC Point Type**
- Bridge
 - Drop Point
 - Dozer Push
 - Repeater
 - Water Source
 - Water Development or Draft Site
- Value at Risk**
- ⊗ Division Break
 - ⊗ Branch Break
 - Contained Line
 - ⊗ Completed Dozer Line
 - ⊗ Completed Hand Line
 - ⊗ Road as Completed Line
 - Access or Improved Road
 - Line Break Completed
 - Planned Fire Line
 - Planned Secondary Line
 - Uncontrolled Fire Edge
 - Wildfire Daily Fire Perimeter
 - County Road
- Intermediate road**
- Minor road**
- Decommissioned or Closed**
- Rivers and Streams**
- Lake, Pond or Reservoir**
- County Boundary**
- Ranger District Boundaries**
- BLM Wilderness Area**
- Forest Service Wilderness Area**
- Bureau of Land Management**
- U.S. Forest Service**
- State**
- Private/Unknown**

| FC Point Type | Repair Status | Repair Comments | Label |
|---------------|---------------|---|------------|
| Bridge | Repair Needed | | Bridge Out |
| Drop Point | Repair Needed | | DP-12 |
| Drop Point | Repair Needed | | DP-2 |
| Drop Point | Repair Needed | Richardson: 0.25 acre of disturbed compacted bare soil. Seed, straw, cover with slash. Possible decompack with excavator if available | DP-48 |
| Drop Point | Repair Needed | | DP-7 |
| Drop Point | Repair Needed | | DP-79 |
| Drop Point | Repair Needed | | DP-80 |
| Drop Point | Repair Needed | | DP-81 |
| Drop Point | Repair Needed | | DP-82 |
| Drop Point | Repair Needed | | DP-84 |
| Drop Point | Repair Needed | | DP-9 |
| Drop Point | Repair Needed | | DP-96 |
| Drop Point | Repair Needed | | DP-99 |

| FC Point Type | Repair Status | Repair Comments | Label |
|---------------------------------|------------------|-----------------|--------|
| Drop Point | Unknown | | DP-47 |
| Drop Point | Unknown | | DP-49 |
| Drop Point | Unknown | | DP-50 |
| Drop Point | Unknown | | DP-51 |
| Drop Point | Unknown | | DP-52 |
| Drop Point | Unknown | | DP-53 |
| Drop Point | Unknown | | DP-78 |
| Repeater | Repair Needed | | CMD-9 |
| Repeater | Unknown | | CMD-11 |
| Repeater | Unknown | | CMD-10 |
| Value at Risk | Repair Needed | | |
| Water Development or Draft Site | No Repair Needed | | |
| Water Development or Draft Site | Unknown | | |
| Water Source | Repair Needed | | |
| Water Source | Unknown | | |
| Water Source | Unknown | | |

| FC Line Type | Repair Status | Repair Comments | Length Feet |
|------------------------|---------------|---|-------------|
| Road as Completed Line | Unknown | | 194 |
| Road as Completed Line | Unknown | | 245 |
| Road as Completed Line | Unknown | | 298 |
| Road as Completed Line | Unknown | | 317 |
| Road as Completed Line | Unknown | | 496 |
| Road as Completed Line | Unknown | | 652 |
| Road as Completed Line | Unknown | | 707 |
| Road as Completed Line | Unknown | | 747 |
| Road as Completed Line | Unknown | | 851 |
| Road as Completed Line | Unknown | | 913 |
| Road as Completed Line | Unknown | | 1110 |
| Road as Completed Line | Unknown | | 1144 |
| Road as Completed Line | Unknown | | 1209 |
| Road as Completed Line | Unknown | | 1469 |
| Road as Completed Line | Unknown | | 1507 |
| Road as Completed Line | Unknown | | 1929 |
| Road as Completed Line | Unknown | | 2266 |
| Road as Completed Line | Unknown | | 2510 |
| Road as Completed Line | Unknown | | 4054 |
| Road as Completed Line | Unknown | | 4074 |
| Road as Completed Line | Unknown | | 4339 |
| Road as Completed Line | Unknown | | 6005 |
| Road as Completed Line | Unknown | | 12167 |
| Road as Completed Line | Unknown | | 13073 |
| Road as Completed Line | Unknown | | 20807 |
| Proposed Dozer Line | Unknown | | 9306 |
| Planned Fire Line | Unknown | | 1427 |
| Planned Fire Line | Unknown | | 1462 |
| Planned Fire Line | Unknown | | 1617 |
| Planned Fire Line | Unknown | | 2029 |
| Planned Fire Line | Unknown | | 2682 |
| Planned Fire Line | Unknown | | 3295 |
| Line Break Completed | Repair Needed | | 343 |
| Completed Hand Line | Unknown | | 185 |
| Completed Hand Line | Unknown | | 311 |
| Completed Hand Line | Unknown | | 588 |
| Completed Hand Line | Unknown | | 1156 |
| Completed Hand Line | Unknown | | 1164 |
| Completed Hand Line | Unknown | | 2096 |
| Completed Hand Line | Unknown | | 9975 |
| Completed Hand Line | Repair Needed | | 996 |
| Completed Hand Line | Repair Needed | | 602 |
| Completed Hand Line | Repair Needed | | 868 |
| Completed Hand Line | Repair Needed | | 1026 |
| Completed Hand Line | Repair Needed | A mix of Existing trail, hand line, and cold trail. | 1301 |
| Completed Hand Line | Repair Needed | | 2923 |
| Completed Hand Line | Repair Needed | | 13137 |
| Completed Dozer Line | Unknown | | 128 |
| Completed Dozer Line | Unknown | | 256 |
| Completed Dozer Line | Unknown | | 357 |
| Completed Dozer Line | Unknown | | 403 |
| Completed Dozer Line | Unknown | | 434 |
| Completed Dozer Line | Unknown | | 459 |
| Completed Dozer Line | Unknown | Only 100' of dozer line on west end. The rest is just trampled out by hand. | 520 |
| Completed Dozer Line | Unknown | | 585 |
| Completed Dozer Line | Unknown | | 619 |
| Completed Dozer Line | Unknown | | 634 |
| Completed Dozer Line | Unknown | | 686 |
| Completed Dozer Line | Unknown | | 700 |
| Completed Dozer Line | Unknown | | 707 |
| Completed Dozer Line | Unknown | | 765 |
| Completed Dozer Line | Unknown | | 9672 |
| Completed Dozer Line | Unknown | | 9954 |
| Completed Dozer Line | Unknown | | 965 |
| Completed Dozer Line | Unknown | | 941 |
| Completed Dozer Line | Unknown | | 942 |
| Completed Dozer Line | Unknown | | 955 |

| FC Line Type | Repair Status | Repair Comments | Length Feet |
|-------------------------|----------------------------------|------------------|-------------|
| Completed Dozer Line | Unknown | | 961 |
| Completed Dozer Line | Unknown | | 982 |
| Completed Dozer Line | Unknown | | 1071 |
| Completed Dozer Line | Unknown | | 1153 |
| Completed Dozer Line | Unknown | | 1175 |
| Completed Dozer Line | Unknown | | 1180 |
| Completed Dozer Line | Unknown | | 1209 |
| Completed Dozer Line | Unknown | | 1225 |
| Completed Dozer Line | Unknown | | 1234 |
| Completed Dozer Line | Unknown | | 1353 |
| Completed Dozer Line | Unknown | No repair needed | 1464 |
| Completed Dozer Line | Unknown | | 1535 |
| Completed Dozer Line | Unknown | | 1668 |
| Completed Dozer Line | Unknown | | 1750 |
| Completed Dozer Line | Unknown | | 1876 |
| Completed Dozer Line | Unknown | | 1885 |
| Completed Dozer Line | Unknown | | 1992 |
| Completed Dozer Line | Unknown | | 2009 |
| Completed Dozer Line | Unknown | | 2030 |
| Completed Dozer Line | Unknown | | 2126 |
| Completed Dozer Line | Unknown | | 2140 |
| Completed Dozer Line | Unknown | | 2502 |
| Completed Dozer Line | Unknown | | 2594 |
| Completed Dozer Line | Unknown | | 2634 |
| Completed Dozer Line | Unknown | | 2782 |
| Completed Dozer Line | Unknown | | 2907 |
| Completed Dozer Line | Unknown | | 2948 |
| Completed Dozer Line | Unknown | | 2993 |
| Completed Dozer Line | Unknown | | 3283 |
| Completed Dozer Line | Unknown | | 3443 |
| Completed Dozer Line | Unknown | | 3716 |
| Completed Dozer Line | Unknown | | 3776 |
| Completed Dozer Line | Unknown | | 3812 |
| Completed Dozer Line | Unknown | | 4349 |
| Completed Dozer Line | Unknown | | 4638 |
| Completed Dozer Line | Unknown | | 4869 |
| Completed Dozer Line | Unknown | | 6090 |
| Completed Dozer Line | Unknown | | 6100 |
| Completed Dozer Line | Unknown | | 7532 |
| Completed Dozer Line | Unknown | | 7859 |
| Completed Dozer Line | Unknown | | 8018 |
| Completed Dozer Line | Unknown | | 10943 |
| Completed Dozer Line | Repair Needed | | 78 |
| Completed Dozer Line | Repair Needed | | 100 |
| Completed Dozer Line | Repair Needed | | 471 |
| Completed Dozer Line | Repair Needed | | 895 |
| Completed Dozer Line | Repair Needed | | 1232 |
| Completed Dozer Line | Repair Needed | | 1394 |
| Completed Dozer Line | Repair Needed | | 1463 |
| Completed Dozer Line | Repair Needed | | 1511 |
| Completed Dozer Line | Repair Needed | | 2337 |
| Completed Dozer Line | Repair Needed | | 2781 |
| Completed Dozer Line | Repair Needed | | 3639 |
| Completed Dozer Line | Repair Needed | | 3699 |
| Completed Dozer Line | Repair Needed | | 5515 |
| Completed Dozer Line | Completed - Ready for Inspection | | 1046 |
| Access or Improved Road | Unknown | | 4288 |
| Access or Improved Road | Unknown | | 6187 |
| Access or Improved Road | Unknown | | 6534 |
| Access or Improved Road | Unknown | | 9672 |
| Access or Improved Road | Unknown | | 9954 |
| Access or Improved Road | Unknown | | 12409 |
| Access or Improved Road | Unknown | | 18749 |



0 0.5 1 2 Miles

1:33,000 - 10/3/2020 2055
Acres from GIS
North American 1983 Datum, LatLong Grid