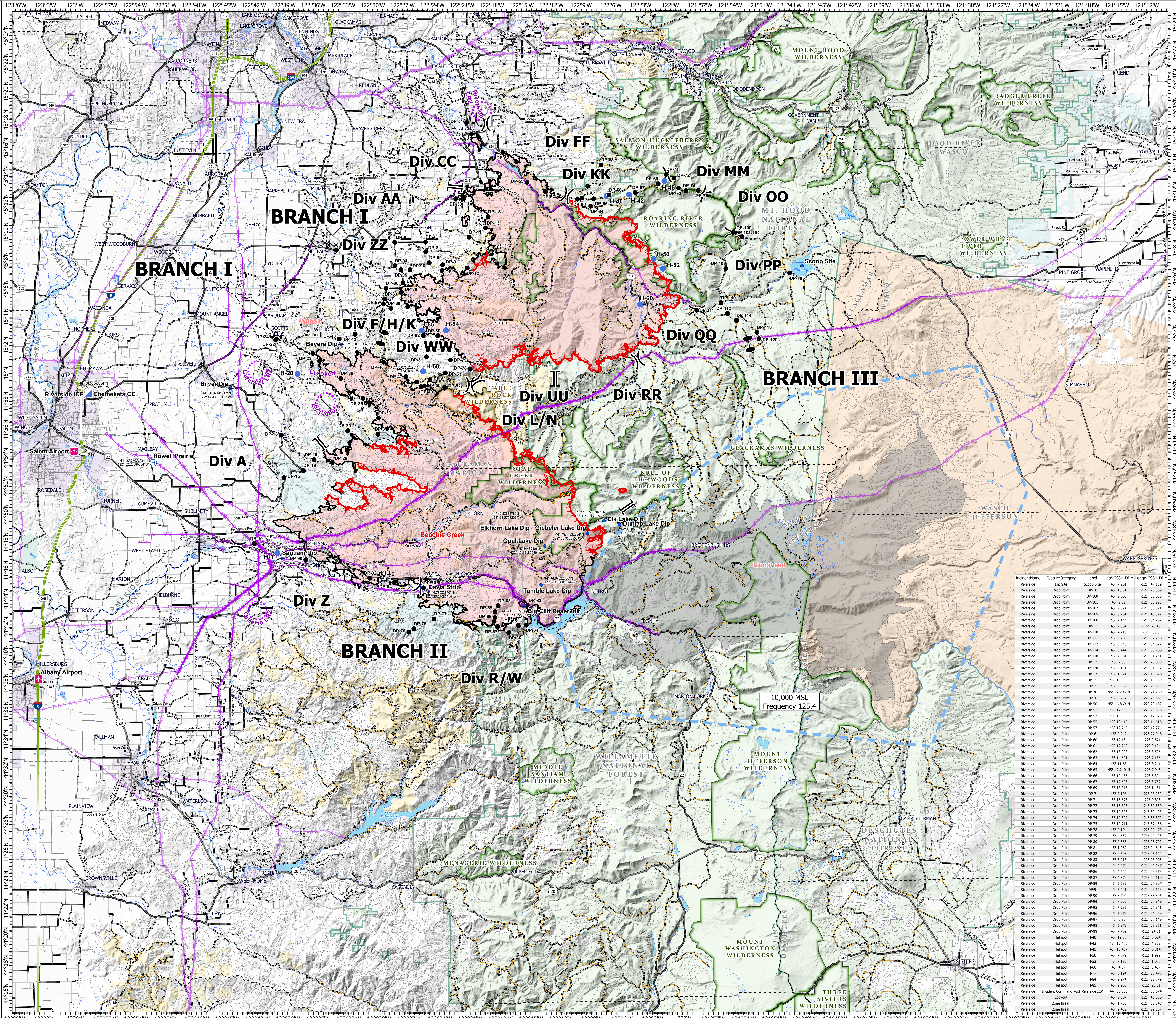
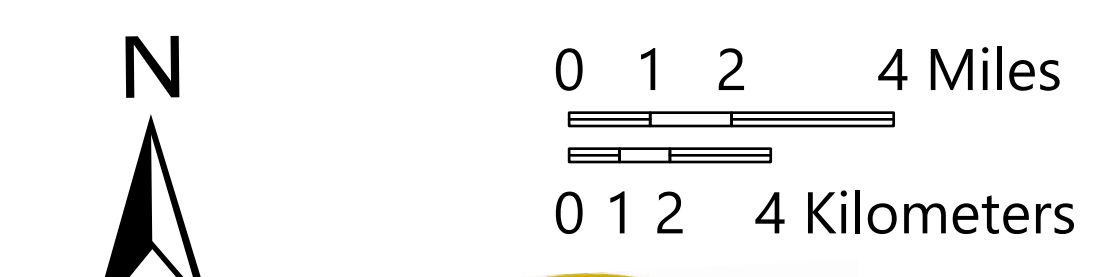


# Air Ops

Beachie Creek  
ORWIF-200299  
Riverside  
ORMHF-000859  
10/05/20

- Mine Waste Aerial Avoidance
- Airstrip or Airport
- Dip Site
- Drop Point
- Helibase
- Helispot
- Incident Command Post
- Lookout
- Zone Break
- Division Break
- Branch Break
- Uncontrolled Fire Edge
- Contained Line
- Aerial Hazard
- UAS Launch and Recovery Zone
- Wildfire Daily Fire Perimeter
- Other Fire Perimeters
- Interstate
- US Highway
- State Highway
- County Road
- Major road
- Intermediate road
- Minor road
- County Boundary
- FS Wilderness
- BLM Wilderness
- USDA-FS Forests
- City Limits
- Bureau of Land Management
- U.S. Forest Service
- U.S. Fish and Wildlife Service
- Bureau of Indian Affairs
- Other Federal
- State
- Local Government
- Private/Unknown

IncidentName	FeatureCategory	Label	LatWGS84_DTM	LongWGS84_DTM
Beachie Creek	Airstrip or Airport	Albany Airport	44° 35.32	-122° 13.65
Beachie Creek	Airstrip or Airport	Salem Airport	44° 54.49	-122° 01.12
Beachie Creek	Dip Site	Beyers Dip	45° 02.01853374 N	122° 13.38460744 W
Beachie Creek	Dip Site	Big Cliff Reservoir	44° 43.33615330 N	122° 15.20349588 W
Beachie Creek	Dip Site	Dunlap Lake Dip	44° 49.60528922 N	122° 05.33859494 W
Beachie Creek	Dip Site	Elk Lake Dip	44° 49.35332874 N	122° 07.2995522 W
Beachie Creek	Dip Site	Elkhorn Lake Dip	44° 49.33832767 N	122° 18.57785694 W
Beachie Creek	Dip Site	Giebler Lake Dip	44° 48.47922854 N	122° 08.91885334 W
Beachie Creek	Dip Site	Opal Lake Dip	44° 47.59432066 N	122° 11.19155597 W
Beachie Creek	Dip Site	Santiam Dip	44° 46.94546657 N	122° 38.38868037 W
Beachie Creek	Dip Site	Silver Dip	44° 58.92441912 N	122° 44.43051936 W
Beachie Creek	Dip Site	Tumble Lake Dip	44° 44.84832780 N	122° 13.58085334 W
Beachie Creek	Drop Point	DP-10	44° 47.90562679 N	122° 42.4006266 W
Beachie Creek	Drop Point	DP-15	44° 52.57848609 N	122° 38.16469002 W
Beachie Creek	Drop Point	DP-16	44° 53.07364058 N	122° 37.21709092 W
Beachie Creek	Drop Point	DP-18	44° 55.59430207 N	122° 39.41610798 W
Beachie Creek	Drop Point	DP-20	44° 55.89032664 N	122° 32.7086052 W
Beachie Creek	Drop Point	DP-21	45° 00.8917439 N	122° 35.79486102 W
Beachie Creek	Drop Point	DP-22	45° 02.39939652 N	122° 39.86655140 W
Beachie Creek	Drop Point	DP-23	45° 01.38844290 N	122° 36.21110538 W
Beachie Creek	Drop Point	DP-24	45° 02.62132770 N	122° 40.27265070 W
Beachie Creek	Drop Point	DP-28	44° 53.98532612 N	122° 36.14066062 W
Beachie Creek	Drop Point	DP-29	44° 53.64486158 N	122° 34.32704698 W
Beachie Creek	Drop Point	DP-31	44° 55.62822629 N	122° 29.74885998 W
Beachie Creek	Drop Point	DP-33	44° 56.77823230 N	122° 29.64909046 W
Beachie Creek	Drop Point	DP-35	44° 58.17249450 N	122° 31.23282960 W
Beachie Creek	Drop Point	DP-38	44° 59.60293793 N	122° 33.43558782 W
Beachie Creek	Drop Point	DP-40	45° 02.40089078 N	122° 33.57785268 W
Beachie Creek	Drop Point	DP-43	45° 02.72967047 N	122° 31.97840112 W
Beachie Creek	Drop Point	DP-46	45° 00.74188232 N	122° 29.13026102 W
Beachie Creek	Drop Point	DP-47	44° 59.70174340 N	122° 36.78198104 W
Beachie Creek	Drop Point	DP-48	44° 59.31458880 N	122° 25.83247398 W
Beachie Creek	Drop Point	DP-49	44° 58.97248730 N	122° 25.42140312 W
Beachie Creek	Drop Point	DP-50	44° 59.02669990 N	122° 25.07299398 W
Beachie Creek	Drop Point	DP-51	44° 59.46621290 N	122° 24.50962100 W
Beachie Creek	Drop Point	DP-52	44° 58.91751750 N	122° 23.05209186 W
Beachie Creek	Drop Point	DP-53	44° 59.93826660 N	122° 22.97194998 W
Beachie Creek	Drop Point	DP-62	44° 43.407	-122° 14.978
Beachie Creek	Drop Point	DP-63	44° 43.3078882	-122° 17.8666566
Beachie Creek	Drop Point	DP-64	44° 42.7	-122° 15.108
Beachie Creek	Drop Point	DP-65	44° 41.96705868 N	122° 15.8949116 W
Beachie Creek	Drop Point	DP-66	44° 41.47422282 N	122° 16.8639268 W
Beachie Creek	Drop Point	DP-67	44° 41.91134880 N	122° 17.97019140 W
Beachie Creek	Drop Point	DP-68	44° 42.35597192 N	122° 18.18880132 W
Beachie Creek	Drop Point	DP-69	44° 42.97061612 N	122° 18.21185838 W
Beachie Creek	Drop Point	DP-70	44° 44.70581818 N	122° 25.30554174 W
Beachie Creek	Drop Point	DP-75	44° 41.80110792 N	122° 26.28899466 W
Beachie Creek	Drop Point	DP-76	44° 41.57518888 N	122° 26.79320288 W
Beachie Creek	Drop Point	DP-77	44° 42.490	-122° 24.270
Beachie Creek	Drop Point	DP-80	44° 46.75155198 N	122° 37.01572380 W
Beachie Creek	Drop Point	DP-82	44° 45.41728222 N	122° 30.64785810 W
Beachie Creek	Drop Point	DP-84	44° 45.10533398 N	122° 28.2041394 W
Beachie Creek	Drop Point	DP-95	44° 45.35145500 N	122° 24.98833384 W
Beachie Creek	Helibase	Davis Strip	44° 44.76032670 N	122° 25.28895714 W
Beachie Creek	Helibase	Howell Prairie	44° 53.6702454 N	122° 52.20086304 W
Beachie Creek	Helispot	H-1	44° 47.23543110 N	122° 39.8454678 W
Beachie Creek	Helispot	H-20	44° 59.94879474 N	122° 37.8011146 W
Beachie Creek	Helispot	H-50	45° 00.07132250 N	122° 25.17964602 W
Beachie Creek	Incident Command Post	Chemeketa CC	44° 58.60563384 N	122° 58.67454210 W
Beachie Creek	Lookout		44° 47.70441192 N	122° 12.50267436 W



IncidentName	FeatureCategory	Label	LatWGS84_DTM	LongWGS84_DTM
Riverside	Dip Site	Scoop Site	45° 7.261	-121° 47.139
Riverside	Drop Point	DP-10	45° 18.34	-122° 26.609
Riverside	Drop Point	DP-100	45° 9.663	-121° 53.655
Riverside	Drop Point	DP-101	45° 9.69	-121° 53.993
Riverside	Drop Point	DP-102	45° 9.374	-121° 53.091
Riverside	Drop Point	DP-105	45° 6.764	-121° 48.372
Riverside	Drop Point	DP-106	45° 11.144	-121° 54.767
Riverside	Drop Point	DP-11	45° 9.564	-122° 20.48
Riverside	Drop Point	DP-110	45° 4.713	-121° 55.3
Riverside	Drop Point	DP-111	45° 4.208	-121° 57.738
Riverside	Drop Point	DP-112	45° 12.865	-121° 54.677
Riverside	Drop Point	DP-114	45° 3.444	-121° 53.766
Riverside	Drop Point	DP-118	45° 2.581	-121° 51.741
Riverside	Drop Point	DP-12	45° 7.38	-122° 20.869
Riverside	Drop Point	DP-120	45° 2.141	-121° 51.547
Riverside	Drop Point	DP-13	45° 10.21	-122° 18.826
Riverside	Drop Point	DP-15	45° 10.998	-122° 18.599
Riverside	Drop Point	DP-2	45° 8.532	-122° 24.844
Riverside	Drop Point	DP-30	45° 13.203 N	-122° 21.789
Riverside	Drop Point	DP-34	45° 9.232	-122° 24.866
Riverside	Drop Point	DP-50	45° 16.869 N	-122° 20.162
Riverside	Drop Point	DP-51	45° 17.695	-122° 20.636
Riverside	Drop Point	DP-52	45° 15.598	-122° 17.038
Riverside	Drop Point	DP-55	45° 13.415	-122° 14.616
Riverside	Drop Point	DP-57	45° 12.745	-122° 12.774
Riverside	Drop Point	DP-6	45° 9.242	-122° 27.948
Riverside	Drop Point	DP-60	45° 12.184	-122° 9.571
Riverside	Drop Point	DP-62	45° 13.098	-122° 8.520
Riverside	Drop Point	DP-63	45° 14.601	-122° 7.156
Riverside	Drop Point	DP-64	45° 11.68	-122° 9.241
Riverside	Drop Point	DP-65	45° 12.810 N	-122° 9.946
Riverside	Drop Point	DP-66	45° 12.450	-122° 9.394
Riverside	Drop Point	DP-67	45° 12.603	-122° 3.752
Riverside	Drop Point	DP-69	45° 13.216	-122° 1.451
Riverside	Drop Point	DP-7	45° 7.198	-122° 23.232
Riverside	Drop Point	DP-71	45° 13.872	-122° 16.621
Riverside	Drop Point	DP-72	45° 13.603	-121° 59.859
Riverside	Drop Point	DP-73	45° 12.895	-121° 59.403
Riverside	Drop Point	DP-74	45° 12.699	-121° 58.672
Riverside	Drop Point	DP-75	45° 12.711	-121° 57.816
Riverside	Drop Point	DP-78	45° 0.194	-122° 20.479
Riverside	Drop Point	DP-79	45° 0.857	-122° 22.445
Riverside	Drop Point	DP-80	45° 2.588	-122° 23.702
Riverside	Drop Point	DP-81	45° 1.089	-122° 28.811
Riverside	Drop Point	DP-82	45° 2.603	-122° 25.184
Riverside	Drop Point	DP-83	45° 5.216	-122° 28.993
Riverside	Drop Point	DP-84	45° 4.672	-122° 26.687
Riverside	Drop Point	DP-86	45° 4.544	-122° 28.373
Riverside	Drop Point	DP-87	45° 4.872	-122° 28.199
Riverside	Drop Point	DP-89	45° 5.689	-122° 27.307
Riverside	Drop Point	DP-9	45° 7.621	-122° 23.153
Riverside	Drop Point	DP-90	45° 8.704	-122° 23.806
Riverside	Drop Point	DP-94	45° 7.765	-122° 21.969
Riverside	Drop Point	DP-95	45° 7.285	-122° 27.341
Riverside	Drop Point	DP-96	45° 7.279	-122° 26.429
Riverside	Drop Point	DP-97	45° 6.33	-122° 27.149
Riverside	Drop Point	DP-98	45° 5.879	-122° 28.811
Riverside	Drop Point	DP-99	45° 7.769	-122° 24.511
Riverside	Helispot	H-40	45° 12.38	-122° 6.624
Riverside	Helispot	H-42	45° 12.476	-122° 4.369
Riverside	Helispot	H-45	45° 13.407	-122° 0.814
Riverside	Helispot	H-50	45° 12.997	-121° 1.999
Riverside	Helispot	H-52	45° 7.186	-122° 1.077
Riverside	Helispot	H-60	45° 4.67	-122° 3.437
Riverside	Helispot	H-77	45° 0.194	-122° 20.478
Riverside	Helispot	H-84	45° 2.974	-122° 21.879
Riverside	Helispot	H-85	45° 2.965	-122° 25.311
Riverside	Incident Command Post	Riverside ICP	44° 58.605	-122° 58.674
Riverside	Lookout		45° 9.387	-121° 43.056
Riverside	Zone Break		45° 7.753	-122° 21.969
Riverside	Zone Break		45° 2.452	-122° 29.287