

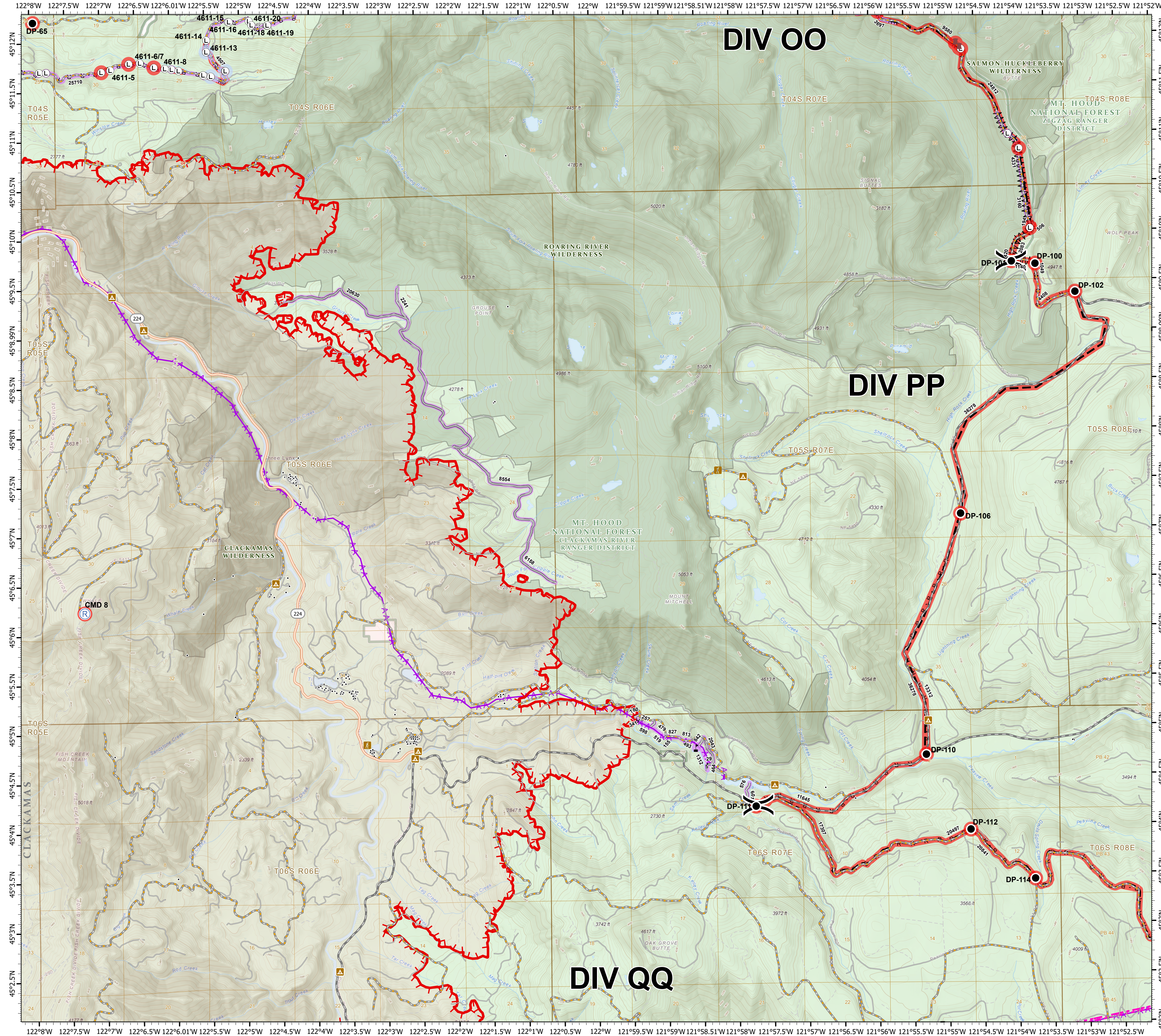
Suppression Repair

Beachie Creek
ORWIF-200299
Riverside
ORMHF-000859
10/05/20
Page: 5

- Repair Point Status**
- Repair Needed
 - No Repair Needed
 - Unknown
- Repair Line Status**
- Repair Needed
 - Unknown
- FC Point Type**
- Dozer Push
 - Drop Point
 - Landing or Log Deck
 - Repeater
 - Value at Risk
 - ✕ Division Break
- Legend**
- ✕✕ Completed Dozer Line
 - Road as Completed Line
 - Access or Improved Road
 - Line Break Completed
 - Planned Fire Line
 - Aerial Hazard
 - Uncontrolled Fire Edge
 - BPA Transmission Lines
 - Wildfire Daily Fire Perimeter
 - ▲ Structures
 - ▲ Campground
 - ▲ Trailhead
 - State Highway
 - Major road
 - Intermediate road
 - Minor road
 - Decommissioned or Closed
 - Rivers and Streams
 - Lake, Pond or Reservoir
 - County Boundary
 - Ranger District Boundaries
 - Forest Service Wilderness Area
 - U.S. Forest Service Private/Unknown

FC Point Type	Repair Status	Repair Comments	Label
Dozer Push	Repair Needed	18 inch thick slash lightly scattered here where soil is exposed. -Lin kyan	4611-6/7
Dozer Push	Repair Needed	18 inch thick slash lightly scattered slash on top of exposed soil. lin kyan 10-3-20	4611-8
Drop Point	Repair Needed		DP-100
Drop Point	Repair Needed		DP-101
Drop Point	Repair Needed		DP-102
Drop Point	Repair Needed		DP-106
Drop Point	Repair Needed		DP-110
Drop Point	Repair Needed		DP-111
Drop Point	Repair Needed		DP-112
Drop Point	Repair Needed		DP-114
Drop Point	Repair Needed		DP-65
Landing or Log Deck	Repair Needed		4611-10
Landing or Log Deck	Repair Needed		4611-14
Landing or Log Deck	Repair Needed		4611-15
Landing or Log Deck	Repair Needed		4611-16
Landing or Log Deck	Repair Needed		4611-17
Landing or Log Deck	Repair Needed		4611-18
Landing or Log Deck	Repair Needed		4611-19
Landing or Log Deck	Repair Needed		4611-20
Landing or Log Deck	Repair Needed		4611-21
Landing or Log Deck	Repair Needed		4611-22
Landing or Log Deck	Repair Needed		4611-23
Landing or Log Deck	Repair Needed		4611-24
Landing or Log Deck	Repair Needed		4611-25
Landing or Log Deck	Repair Needed		4611-26
Landing or Log Deck	Repair Needed		4611-27
Landing or Log Deck	Repair Needed		4611-28
Landing or Log Deck	Repair Needed		4611-29
Landing or Log Deck	Repair Needed		4611-30
Landing or Log Deck	Repair Needed		4611-31
Landing or Log Deck	Repair Needed		4611-32
Landing or Log Deck	Repair Needed		4611-33
Landing or Log Deck	Repair Needed		4611-34
Landing or Log Deck	Repair Needed		4611-35
Landing or Log Deck	Repair Needed		4611-36
Landing or Log Deck	Repair Needed		4611-37
Landing or Log Deck	Repair Needed		4611-38
Landing or Log Deck	Repair Needed		4611-39
Landing or Log Deck	Repair Needed		4611-40
Landing or Log Deck	Repair Needed		4611-41
Landing or Log Deck	Repair Needed		4611-42
Landing or Log Deck	Repair Needed		4611-43
Landing or Log Deck	Repair Needed		4611-44
Landing or Log Deck	Repair Needed		4611-45
Landing or Log Deck	Repair Needed		4611-46
Landing or Log Deck	Repair Needed		4611-47
Landing or Log Deck	Repair Needed		4611-48
Landing or Log Deck	Repair Needed		4611-49
Landing or Log Deck	Repair Needed		4611-50
Landing or Log Deck	Repair Needed		4611-51
Landing or Log Deck	Repair Needed		4611-52
Landing or Log Deck	Repair Needed		4611-53
Landing or Log Deck	Repair Needed		4611-54
Landing or Log Deck	Repair Needed		4611-55
Landing or Log Deck	Repair Needed		4611-56
Landing or Log Deck	Repair Needed		4611-57
Landing or Log Deck	Repair Needed		4611-58
Landing or Log Deck	Repair Needed		4611-59
Landing or Log Deck	Repair Needed		4611-60
Landing or Log Deck	Repair Needed		4611-61
Landing or Log Deck	Repair Needed		4611-62
Landing or Log Deck	Repair Needed		4611-63
Landing or Log Deck	Repair Needed		4611-64
Landing or Log Deck	Repair Needed		4611-65
Landing or Log Deck	Repair Needed		4611-66
Landing or Log Deck	Repair Needed		4611-67
Landing or Log Deck	Repair Needed		4611-68
Landing or Log Deck	Repair Needed		4611-69
Landing or Log Deck	Repair Needed		4611-70
Landing or Log Deck	Repair Needed		4611-71
Landing or Log Deck	Repair Needed		4611-72
Landing or Log Deck	Repair Needed		4611-73
Landing or Log Deck	Repair Needed		4611-74
Landing or Log Deck	Repair Needed		4611-75
Landing or Log Deck	Repair Needed		4611-76
Landing or Log Deck	Repair Needed		4611-77
Landing or Log Deck	Repair Needed		4611-78
Landing or Log Deck	Repair Needed		4611-79
Landing or Log Deck	Repair Needed		4611-80
Landing or Log Deck	Repair Needed		4611-81
Landing or Log Deck	Repair Needed		4611-82
Landing or Log Deck	Repair Needed		4611-83
Landing or Log Deck	Repair Needed		4611-84
Landing or Log Deck	Repair Needed		4611-85
Landing or Log Deck	Repair Needed		4611-86
Landing or Log Deck	Repair Needed		4611-87
Landing or Log Deck	Repair Needed		4611-88
Landing or Log Deck	Repair Needed		4611-89
Landing or Log Deck	Repair Needed		4611-90
Landing or Log Deck	Repair Needed		4611-91
Landing or Log Deck	Repair Needed		4611-92
Landing or Log Deck	Repair Needed		4611-93
Landing or Log Deck	Repair Needed		4611-94
Landing or Log Deck	Repair Needed		4611-95
Landing or Log Deck	Repair Needed		4611-96
Landing or Log Deck	Repair Needed		4611-97
Landing or Log Deck	Repair Needed		4611-98
Landing or Log Deck	Repair Needed		4611-99
Landing or Log Deck	Repair Needed		4611-100

FC Line Type	Repair Status	Repair Comments	Length Feet
Road as Completed Line	Unknown		780
Road as Completed Line	Repair Needed	Significant march. Slash piles will need to be disposed of. Flush cut pungs and stumps where needed. Chipping needed.	813
Road as Completed Line	Repair Needed	Chipper needed after fire-M. DeAngelo Sep 19, 2020. Equipment currently masticating (9/28). Crews may be needed to break up and spread highly concentrated material in the ditch.	827
Road as Completed Line	Repair Needed	Light chipping needed	1312
Road as Completed Line	Repair Needed	Sweeping of debris	3166
Road as Completed Line	Repair Needed	Sweeping of debris and light chipping need at intersection of DP 102.	4331
Road as Completed Line	Repair Needed	Chipping needed north of Shelrock Campground	4331
Road as Completed Line	Repair Needed	Chipping needed. Equipment currently masticating (9/28). Crews may be needed to break up and spread highly concentrated material in the ditch.	1140
Road as Completed Line	Repair Needed	Chipping needed north of Shelrock Campground	2083
Road as Completed Line	Repair Needed	Chipping needed. Equipment currently masticating (9/28). Crews may be needed to break up and spread highly concentrated material in the ditch.	194
Road as Completed Line	Repair Needed	Chipping needed north of Shelrock Campground	506
Road as Completed Line	Repair Needed	Chipping needed north of Shelrock Campground	29
Road as Completed Line	Repair Needed	Chipping needed north of Shelrock Campground	155
Road as Completed Line	Repair Needed	Chipping needed north of Shelrock Campground	341
Road as Completed Line	Repair Needed	Chipping needed. Equipment currently masticating (9/28). Crews may be needed to break up and spread highly concentrated material in the ditch.	479
Road as Completed Line	Repair Needed	Chipping needed north of Shelrock Campground	576
Road as Completed Line	Repair Needed	Chipping needed north of Shelrock Campground	601
Road as Completed Line	Repair Needed	Chipping needed north of Shelrock Campground	682
Road as Completed Line	Repair Needed	Chipping needed north of Shelrock Campground	2043
Road as Completed Line	Repair Needed	Chipping needed north of Shelrock Campground	2241
Road as Completed Line	Repair Needed	Chipping needed north of Shelrock Campground	6158
Road as Completed Line	Repair Needed	Chipping needed north of Shelrock Campground	8554
Road as Completed Line	Repair Needed	Chipping needed north of Shelrock Campground	20630
Completed Dozer Line	Repair Needed	Pull in berms, may not be needed until log deck is removed.	194
Completed Dozer Line	Repair Needed		506
Access or Improved Road	Unknown		29
Access or Improved Road	Unknown		155
Access or Improved Road	Unknown		341
Access or Improved Road	Unknown		479
Access or Improved Road	Unknown		576
Access or Improved Road	Unknown		601
Access or Improved Road	Unknown		682
Access or Improved Road	Unknown		2043
Access or Improved Road	Unknown		2241
Access or Improved Road	Unknown		6158
Access or Improved Road	Unknown		8554
Access or Improved Road	Unknown		20630
Other	Unknown		257
Other	Unknown		479
Other	Unknown		493
Other	Unknown		519
Other	Unknown		598



0 0.5 1 2 Miles

1:33,000 - 10/4/2020 2208
Acres from GIS
North American 1983 Datum, Lat/Long Grid