

Suppression Repair

Beachie Creek
ORWIF-200299
Beachie 4

Riverside
ORMHF-000859

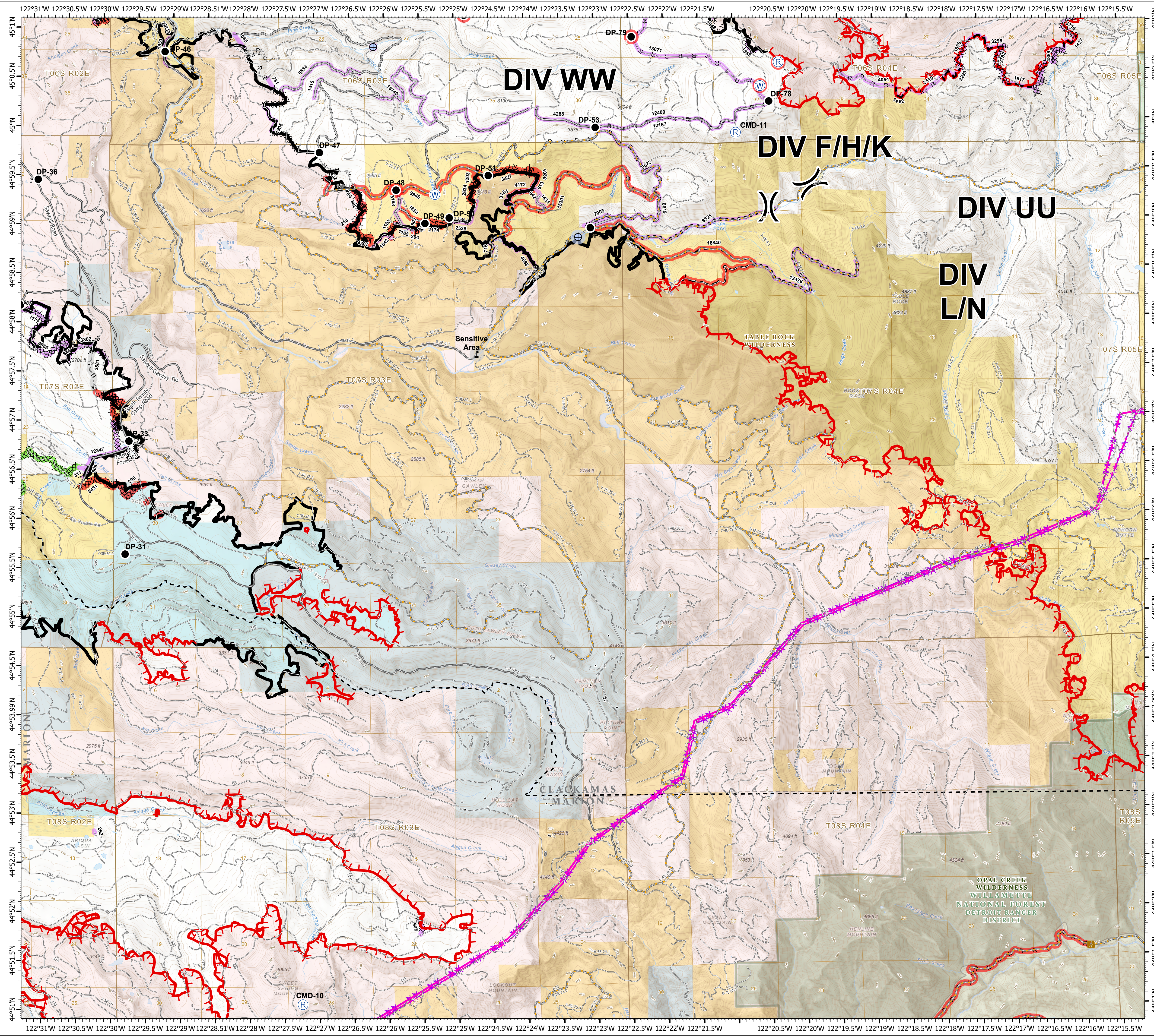
10/06/20
Page: 11

- Repair Point Status**
- Repair Needed
 - No Repair Needed
 - Other - See Comments
 - Unknown
- Repair Line Status**
- Completed - Inspected
 - Repair Needed
 - Other - See Comments
 - Unknown
- Drop Point**
- Drop Point
 - Repeater
 - Water Source
 - Water Development or Draft Site
 - Value at Risk
- Division Break**
- Contained Line
 - Completed Dozer Line
 - Completed Hand Line
 - Road as Completed Line
 - Access or Improved Road
 - Planned Fire Line
 - Planned Secondary Line
 - Aerial Hazard
 - Uncontrolled Fire Edge
 - BPA Transmission Lines
 - Wildfire Daily Fire Perimeter
 - Structures
 - Trailhead
 - County Road
- Other Features**
- Major road
 - Intermediate road
 - Minor road
 - Decommissioned or Closed
 - Rivers and Streams
 - Lake, Pond or Reservoir
 - County Boundary
 - Ranger District Boundaries
 - BLM Wilderness Area
 - Forest Service Wilderness Area
 - Bureau of Land Management
 - U.S. Forest Service
 - State
 - Private/Unknown

FC Point Type	Repair Status	Repair Comments	Label
Drop Point	Repair Needed	Richardson- 0.25 acre of disturbed compacted bare soil. Seed, straw, cover with slash. Possible decompect with excavator if available	DP-48
Drop Point	Repair Needed		DP-79
Drop Point	Repair Needed		DP-81
Drop Point	Unknown		DP-31
Drop Point	Unknown		DP-33
Drop Point	Unknown		DP-35
Drop Point	Unknown		DP-36
Drop Point	Unknown		DP-46
Drop Point	Unknown		DP-47
Drop Point	Unknown		DP-49
Drop Point	Unknown		DP-50
Drop Point	Unknown		DP-51

FC Point Type	Repair Status	Repair Comments	Label
Drop Point	Unknown		DP-52
Drop Point	Unknown		DP-53
Drop Point	Unknown		DP-78
Repeater	Unknown		CMD-10
Repeater	Unknown		CMD-11
Value at Risk	Other - See Comments		Sensitive Area
Water Development or Draft Site	Repair Needed		
Water Development or Draft Site	Unknown		
Water Source	Repair Needed		
Water Source	Unknown		

FC Line Type	Repair Status	Repair Comments	Length Feet
Road as Completed Line	Unknown		716
Road as Completed Line	Unknown		1165
Road as Completed Line	Unknown		1642
Road as Completed Line	Unknown		2535
Road as Completed Line	Unknown		6619
Road as Completed Line	Repair Needed		15301
Planned Secondary Line	Unknown		9321
Planned Secondary Line	Unknown		12476
Planned Fire Line	Repair Needed		9946
Planned Fire Line	Repair Needed		18840
Other	Unknown	Determine if this was put up for fire or if flagged for another non fire reason. IF fire related pull flagging.	262
Other	Unknown		642
Completed Hand Line	Unknown		613
Completed Hand Line	Unknown		1086
Completed Hand Line	Unknown		3184
Completed Hand Line	Unknown		4668
Completed Hand Line	Repair Needed	repair per local unit specs	
Completed Hand Line	Repair Needed	Obliterate berm, scatter slash back over line. Marshy area	204
Completed Hand Line	Repair Needed	Repair per local specs, water bars, obliterate berms, scatter slash over line	1203
Completed Hand Line	Repair Needed	Needs waterbars, some steep segments, scatter available slash, scatter slash where handline needs personnel stream, clear any debris at inlet of culvert at end of handline	4172
Completed Hand Line	Other - See Comments	consult landowner	3581
Completed Dozer Line	Unknown		
Completed Dozer Line	Unknown		311
Completed Dozer Line	Unknown		506
Completed Dozer Line	Unknown		3802
Completed Dozer Line	Unknown		12347



0 0.5 1 2 Miles

1:33,000 - 10/5/2020 2221
Acres from GIS
North American 1983 Datum, LatLong Grid