

# Suppression Repair

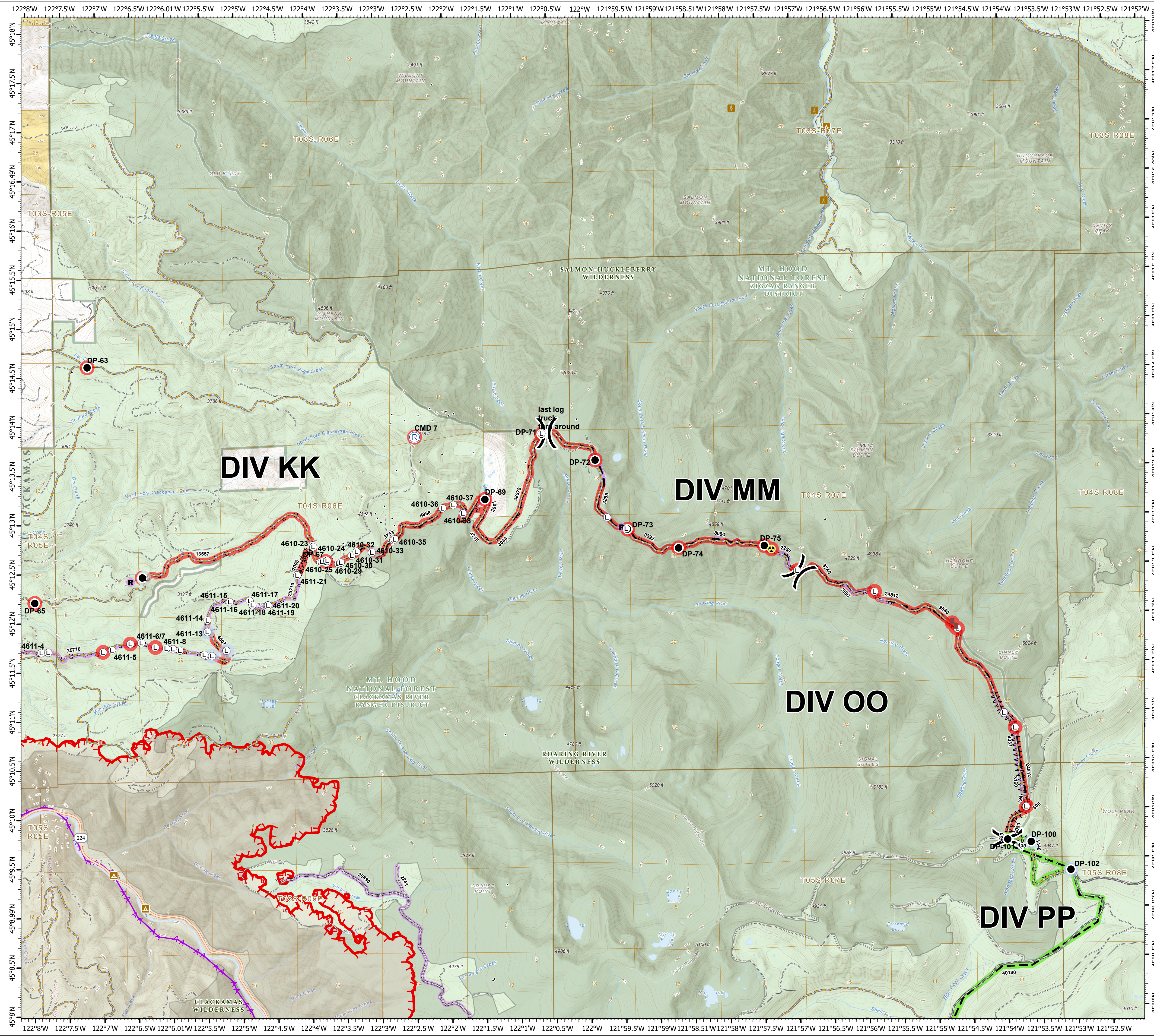
Beachie Creek  
ORWIF-200299  
Riverside  
ORMHF-000859  
10/06/20  
Page: 2

- Repair Point Status**
- Completed - Inspected
  - Repair Needed
  - No Repair Needed
  - Other - See Comments
  - Unknown
- Repair Line Status**
- Completed - Inspected
  - Repair Needed
  - Unknown
- Legend**
- Repeater
  - Resource Location
  - Division Break
  - Completed Dozer Line
  - Road as Completed Line
  - Access or Improved Road
  - Line Break Completed
  - Planned Fire Line
  - State Highway
  - Major road
  - Intermediate road
  - Minor road
  - Decommissioned or Closed
  - Rivers and Streams
  - Lake, Pond or Reservoir
  - County Boundary
  - Ranger District Boundaries
  - Forest Service Wilderness Area
  - Bureau of Land Management
  - U.S. Forest Service
  - Private/Unknown
  - Wildfire Daily Fire Perimeter
  - Structures
  - Campground
  - Trailhead
  - Drop Point
  - Dozer Push
  - Hazard
  - Landing or Log Deck

FC Point Type	Repair Status	Repair Comments	Label
Dozer Push	Repair Needed	18 inch thick slash lightly scattered here where soil is exposed. - Lin kyan	4610-25
Dozer Push	Repair Needed	18 inch thick slash scattered slash on top of exposed soil. In kyan 10/3/20	4610-27
Drop Point	Completed - Inspected		4610-29
Drop Point	No Repair Needed		4610-30
Drop Point	Repair Needed		4610-31
Drop Point	Repair Needed		4610-32
Drop Point	Repair Needed		4610-36
Drop Point	Repair Needed		4610-37
Drop Point	Repair Needed		4610-38
Drop Point	Repair Needed		4611-14
Drop Point	Repair Needed		4611-15
Drop Point	Repair Needed		4611-16
Drop Point	Repair Needed		4611-17
Drop Point	Repair Needed		4611-18
Drop Point	Repair Needed		4611-19
Drop Point	Repair Needed		4611-20
Drop Point	Repair Needed		4611-21
Drop Point	Repair Needed	waterbar and divert sweep away from failure. cutbank reworking.	4611-4
Landing or Log Deck			4611-8
Landing or Log Deck			4611-9
Landing or Log Deck			4610-23
Landing or Log Deck			4610-24

FC Line Type	Repair Status	Repair Comments	Length Feet
Road as Completed Line	Unknown		2259
Road as Completed Line	Unknown		3044
Road as Completed Line	Unknown		3097
Road as Completed Line	Unknown		25710
Road as Completed Line	Repair Needed	remove masticator debris from ditches and culvert, grade road for drainage. remove berm on shoulder scatter large slash accumulation	
Road as Completed Line	Repair Needed	Light chipping needed	420
Road as Completed Line	Repair Needed		2001
Road as Completed Line	Repair Needed	Road grading, remove berms, repair cut and fill slopes (marked separately), and chipping -Sung	3740
Road as Completed Line	Repair Needed		3753
Road as Completed Line	Repair Needed	4610 segment 4 - excavator work, too narrow for grader on outskipped road. remove slash from roadstead, road has little surfacing and very bony-R. Sanders	3885
Road as Completed Line	Repair Needed		4218
Road as Completed Line	Repair Needed	Bladed and water bars	4507
Road as Completed Line	Repair Needed	Needs grading of berm caused by dozer. Masticator edge needs follow up hand cutting (stems were cut too long).	4956
Road as Completed Line	Repair Needed	repair notes in comments	7005
Road as Completed Line	Repair Needed		9580
Road as Completed Line	Repair Needed	The road needs drainage.	9892
Road as Completed Line	Repair Needed	4610 segment 2 - Begin grading to remove berm on roadside from tracked equipment. begin slash removal from drainage features. barricade? light grading. 4610 brushing and ruts - road prism needs brushing, ditches pulled and graded to remove ruts and have proper drainage. Will require spot rock. starts at 150 spur. this segment has worst rutting	13557

FC Line Type	Repair Status	Repair Comments	Length Feet
Road as Completed Line	Completed - Inspected	Sweeping of debris and light chipping need at intersection of DP 102	1440
Road as Completed Line	Completed - Inspected	Sweeping of debris	8084
Planned Fire Line	Unknown		38578
Planned Fire Line	Repair Needed	Road grading, remove berms, repair cut and fill slopes (marked separately), and chipping -Sung	24812
Planned Fire Line	Completed - Inspected	Chipping needed throughout NF 58 and entry to NF 5830 and NF 150. Crews needed to sweep debris.	40140
Other	Repair Needed	Remove slash in ditch roadside.	3160
Line Break Completed	Unknown		4331
Line Break Completed	Repair Needed	Logs in ditch need to be removed. Chip smaller material. Berms need to be knocked down. Rocky debris behind shoulder needs additional repair	2083
Line Break Completed	Completed - Inspected	Light chipping and sweeping needed	1139
Completed Dozer Line	Repair Needed	Dozer line needs significant repair. Follow decom with slash and water bars.	
Completed Dozer Line	Repair Needed	rehab reestablish foot trail	194
Completed Dozer Line	Repair Needed	Pull in berms, may not be needed until log deck is removed	506
Access or Improved Road	Unknown		2241
Access or Improved Road	Unknown		20630



0 0.5 1 2 Miles

1:33,000 - 10/5/2020 2212  
Acres from GIS  
North American 1983 Datum, LatLong Grid