

Suppression Repair

Beachie Creek
ORWHF-200299

Riverside
ORMHF-000859

10/06/20
Page: 6

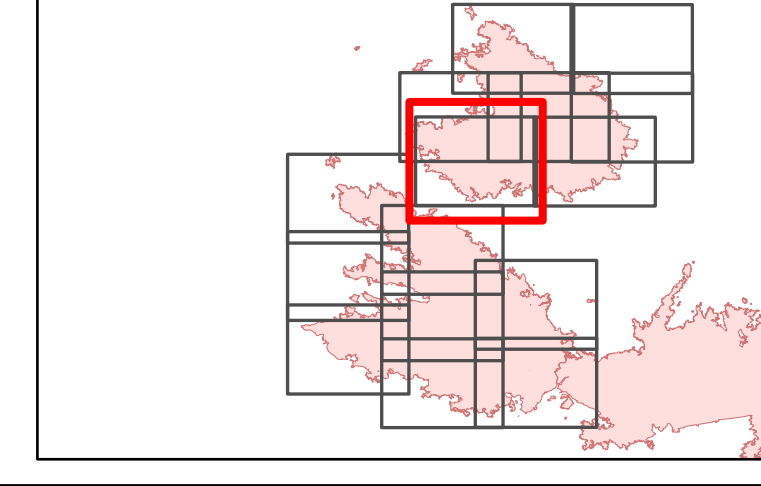
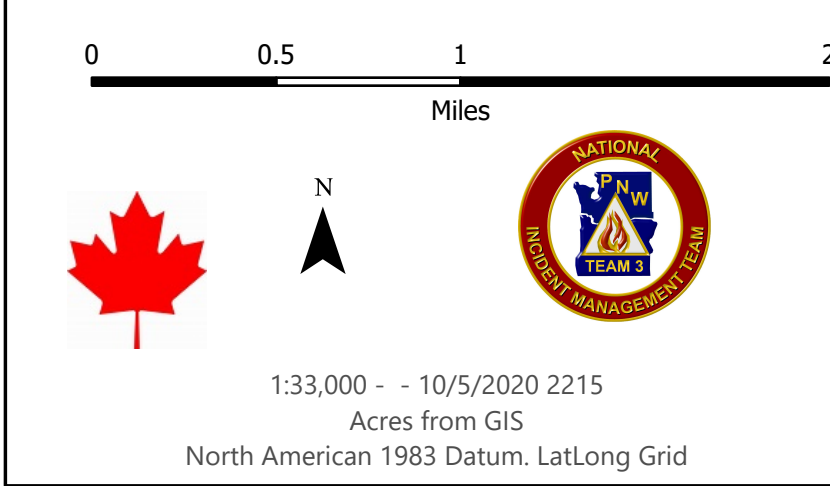
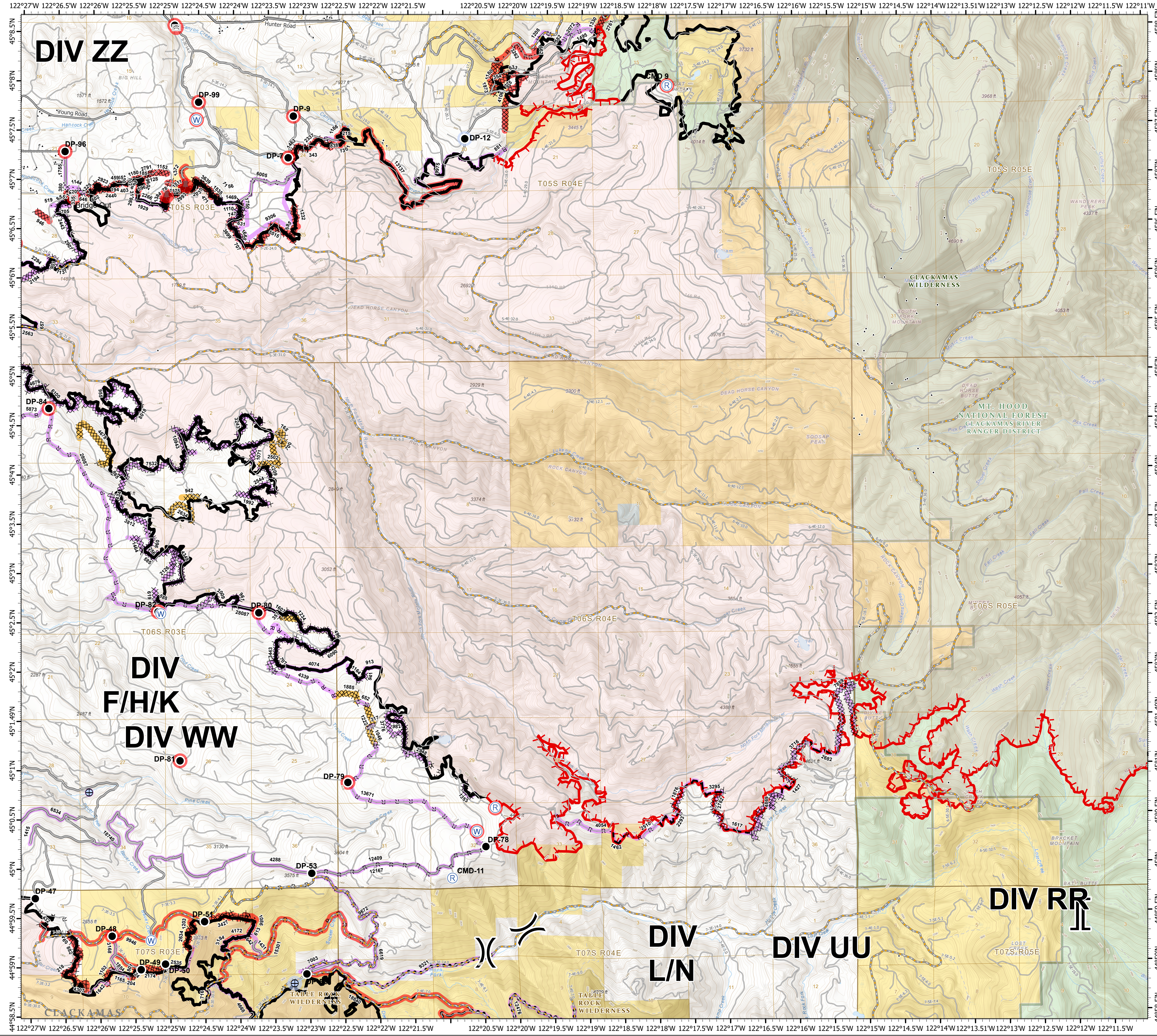
- Repair Point Status**
- Repair Needed
 - No Repair Needed
 - Unknown
- Repair Line Status**
- Completed - Road ready for Inspection
 - Repair Needed
 - Unknown
- Other Symbols**
- X Division Break
 - ┆ Branch Break
 - ▬ Contained Line
 - ▬ Completed Dozer Line
 - ▬ Completed Hand Line
 - ▬ Road as Completed Line
 - ▬ Access or Improved Road
 - ▬ Line Break Completed
 - ▬ Planned Fire Line
 - ▬ Bridge
 - Drop Point
 - Dozer Push
 - Repeater
 - Water Source
 - Water Development or Draft Site
 - Value at Risk
- Line Types**
- Intermediate road
 - Minor road
 - Decommissioned or Closed
 - Rivers and Streams
 - Lake, Pond or Reservoir
 - County Boundary
 - Ranger District Boundaries
 - BLM Wilderness Area
 - Forest Service Wilderness Area
 - Bureau of Land Management
 - U.S. Forest Service
 - Private/Unknown

FC Point Type	Repair Status	Repair Comments	Label
Bridge	Repair Needed		Bridge Out
Drop Point	Repair Needed		DP-12
Drop Point	Repair Needed		DP-2
Drop Point	Repair Needed	Richardson: 0.25 acre of disturbed compacted bare soil. Seed, straw, cover with slash. Possible decompack with excavator if available	DP-48
Drop Point	Repair Needed		DP-7
Drop Point	Repair Needed		DP-79
Drop Point	Repair Needed		DP-80
Drop Point	Repair Needed		DP-81
Drop Point	Repair Needed		DP-82
Drop Point	Repair Needed		DP-84
Drop Point	Repair Needed		DP-9
Drop Point	Repair Needed		DP-96
Drop Point	Repair Needed		DP-97
Drop Point	Repair Needed		DP-99

FC Point Type	Repair Status	Repair Comments	Label
Drop Point	Unknown		DP-47
Drop Point	Unknown		DP-49
Drop Point	Unknown		DP-50
Drop Point	Unknown		DP-51
Drop Point	Unknown		DP-52
Drop Point	Unknown		DP-53
Drop Point	Unknown		DP-78
Repeater	Repair Needed		CMD-9
Repeater	Unknown		CMD-11
Repeater	Unknown		CMD-10
Value at Risk	Repair Needed		
Water Development or Draft Site	No Repair Needed		
Water Development or Draft Site	Unknown		
Water Source	Repair Needed		
Water Source	Repair Needed		
Water Source	Unknown		
Water Source	Unknown		

FC Line Type	Repair Status	Repair Comments	Length Feet
Road as Completed Line	Unknown		194
Road as Completed Line	Unknown		245
Road as Completed Line	Unknown		298
Road as Completed Line	Unknown		317
Road as Completed Line	Unknown		496
Road as Completed Line	Unknown		652
Road as Completed Line	Unknown		707
Road as Completed Line	Unknown		747
Road as Completed Line	Unknown		851
Road as Completed Line	Unknown		913
Road as Completed Line	Unknown		1110
Road as Completed Line	Unknown		1144
Road as Completed Line	Unknown		1492
Road as Completed Line	Unknown		1607
Road as Completed Line	Unknown		1929
Road as Completed Line	Unknown		2256
Road as Completed Line	Unknown		2510
Road as Completed Line	Unknown		4624
Road as Completed Line	Unknown		4074
Road as Completed Line	Unknown		4339
Road as Completed Line	Unknown		6005
Road as Completed Line	Unknown		12167
Road as Completed Line	Unknown		13673
Road as Completed Line	Unknown		24897
Road as Completed Line	Repair Needed	waterbar	1372
Proposed Dozer Line	Unknown		9306
Planned Fire Line	Unknown		1427
Planned Fire Line	Unknown		1462
Planned Fire Line	Unknown		1617
Planned Fire Line	Unknown		2923
Planned Fire Line	Unknown		2982
Planned Fire Line	Unknown		3295
Line Break Completed	Repair Needed		343
Completed Hand Line	Unknown		185
Completed Hand Line	Unknown		311
Completed Hand Line	Unknown		588
Completed Hand Line	Unknown		1156
Completed Hand Line	Unknown		1164
Completed Hand Line	Unknown		2096
Completed Hand Line	Unknown		9975
Completed Hand Line	Repair Needed		796
Completed Hand Line	Repair Needed		602
Completed Hand Line	Repair Needed		868
Completed Hand Line	Repair Needed		1026
Completed Hand Line	Repair Needed	A mix of Existing trail, hand line, and cold trail.	1301
Completed Hand Line	Repair Needed		2923
Completed Hand Line	Repair Needed		13137
Completed Dozer Line	Unknown		128
Completed Dozer Line	Unknown		256
Completed Dozer Line	Unknown		357
Completed Dozer Line	Unknown		403
Completed Dozer Line	Unknown		434
Completed Dozer Line	Unknown		459
Completed Dozer Line	Unknown	Only 100' of dozer line on west end. The rest is just trampled out by hand.	520
Completed Dozer Line	Unknown		585
Completed Dozer Line	Unknown		619
Completed Dozer Line	Unknown		631
Completed Dozer Line	Unknown		646
Completed Dozer Line	Unknown		707
Completed Dozer Line	Unknown		865
Completed Dozer Line	Unknown		941
Completed Dozer Line	Unknown		955
Completed Dozer Line	Unknown		960
Completed Dozer Line	Unknown		961
Completed Dozer Line	Unknown		982

FC Line Type	Repair Status	Repair Comments	Length Feet
Completed Dozer Line	Unknown		1071
Completed Dozer Line	Unknown		1153
Completed Dozer Line	Unknown		1180
Completed Dozer Line	Unknown		1209
Completed Dozer Line	Unknown		1225
Completed Dozer Line	Unknown		1234
Completed Dozer Line	Unknown	No repair needed	1353
Completed Dozer Line	Unknown		1464
Completed Dozer Line	Unknown		1535
Completed Dozer Line	Unknown		1668
Completed Dozer Line	Unknown		1750
Completed Dozer Line	Unknown		1876
Completed Dozer Line	Unknown		1902
Completed Dozer Line	Unknown		2069
Completed Dozer Line	Unknown		2030
Completed Dozer Line	Unknown		2126
Completed Dozer Line	Unknown		2440
Completed Dozer Line	Unknown		2594
Completed Dozer Line	Unknown		2782
Completed Dozer Line	Unknown		2907
Completed Dozer Line	Unknown		2948
Completed Dozer Line	Unknown		2993
Completed Dozer Line	Unknown		3243
Completed Dozer Line	Unknown		3645
Completed Dozer Line	Unknown		3716
Completed Dozer Line	Unknown		3776
Completed Dozer Line	Unknown		3812
Completed Dozer Line	Unknown		4349
Completed Dozer Line	Unknown		4869
Completed Dozer Line	Unknown		6080
Completed Dozer Line	Unknown		6100
Completed Dozer Line	Unknown		7532
Completed Dozer Line	Unknown		7859
Completed Dozer Line	Unknown		8018
Completed Dozer Line	Unknown		10943
Completed Dozer Line	Repair Needed		78
Completed Dozer Line	Repair Needed		100
Completed Dozer Line	Repair Needed		471
Completed Dozer Line	Repair Needed		895
Completed Dozer Line	Repair Needed	pull berms, waterbars, scatter slash, block div access	1175
Completed Dozer Line	Repair Needed		1232
Completed Dozer Line	Repair Needed		1384
Completed Dozer Line	Repair Needed		1463
Completed Dozer Line	Repair Needed		1511
Completed Dozer Line	Repair Needed		2337
Completed Dozer Line	Repair Needed		2791
Completed Dozer Line	Repair Needed		3639
Completed Dozer Line	Repair Needed		3699
Completed Dozer Line	Repair Needed		5515
Completed Dozer Line	Completed - Ready for Inspection		700
Completed Dozer Line	Completed - Ready for Inspection		765
Completed Dozer Line	Completed - Ready for Inspection		942
Completed Dozer Line	Completed - Ready for Inspection		1046
Completed Dozer Line	Completed - Ready for Inspection		1222
Completed Dozer Line	Completed - Ready for Inspection		1885
Completed Dozer Line	Completed - Ready for Inspection		2502
Completed Dozer Line	Completed - Ready for Inspection		2634
Completed Dozer Line	Completed - Ready for Inspection	Dozer line 4677 on repair map. Completed 10/4/2020	4678
Access or Improved Road	Unknown		4388
Access or Improved Road	Unknown		6334
Access or Improved Road	Unknown		9672
Access or Improved Road	Unknown		12409
Access or Improved Road	Unknown		18740



1:33,000 - 10/5/2020 2215
Acres from GIS
North American 1983 Datum, LatLong Grid