

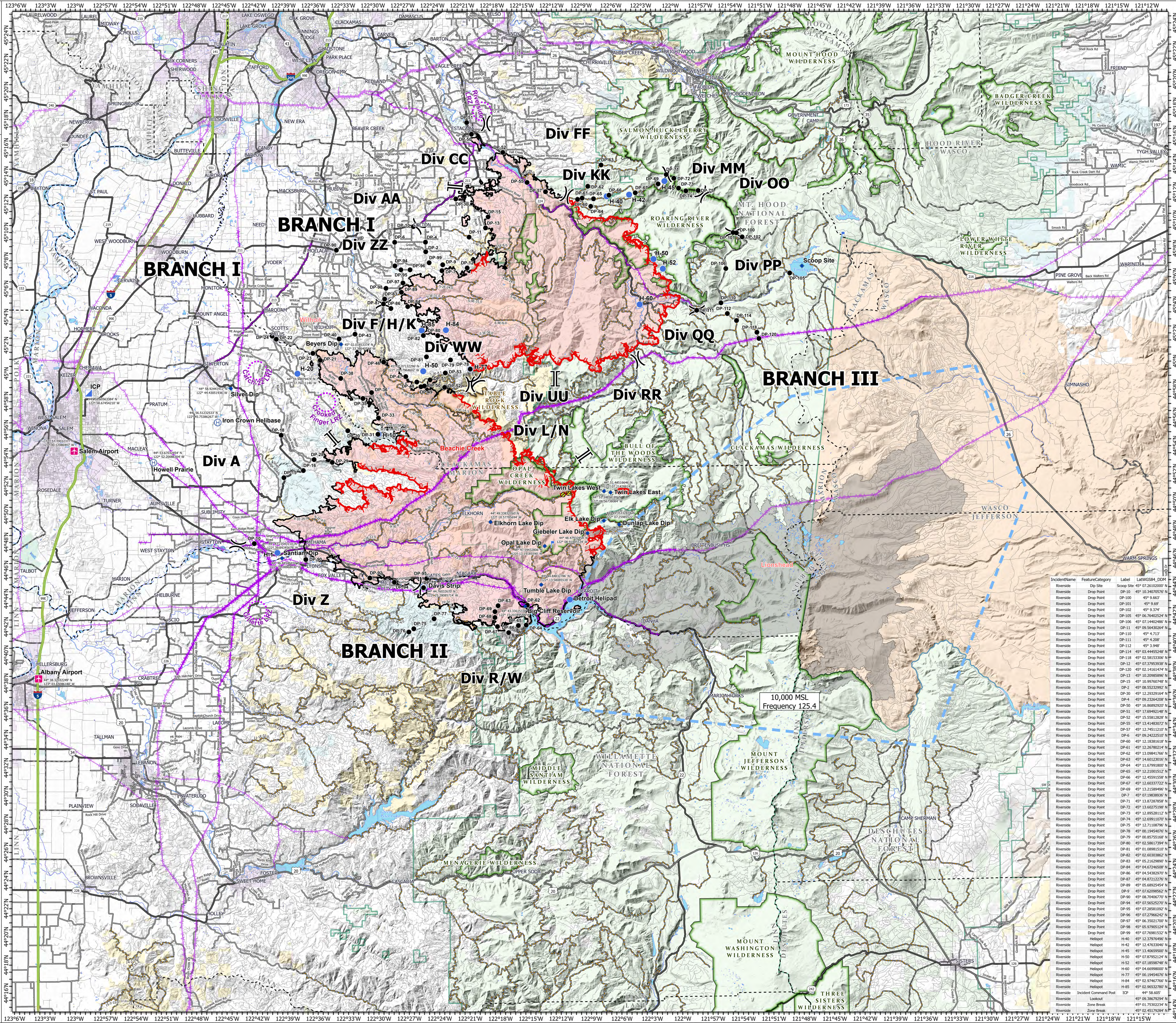
Air Ops

Beachie Creek
ORWIF-200299
Riverside
ORMHF-000859
10/07/20

- Mine Waste Aerial Avoidance
- Airstrip or Airport
- Dip Site
- Drop Point
- Helibase
- Helispot
- Incident Command Post
- Lookout
- Division Break
- Branch Break
- Uncontrolled Fire Edge
- Contained Line
- Aerial Hazard
- UAS Launch and Recovery Zone
- Wildfire Daily Fire Perimeter
- Other Fire Perimeters
- Interstate
- US Highway
- State Highway
- County Road
- Major road
- Intermediate road
- Minor road
- County Boundary
- FS Wilderness
- BLM Wilderness
- USDA-FS Forests
- City Limits
- Bureau of Land Management
- U.S. Forest Service
- U.S. Fish and Wildlife Service
- Bureau of Indian Affairs
- Other Federal
- Local
- Local Government
- Private/Unknown

IncidentName	FeatureCategory	Label	LatWGS84_DDM	LongWGS84_DDM
Beachie Creek	Airstrip or Airport	Albany Airport	44° 38.3203249' N	122° 03.6506180' W
Beachie Creek	Airstrip or Airport	Salem Airport	44° 54.4903277' N	122° 00.1206447' W
Beachie Creek	Dip Site	Beyers Dip	45° 02.0160337' N	122° 33.2894744' W
Beachie Creek	Dip Site	Big Cliff Reservoir	44° 43.0000000' N	122° 15.2030688' W
Beachie Creek	Dip Site	Dunlap Lake Dip	44° 49.0662892' N	122° 05.7336594' W
Beachie Creek	Dip Site	Elk Lake Dip	44° 49.3532874' N	122° 07.2585522' W
Beachie Creek	Dip Site	Elkhorn Lake Dip	44° 49.3382760' N	122° 18.5776694' W
Beachie Creek	Dip Site	Gable Lake Dip	44° 48.4702285' N	122° 08.9180551' W
Beachie Creek	Dip Site	Opal Lake Dip	44° 47.5943280' N	122° 13.1915590' W
Beachie Creek	Dip Site	Santiam Dip	44° 46.8456650' N	122° 39.3868030' W
Beachie Creek	Dip Site	Silver Dip	44° 58.9241912' N	122° 44.4305139' W
Beachie Creek	Dip Site	Tumble Lake Dip	44° 48.9463278' N	122° 13.5806554' W
Beachie Creek	Dip Site	Twin Lakes East	44° 51.3458189' N	122° 06.5673804' W
Beachie Creek	Dip Site	Twin Lakes West	44° 51.4451646' N	122° 07.2142814' W
Beachie Creek	Drop Point	DP-10	44° 47.9026272' N	122° 42.1420236' W
Beachie Creek	Drop Point	DP-15	44° 52.5718664' N	122° 39.1666202' W
Beachie Creek	Drop Point	DP-16	44° 53.0734949' N	122° 32.2172002' W
Beachie Creek	Drop Point	DP-18	44° 55.5943020' N	122° 39.4161079' W
Beachie Creek	Drop Point	DP-20	44° 55.8903264' N	122° 32.7606052' W
Beachie Creek	Drop Point	DP-21	45° 00.8937243' N	122° 35.4796010' W
Beachie Creek	Drop Point	DP-22	45° 02.2909922' N	122° 39.8605140' W
Beachie Creek	Drop Point	DP-23	45° 01.3884224' N	122° 36.2111038' W
Beachie Creek	Drop Point	DP-24	45° 02.6213277' N	122° 40.2726507' W
Beachie Creek	Drop Point	DP-28	44° 53.8452612' N	122° 36.1409602' W
Beachie Creek	Drop Point	DP-29	44° 55.8468197' N	122° 34.2274989' W
Beachie Creek	Drop Point	DP-31	44° 55.6283692' N	122° 29.7485999' W
Beachie Creek	Drop Point	DP-33	44° 56.7787236' N	122° 29.6860946' W
Beachie Creek	Drop Point	DP-35	44° 56.1724516' N	122° 31.2233296' W
Beachie Creek	Drop Point	DP-36	44° 56.5840259' N	122° 31.3996709' W
Beachie Creek	Drop Point	DP-38	44° 59.6023959' N	122° 33.4358752' W
Beachie Creek	Drop Point	DP-40	45° 02.4000978' N	122° 33.5778268' W
Beachie Creek	Drop Point	DP-43	45° 02.7287040' N	122° 31.9784012' W
Beachie Creek	Drop Point	DP-46	45° 02.7410822' N	122° 29.1300010' W
Beachie Creek	Drop Point	DP-47	44° 59.7927634' N	122° 34.0279104' W
Beachie Creek	Drop Point	DP-48	44° 59.3145888' N	122° 25.8324739' W
Beachie Creek	Drop Point	DP-49	44° 58.9725487' N	122° 25.4214032' W
Beachie Creek	Drop Point	DP-50	44° 59.0266699' N	122° 25.0729398' W
Beachie Creek	Drop Point	DP-51	44° 59.4562198' N	122° 24.5059282' W
Beachie Creek	Drop Point	DP-52	44° 58.9175150' N	122° 23.0209180' W
Beachie Creek	Drop Point	DP-53	44° 59.5382696' N	122° 22.9719499' W
Beachie Creek	Drop Point	DP-62	44° 42.4073274' N	122° 14.9788530' W
Beachie Creek	Drop Point	DP-63	44° 43.3038862' N	122° 17.6806560' W
Beachie Creek	Drop Point	DP-64	44° 42.0003274' N	122° 15.1086501' W
Beachie Creek	Drop Point	DP-65	44° 41.9670588' N	122° 15.8949116' W
Beachie Creek	Drop Point	DP-66	44° 41.4742282' N	122° 16.6532627' W
Beachie Creek	Drop Point	DP-67	44° 41.9117466' N	122° 17.9701940' W
Beachie Creek	Drop Point	DP-68	44° 42.5597312' N	122° 18.2158312' W
Beachie Creek	Drop Point	DP-69	44° 42.9705162' N	122° 18.2118588' W
Beachie Creek	Drop Point	DP-70	44° 44.7058168' N	122° 25.3054174' W
Beachie Creek	Drop Point	DP-75	44° 41.8010792' N	122° 26.2889640' W
Beachie Creek	Drop Point	DP-76	44° 43.318166' N	122° 26.7030268' W
Beachie Creek	Drop Point	DP-77	44° 42.4968257' N	122° 24.2763585' W
Beachie Creek	Drop Point	DP-80	44° 46.7515198' N	122° 37.0157286' W
Beachie Creek	Drop Point	DP-92	44° 45.4172622' N	122° 30.6478581' W
Beachie Creek	Drop Point	DP-94	44° 45.1053378' N	122° 38.2019134' W
Beachie Creek	Drop Point	DP-95	44° 45.3514506' N	122° 24.9883234' W
Beachie Creek	Helibase	Davis Strip	44° 44.7603270' N	122° 25.2808574' W
Beachie Creek	Helibase	Howell Prairie	44° 53.6703245' N	122° 52.2006304' W
Beachie Creek	Helibase	Iron Crown Helibase	44° 56.5123533' N	122° 45.7380267' W
Beachie Creek	Helispot	H-1	44° 42.8245110' N	122° 39.8456267' W
Beachie Creek	Helispot	H-10	44° 55.6322587' N	122° 29.6922142' W
Beachie Creek	Helispot	H-20	44° 59.9487947' N	122° 37.7601146' W
Beachie Creek	Helispot	H-50	45° 00.0713226' N	122° 25.1796462' W
Beachie Creek	Incident Command Post	ICP	44° 58.6062394' N	122° 58.4749212' W
Beachie Creek	Lookout	Lookout	44° 47.9441192' N	122° 12.5026743' W
Lionhead	Helispot	Detroit Helispot	44° 43.775' N	122° 10.741' W

0 1 2 4 Miles
0 1 2 4 Kilometers



IncidentName	FeatureCategory	Label	LatWGS84_DDM
Riverside	Dip Site	Scoop Site	45° 02.2610200' N
Riverside	Drop Point	DP-10	45° 02.3407078' N
Riverside	Drop Point	DP-102	45° 06.16261' N
Riverside	Drop Point	DP-101	45° 9.669' N
Riverside	Drop Point	DP-102	45° 9.374' N
Riverside	Drop Point	DP-105	45° 06.7602524' N
Riverside	Drop Point	DP-106	45° 02.1462024' N
Riverside	Drop Point	DP-111	45° 06.5620244' N
Riverside	Drop Point	DP-110	45° 4.713' N
Riverside	Drop Point	DP-111	45° 4.208' N
Riverside	Drop Point	DP-112	45° 3.948' N
Riverside	Drop Point	DP-114	45° 02.8452542' N
Riverside	Drop Point	DP-118	45° 02.5815300' N
Riverside	Drop Point	DP-12	45° 07.3759338' N
Riverside	Drop Point	DP-120	45° 02.1416474' N
Riverside	Drop Point	DP-13	45° 02.2089268' N
Riverside	Drop Point	DP-15	45° 10.9976048' N
Riverside	Drop Point	DP-2	45° 08.5523292' N
Riverside	Drop Point	DP-30	45° 12.2929164' N
Riverside	Drop Point	DP-4	45° 02.2342638' N
Riverside	Drop Point	DP-50	45° 16.8692007' N
Riverside	Drop Point	DP-51	45° 17.6992148' N
Riverside	Drop Point	DP-52	45° 15.5581288' N
Riverside	Drop Point	DP-55	45° 12.1416027' N
Riverside	Drop Point	DP-57	45° 12.7451127' N
Riverside	Drop Point	DP-6	45° 09.2422510' N
Riverside	Drop Point	DP-60	45° 12.1831618' N
Riverside	Drop Point	DP-61	45° 12.2878024' N
Riverside	Drop Point	DP-62	45° 12.0984112' N
Riverside	Drop Point	DP-63	45° 14.6012306' N
Riverside	Drop Point	DP-64	45° 11.6791800' N
Riverside	Drop Point	DP-65	45° 12.2101512' N
Riverside	Drop Point	DP-66	45° 02.5059158' N
Riverside	Drop Point	DP-67	45° 12.6033772' N
Riverside	Drop Point	DP-69	45° 13.2189490' N
Riverside	Drop Point	DP-7	45° 07.1983893' N
Riverside	Drop Point	DP-71	45° 13.8728758' N
Riverside	Drop Point	DP-72	45° 02.6027518' N
Riverside	Drop Point	DP-73	45° 12.8952812' N
Riverside	Drop Point	DP-74	45° 12.6991107' N
Riverside	Drop Point	DP-75	45° 12.7110879' N
Riverside	Drop Point	DP-78	45° 02.1945612' N
Riverside	Drop Point	DP-79	45° 00.8575168' N
Riverside	Drop Point	DP-80	45° 02.5861739' N
Riverside	Drop Point	DP-81	45° 01.0889110' N
Riverside	Drop Point	DP-82	45° 02.0380262' N
Riverside	Drop Point	DP-83	45° 05.2162980' N
Riverside	Drop Point	DP-84	45° 04.6724650' N
Riverside	Drop Point	DP-86	45° 04.5438207' N
Riverside	Drop Point	DP-87	45° 04.8721227' N
Riverside	Drop Point	DP-89	45° 06.6802464' N
Riverside	Drop Point	DP-9	45° 07.6209562' N
Riverside	Drop Point	DP-90	45° 08.7040670' N
Riverside	Drop Point	DP-94	45° 07.5652570' N
Riverside	Drop Point	DP-95	45° 02.9631902' N
Riverside	Drop Point	DP-96	45° 07.2796412' N
Riverside	Drop Point	DP-97	45° 06.3502170' N
Riverside	Drop Point	DP-98	45° 05.9790512' N
Riverside	Drop Point	DP-99	45° 07.9015212' N
Riverside	Helispot	H-40	45° 12.3797496' N
Riverside	Helispot	H-42	45° 12.4763304' N
Riverside	Helispot	H-45	45° 13.4065900' N
Riverside	Helispot	H-50	45° 07.8795214' N
Riverside	Helispot	H-52	45° 01.1805894' N
Riverside	Helispot	H-60	45° 04.6698000' N
Riverside	Helispot	H-77	45° 00.1945407' N
Riverside	Helispot	H-84	45° 02.9740776' N
Riverside	Helispot	H-88	45° 02.1963270' N
Riverside	Incident Command Post	ICP	44° 58.605' N
Riverside	Zone Break	Zone Break	45° 01.7570234' N