

Suppression Repair

Beachie Creek
ORWIF-200299
Beachie 4

Riverside
ORMHF-000859

10/07/20
Page: 11

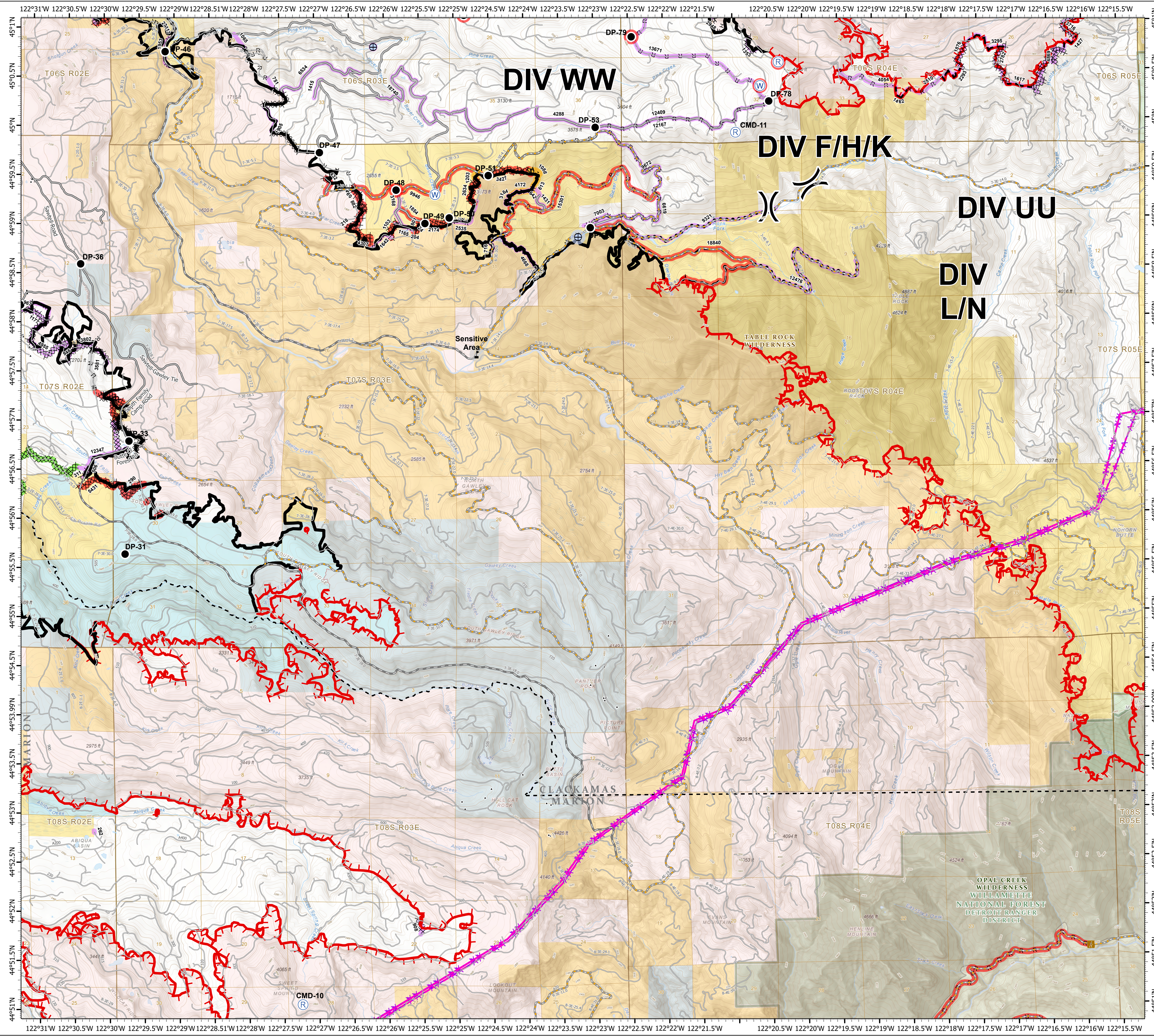
- Repair Point Status**
- Repair Needed
 - No Repair Needed
 - Other - See Comments
 - Unknown
- Repair Line Status**
- Completed - Inspected
 - Completed - Ready for Inspection
 - Repair Needed
 - Other - See Comments
 - Unknown
- Drop Point
 - Gate
 - Repeater
 - Water Source
 - Water Development or Draft Site
- Value at Risk
 - Contained Break
 - Contained Line
 - Completed Dozer Line
 - Completed Hand Line
 - Road as Completed Line
 - Access or Improved Road
 - Planned Fire Line
 - Planned Secondary Line
 - Aerial Hazard
 - Uncontrolled Fire Edge
 - BPA Transmission Lines
 - Wildfire Daily Fire Perimeter
- County Road
 - Major road
 - Intermediate road
 - Minor road
 - Decommissioned or Closed
 - Rivers and Streams
 - Lake, Pond or Reservoir
 - County Boundary
 - Ranger District Boundaries
 - BLM Wilderness Area
 - Forest Service Wilderness Area
 - Bureau of Land Management
 - U.S. Forest Service
 - State
 - Private/Unknown

FC Point Type	Repair Status	Repair Comments	Label
Drop Point	Repair Needed	Richardson- 0.25 acre of disturbed compacted bare soil. Seed, straw, cover with slash. Possible decompact with excavator if available	DP-48
Drop Point	Repair Needed		DP-79
Drop Point	Repair Needed		DP-81
Drop Point	Unknown		DP-31
Drop Point	Unknown		DP-33
Drop Point	Unknown		DP-35
Drop Point	Unknown		DP-36
Drop Point	Unknown		DP-46
Drop Point	Unknown		DP-47
Drop Point	Unknown		DP-49
Drop Point	Unknown		DP-50
Drop Point	Unknown		DP-51

FC Point Type	Repair Status	Repair Comments	Label
Drop Point	Unknown		DP-52
Drop Point	Unknown		DP-53
Drop Point	Unknown		DP-78
Repeater	Unknown		CMD-10
Repeater	Unknown		CMD-11
Value at Risk	Other - See Comments		Sensitive Area
Water Development or Draft Site	No Repair Needed		
Water Development or Draft Site	Unknown		
Water Source	Repair Needed		
Water Source	Unknown		

FC Line Type	Repair Status	Repair Comments	Length Feet
Road as Completed Line	Unknown		716
Road as Completed Line	Unknown		1165
Road as Completed Line	Unknown		1642
Road as Completed Line	Unknown		2535
Road as Completed Line	Unknown		6619
Road as Completed Line	Repair Needed		15301
Planned Secondary Line	Unknown		9321
Planned Secondary Line	Unknown		12476
Planned Fire Line	Repair Needed		9946
Planned Fire Line	Repair Needed		18840
Other	Unknown	Determine if this was put up for fire or if flagged for another non fire reason. IF fire related pull flagging.	762
Other	Unknown		642
Completed Hand Line	Unknown		3184
Completed Hand Line	Unknown		4668
Completed Hand Line	Repair Needed	repair per local unit specs	204
Completed Hand Line	Repair Needed	obliterate berm, scatter slash back over line. Marshy area	3581
Completed Hand Line	Other - See Comments	consult landowner	613
Completed Hand Line	Completed - Ready for Inspection		3086
Completed Hand Line	Completed - Ready for Inspection	Repair per local specs, water bars, obliterate berms, scatter slash over line	1303
Completed Hand Line	Completed - Ready for Inspection	Needs waterbars, some steep segments, scatter available slash, scatter slash where handline meets perennial stream, clear any debris at inlet of culvert at end of handline	4172
Completed Dozer Line	Unknown		
Completed Dozer Line	Unknown		311
Completed Dozer Line	Unknown		506
Completed Dozer Line	Unknown		3802
Completed Dozer Line	Unknown		12347

FC Line Type	Repair Status	Repair Comments	Length Feet
Completed Dozer Line	Repair Needed	repair per local unit specs	
Completed Dozer Line	Repair Needed	repair per local unit specs	
Completed Dozer Line	Repair Needed	repair per local BLM specs, obliterate berms and push piles, water bar as needed, needs medium excavator with grapple claw, access through private land to south	
Completed Dozer Line	Repair Needed	consult landowner, likely needs medium excavator	
Completed Dozer Line	Repair Needed	obliterate berm, need medium excavator with grapple bucket	
Completed Dozer Line	Repair Needed	Drag slash back over line	24
Completed Dozer Line	Repair Needed	consult with land owner	218
Completed Dozer Line	Repair Needed	Consult with landowner	290
Completed Dozer Line	Repair Needed	Repair to specs. Might not need any work	432
Completed Dozer Line	Repair Needed	A few wet areas	460
Completed Dozer Line	Repair Needed	Repair per local specs, obliterate berms and slash piles, scatter slash back on line, consult needs on marshy area	801
Completed Dozer Line	Repair Needed	Repair to specs. A few wet areas.	882
Completed Dozer Line	Repair Needed	Repair per local specs, obliterate berms, obliterate push piles, scatter slash over line	1103
Completed Dozer Line	Repair Needed	Weed free mulch (can use vegetation nearby) conduct repair to specs of repair plan.	2174
Completed Dozer Line	Repair Needed	Repair per local specs, water bars, obliterate berms, scatter slash over line	2634
Completed Dozer Line	Repair Needed	some larger dozer pushouts, sections of steep line will need water bars, recommend to use available slash to cover dozer line, one hand line comes off dozer line approx 500' from the end	3427
Completed Dozer Line	Repair Needed	Repair to dozer repair plan specifications.	4307
Completed Dozer Line	Repair Needed	water bars as needed, obliterate berms and dozer pushouts	5431
Completed Dozer Line	Completed - Inspected		12347
Access or Improved Road	Unknown		1431
Access or Improved Road	Unknown		3168
Access or Improved Road	Unknown		7803
Access or Improved Road	Unknown		9672
Access or Improved Road	Repair Needed	Repair to specs. Block access?	
Access or Improved Road	Repair Needed	Ditches need cleaned	1854



0 0.5 1 2 Miles

1:33,000 - - 10/6/2020 2121
Acres from GIS
North American 1983 Datum, LatLong Grid

