

Suppression Repair

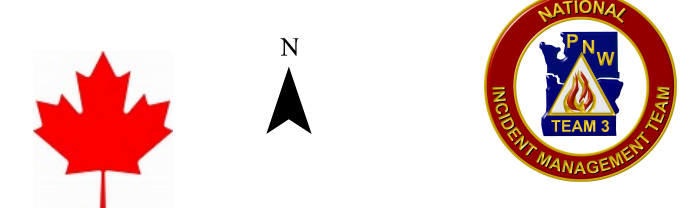
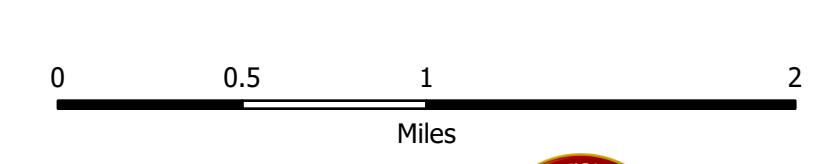
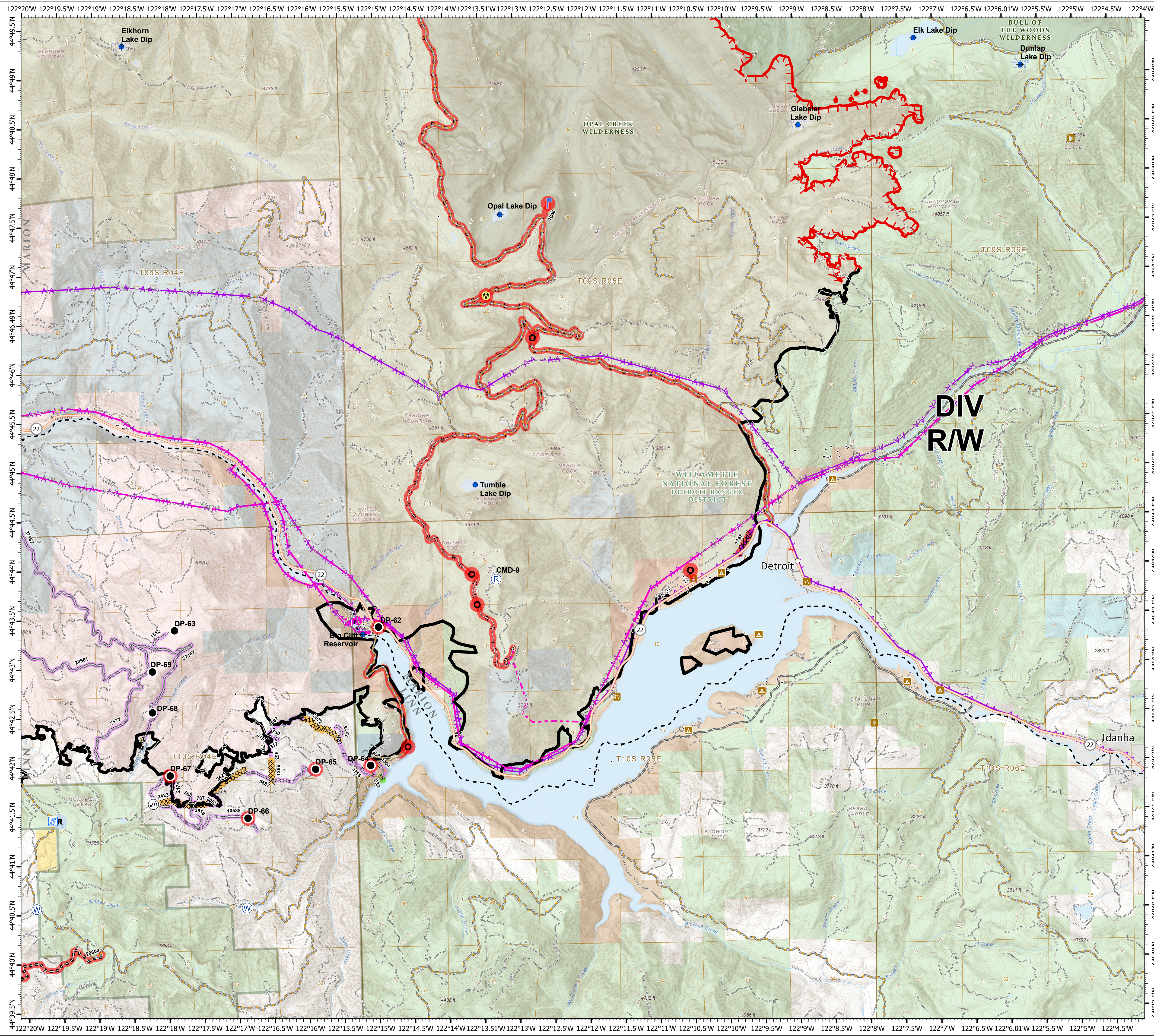
Beachie Creek
ORWIF-200299
Riverside
ORMHF-000859
10/07/20
Page: 15

- Repair Point Status**
- Repair Needed
 - No Repair Needed
 - Unknown
- Repair Line Status**
- Completed - Inspected
 - Completed - Ready for Inspection
 - Repair Needed
 - Unknown
 - Culvert
 - Dip Site
 - Drop Point
 - Hazard
 - Internet Access
 - Lookout
- Legend**
- Repeater
 - Resource Location
 - Stream Crossing
 - Water Source
 - Water Development or Draft Site
 - Wildfire Daily Fire Perimeter
 - Minor road
 - Decommissioned or Closed
 - Rivers and Streams
 - Lake, Pond or Reservoir
 - County Boundary
 - City Limits
 - Ranger District Boundaries
 - Forest Service Wilderness Area
 - Bureau of Land Management
 - U.S. Forest Service
 - Other Federal
 - Local Government
 - Private/Unknown
 - Structures
 - Fire Station
 - Campground
 - Ranger Station
 - Cabin
 - Trailhead
 - Picnic Area
 - City, Town, or Community
 - State Highway
 - County Road
 - Major road
 - Intermediate road
 - Completed Line
 - Completed Dozer Line
 - Completed Hand Line
 - Road as Completed Line
 - Access or Improved Road
 - Planned Fire Line
 - Planned Secondary Line
 - Aerial Hazard
 - Uncontrolled Fire Edge
 - BPA Transmission Lines

FC Point Type	Repair Status	Repair Comments	Label
Culvert	Repair Needed	BAER ALERT - FSR 2233, MP 4.32, remove and replace with 34" x 24" culvert.	
Culvert	Repair Needed	BAER ALERT - FSR 2233-520, MP 10.79 (from Hwy 22), remove and replace with 32" x 24" culvert.	
Culvert	Repair Needed	BAER ALERT - FSR 2233-520, MP 11.21 (from Hwy 22), remove and replace with 32" x 24" culvert.	
Culvert	Repair Needed	BAER ALERT - Replace with 36" x 34" plastic culvert.	
Drop Point	Repair Needed	Full flagging, signs, toilets.	DP-62
Drop Point	Repair Needed	Remove slash piles and flagging.	DP-64
Drop Point	Repair Needed		DP-65
Drop Point	Repair Needed		DP-66

FC Point Type	Repair Status	Repair Comments	Label
Drop Point	Unknown		DP-63
Drop Point	Unknown		DP-68
Hazard	Repair Needed	Scaling? Excavator?	
Lookout	Repair Needed		CMD-9
Repeater	Unknown		
Resource Location	No Repair Needed		
Stream Crossing	Unknown		
Water Development or Draft Site	Unknown		
Water Source	Unknown		
Water Source	Unknown		

FC Line Type	Repair Status	Repair Comments	Length Feet
Road as Completed Line	Unknown		730
Road as Completed Line	Unknown		791
Road as Completed Line	Unknown		1304
Road as Completed Line	Unknown		4715
Road as Completed Line	Repair Needed	Road as Line Needed to be Added and Repaired	
Road as Completed Line	Repair Needed	Road as Line Needed to be Added and Repaired	
Road as Completed Line	Repair Needed	Road as Line Needed to be Added and Repaired	
Road as Completed Line	Repair Needed	Road as Line Needed to be Added and Repaired	
Road as Completed Line	Repair Needed	Road as Line Needed to be Added and Repaired	
Road as Completed Line	Repair Needed	Road as Line Needed to be Added and Repaired	
Road as Completed Line	Repair Needed	Road as Line Needed to be Added and Repaired	
Planned Fire Line	Unknown		2687
Other	Repair Needed	Several Logs in ditch must be moved.	
Other	Repair Needed	Cover with brush. Pull flagging	1046
Completed Hand Line	Unknown		319
Completed Hand Line	Unknown		453
Completed Hand Line	Unknown		588
Completed Hand Line	Unknown		654
Completed Hand Line	Unknown		2063
Completed Hand Line	Unknown		2174
Completed Hand Line	Completed - Inspected	waterbars installed on 9/22 by Richardson and Hogansen	232
Completed Dozer Line	Unknown		317
Completed Dozer Line	Repair Needed	Waterbar as appropriate and seed roads, cut banks and entrances off of Hwy 22. Approximately 15 water bars will be needed. Recommend mini or medium sized excavator. Trash left behind by CPI including old telephone poles, insulators, wire, beverage bottles, food wrappers, etc.	1747
Completed Dozer Line	Completed - Ready for Inspection		787
Completed Dozer Line	Completed - Ready for Inspection		1266
Completed Dozer Line	Completed - Ready for Inspection		2421
Completed Dozer Line	Completed - Ready for Inspection		2423
Completed Dozer Line	Completed - Ready for Inspection		3072
Access or Improved Road	Unknown		1273
Access or Improved Road	Unknown		1512
Access or Improved Road	Unknown		3518
Access or Improved Road	Unknown		5587
Access or Improved Road	Unknown		7177
Access or Improved Road	Unknown		10538
Access or Improved Road	Unknown		20581
Access or Improved Road	Unknown		37167



1:33,000 - 10/6/2020 2126
Acres from GIS
North American 1983 Datum, Lat/Long Grid

