

Suppression Repair

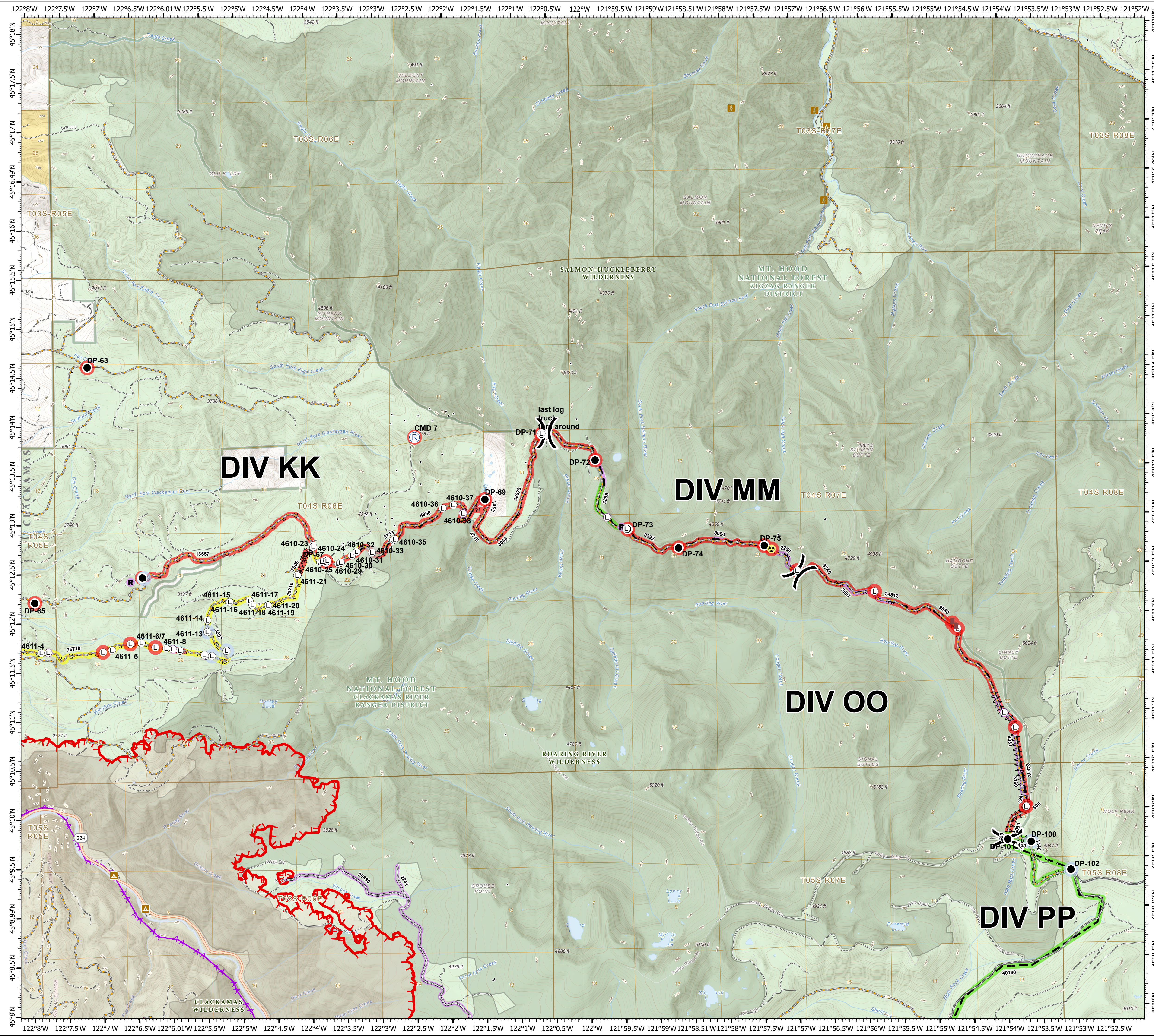
Beachie Creek
ORWIF-200299
Riverside
ORMHF-000859
10/07/20
Page: 2

- Repair Point Status**
- Completed - Inspected
 - Repair Needed
 - No Repair Needed
 - Other - See Comments
 - Unknown
- Repair Line Status**
- Completed - Inspected
 - In Progress
 - Repair Needed
 - Unknown
- Drop Point**
- Drop Point
 - Dozer Push
 - Hazard
 - Landing or Log Deck
- Repeater**
- R Repeater
 - X Resource Location
 - Division Break
 - Completed Dozer Line
 - Road as Completed Line
 - Access or Improved Road
 - Line Break Completed
 - Planned Fire Line
 - Aerial Hazard
 - Uncontrolled Fire Edge
 - Wildfire Daily Fire Perimeter
 - Structures
 - Campground
 - Trailhead
- State Highway**
- Major road
 - Intermediate road
 - Minor road
 - Decommissioned or Closed
 - Rivers and Streams
 - Lake, Pond or Reservoir
 - County Boundary
 - Ranger District Boundaries
 - Forest Service Wilderness Area
 - Bureau of Land Management
 - U.S. Forest Service
 - Private/Unknown

| FC Point Type | Repair Status | Repair Comments | Label | FC Point Type | Repair Status | Repair Comments | Label |
|---------------------|-----------------------|--|---------|---------------------|-----------------------|-----------------|---------|
| Dozer Push | Repair Needed | 18 inch thick slash lightly scattered here where soil is exposed. Lin kyan | 4610-25 | Landing or Log Deck | Completed - Inspected | | 4610-25 |
| Dozer Push | Repair Needed | 18 inch thick slash scattered slash on top of exposed soil. In kyan | 4610-26 | Landing or Log Deck | Completed - Inspected | | 4610-26 |
| Drop Point | Completed - Inspected | | DP-101 | Landing or Log Deck | Completed - Inspected | | 4610-31 |
| Drop Point | No Repair Needed | | DP-100 | Landing or Log Deck | Completed - Inspected | | 4610-32 |
| Drop Point | Repair Needed | | DP-63 | Landing or Log Deck | Completed - Inspected | | 4610-36 |
| Drop Point | Repair Needed | | DP-64 | Landing or Log Deck | Completed - Inspected | | 4610-37 |
| Drop Point | Repair Needed | | DP-65 | Landing or Log Deck | Completed - Inspected | | 4610-28 |
| Drop Point | Repair Needed | | DP-66 | Landing or Log Deck | Completed - Inspected | | 4610-38 |
| Drop Point | Repair Needed | | DP-67 | Landing or Log Deck | Completed - Inspected | | 4611-14 |
| Drop Point | Repair Needed | | DP-69 | Landing or Log Deck | Completed - Inspected | | 4611-15 |
| Drop Point | Repair Needed | | DP-71 | Landing or Log Deck | Completed - Inspected | | 4611-16 |
| Drop Point | Repair Needed | | DP-72 | Landing or Log Deck | Completed - Inspected | | 4611-17 |
| Drop Point | Repair Needed | | DP-73 | Landing or Log Deck | Completed - Inspected | | 4611-18 |
| Drop Point | Repair Needed | | DP-74 | Landing or Log Deck | Completed - Inspected | | 4611-19 |
| Drop Point | Repair Needed | | DP-75 | Landing or Log Deck | Completed - Inspected | | 4611-20 |
| Hazard | Repair Needed | waterbar and divert sweep away from failure. cutbank reworking. | 4611-21 | Landing or Log Deck | Completed - Inspected | | 4611-21 |
| Landing or Log Deck | | | 4611-4 | Landing or Log Deck | Completed - Inspected | | 4611-4 |
| Landing or Log Deck | | | 4611-5 | Landing or Log Deck | Completed - Inspected | | 4611-5 |
| Landing or Log Deck | | | 4611-6 | Landing or Log Deck | Completed - Inspected | | 4611-6 |
| Landing or Log Deck | | | 4611-7 | Landing or Log Deck | Completed - Inspected | | 4611-7 |
| Landing or Log Deck | | | 4611-8 | Landing or Log Deck | Completed - Inspected | | 4611-8 |
| Landing or Log Deck | | | 4610-23 | Landing or Log Deck | Completed - Inspected | | 4610-23 |
| Landing or Log Deck | | | 4610-24 | Landing or Log Deck | Completed - Inspected | | 4610-24 |

| FC Line Type | Repair Status | Repair Comments | Length Feet |
|------------------------|-----------------------|---|-------------|
| Road as Completed Line | Unknown | | 2259 |
| Road as Completed Line | Unknown | | 3044 |
| Road as Completed Line | Repair Needed | remove masticator debris from ditches and culvert, grade road for drainage and waterbar, remove berm on shoulder scatter large slash accumulation | 3697 |
| Road as Completed Line | Repair Needed | Light chipping needed | 420 |
| Road as Completed Line | Repair Needed | | 2001 |
| Road as Completed Line | Repair Needed | Road grading, remove berms, repair cut and fill slopes (marked separately), and chipping -Sung | 3740 |
| Road as Completed Line | Repair Needed | | 3753 |
| Road as Completed Line | Repair Needed | | 4218 |
| Road as Completed Line | Repair Needed | Needs grading of berm caused by debris. Masticated edge needs follow up hand cutting (stems were cut too long). | 4956 |
| Road as Completed Line | Repair Needed | Operations did not repair road. Suppression activities did not occur with heavy machinery. READ Kidwell 10/6/20 | 9892 |
| Road as Completed Line | Repair Needed | 4610 segment 2 - Begin grading to remove berm on roadside from tracked equipment and waterbar, begin slash removal from drainage features, barricade light grading, 4610 brushing and ruts - road prim needs brushed, ditches pulled and graded to remove ruts and have proper drainage. Will require spot rock, starts at 150 spur, this segment has worst rutting | 13557 |
| Road as Completed Line | In Progress | excavator cleaning ditch. READ Kidwell 10-6 | 4507 |
| Road as Completed Line | In Progress | slash, roadways, decompanction by excavator in progress. ditch at start along 4611 will be reestablished. READ Kidwell 10/6 | 7006 |
| Road as Completed Line | In Progress | Excavator cleaned ditch along road completed. An excavator walk out it will need to knock down the small berms that will prevent water on road from entering ditch. Areas of expose dirt along areas of ditch repair. Most of these exposed dirt areas drain into ditch release culverts, little risk of sediment entering the streams below road. Evaluate after rain event in a couple days to determine if sediment traps will be needed over winter. READ Kidwell 10/6/20 | 25710 |
| Road as Completed Line | Completed - Inspected | Sweeping of debris and light chipping need at intersection of DP 102 | |

| FC Line Type | Repair Status | Repair Comments | Length Feet |
|-------------------------|-----------------------|--|-------------|
| Road as Completed Line | Completed - Inspected | Sweeping of debris | 1440 |
| Road as Completed Line | Completed - Inspected | remove berms on downhill side to allow drainage on road. Installing waterbars where needed for drainage, cleaning culverts, and ditches. If drainage of road or culvert is functional waterbars are not required. READ Kidwell 10/6/2020 | 3885 |
| Planned Fire Line | Unknown | | 8084 |
| Planned Fire Line | Unknown | | 38578 |
| Planned Fire Line | Repair Needed | Road grading, remove berms, repair cut and fill slopes (marked separately), and chipping -Sung | 24812 |
| Planned Fire Line | Completed - Inspected | Chipping needed throughout NF 58 and entry to NF 5830 and NF 150. Crews needed to sweep debris. | 40140 |
| Other | Repair Needed | Remove slash in ditch roadside. | |
| Line Break Completed | Unknown | | 3160 |
| Line Break Completed | Unknown | | 4331 |
| Line Break Completed | Repair Needed | Logs in ditch need to be removed. Chip smaller material. Berms need to be knocked down. Rocky debris behind shoulder needs additional repair | 2083 |
| Completed Dozer Line | Repair Needed | Dozer line needs significant repair. Follow decom with slash and water bars. | |
| Completed Dozer Line | Repair Needed | rehab reestablish foot trail | |
| Completed Dozer Line | Repair Needed | Pull in berms, may not be needed until log deck is removed | 194 |
| Completed Dozer Line | Repair Needed | | 506 |
| Access or Improved Road | Unknown | | 2241 |
| Access or Improved Road | Unknown | | 20630 |



0 0.5 1 2 Miles

1:33,000 - 10/6/2020 2112
Acres from GIS
North American 1983 Datum, Lat/Long Grid