

Suppression Repair

Beachie Creek
ORWIF-200299
Riverside 6
10/07/20
Page: 6

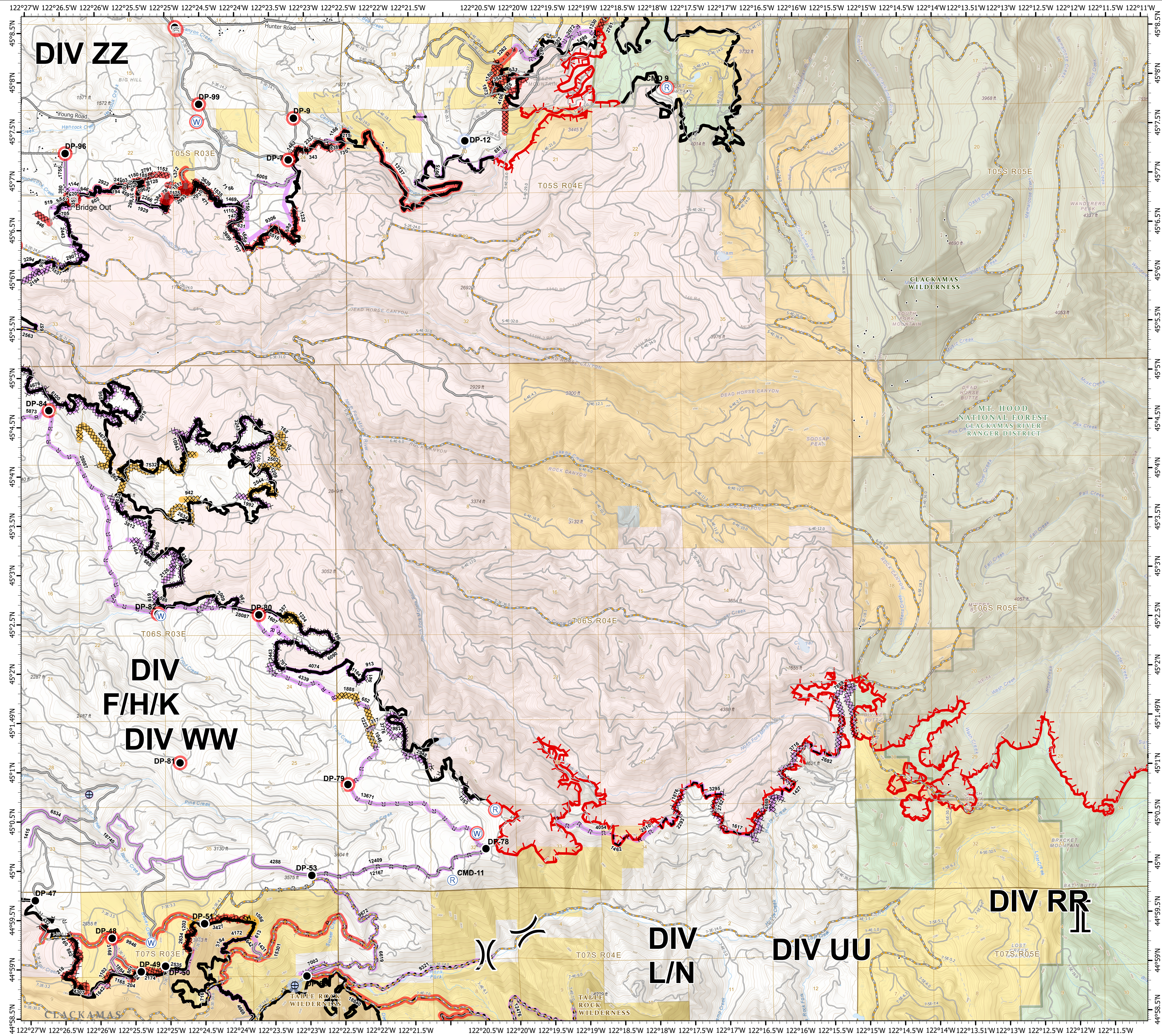
- Repair Point Status**
- Repair Needed
 - No Repair Needed
 - Unknown
- Repair Line Status**
- Completed - Ready for Inspection
 - Repair Needed
 - Unknown
- Legend**
- Value at Risk
 - Division Break
 - Branch Break
 - Contained Line
 - Completed Dozer Line
 - Completed Hand Line
 - Road as Completed Line
 - Access or Improved Road
 - Line Break Completed
 - Planned Fire Line
 - Planned Secondary Line
 - Uncontrolled Fire Edge
 - Wildfire Daily Fire Perimeter
 - County Road
 - Intermediate road
 - Minor road
 - Decommissioned or Closed
 - Rivers and Streams
 - Lake, Pond or Reservoir
 - County Boundary
 - Ranger District Boundaries
 - BLM Wilderness Area
 - Forest Service Wilderness Area
 - Bureau of Land Management
 - U.S. Forest Service
 - State
 - Private/Unknown
 - Bridge
 - Drop Point
 - Dozer Push
 - Gate
 - Repeater
 - Water Source
 - Water Development or Draft Site

FC Point Type	Repair Status	Repair Comments	Label
Bridge	Repair Needed		
Bridge	Repair Needed		Bridge Out
Dozer Push	Repair Needed		
Dozer Push	Repair Needed		
Drop Point	No Repair Needed		DP-12
Drop Point	Repair Needed		DP-2
Drop Point	Repair Needed	Richardson: 0.25 acre of disturbed compacted bare soil. Seed, straw, cover with slash. Possible decompact with excavator if available	DP-48
Drop Point	Repair Needed		DP-7
Drop Point	Repair Needed		DP-79
Drop Point	Repair Needed		DP-80
Drop Point	Repair Needed		DP-81
Drop Point	Repair Needed		DP-82
Drop Point	Repair Needed		DP-84
Drop Point	Repair Needed		DP-9
Drop Point	Repair Needed		DP-96
Drop Point	Repair Needed		DP-97
Drop Point	Repair Needed		DP-99
Drop Point	Unknown		DP-47

FC Point Type	Repair Status	Repair Comments	Label
Drop Point	Unknown		DP-49
Drop Point	Unknown		DP-50
Drop Point	Unknown		DP-51
Drop Point	Unknown		DP-52
Drop Point	Unknown		DP-53
Drop Point	Unknown		DP-78
Gate	Unknown		
Repeater	Repair Needed		CMD-9
Repeater	Unknown		CMD-11
Repeater	Unknown		CMD-10
Value at Risk	Repair Needed		
Water Development or Draft Site	No Repair Needed		
Water Development or Draft Site	Unknown		
Water Source	Repair Needed		
Water Source	Repair Needed		
Water Source	Unknown		
Water Source	Unknown		

FC Line Type	Repair Status	Repair Comments	Length Feet
Road as Completed Line	Unknown		194
Road as Completed Line	Unknown		245
Road as Completed Line	Unknown		298
Road as Completed Line	Unknown		317
Road as Completed Line	Unknown		496
Road as Completed Line	Unknown		646
Road as Completed Line	Unknown		652
Road as Completed Line	Unknown		707
Road as Completed Line	Unknown		747
Road as Completed Line	Unknown		851
Road as Completed Line	Unknown		913
Road as Completed Line	Unknown		1110
Road as Completed Line	Unknown		1144
Road as Completed Line	Unknown		1469
Road as Completed Line	Unknown		1607
Road as Completed Line	Unknown		1929
Road as Completed Line	Unknown		2266
Road as Completed Line	Unknown		2510
Road as Completed Line	Unknown		4054
Road as Completed Line	Unknown		4074
Road as Completed Line	Unknown		4339
Road as Completed Line	Unknown		6005
Road as Completed Line	Unknown		12167
Road as Completed Line	Unknown		13671
Road as Completed Line	Unknown		28087
Road as Completed Line	Repair Needed	waterbar	1372
Proposed Dozer Line	Unknown		9306
Planned Fire Line	Unknown		1427
Planned Fire Line	Unknown		1462
Planned Fire Line	Unknown		1617
Planned Fire Line	Unknown		2293
Planned Fire Line	Unknown		2682
Planned Fire Line	Unknown		3295
Other	Unknown		
Other	Unknown		
Line Break Completed	Repair Needed		343
Completed Hand Line	Unknown		
Completed Hand Line	Unknown		
Completed Hand Line	Unknown		185
Completed Hand Line	Unknown		311
Completed Hand Line	Unknown		588
Completed Hand Line	Unknown		1156
Completed Hand Line	Unknown		1154
Completed Hand Line	Unknown		2096
Completed Hand Line	Unknown		9975
Completed Hand Line	Repair Needed		596
Completed Hand Line	Repair Needed		602
Completed Hand Line	Repair Needed		866
Completed Hand Line	Repair Needed		1026
Completed Hand Line	Repair Needed	A mix of Existing trail, hand line, and cold trail.	1301
Completed Hand Line	Repair Needed		2923
Completed Hand Line	Repair Needed		13137
Completed Dozer Line	Unknown		
Completed Dozer Line	Unknown		
Completed Dozer Line	Unknown		942
Completed Dozer Line	Unknown		1046
Completed Dozer Line	Unknown		1222
Completed Dozer Line	Unknown		1234
Completed Dozer Line	Unknown		1885
Completed Dozer Line	Unknown		2562
Completed Dozer Line	Unknown		2594
Completed Dozer Line	Unknown		3634
Completed Dozer Line	Unknown		4678
Completed Dozer Line	Unknown		7532
Access or Improved Road	Unknown		4288
Access or Improved Road	Unknown		6534
Access or Improved Road	Unknown		9672

FC Line Type	Repair Status	Repair Comments	Length Feet
Completed Dozer Line	Unknown		966
Completed Dozer Line	Unknown		961
Completed Dozer Line	Unknown		982
Completed Dozer Line	Unknown		1071
Completed Dozer Line	Unknown		1153
Completed Dozer Line	Unknown		1180
Completed Dozer Line	Unknown		1209
Completed Dozer Line	Unknown	No repair needed	1353
Completed Dozer Line	Unknown		1464
Completed Dozer Line	Unknown		1535
Completed Dozer Line	Unknown		1668
Completed Dozer Line	Unknown		1750
Completed Dozer Line	Unknown		1876
Completed Dozer Line	Unknown		1992
Completed Dozer Line	Unknown		2009
Completed Dozer Line	Unknown		2030
Completed Dozer Line	Unknown		2326
Completed Dozer Line	Unknown		2782
Completed Dozer Line	Unknown		2807
Completed Dozer Line	Unknown		2948
Completed Dozer Line	Unknown		2993
Completed Dozer Line	Unknown		3243
Completed Dozer Line	Unknown		3443
Completed Dozer Line	Unknown		3716
Completed Dozer Line	Unknown		3776
Completed Dozer Line	Unknown		3812
Completed Dozer Line	Unknown		4349
Completed Dozer Line	Unknown		4469
Completed Dozer Line	Unknown		6090
Completed Dozer Line	Unknown		6100
Completed Dozer Line	Unknown		7859
Completed Dozer Line	Unknown		8018
Completed Dozer Line	Unknown		10949
Completed Dozer Line	Repair Needed		78
Completed Dozer Line	Repair Needed		100
Completed Dozer Line	Repair Needed		471
Completed Dozer Line	Repair Needed		895
Completed Dozer Line	Repair Needed	pull berms, waterbars, scatter slash, block any access	1175
Completed Dozer Line	Repair Needed		1232
Completed Dozer Line	Repair Needed		1384
Completed Dozer Line	Repair Needed		1463
Completed Dozer Line	Repair Needed		1511
Completed Dozer Line	Repair Needed		2337
Completed Dozer Line	Repair Needed		2791
Completed Dozer Line	Repair Needed		3639
Completed Dozer Line	Repair Needed		3699
Completed Dozer Line	Repair Needed		5155
Completed Dozer Line	Completed - Ready for Inspection	Dozer line 357 on repair map. Repair completed on 10/9/2020	357
Completed Dozer Line	Completed - Ready for Inspection		700
Completed Dozer Line	Completed - Ready for Inspection	Dozer line 865 on repair map. Repair completed 10/5/2020.	865
Completed Dozer Line	Completed - Ready for Inspection		942
Completed Dozer Line	Completed - Ready for Inspection		1046
Completed Dozer Line	Completed - Ready for Inspection	Dozer line 1234 on repair map. Completed 10/5/2020	1234
Completed Dozer Line	Completed - Ready for Inspection		1885
Completed Dozer Line	Completed - Ready for Inspection	Dozer line 2564 on repair map. Repair completed on 10/5/2020	2564
Completed Dozer Line	Completed - Ready for Inspection		3634
Completed Dozer Line	Completed - Ready for Inspection	Dozer line 4677 on repair map. Completed 10/4/2020	4678
Completed Dozer Line	Completed - Ready for Inspection	Dozer line 7532 on repair map. Repair completed on 10/5/2020	7532
Access or Improved Road	Unknown		4288
Access or Improved Road	Unknown		6534
Access or Improved Road	Unknown		9672



0 0.5 1 2 Miles

1:33,000 - 10/6/2020 2116
Acres from GIS
North American 1983 Datum, LatLong Grid