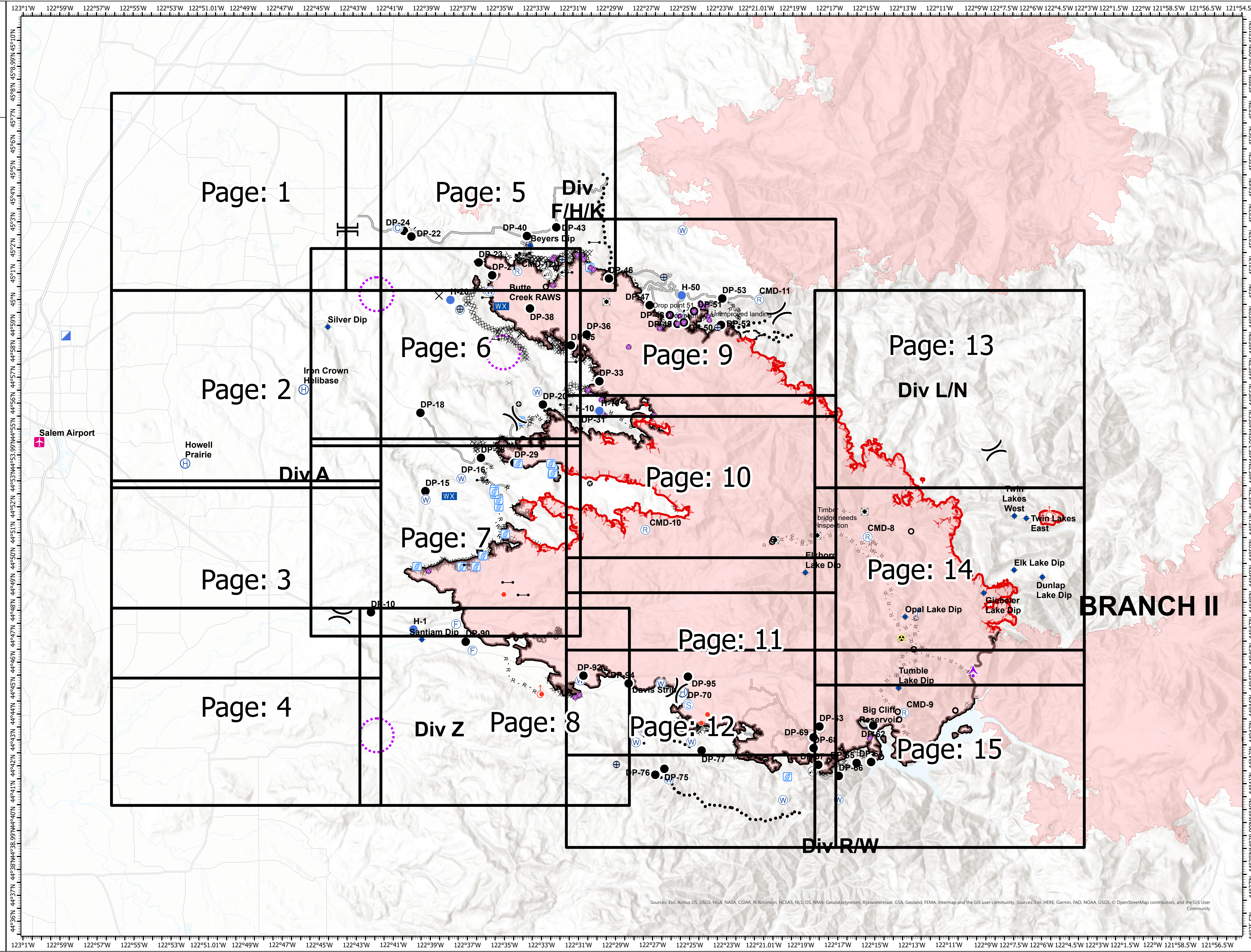
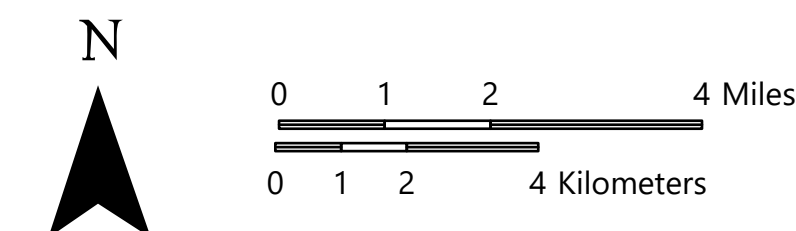


IAP Index

Beachie Creek
ORWIF-200299
10/09/20

193,613 acres | 78,321 ha
as of 10/07/20 @0800

- Page Index
- Label Point GISS Edit Service
- Aerial Hazard
- Airstrip or Airport
- Bridge
- Camp
- Closure
- Culvert
- Dip Site
- Drop Point
- Fire Station
- Gate
- Hazard
- Helibase
- Helispot
- Hot Spot
- Incident Command Post
- Internet Access
- Lookout
- Mobile Weather Unit
- Repair Point
- Repeater
- Resource Location
- Road Repair
- Spot Fire
- Staging Area
- Stream Crossing
- Water Source
- Water Development or Draft Site
- Division Break
- Branch Break
- Completed Dozer Line
- Completed Hand Line
- Road as Completed Line
- Access or Improved Road
- Line Break Completed
- Proposed Dozer Line
- Planned Fire Line
- Planned Secondary Line
- UAS Launch and Recovery Zone
- Other
- Unknown
- Uncontrolled Fire Edge
- Wildfire Daily Fire Perimeter



Sources: Esri, Airbus DS, USGS, NGA, NASA, CGIAR, N Robinson, NCEAS, NLS, OS, NMA, Geodatasystemen, Rijkswaterstaat, GSA, Geoland, FEMA, Intermap and the GIS user community, Sources: Esri, HERE, Garmin, FAO, NOAA, USGS, © OpenStreetMap contributors, and the GIS User Community