

Suppression Repair

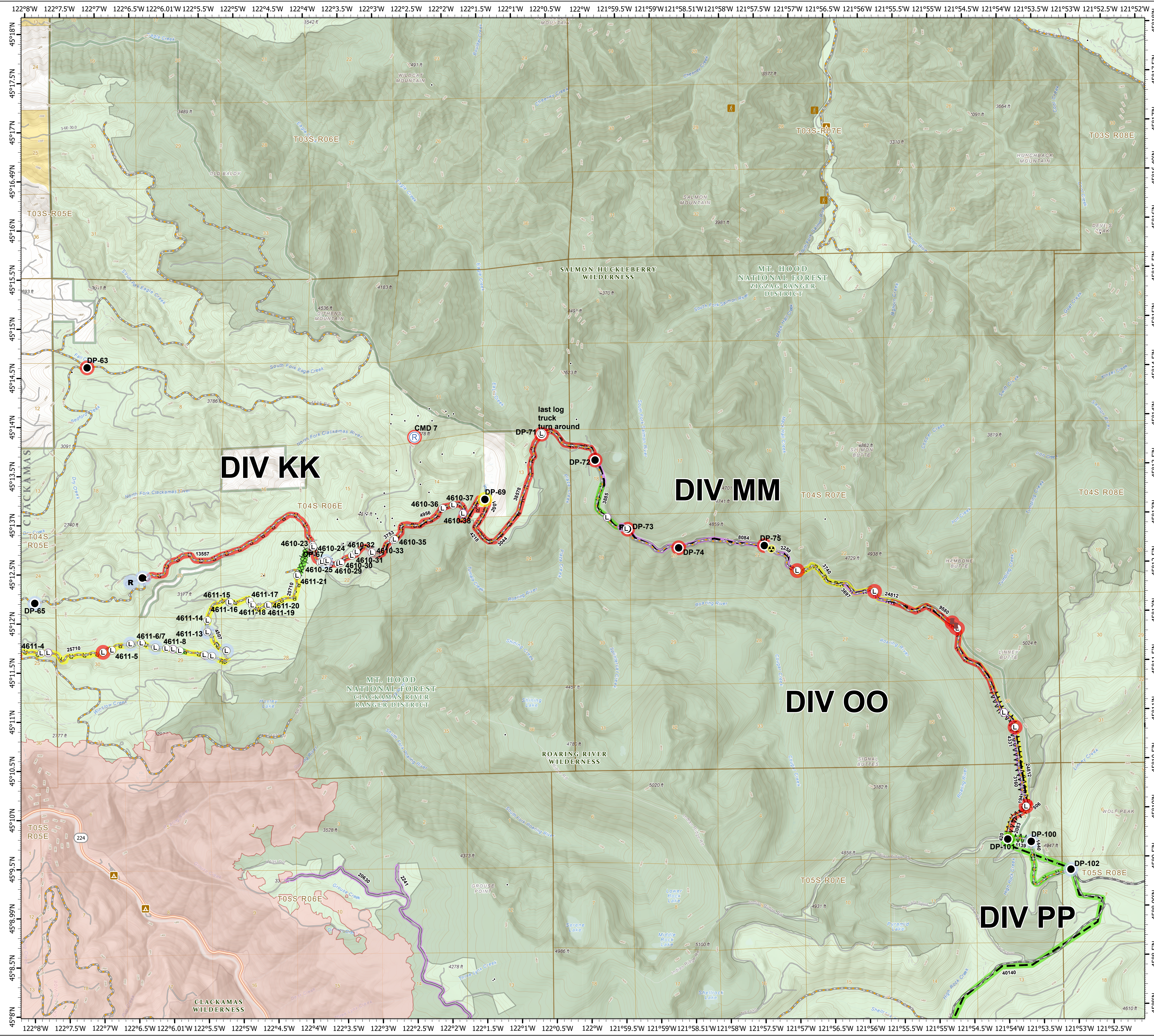
Beachie Creek
ORWIF-200299
Riverside
ORMHF-000859
10/09/20
Page: 2

- ▲ Structures
- ▲ Campground
- ▲ Trailhead
- State Highway
- Major road
- Intermediate road
- Minor road
- Decommissioned or Closed
- County Boundary
- Ranger District Boundaries
- Forest Service Wilderness Area
- Bureau of Land Management
- U.S. Forest Service
- Private/Unknown

FC Point Type	Repair Status	Repair Comments	Label	FC Point Type	Repair Status	Repair Comments	Label
Dozer Push	Repair Needed	18 inch thick slash lightly scattered here where soil is exposed. -Ln kyan	4610-25	Landing or Log Deck			4610-27
Dozer Push	Repair Needed	18 inch thick slash scattered slash on top of exposed soil. In kyan 10-9-20	4610-28	Landing or Log Deck			4610-29
Drop Point	Completed - Inspected		DP-101	Landing or Log Deck			4610-30
Drop Point	In Progress		DP-69	Landing or Log Deck			4610-31
Drop Point	No Repair Needed		DP-100	Landing or Log Deck			4610-32
Drop Point	No Repair Needed		DP-102	Landing or Log Deck			4610-33
Drop Point	No Repair Needed		DP-45	Landing or Log Deck			4610-34
Drop Point	No Repair Needed		DP-66	Landing or Log Deck			4610-35
Drop Point	No Repair Needed		DP-67	Landing or Log Deck			4610-36
Drop Point	Repair Needed	Cover exposed soil with either slash or redwood seed -Kyan 10-9-20	DP-63	Landing or Log Deck			4611-14
Drop Point	Repair Needed		DP-64	Landing or Log Deck			4611-15
Drop Point	Repair Needed		DP-71	Landing or Log Deck			4611-16
Drop Point	Repair Needed		DP-72	Landing or Log Deck			4611-17
Drop Point	Repair Needed		DP-73	Landing or Log Deck			4611-18
Drop Point	Repair Needed		DP-74	Landing or Log Deck			4611-19
Drop Point	Repair Needed		DP-75	Landing or Log Deck			4611-20
Hazard	Other - See Comments	Unit - waterbar and divert steep away from failure. cutbank leveling	4611-4	Landing or Log Deck			4611-8
Landing or Log Deck			4611-5	Landing or Log Deck			4611-9

FC Line Type	Repair Status	Repair Comments	Length Feet
Road as Completed Line	Unknown		2259
Road as Completed Line	Unknown		3044
Road as Completed Line	Repair Needed	remove masticator debris from ditches and culvert, grade road for drainage and waterbar, remove berm on shoulder scatter large slash accumulation	3697
Road as Completed Line	Repair Needed	Light chipping needed	420
Road as Completed Line	Repair Needed		2001
Road as Completed Line	Repair Needed		3753
Road as Completed Line	Repair Needed		4218
Road as Completed Line	Repair Needed	Needs grading of berm caused by dozer. Masticator edge needs follow up hand cutting (stems were out too long).	4956
Road as Completed Line	Repair Needed		9580
Road as Completed Line	Repair Needed	4610 segment 2 - Begin grading to remove berm on roadside from tracked equipment and waterbar, begin slash removal from drainage features, barricade? light grading. 4610 brushing and cuts - road prism needs brushed, ditches pulled and graded to remove rubs and have proper drainage. Will require spot rock, starts at 150 spur, the segment has worse rutting	13557
Road as Completed Line	In Progress	Road grading, remove berms, repair cut and fill slopes (marked separately), and chipping -Sung, Robert Sanders, stumps, slash, berm and grading underway	3740
Road as Completed Line	In Progress	excavator cleaning ditch. READ Kidwell 10-6	4507
Road as Completed Line	In Progress	Excavator cleaned ditch along road completed. As excavator walks out it will need to knock down the small berms that will prevent water on road from entering ditch. Areas of expose dirt along areas of ditch repair. Most of these exposed dirt areas drain into ditch release culverts, little risk of sediment entering live streams below road. Evaluate after rain event in a couple days to determine if sediment traps will be needed over winter. READ Kidwell 10/6/20	25710
Road as Completed Line	Completed - Inspected	Sweeping of debris and light chipping need at intersection of DP 102	1440

FC Line Type	Repair Status	Repair Comments	Length Feet
Road as Completed Line	Completed - Inspected	remove berms on downhill side to allow drainage on road. Installing waterbars where needed for drainage, cleaning culverts, and ditches. If drainage of road or culvert is functional waterbars are not required. READ Kidwell 10/6/2020	3885
Planned Fire Line	Unknown	This was planned ditch. We are editing actual complete line for repair needs.	8084
Planned Fire Line	In Progress	Road grading, remove berms, repair cut and fill slopes (marked separately), and chipping -Sung, Robert Sanders, stumps, slash, berm and grading underway 10/7/20. Div a.d says done by 10/9	24812
Planned Fire Line	Completed - Inspected	Chipping needed throughout NF 58 and entry to NF 5330 and NF 150. Crews needed to sweep debris.	40140
Other	Completed - Inspected	10/07/2020mkel_nic - Inspected. 10/06/2020kdwl - Remove slash in ditch roadside.	
Line Break Completed	Unknown		3160
Line Break Completed	Unknown		4331
Line Break Completed	Repair Needed	Logs in ditch need to be removed. Chip smaller material. Berms need to be knocked down. Rocky debris behind shoulder needs additional repair	2083
Line Break Completed	Completed - Inspected	Light chipping and sweeping needed	1139
Completed Dozer Line	Repair Needed	rehab reestablish foot trail	
Completed Dozer Line	Repair Needed	Pull in berms, may not be needed until log deck is removed	194
Completed Dozer Line	Repair Needed	Robert Sanders: the road edge is chipped up from machines and parking, seed and/or slash, same treatment around log deck	506
Completed Dozer Line	Completed - Inspected	10/07/2020mkel_nic - inspected with Sanders and Mijuan. Date unknown - Dozer line needs significant repair. Follow decom with slash and water bars.	2241
Access or Improved Road	Unknown		20630



0 0.5 1 2
Miles

North

1:33,000 - - 10/8/2020 2120
Acres from GIS
North American 1983 Datum, Lat/Long Grid