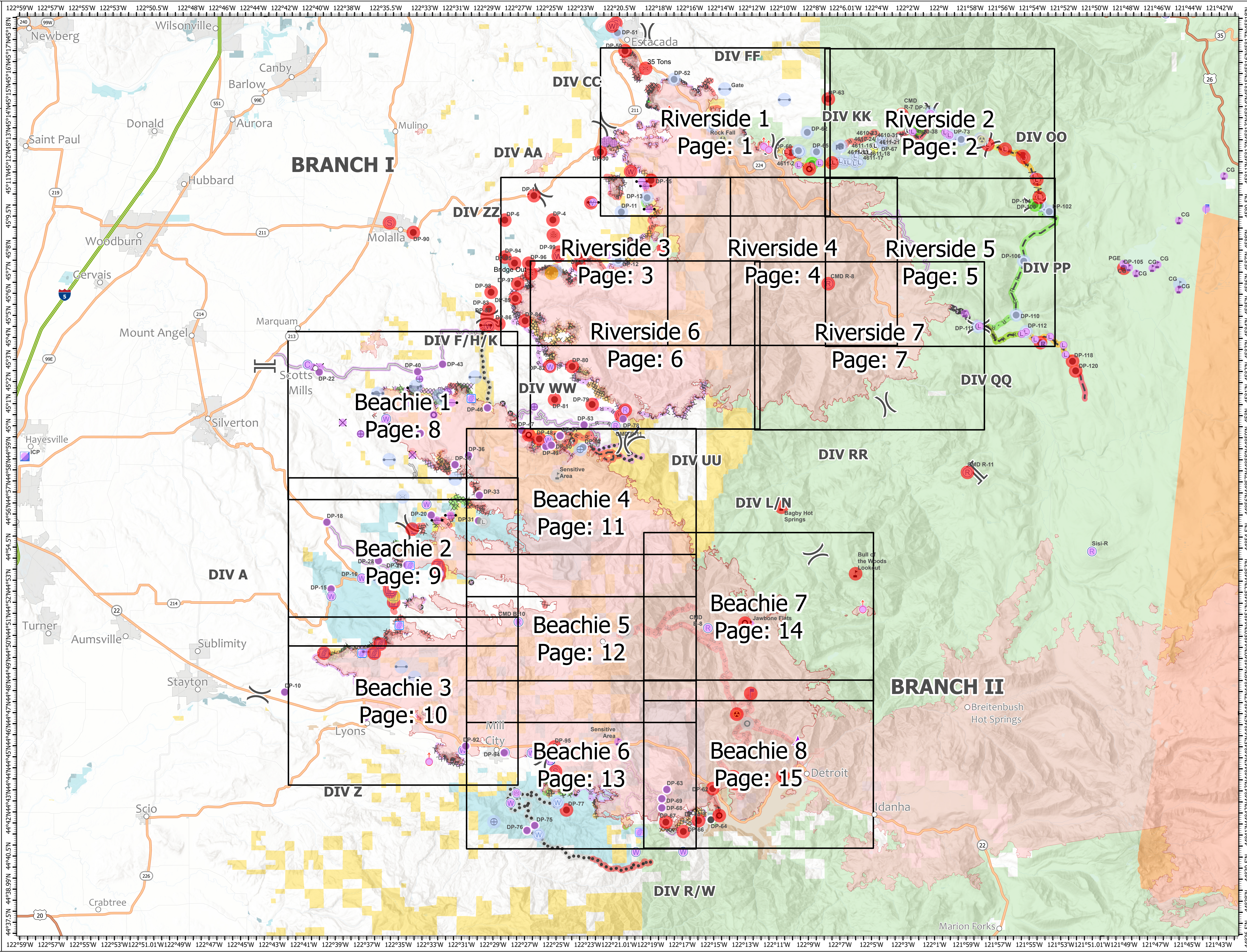


Suppression Repair Index

Beachie Creek ORWIF-200299
Riverside ORMHF-000859

10/10/20

- City, Town, or Community Label Point 2020_GISS_Edit
- Completed - Inspected
- Repair Needed
- No Repair Needed
- Other - See Comments
- Unknown
- Aerial Hazard
- Bridge
- Camp
- Drop Point
- Gate
- Hazard
- Helibase
- Incident Command Post
- Landing or Log Deck
- Lookout
- Repeater
- Spot Fire
- Value at Risk
- Division Break
- Branch Break
- Innate State
- US Highway
- State Highway
- Completed - Inspected
- In Use - Fire Management
- Completed - Ready for Inspection
- In Progress
- Repair Needed
- Other - See Comments
- Unknown
- Completed Dozer Line
- Completed Hand Line
- Road as Completed Line
- Access or Improved Road
- Line Break Completed
- Completed Plow Line
- Proposed Dozer Line
- Planned Fire Line
- Planned Secondary Line
- Repair Line
- Other
- Unknown
- Completed Dozer Line
- Completed Hand Line
- Road as Completed Line
- Access or Improved Road
- Line Break Completed
- Completed Plow Line
- Proposed Dozer Line
- Planned Fire Line
- Planned Secondary Line
- Repair Line
- Other
- Unknown
- Wildfire Daily Fire Perimeter
- Wildfire Daily Fire Perimeter
- City Limits
- Bureau of Land Management
- U.S. Forest Service
- U.S. Fish and Wildlife Service
- Bureau of Indian Affairs
- Other Federal
- State
- Local Government
- Private/Unknown



1:135,000 - PNWMT3 - 10/9/2020 2218

North American 1983 Datum, LatLong Grid