

# Suppression Repair

Beachie Creek  
ORWIF-200299  
**Beachie 3**

Riverside  
ORMHF-000859  
10/10/20  
Page: 10

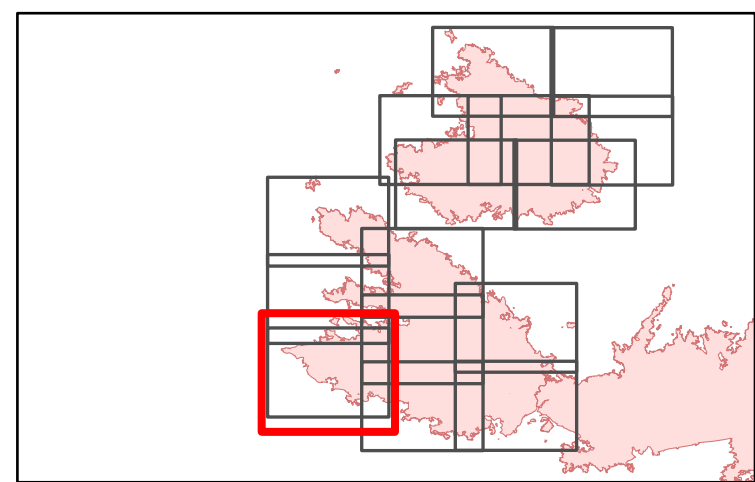
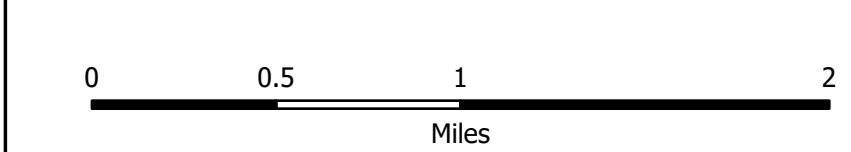
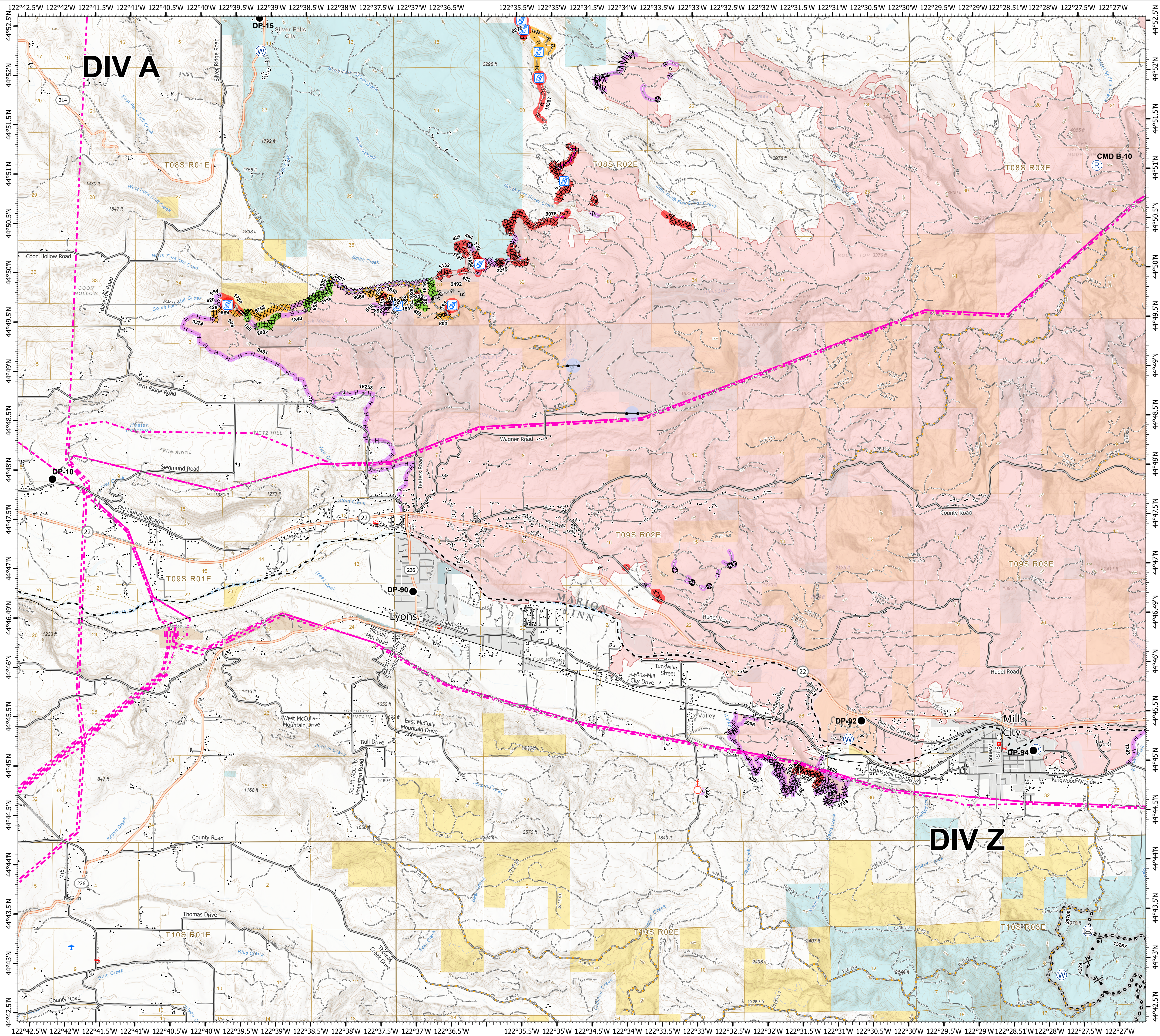
- BPA Transmission Lines
- ▲ Structures
- Fire Station
- Law Enforcement
- + Airstrip
- City, Town, or Community
- State Highway
- County Road
- Intermediate road
- Minor road
- Decommissioned or Closed
- Railroad
- - - County Boundary
- City Limits
- Bureau of Land Management
- Other Federal
- State
- Local Government
- Private/Unknown

FC Point Type	Repair Status	Repair Comments	Label
Bridge	Unknown		
Drop Point	Unknown		DP-10
Drop Point	Unknown		DP-15
Drop Point	Unknown		DP-90
Drop Point	Unknown		DP-92
Drop Point	Unknown		DP-94
Gate	No Repair Needed		
Gate	No Repair Needed		
Gate	Unknown		
Repeater	Unknown		CMD B-10
Spot Fire	Unknown		
Stream Crossing	Completed - Ready for Inspection	Additional effort would probably not improve the stream.	
Stream Crossing	Repair Needed	consult hydrologist	

FC Point Type	Repair Status	Repair Comments	Label
Stream Crossing	Repair Needed	consult hydrologist	
Stream Crossing	Repair Needed	consult hydro	
Stream Crossing	Repair Needed		
Stream Crossing	Repair Needed	Plugged culvert with water running down the road.	
Stream Crossing	Repair Needed	Trenching may reroute the stream.	
Stream Crossing	Repair Needed	Dozer line E of creek should be done first.	
Stream Crossing	Unknown	Consult hydrologist	
Stream Crossing	Unknown		
Water Source	Unknown		
Water Source	Unknown		
Water Source	Unknown		
Water Source	Unknown		

FC Line Type	Repair Status	Repair Comments	Length Feet
Unknown	In Use - Fire Management		
Unknown	In Use - Fire Management		9075
Road as Completed Line	Unknown		
Road as Completed Line	Unknown		
Road as Completed Line	Unknown		
Road as Completed Line	Unknown		
Road as Completed Line	Unknown		
Road as Completed Line	Unknown		
Road as Completed Line	Unknown		
Road as Completed Line	Unknown		
Road as Completed Line	Unknown		
Road as Completed Line	Unknown		
Road as Completed Line	Unknown		
Road as Completed Line	Unknown	Consult with private land owner.	
Road as Completed Line	Unknown		420
Road as Completed Line	Unknown		426
Road as Completed Line	Unknown		594
Road as Completed Line	Unknown	This is an old road bed, possibly abandoned or decommissioned, consult READ	706
Road as Completed Line	Unknown	Consult landowner	887
Road as Completed Line	Unknown	Contact landowner	897
Road as Completed Line	Unknown	repair per local unit specs	1840
Road as Completed Line	Unknown	No repair needed	2427
Road as Completed Line	Unknown		1582
Road as Completed Line	Repair Needed	Pull cup trench and add water diversion	
Road as Completed Line	Repair Needed	old road on BLM, consult READs from local unit, possibly reduce or decommission	1730
Road as Completed Line	Other - See Comments	repair per local unit specs, consult BLM trails	989
Road as Completed Line	Other - See Comments	repair per local unit specs, consult BLM trails	2492
Other	Unknown		
Other	Unknown		
Other	Unknown		
Other	Unknown		
Other	Unknown		
Other	Unknown		
Other	Unknown		
Other	Unknown	consult local unit	720
Completed Hand Line	Unknown		
Completed Hand Line	Unknown		
Completed Hand Line	Unknown		
Completed Hand Line	Unknown		
Completed Hand Line	Unknown	Wet hillside	146
Completed Hand Line	Unknown	Wet hillside	201
Completed Hand Line	Unknown	consult land owner	221
Completed Hand Line	Unknown	repair per local unit specs	422
Completed Hand Line	Unknown	repair per local unit, BLM specs, boggy area pond at end of line	745
Completed Hand Line	Unknown	repair per local unit specs	1127
Completed Hand Line	Repair Needed	Obliterate berm and push piles, pull slash over line, no need for water bars	1132
Completed Hand Line	Repair Needed	repair to local unit specs	1450
Completed Hand Line	Completed - Ready for Inspection	Consult landowner	398
Completed Hand Line	Completed - Ready for Inspection	Remove berms and push piles, add slash over it	803
Completed Hand Line	Completed - Ready for Inspection	repair per local specs	1540
Completed Hand Line	Completed - Ready for Inspection	Repair per unit specs,	3530
Completed Hand Line	Completed - Ready for Inspection	repair per local unit specs	5758
Completed Hand Line	Completed - Inspected	repair per local unit specs	70
Completed Hand Line	Completed - Inspected	Repair per local unit specs	218
Completed Hand Line	Completed - Inspected	Repair per local specs	658
Completed Hand Line	Completed - Inspected	If a closed road, remove, removed berms dozer pushes, spread slash on line	665
Completed Hand Line	Completed - Inspected	repair per unit specs	906
Completed Hand Line	Completed - Inspected	Remove push piles and berms, water bars as needed	1025
Completed Hand Line	Completed - Inspected	Consult local landowner	1092
Completed Hand Line	Completed - Inspected	Repair per local unit specs, obliterate berms and push piles, scatter slash back over line	1616

FC Line Type	Repair Status	Repair Comments	Length Feet
Completed Dozer Line	Unknown		
Completed Dozer Line	Unknown		
Completed Dozer Line	Unknown		
Completed Dozer Line	Unknown	consult land owner	320
Completed Dozer Line	Unknown		413
Completed Dozer Line	Unknown	repair per local unit specs	439
Completed Dozer Line	Unknown	repair per local unit spec	519
Completed Dozer Line	Unknown		846
Completed Dozer Line	Unknown		1607
Completed Dozer Line	Unknown		1703
Completed Dozer Line	Unknown	Consult landowner	2319
Completed Dozer Line	Unknown		3270
Completed Dozer Line	Unknown		5928
Completed Dozer Line	Unknown		9669
Completed Dozer Line	Repair Needed		
Completed Dozer Line	Repair Needed	Constructed with excavator big cuts and some wet areas.	
Completed Dozer Line	Repair Needed	Construct water bars and/or dips in accordance with suppression repair plan	
Completed Dozer Line	Repair Needed	Pull back berm, construct water bars and/or dips in accordance with suppression repair plan	
Completed Dozer Line	Repair Needed	Pull berm back. Pull slash across dozer line.	
Completed Dozer Line	Repair Needed	Some boggy areas with a dozer trench	
Completed Dozer Line	Repair Needed	Construct water bars, pull back berm. Consult private land owner	
Completed Dozer Line	Repair Needed	Knock down berms, construct water bars and/or dips. Consult with private land owner	
Completed Dozer Line	Repair Needed	Knock down berm. Consult private land owner	
Completed Dozer Line	Repair Needed		0
Completed Dozer Line	Repair Needed	Some boggy areas with a dozer trench	0
Completed Dozer Line	Repair Needed	Remove push piles and berms, add slash over	146
Completed Dozer Line	Repair Needed	repair per unit specs	201
Completed Dozer Line	Repair Needed	consult land owner	221
Completed Dozer Line	Repair Needed	repair per local unit specs	422
Completed Dozer Line	Repair Needed	repair per local unit specs	745
Completed Dozer Line	Repair Needed	repair per local unit specs	1127
Completed Dozer Line	Repair Needed	Obliterate berm and push piles, pull slash over line, no need for water bars	1132
Completed Dozer Line	Repair Needed	repair to local unit specs	1450
Completed Dozer Line	Completed - Ready for Inspection	Consult landowner	398
Completed Dozer Line	Completed - Ready for Inspection	Remove berms and push piles, add slash over it	803
Completed Dozer Line	Completed - Ready for Inspection	repair per local specs	1540
Completed Dozer Line	Completed - Ready for Inspection	Repair per unit specs,	3530
Completed Dozer Line	Completed - Ready for Inspection	repair per local unit specs	5758
Completed Dozer Line	Completed - Inspected	repair per local unit specs	70
Completed Dozer Line	Completed - Inspected	Repair per local unit specs	218
Completed Dozer Line	Completed - Inspected	Repair per local specs	658
Completed Dozer Line	Completed - Inspected	If a closed road, remove, removed berms dozer pushes, spread slash on line	665
Completed Dozer Line	Completed - Inspected	repair per unit specs	906
Completed Dozer Line	Completed - Inspected	Remove push piles and berms, water bars as needed	1025
Completed Dozer Line	Completed - Inspected	Consult local landowner	1092
Completed Dozer Line	Completed - Inspected	Repair per local unit specs, obliterate berms and push piles, scatter slash back over line	1616



1:33,000 - 10/9/2020 2224  
Acres from GIS  
North American 1983 Datum, LatLong Grid