

Suppression Repair

Beachie Creek
ORWIF-200299
Riverside
ORMHF-000859
10/10/20
Page: 11

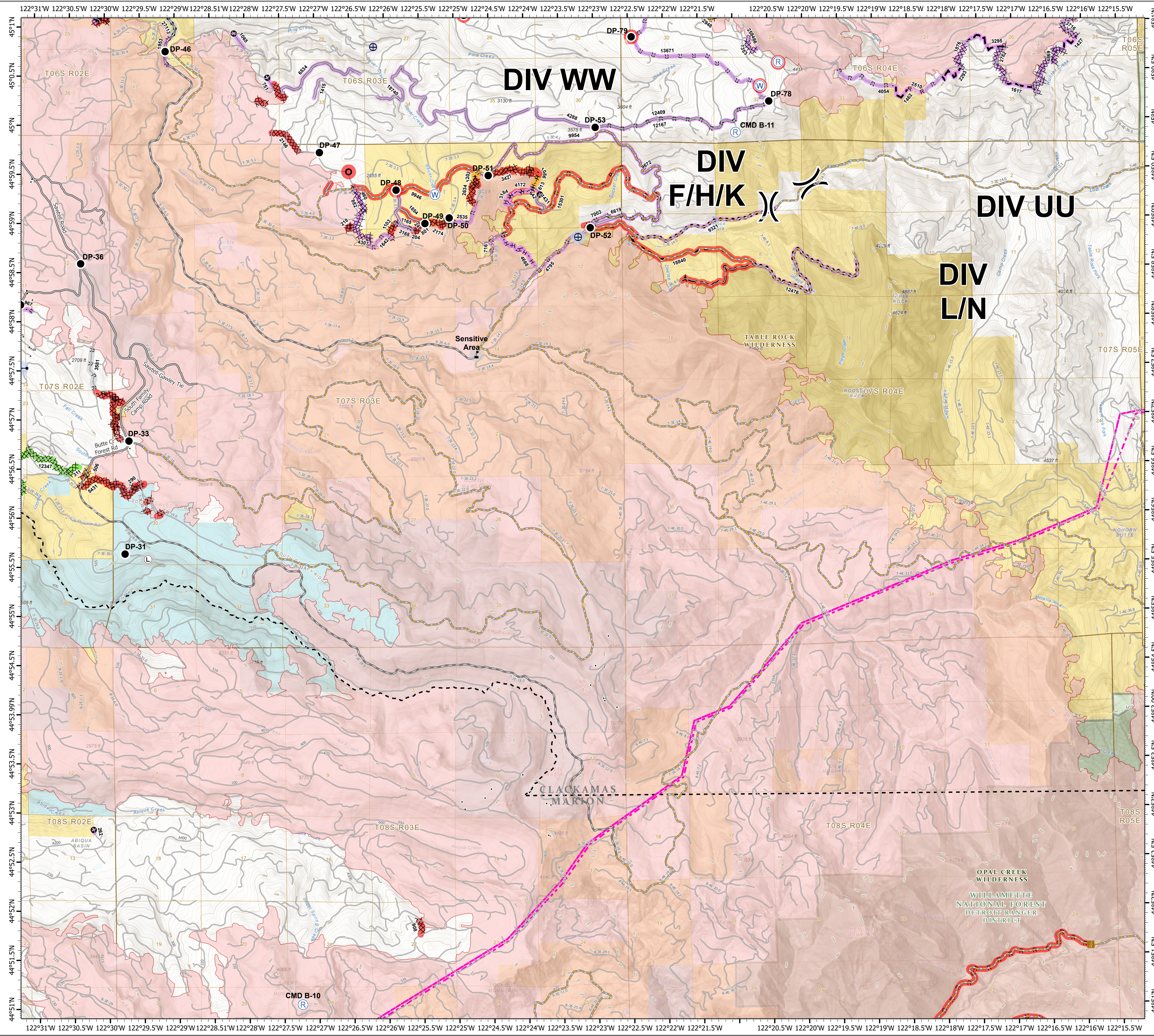
- BPA Transmission Lines
- County Boundary
- ▲ Structures
- Ranger District Boundaries
- Trailhead
- BLM Wilderness Area
- County Road
- Forest Service Wilderness Area
- Major road
- Bureau of Land Management
- Intermediate road
- U.S. Forest Service
- Minor road
- State
- Decommissioned or Closed
- Private/Unknown

FC Point Type	Repair Status	Repair Comments	Label
Culvert	Repair Needed	Trees from road clearing stacked right on top of culvert. Needs excavator to remove trees	
Drop Point	Repair Needed	Richardson- 0.25 acre of disturbed compacted bare soil. Seed, straw, cover with slash. Possible decompack with excavator if available	DP-46
Drop Point	Repair Needed		DP-79
Drop Point	Repair Needed		DP-81
Drop Point	Unknown		DP-31
Drop Point	Unknown		DP-33
Drop Point	Unknown		DP-35
Drop Point	Unknown		DP-36
Drop Point	Unknown		DP-46
Drop Point	Unknown		DP-47
Drop Point	Unknown		DP-49
Drop Point	Unknown		DP-50
Drop Point	Unknown		DP-51
Drop Point	Unknown		DP-52

FC Point Type	Repair Status	Repair Comments	Label
Drop Point	Unknown		DP-53
Drop Point	Unknown		DP-78
Gate	No Repair Needed		
Landing or Log Deck	Other - See Comments	Burn piles	
Repeater	Unknown		CHD B-10
Repeater	Unknown		CHD B-11
Repeater	Unknown		CHD R-10
Value at Risk	Other - See Comments	Sensitive Area	
Value at Risk	Repair Needed		
Water Development or Draft Site	No Repair Needed		
Water Development or Draft Site	Unknown		
Water Source	Repair Needed		
Water Source	Unknown		

FC Line Type	Repair Status	Repair Comments	Length Feet
Road as Completed Line	Unknown		716
Road as Completed Line	Unknown		1165
Road as Completed Line	Unknown		1642
Road as Completed Line	Unknown		2535
Road as Completed Line	Unknown		4795
Road as Completed Line	Unknown		4619
Road as Completed Line	Repair Needed		15391
Road as Completed Line	Other - See Comments	consult landowner	3581
Planned Secondary Line	Unknown		9321
Planned Secondary Line	Unknown		12476
Planned Fire Line	Repair Needed		5946
Planned Fire Line	Repair Needed		10940
Other	Unknown	Determine if this was put up for fire or if flagged for another non fire reason. If fire related pull flagging.	262
Other	Unknown		642
Completed Hand Line	Unknown		1086
Completed Hand Line	Unknown		3194
Completed Hand Line	Unknown		4668
Completed Hand Line	Repair Needed	repair per local unit specs	
Completed Hand Line	Repair Needed	Obliterate berm, scatter slash back over line. Marshy area	204
Completed Hand Line	Repair Needed	Needs waterbars, some steep segments, scatter slash where handline meets perennial stream, clear any debris at head of culvert at end of handline	4172
Completed Hand Line	Completed - Ready for Inspection		613
Completed Hand Line	Completed - Ready for Inspection		1203
Completed Dozer Line	Unknown	Repair per local specs, water bars, obliterate berms, scatter slash over line	460
Completed Dozer Line	Unknown		882
Completed Dozer Line	Unknown		4307
Completed Dozer Line	Repair Needed	repair per local unit specs	
Completed Dozer Line	Repair Needed	repair per local unit specs	

FC Line Type	Repair Status	Repair Comments	Length Feet
Completed Dozer Line	Repair Needed	Needs just to create water bars and access blocked.	
Completed Dozer Line	Repair Needed	Repair per local BLM specs, obliterate berms and push piles, water bar as needed, needs medium excavator with grapple claw, access through private land to south	
Completed Dozer Line	Repair Needed		
Completed Dozer Line	Repair Needed	Discuss existing road with land owner if possible.	
Completed Dozer Line	Repair Needed	consult landowner, likely needs medium excavator	
Completed Dozer Line	Repair Needed	obliterate berm, need medium excavator with grapple bucket	
Completed Dozer Line	Repair Needed	repair per local unit specs	
Completed Dozer Line	Repair Needed	Drag slash back over line	24
Completed Dozer Line	Repair Needed	consult with land owner	218
Completed Dozer Line	Repair Needed	Consult with landowner	290
Completed Dozer Line	Repair Needed	Replace logs to block access. MISCATION	311
Completed Dozer Line	Repair Needed		801
Completed Dozer Line	Repair Needed	Repair per local specs, obliterate berms and push piles, scatter slash on line, consult needs on marshy area	1103
Completed Dozer Line	Repair Needed	Dozer line needs water bars and access blocked. About 100 feet of upper line is too steep for an excavator.	2146
Completed Dozer Line	Repair Needed	Weed free much (can use vegetation nearby) conduct repair to specs of repair plan.	2174
Completed Dozer Line	Repair Needed	Repair per local specs, water bars, obliterate berms, scatter slash over line	2634
Completed Dozer Line	Repair Needed	some larger dozer pushouts, sections of berms 2-3' tall, sections of steep line will need water bars, recommend to use available slash to cover dozer line, one hand line comes off dozer line approx 500' from the end	3427
Completed Dozer Line	Repair Needed	water bars as needed, obliterate berms and dozer pushes	5431
Completed Dozer Line	Completed - Ready for Inspection	Unsure what can be done. The line follows a road line cut through a hill. Any outflow will end up in a rock quarry.	506
Completed Dozer Line	Completed - Inspected		12347
Access or Improved Road	Unknown		1431
Access or Improved Road	Unknown		3168
Access or Improved Road	Unknown		7003
Access or Improved Road	Unknown		9672
Access or Improved Road	Unknown		9954
Access or Improved Road	Repair Needed	Access needs blocked on South end. J Coebel 10/9	
Access or Improved Road	Repair Needed	Ditches need cleaned	1854



1:33,000 - 10/9/2020 2225
Acres from GIS
North American 1983 Datum, LatLong Grid