

Suppression Repair

Beachie Creek
ORWIF-200299
Riverside
ORMHF-000859
10/13/20
Page: 11

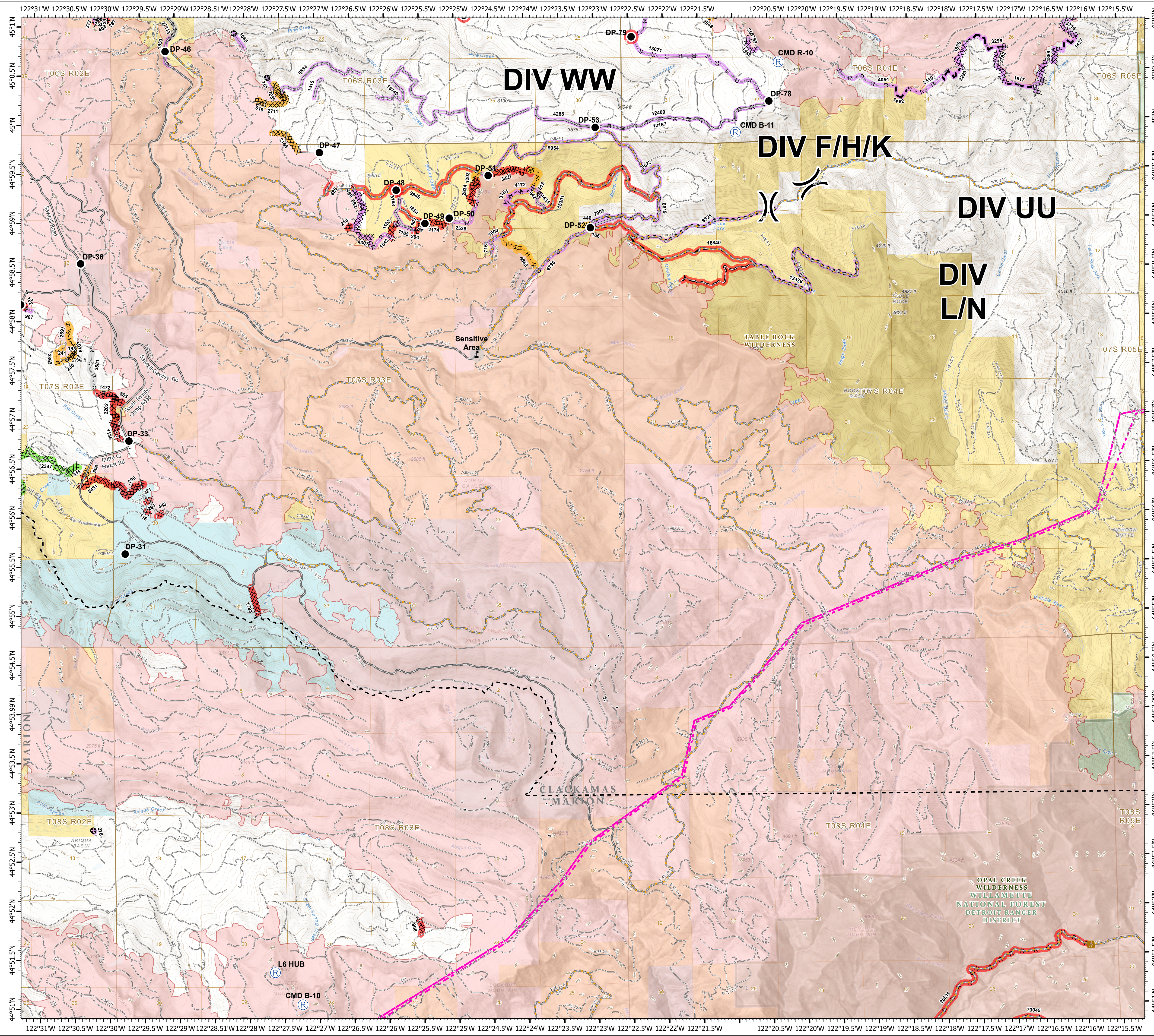
- Division Break
- Drop Point
- Repeater
- Value at Risk
- Repair Needed
- Other - See Comments
- Unknown
- Trailhead
- County Road
- Major road
- Intermediate road
- Minor road
- Decommissioned or Closed
- BPA Transmission Lines
- County Boundary
- Structures
- Completed Dozer Line
- Completed Hand Line
- Road as Completed Line
- Access or Improved Road
- Planned Fire Line
- Planned Secondary Line
- Other
- Completed - Inspected
- In Use - Fire Management
- Completed - Ready for Inspection
- Repair Needed
- Other - See Comments
- Unknown
- Wildfire Daily Fire Perimeter
- Ranger District Boundaries
- BLM Wilderness Area
- Forest Service Wilderness Area
- Bureau of Land Management
- U.S. Forest Service
- State
- Private/Unknown

FC Point Type	Repair Status	Repair Comments	Label
Drop Point	Repair Needed	Richardson- 0.25 acre of disturbed compacted bare soil. Seed, straw, cover with slash. Possible decompact with excavator if available.	DP-48
Drop Point	Repair Needed		DP-79
Drop Point	Repair Needed		DP-81
Drop Point	Unknown		DP-31
Drop Point	Unknown		DP-33
Drop Point	Unknown		DP-35
Drop Point	Unknown		DP-36
Drop Point	Unknown		DP-46
Drop Point	Unknown		DP-47
Drop Point	Unknown		DP-49

FC Point Type	Repair Status	Repair Comments	Label
Drop Point	Unknown		DP-50
Drop Point	Unknown		DP-51
Drop Point	Unknown		DP-52
Drop Point	Unknown		DP-53
Drop Point	Unknown		DP-78
Repeater	Unknown		CHD B-10
Repeater	Unknown		CHD B-11
Repeater	Unknown		CHD R-10
Repeater	Unknown		L6 HUB
Value at Risk	Other - See Comments		Sensitive Area

FC Line Type	Repair Status	Repair Comments	Length Feet
Road as Completed Line	Unknown		716
Road as Completed Line	Unknown		1000
Road as Completed Line	Unknown		1165
Road as Completed Line	Unknown		1642
Road as Completed Line	Unknown		2535
Road as Completed Line	Unknown		4795
Road as Completed Line	Unknown		6019
Road as Completed Line	Repair Needed		15391
Road as Completed Line	Other - See Comments	consult landowner	3581
Planned Secondary Line	Unknown		9321
Planned Secondary Line	Unknown		12476
Planned Fire Line	Repair Needed		5946
Planned Fire Line	Repair Needed		10949
Other	Unknown	Determine if this was put up for fire or if flagged for another non fire reason. If fire related pull flagging.	278
Other	Unknown		642
Completed Hand Line	Unknown		3184
Completed Hand Line	Repair Needed	Obturate berm, scatter slash back over line. Marshy area	204
Completed Hand Line	Repair Needed	repair per local unit specs	321
Completed Hand Line	Completed - Ready for Inspection		87
Completed Hand Line	Completed - Ready for Inspection		193
Completed Hand Line	Completed - Ready for Inspection		613
Completed Hand Line	Completed - Ready for Inspection	Repair per local specs, water bars, obliterate berms, scatter slash over line	1203
Completed Hand Line	Completed - Ready for Inspection		2691
Completed Hand Line	Completed - Ready for Inspection	Needs waterbars, some steep segments, scatter available slash, scatter slash where handline meets perennial stream, clear any ditches at risk of culvert at end of handline	4172
Completed Hand Line	Completed - Ready for Inspection		4668
Completed Dozer Line	Unknown		460
Completed Dozer Line	Unknown		882
Completed Dozer Line	Unknown		4307
Completed Dozer Line	Repair Needed	Drop slash back over line	24
Completed Dozer Line	Repair Needed	obliterate berm, need medium excavator with grapple bucket	116

FC Line Type	Repair Status	Repair Comments	Length Feet
Completed Dozer Line	Repair Needed	repair per local unit specs	116
Completed Dozer Line	Repair Needed	consult with land owner	218
Completed Dozer Line	Repair Needed	Consult with landowner	290
Completed Dozer Line	Repair Needed	repair per local unit specs	291
Completed Dozer Line	Repair Needed	Replace logs to block access. MISCATION	311
Completed Dozer Line	Repair Needed	Repair per local unit specs	443
Completed Dozer Line	Repair Needed	Repair per local specs, obliterate berms and slash piles, scatter slash back on line, consult roads on marshy area	801
Completed Dozer Line	Repair Needed		865
Completed Dozer Line	Repair Needed	Repair per local specs, obliterate berms, obliterate slash piles, scatter slash over line	1103
Completed Dozer Line	Repair Needed	Discuss existing road with land owner if possible.	1135
Completed Dozer Line	Repair Needed	consult landowner, likely needs medium excavator	1472
Completed Dozer Line	Repair Needed	Water bars don't have lead out	1793
Completed Dozer Line	Repair Needed	Weed free mulch (can use vegetation nearby) conduct repair to specs of repair plan.	2174
Completed Dozer Line	Repair Needed	Repair per local BLM specs, obliterate berms and slash piles, water bar as needed, needs medium excavator with grapple claw, access through private land to south	2202
Completed Dozer Line	Repair Needed	Repair per local specs, water bars, obliterate berms, scatter slash over line	2634
Completed Dozer Line	Repair Needed	some larger dozer patches, sections of berm 2-3' tall, sections of steep line will need water bars, recommend to use available slash to cover dozer line, one hand line comes off dozer line approx 500' from the end	3427
Completed Dozer Line	Repair Needed	water bars as needed, obliterate berms and dozer patches	5431
Completed Dozer Line	Completed - Ready for Inspection	Needs access blocked. Recommend tank trap with excavator.	446
Completed Dozer Line	Completed - Ready for Inspection	Unclear what can be done. The line follows a road bed cut through a hill. Any outflow will end up in a rock quarry.	506
Completed Dozer Line	Completed - Ready for Inspection	Dozer line needs water bars and access blocked. About 100 feet of upper line is too steep for an excavator.	1019
Completed Dozer Line	Completed - Ready for Inspection		2146
Completed Dozer Line	Completed - Inspected		12347
Access or Improved Road	Unknown		1431
Access or Improved Road	Unknown		3168
Access or Improved Road	Unknown		7802
Access or Improved Road	Unknown		9672
Access or Improved Road	Unknown		9954
Access or Improved Road	Repair Needed	Access needs blocked on South end. 3 Good 109	689
Access or Improved Road	Repair Needed	Ditches need cleaned	1854



0 0.5 1 2 Miles

1:33,000 - 10/12/2020 2039
Acres from GIS
North American 1983 Datum, LatLong Grid