

# Suppression Repair

Beachie Creek  
ORWIF-200299

Riverside  
ORMHF-000859

10/17/2020

Page: 2

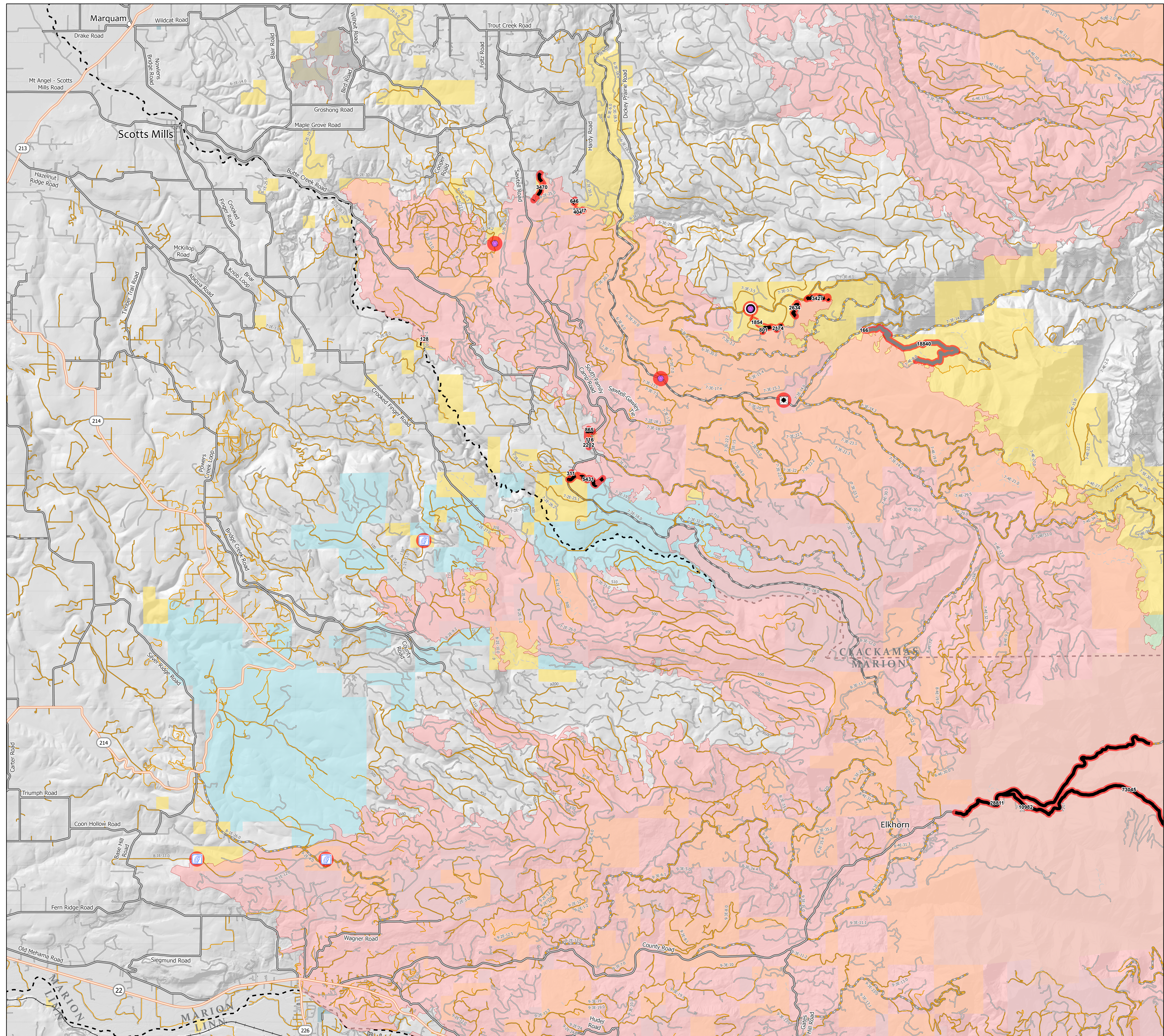
- Repair Needed
- Repair Needed
- Drop Point
- Repair Point
- ✖ Road Repair
- ✖ Stream Crossing
- Completed Hand Line
- Road as Completed Line
- Access or Improved Road
- Completed Dozer Line
- Planned Fire Line
- Wildfire Daily Fire Perimeter
- Other wildfires
- State Highway
- County Road
- Weyerhaeuser Roads
- Major road
- Intermediate road
- Minor road
- Decommissioned or Closed
- County Boundary
- Clip\_Other\_Layers\_Railroad
- City, Town, or Community
- Bureau of Land Management
- U.S. Forest Service
- Other Federal
- State
- Local Government
- Private/Unknown

## Repair points (located on BLM & USFWS) only

Incident Name	FC Point Type	Label	Comments	LND_MGR	Repair Comments
Beachie Creek	Drop Point	DP-48	Parking area	BLM	Richardson- 0.25 acre of disturbed compacted bare soil. Seed, straw, cover with slash. Possible decompact with excavator if available
Beachie Creek	Road Repair		400' section of guard rail needs replacing	BLM	
Beachie Creek	Stream Crossing		pond or stream	BLM	consult hydrologist
Beachie Creek	Stream Crossing		stream is currently draining into road	BLM	consult road engineer
Beachie Creek	Repair Point		narrow road	BLM	slash wind piled in windrows, needs to be scatter
Beachie Creek	Repair Point		Theve and Bonilla seeded 10/13; repaired	BLM	Repair at DP only. No repair needed on road. Dozer cleared potential safety zone?
Beachie Creek	Repair Point		swamp bucked logs out of ditch.	BLM	

## Repair lines (located on BLM & USFWS) only

Incident Name	FC Line Type	Label	Comments	PROPERTY STATUS	Repair Comments	Length Feet
Beachie Creek	Completed Dozer Line		BLM/ditch	BLM	Repair per local specs, needs a few water bars on slopes, obliterate berms and push piles, scatter slash on line. Consult local landowner for line off BLM land. Note: Dozer line on private ground is okay as is. No repair required. However the fence line is cut and will need repaired at the BLM/private property line. Jake Goebel E-279	3470
Beachie Creek	Planned Fire Line		Road needs to be opened a little. Some stump holes along the road. Table rock trailhead road.	BLM		18840
Beachie Creek	Completed Dozer Line		JHex REAF ARCH	BLM	Repair per local specs, water bars, obliterate berms, scatter slash over line 10/13 Theve and Garcia, repair still needed, but landing seeded	2634
Beachie Creek	Completed Dozer Line			BLM	Weed free mulch (can use vegetation nearby) conduct repair to specs of repair plan. 10/13 Theve and Garcia, needs water bars- steep and erosion occurring	2174
Beachie Creek	Completed Dozer Line			BLM	Repair per local specs, obliterate berms and push piles, scatter slash back on line, consult reads on marshy area, 10/13 Theve and Garcia still unreported	801
Beachie Creek	Completed Dozer Line			BLM	some larger dozer pushouts, sections of berms 2-3' tall, sections of steep line will need water bars, recommend to use available slash to cover dozer line, one hand line corner off dozer line approx 500' from the end, 10/13 Theve and Garcia still needs repair	3427
Beachie Creek	Completed Dozer Line			BLM	Replace logs to block access. MScanlon	311
Beachie Creek	Completed Dozer Line		BLM and state lands, repair per local unit specs, width varies	BLM	water bars as needed, obliterate berms and dozer pushes, 10/15 Theve and Garcia confirms needs work, possibly block roads, seed stream crossing	5431
Beachie Creek	Access or Improved Road			BLM	Ditches need cleaned	1854
Beachie Creek	Completed Hand Line			BLM	obliterate berms, scatter slash over line	32
Beachie Creek	Completed Hand Line		discontinues handline	BLM	obliterate berms, scatter slash over line	128
Beachie Creek	Completed Dozer Line			BLM	handcrrw obliterate berms scatter slash back on line	287
Beachie Creek	Completed Dozer Line			BLM	Light to medium excavator with grapple bucket	404
Beachie Creek	Completed Dozer Line		Dozer along unknown trail corridor, consult BLM trail read	BLM	medium excavator with grapple bucket	373
Beachie Creek	Completed Dozer Line			BLM	Light to medium excavator, remove berms and scatter slash	646
Beachie Creek	Completed Dozer Line		Single blade width, show S end as perimeter	BLM	Repair per local BLM specs, obliterate berms and push piles, water bar as needed, needs medium excavator with grapple claw, access through private land to south; 10/15 REAF- Theve and Garcia confirmed incomplete	2202
Beachie Creek	Completed Dozer Line		Dozer line to river, needs repair	BLM		166
Beachie Creek	Completed Dozer Line		Newly found	BLM		865
Beachie Creek	Completed Dozer Line		short dozerline blade wasti down	BLM	obliterate berm, need medium excavator with grapple bucket	116
Beachie Creek	Road as Completed Line	2207	Received via Shapelle from Joseph Doerr WMNF	USFS	Road as Line Needed to be Added and Repaired	73045
Beachie Creek	Road as Completed Line	2207	Received via Shapelle from Joseph Doerr WMNF	USFS	Road as Line Needed to be Added and Repaired	10982
Beachie Creek	Road as Completed Line	2209	Received via Shapelle from Joseph Doerr WMNF	USFS	Road as Line Needed to be Added and Repaired	28811



1:59,000 - 10/16/2020 2308  
North American 1983 Datum, LatLong Grid

