

Suppression Repair

Beachie Creek
ORWIF-200299

Riverside
ORMHF-000859

10/18/2020

Page: 2

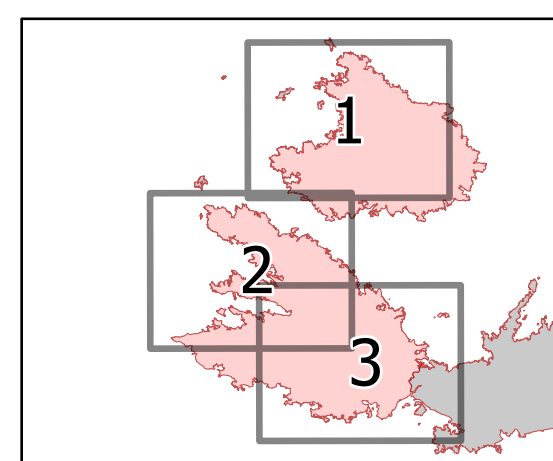
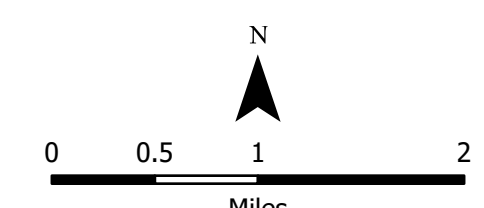
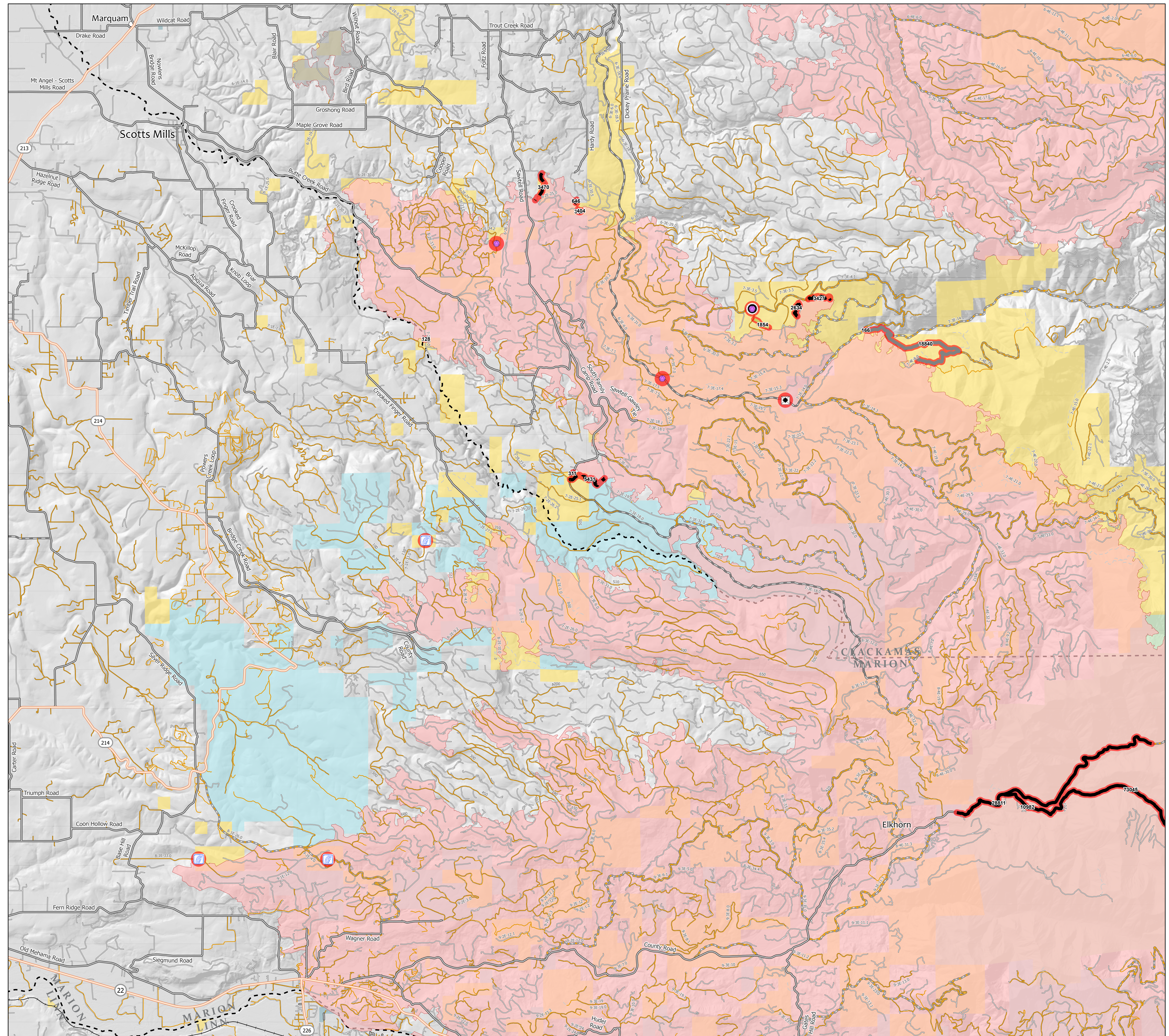
- Repair Needed
- Repair Needed
- Drop Point
- Repair Point
- ✖ Road Repair
- ✖ Stream Crossing
- Completed Hand Line
- Road as Completed Line
- Access or Improved Road
- Completed Dozer Line
- Planned Fire Line
- Wildfire Daily Fire Perimeter
- Other wildfires
- State Highway
- County Road
- Weyerhaeuser Roads
- Major road
- Intermediate road
- Minor road
- Decommissioned or Closed
- County Boundary
- Clip_Other_Layers_Railroad
- City, Town, or Community
- Bureau of Land Management
- U.S. Forest Service
- Other Federal
- State
- Local Government
- Private/Unknown

Repair points (located on BLM & USFWS) only

Incident Name	FC Point Type	Label	Comments	Repair Status	Repair Comments	LND_MGR
Beachie Creek	Drop Point	DP-48	Parking area	Repair Needed	Richardson- 0.25 acre of disturbed compacted bare soil. Seed, straw, cover with slash. Possible decompact with excavator if available	BLM
Beachie Creek	Road Repair		400' section of guard rail needs replacing	Repair Needed		BLM
Beachie Creek	Stream Crossing			Repair Needed	consult hydrologist	BLM
Beachie Creek	Stream Crossing		pond or stream	Repair Needed	consult hydrologist	BLM
Beachie Creek	Stream Crossing		stream is currently draining into road	Repair Needed	Consult road engineer	BLM
Beachie Creek	Repair Point		narrow road	Repair Needed	slash wind piled in windrows, needs to be scatter	BLM
Beachie Creek	Repair Point		Theve and Bonilla seeded 10/13; mulched 10/17, repaired	Repair Needed	Repair at DP only. No repair needed on road. Dozer cleared potential safety zone?	BLM
Beachie Creek	Repair Point		swamp bucked logs out of ditch.	Repair Needed		BLM

Repair lines (located on BLM & USFWS) only

Incident Name	FC Line Type	Comments	Repair Status	Repair Comments	LND_MGR	Length Feet
Beachie Creek	Completed Dozer Line	L.Blandchard	Repair Needed	Repair per local specs, needs a few water bars on slopes, obliterate berms and push piles, scatter slash on line. Consult local landowner for line off BLM land. Note: Dozer line on private ground is okay as is. No repair required. However the fence line is cut and will need repaired at the BLM/private property line. Jake Goebel E-279	BLM	3470
Beachie Creek	Planned Fire Line	Road needs to be opened a little. Some some stump holes along the road. Table rock trailhead road.	Repair Needed		BLM	18840
Beachie Creek	Completed Dozer Line	JNez REAF ARCH	Repair Needed	Repair per local specs, water bars, obliterate berms, scatter slash over line 10/13 Theve and Garcia, repair still needed, but landing seeded	BLM	2634
Beachie Creek	Completed Dozer Line		Repair Needed	some larger dozer pushouts, sections of berms 2-3' tall, sections of steep line will need water bars. recommend to use available slash to cover dozer line, one hand line comes off dozer line approx 500' from the end, 10/13 Theve and Garcia still needs repair	BLM	3427
Beachie Creek	Completed Dozer Line		Repair Needed	Replace logs to block access. MScanlon; 10/17 still needs blocked	BLM	311
Beachie Creek	Completed Dozer Line	BLM and state lands, repair per local unit specs. width varies	Repair Needed	water bars as needed, obliterate berms and dozer pushes; 10/15 Theve and Garcia confirms needs work, possibly block roads, seed stream crossing	BLM	5431
Beachie Creek	Access or Improved Road		Repair Needed	Ditches need cleaned	BLM	1854
Beachie Creek	Completed Hand Line		Repair Needed	obliterate berms, scatter slash over line	BLM	32
Beachie Creek	Completed Hand Line	discontinues handline	Repair Needed	obliterate berm, scatter slash over line	BLM	128
Beachie Creek	Completed Dozer Line		Repair Needed	Light to medium excavator with grapple bucket	BLM	404
Beachie Creek	Completed Dozer Line	Dozer along unknown trail corridor, consult BLM trail read	Repair Needed	medium excavator with grapple bucket	BLM	373
Beachie Creek	Completed Dozer Line		Repair Needed	Light to medium excavator, remove berms and scatter slash	BLM	646
Beachie Creek	Completed Dozer Line	Dozer line to river, needs repair	Repair Needed		BLM	166
Beachie Creek	Road as Completed Line	Received via Shappellie from Joseph Doerr WMNF	Repair Needed	Road as Line Needed to be Added and Repaired	USFS	73045
Beachie Creek	Road as Completed Line	Received via Shappellie from Joseph Doerr WMNF	Repair Needed	Road as Line Needed to be Added and Repaired	USFS	10982
Beachie Creek	Road as Completed Line	Received via Shappellie from Joseph Doerr WMNF	Repair Needed	Road as Line Needed to be Added and Repaired	USFS	28811



1:59,000 - 10/17/2020 1916
North American 1983 Datum, LatLong Grid