

Suppression Repair

Beachie Creek
ORWIF-200299

Riverside
ORMHF-000859
Beachie 1

As of 10/15/20

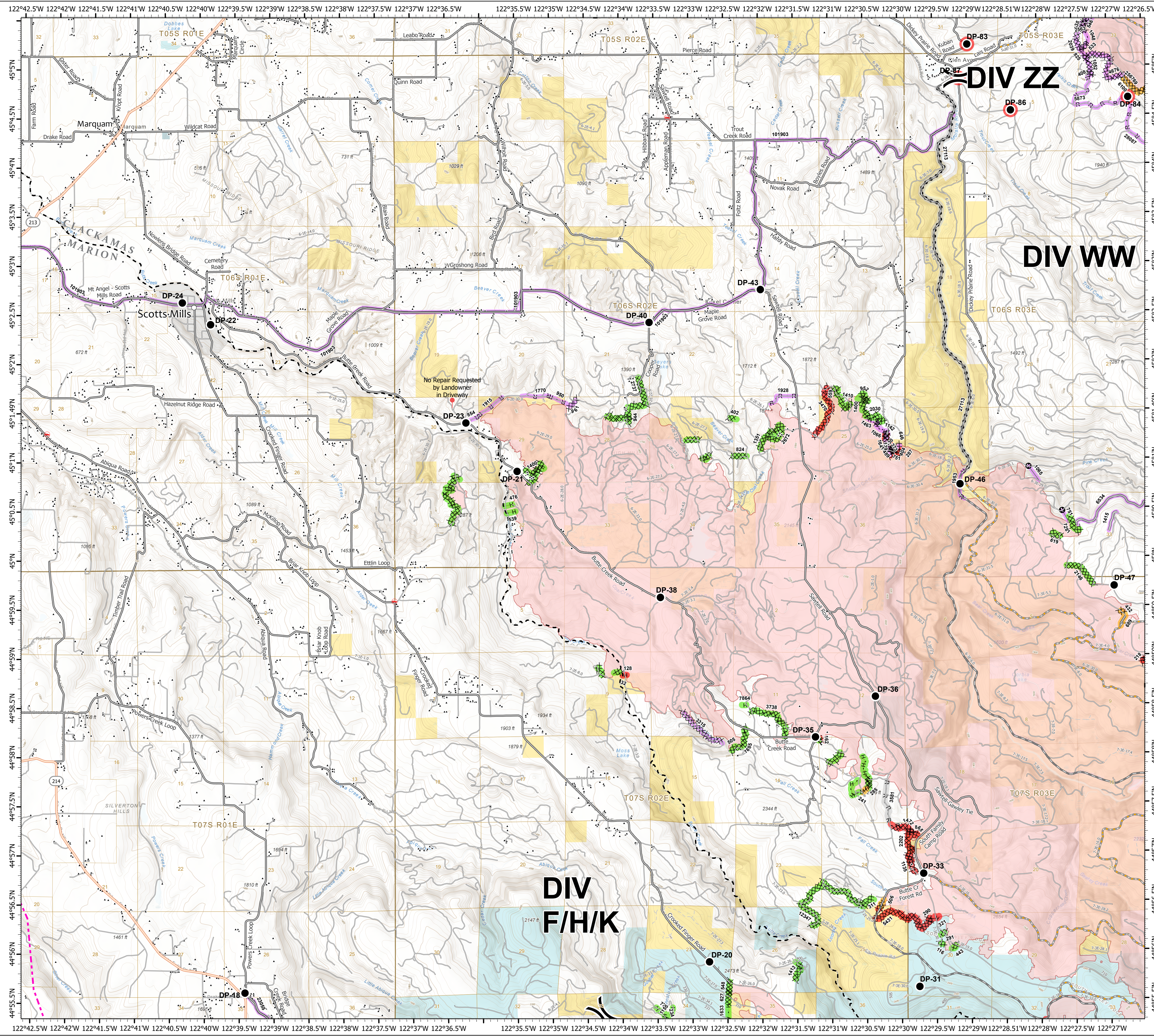
Page: 8

- Pushpin 1
- City, Town, or Community
- (Division Break
- Drop Point
- Repair Needed
- Unknown
- * Fire Station
- Label Point 2020_GISS_Edit
- State Highway
- County Road
- Major road
- Intermediate road
- Minor road
- Decommissioned or Closed
- BPA Transmission Lines
- County Boundary
- ▲ Structures
- ✖ Completed Dozer Line
- H Completed Hand Line
- * Road as Completed Line
- Access or Improved Road
- Planned Fire Line
- Planned Secondary Line
- Other
- Completed - Inspected
- In Use - Fire Management
- Completed - Ready for Inspection
- Repair Needed
- Other - See Comments
- Unknown
- Wildfire Daily Fire Perimeter
- City Limits
- Bureau of Land Management
- State
- Local Government
- Private/Unknown

FC Point Type	Repair Status	Repair Comments	Label
Drop Point	Repair Needed		DP-83
Drop Point	Repair Needed		DP-84
Drop Point	Repair Needed		DP-86
Drop Point	Repair Needed		DP-87
Drop Point	Unknown		DP-18
Drop Point	Unknown		DP-20
Drop Point	Unknown		DP-21
Drop Point	Unknown		DP-22
Drop Point	Unknown		DP-23
Drop Point	Unknown		DP-24
Drop Point	Unknown		DP-31
Drop Point	Unknown		DP-33
Drop Point	Unknown		DP-35
Drop Point	Unknown		DP-36
Drop Point	Unknown		DP-38
Drop Point	Unknown		DP-40
Drop Point	Unknown		DP-43
Drop Point	Unknown		DP-46
Drop Point	Unknown		DP-47

FC Line Type	Repair Status	Repair Comments	Length Feet
Road as Completed Line	Unknown	Consult local land owner	654
Road as Completed Line	Unknown	Consult RMADES	992
Road as Completed Line	Unknown	Consult landowner, line width varies 10-30, lots of pushed over trees	1770
Road as Completed Line	Unknown	Repair for local unit specs-BLM	1915
Road as Completed Line	Unknown		1928
Road as Completed Line	Unknown		1953
Road as Completed Line	Other - See Comments	consult landowner	3581
Road as Completed Line	Completed - Ready for Inspection	No obvious repair needed	242
Planned Secondary Line	Other - See Comments	Utilize Millava River for primary holding feature. Difficult to back off the river or road. Heliorch is suggested method. Road is in excellent condition, paved and accessible by any vehicle. Good ingress and egress.	2713
Other	Unknown		751
Other	Unknown		1065
Completed Hand Line	Unknown		1066
Completed Hand Line	Unknown		1142
Completed Hand Line	Unknown		1463
Completed Hand Line	Repair Needed	obliterate berms, scatter slash over line	32
Completed Hand Line	Repair Needed	obliterate berm, scatter slash over line	128
Completed Hand Line	Completed - Ready for Inspection		285
Completed Hand Line	Completed - Inspected	Water bars installed	
Completed Hand Line	Completed - Inspected		
Completed Hand Line	Completed - Inspected		
Completed Hand Line	Completed - Inspected		
Completed Hand Line	Completed - Inspected	His water bars	476
Completed Hand Line	Completed - Inspected	Water bars installed	476
Completed Hand Line	Completed - Inspected	Water bars installed	539
Completed Hand Line	Completed - Inspected	I pulled the flagging used to mark the trail. I left two pieces to mark the beginning of the trail. (Pulled flagging,) (Goebel, no repair needed)	7864
Completed Dozer Line	Unknown	medium excavator with grapple bucket	373
Completed Dozer Line	Unknown	Consult local land owner, has berm from dozer push, some pushed over trees	961
Completed Dozer Line	Unknown		1641
Completed Dozer Line	Unknown		3315
Completed Dozer Line	Repair Needed	obliterate berm, need medium excavator with grapple bucket	116
Completed Dozer Line	Repair Needed	handcrew repair obliterate berms scatter slash back over line	130
Completed Dozer Line	Repair Needed	obliterate berms scatter slash back overline	139
Completed Dozer Line	Repair Needed		162
Completed Dozer Line	Repair Needed	handcrew obliterate berms scatter slash back on line	287
Completed Dozer Line	Repair Needed	Light to medium excavator with grapple bucket	404
Completed Dozer Line	Repair Needed	Berms obliterated, slash scattered, minimal trail repair needed	489
Completed Dozer Line	Repair Needed	Light to medium excavator, remove berms and scatter slash	646
Completed Dozer Line	Repair Needed	Excavator needed, obliterate berms and scatter slash water bars as repair plan. Water bar on dozer line just above trail. Step down drain construction of rock across trail where water bar drains. Retaining curb constructed of rock on lower side of trail adjacent to dozer intersection. Scatter slash heavily across beginning of dozer line above trail.	751
Completed Dozer Line	Repair Needed		865

FC Line Type	Repair Status	Repair Comments	Length Feet
Completed Dozer Line	Repair Needed	Discuss existing road with land owner if possible.	1135
Completed Dozer Line	Repair Needed	consult landowner, likely needs medium excavator	1472
Completed Dozer Line	Repair Needed	Repair per local BLM specs, obliterate berms and push piles, water bar as needed, needs medium excavator with grapple claw, access through private land to south	2202
Completed Dozer Line	Repair Needed	Repair per local specs, needs a few water bars on slopes, obliterate berms and push piles, scatter slash on line. Consult local landowner for line off BLM land. Note: Dozer line on private ground is okay as is. No repair required. However the fence line is out and will need repaired at the BLM/private property line. Jake Goebel E-279	3470
Completed Dozer Line	Completed - Inspected	Water bars installed and berms were knocked down.	
Completed Dozer Line	Completed - Inspected	Water bars installed	
Completed Dozer Line	Completed - Inspected	Water bars added	
Completed Dozer Line	Completed - Inspected	Water bars added	
Completed Dozer Line	Completed - Inspected	Water bars installed	
Completed Dozer Line	Completed - Inspected	Water bars installed.	
Completed Dozer Line	Completed - Inspected	Needs a few water bars	
Completed Dozer Line	Completed - Inspected	Generally flat	
Completed Dozer Line	Completed - Inspected	Flat. Dirt from ditch was removed.	
Completed Dozer Line	Completed - Inspected	Water bars installed.	
Completed Dozer Line	Completed - Inspected	Water bars installed.	
Completed Dozer Line	Completed - Inspected	Water bars added	
Completed Dozer Line	Completed - Inspected	Water bars added	
Completed Dozer Line	Completed - Inspected	Dozer line has been repaired and blocked by an excavator.	402
Completed Dozer Line	Completed - Inspected	Water bars installed	505
Completed Dozer Line	Completed - Inspected	Dozer line has been water bared.	559
Completed Dozer Line	Completed - Inspected	Water bars installed	619
Completed Dozer Line	Completed - Inspected	Both ends of line have been blocked to travel. No additional repair needed. No water bars required due to lines gentle/ flat slope.	824
Completed Dozer Line	Completed - Inspected	No water bars needed	944
Completed Dozer Line	Completed - Inspected	Adequate water bars	952
Completed Dozer Line	Completed - Inspected	Water bars installed	1281
Completed Dozer Line	Completed - Inspected	Water bars installed	1351
Completed Dozer Line	Completed - Inspected	Water bars installed up drainage	1400
Completed Dozer Line	Completed - Inspected	Completed dozer line with water bars no more repair needed	1400
Completed Dozer Line	Completed - Inspected		1410
Completed Dozer Line	Completed - Inspected	Water bars installed	1685
Completed Dozer Line	Completed - Inspected	Flat dozer line. No repair needed.	2030
Completed Dozer Line	Completed - Inspected	Water bars installed	2146
Completed Dozer Line	Completed - Inspected	Water bars added no additional work needed	2672
Completed Dozer Line	Completed - Inspected	Water bar by hand crew only. North south line is typo	2737
Completed Dozer Line	Completed - Inspected	May have been constructed by local volunteers (Flat, no water bars required) (Goebel)	3738
Completed Dozer Line	Completed - Inspected	Portions of this route may have been existing ATJ trail. Consult land owner. Needs water bars.	3738
Completed Dozer Line	Completed - Inspected		12347
Access or Improved Road	Unknown		6534
Access or Improved Road	Unknown		101903



0 0.5 1 2
Miles

N

1:33,000 - 10/14/2020 2339

North American 1983 Datum, Lat/Long Grid