

Division Break

- Minor road
- Decommissioned or Closed
- BPA Transmission Lines
- County Boundary
- Structures
- Completed Dozer Line
- Completed Hand Line
- Road as Completed Line
- Access or Improved Road
- Line Break Completed
- Other

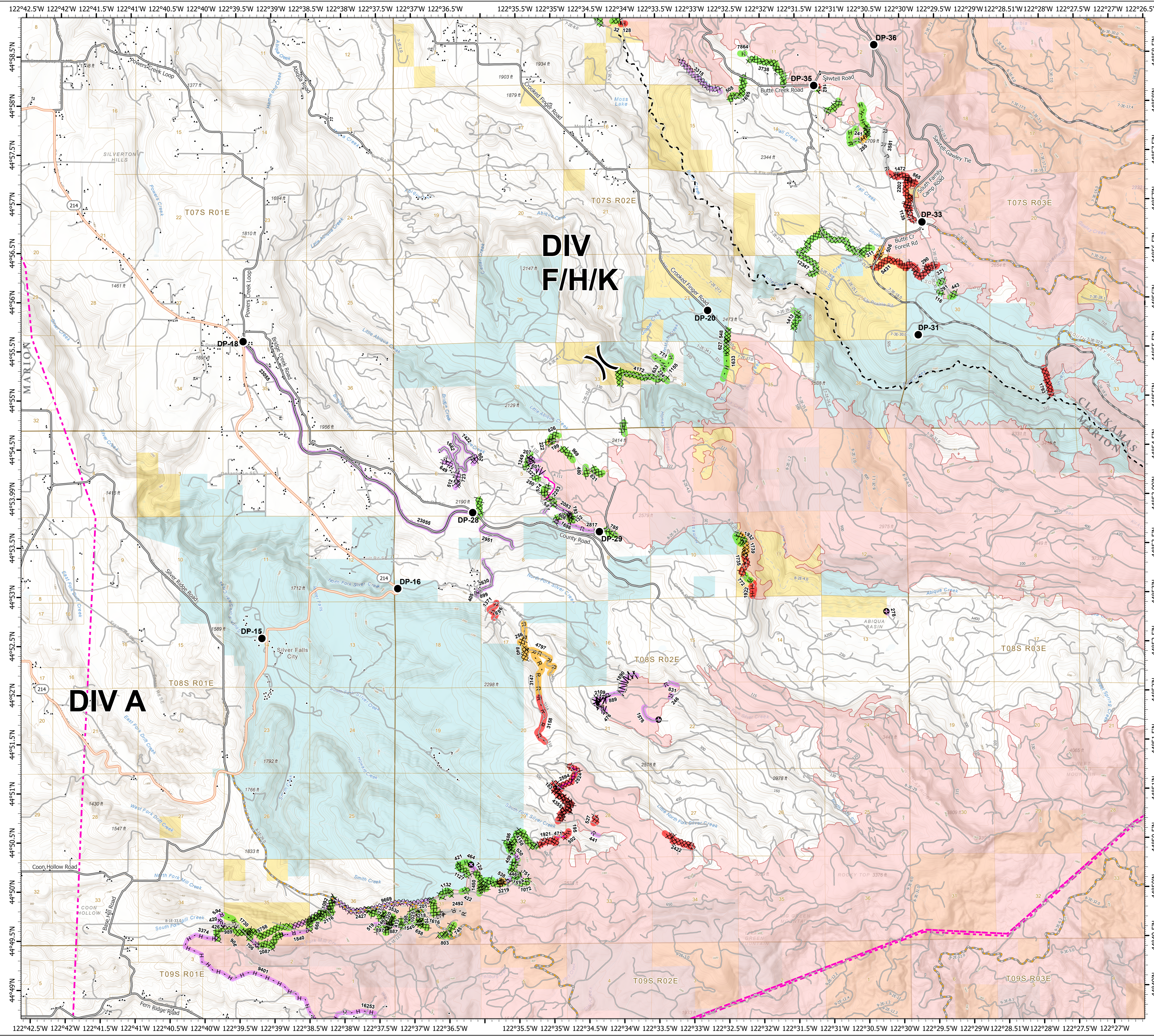
Unknown

- Completed - Inspected
- In Use - Fire Management
- Completed - Ready for Inspection
- Repair Needed
- Other - See Comments
- Unknown
- Wildfire Daily Fire Perimeter
- Bureau of Land Management
- State
- Private/Unknown

FC Point Type	Repair Status	Repair Comments	Label
Drop Point	Unknown		DP-15
Drop Point	Unknown		DP-16
Drop Point	Unknown		DP-18
Drop Point	Unknown		DP-20
Drop Point	Unknown		DP-28
Drop Point	Unknown		DP-29
Drop Point	Unknown		DP-31
Drop Point	Unknown		DP-33
Drop Point	Unknown		DP-35
Drop Point	Unknown		DP-36

FC Line Type	Repair Status	Repair Comments	Length Feet
Line	In Use - Fire Management		471
Unknown	In Use - Fire Management		2383
Unknown	In Use - Fire Management		2524
Road as Completed Line	Unknown		183
Road as Completed Line	Unknown		246
Road as Completed Line	Unknown		246
Road as Completed Line	Unknown		441
Road as Completed Line	Unknown		446
Road as Completed Line	Unknown		530
Road as Completed Line	Unknown		601
Road as Completed Line	Unknown		606
Road as Completed Line	Unknown		751
Road as Completed Line	Unknown		831
Road as Completed Line	Unknown		889
Road as Completed Line	Unknown		899
Road as Completed Line	Unknown		899
Road as Completed Line	Unknown		2817
Road as Completed Line	Repair Needed	Created some roadside berms	686
Road as Completed Line	Repair Needed	Open berms on downhill side to allow drainage	1371
Road as Completed Line	Repair Needed	Created some roadside berms, pre-existing drainage issues	3158
Road as Completed Line	Other - See Comments	consult landowner	3581
Road as Completed Line	Completed - Ready for Inspection		199
Road as Completed Line	Completed - Ready for Inspection	Water crossings should be repaired	3147
Road as Completed Line	Completed - Ready for Inspection	Some erosion problems at the S end. The road looks good except for water crossing	4797
Road as Completed Line	Completed - Inspected	Pull flagging only needed	772
Other	Unknown	Determine if this was put up for fire or if flagged for another non fire reason. If fire related pull flagging.	278
Other	Unknown	consult local unit	720
Other	Unknown		1578
Other	Unknown		1578
Line Break Completed	Unknown		476
Line Break Completed	Unknown		476
Line Break Completed	Unknown		1332
Line Break Completed	Unknown		1890
Line Break Completed	Unknown		1920
Line Break Completed	Unknown		2109
Line Break Completed	Unknown		2109
Completed Hand Line	Unknown		207
Completed Hand Line	Unknown		405
Completed Hand Line	Repair Needed	Construct water bars and cover with slash in accordance with suppression repair plan	195
Completed Hand Line	Repair Needed	repair per local unit specs	321
Completed Hand Line	Repair Needed	Handline along edge of burn. Needs repair. Pull flagging pull in berm, brush and water bars needed on the steep sloped sections of line.	1922
Completed Hand Line	Completed - Inspected	Water bars installed.	234
Completed Hand Line	Completed - Inspected	repair per local unit specs	464
Completed Hand Line	Completed - Inspected	Water bars installed.	633
Completed Hand Line	Completed - Inspected	Water bars installed.	771
Completed Hand Line	Completed - Inspected	Water bars installed.	1155
Completed Hand Line	Completed - Inspected	Water bars installed.	1623
Completed Hand Line	Completed - Inspected	Completed to specs	1932
Completed Dozer Line	Unknown		512
Completed Dozer Line	Unknown		649
Completed Dozer Line	Unknown		723
Completed Dozer Line	Unknown		902
Completed Dozer Line	Repair Needed	obliterate berm, need medium excavator with grapple bucket	116
Completed Dozer Line	Repair Needed	Consult with landowner	290
Completed Dozer Line	Repair Needed	Remove logs to break access. MScarson	311
Completed Dozer Line	Repair Needed	Construct water bars and/or ditches in accordance with suppression repair plan	502

FC Line Type	Repair Status	Repair Comments	Length Feet
Completed Dozer Line	Repair Needed	Construct water bars, pull back berm. Consult private land owner	527
Completed Dozer Line	Repair Needed		865
Completed Dozer Line	Repair Needed	Discuss existing road with land owner if possible.	1135
Completed Dozer Line	Repair Needed	Water bars don't have lead out	1472
Completed Dozer Line	Repair Needed	road to specs. Pull flagging	1735
Completed Dozer Line	Repair Needed	Water bars don't have lead out	1793
Completed Dozer Line	Repair Needed	Repair per local BLU specs, obliterate berms and push piles, water bar as needed, needs medium excavator with grapple claw, access through private land to south	2202
Completed Dozer Line	Repair Needed		2422
Completed Dozer Line	Repair Needed		2594
Completed Dozer Line	Repair Needed	Some boggy areas with a dozer trench.	4355
Completed Dozer Line	Repair Needed	Some boggy areas with a dozer trench.	4355
Completed Dozer Line	Repair Needed	water bars as needed, obliterate berms and dozer pushes	5431
Completed Dozer Line	Completed - Ready for Inspection		256
Completed Dozer Line	Completed - Ready for Inspection		756
Completed Dozer Line	Completed - Ready for Inspection	Shows what can be done. The line follows a road bed cut through a hill. Any outflow will end up in a rock quarry.	506
Completed Dozer Line	Completed - Ready for Inspection	Pull berm back. Pull slash across	538
Completed Dozer Line	Completed - Ready for Inspection	Open downhill berms where possible	840
Completed Dozer Line	Completed - Ready for Inspection	new on old road bed, scarify slash back on line, will need excavator with grapple bucket	1739
Completed Dozer Line	Completed - Inspected		250
Completed Dozer Line	Completed - Inspected	Water bars installed.	291
Completed Dozer Line	Completed - Inspected	Repair per local unit specs	422
Completed Dozer Line	Completed - Inspected	Repair per local unit specs	443
Completed Dozer Line	Completed - Inspected		459
Completed Dozer Line	Completed - Inspected		480
Completed Dozer Line	Completed - Inspected	Water bars installed and access blocked.	548
Completed Dozer Line	Completed - Inspected		551
Completed Dozer Line	Completed - Inspected	Water bars needed.	574
Completed Dozer Line	Completed - Inspected	Water bars installed.	637
Completed Dozer Line	Completed - Inspected		785
Completed Dozer Line	Completed - Inspected		826
Completed Dozer Line	Completed - Inspected		851
Completed Dozer Line	Completed - Inspected		909
Completed Dozer Line	Completed - Inspected	Pull back berm, construct water bars and/or ditches in accordance with suppression repair plan.	1072
Completed Dozer Line	Completed - Inspected	repair per local unit specs	1127
Completed Dozer Line	Completed - Inspected	obliterate berm and push piles, pull slash over line, no need for water bars	1132
Completed Dozer Line	Completed - Inspected	Water bars installed and access blocked.	1249
Completed Dozer Line	Completed - Inspected	repair to local unit specs	1413
Completed Dozer Line	Completed - Inspected		1450
Completed Dozer Line	Completed - Inspected		1584
Completed Dozer Line	Completed - Inspected		1666
Completed Dozer Line	Completed - Inspected	Consult landowner	3219
Completed Dozer Line	Completed - Inspected	Constructed with excavator, big cuts and some wet areas.	4158
Completed Dozer Line	Completed - Inspected	Install additional water bars. Could be done with dozer	4172
Completed Dozer Line	Completed - Inspected		12347
Access or Improved Road	Unknown		3662
Access or Improved Road	Unknown		2083



0 0.5 1 2 Miles

Northwest Incident Management Team

1:33,000 - 10/14/2020 2340

North American 1983 Datum, Lat/Long Grid