

Suppression Repair

Beachie Creek
ORWIF-200299

Riverside
ORMHF-000859
Beachie 4

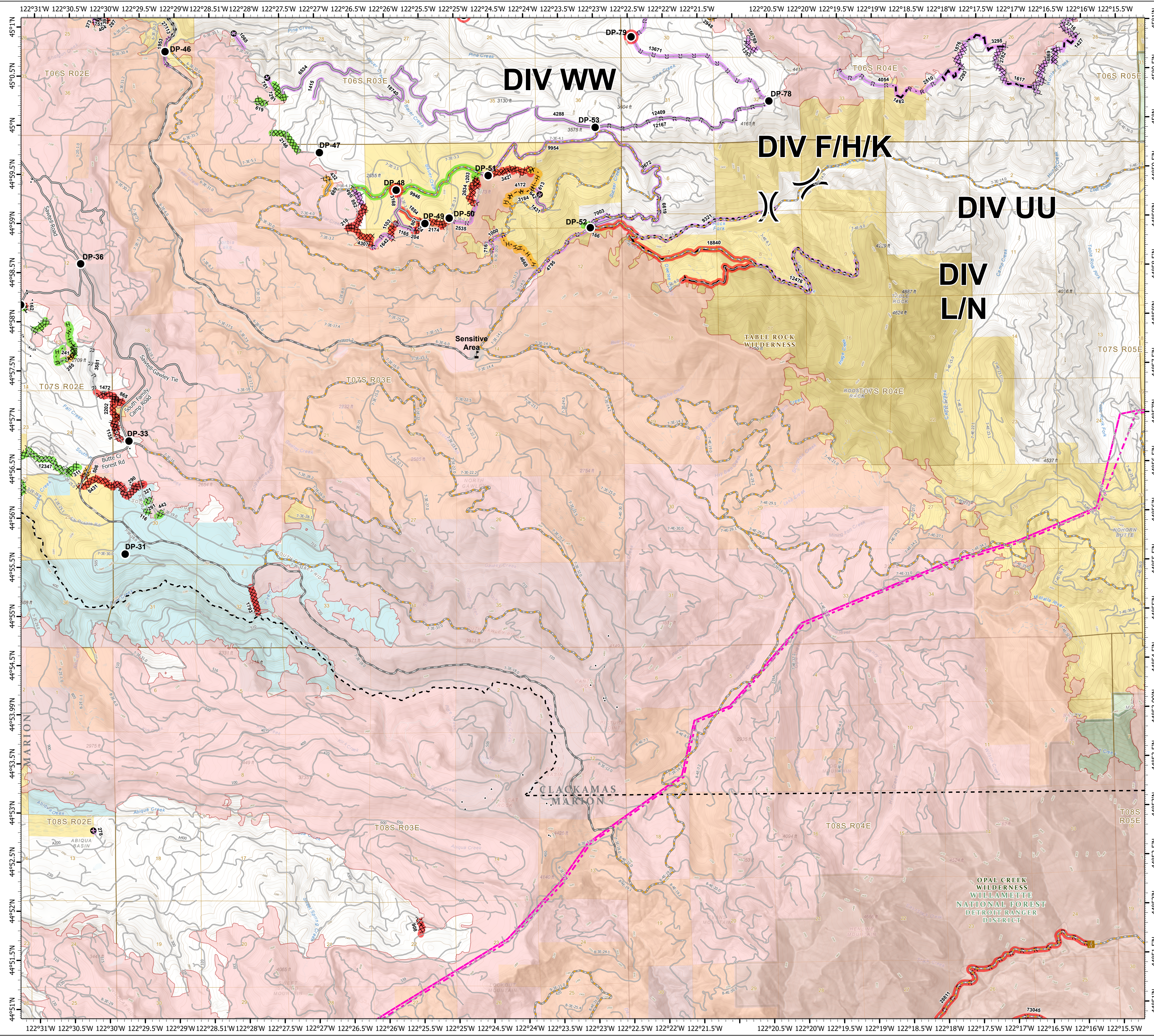
As of 10/15/20
Page: 11

	Division Break		Major road		Completed - Inspected
	Drop Point		Intermediate road		In Use - Fire Management
	Value at Risk		Minor road		Completed - Ready for Inspection
	Repair Needed		Decommissioned or Closed		Repair Needed
	Other - See Comments		BPA Transmission Lines		Other - See Comments
	Unknown		County Boundary		Unknown
	Trailhead		Structures		Wildfire Daily Fire Perimeter
	Label Point 2020_GISS_Edit		Ranger District Boundaries		BLM Wilderness Area
	County Road		Completed Dozer Line		Forest Service Wilderness Area
			Road as Completed Line		Access or Improved Road
			Planned Fire Line		Planned Fire Line
			Planned Secondary Line		Planned Secondary Line
			Other		Other

FC Point Type	Repair Status	Repair Comments	Label
Drop Point	Repair Needed	Richardson- 0.25 acre of disturbed compacted bare soil. Seed, straw, cover with slash. Possible decompact with excavator if available	DP-48
Drop Point	Repair Needed		DP-79
Drop Point	Unknown		DP-81
Drop Point	Unknown		DP-31
Drop Point	Unknown		DP-33
Drop Point	Unknown		DP-35
Drop Point	Unknown		DP-36
Drop Point	Unknown		DP-46
Drop Point	Unknown		DP-47
Drop Point	Unknown		DP-49
Drop Point	Unknown		DP-50
Drop Point	Unknown		DP-51
Drop Point	Unknown		DP-52
Drop Point	Unknown		DP-53
Drop Point	Unknown		DP-78
Value at Risk	Other - See Comments		Sensitive Area

FC Line Type	Repair Status	Repair Comments	Length Feet
Road as Completed Line	Unknown		716
Road as Completed Line	Unknown		1000
Road as Completed Line	Unknown		1165
Road as Completed Line	Unknown		1642
Road as Completed Line	Unknown		2535
Road as Completed Line	Unknown		4795
Road as Completed Line	Unknown		6019
Road as Completed Line	Other - See Comments	consult landowner	3581
Planned Secondary Line	Unknown		9321
Planned Secondary Line	Unknown		12476
Planned Fire Line	Repair Needed		18940
Planned Fire Line	Completed - Inspected		9946
Other	Unknown	Determine if this was put up for fire or if flagged for another non fire reason. If fire resist pull flagging	278
Other	Unknown		642
Completed Hand Line	Repair Needed	Obilitate berm, scatter slash back over line. Hasty area	204
Completed Hand Line	Repair Needed	repair per local unit specs	321
Completed Hand Line	Completed - Ready for Inspection		613
Completed Hand Line	Completed - Ready for Inspection		3184
Completed Hand Line	Completed - Ready for Inspection	Needs waterbars, some steep segments, scatter available slash, scatter slash where handline meets perennial stream, clear any debris at inlet of culvert at end of handline	4172
Completed Hand Line	Completed - Ready for Inspection		4668
Completed Hand Line	Completed - Inspected		642
Completed Hand Line	Completed - Inspected		291
Completed Hand Line	Completed - Inspected		443
Completed Hand Line	Completed - Inspected		1203
Completed Dozer Line	Unknown		460
Completed Dozer Line	Unknown		882
Completed Dozer Line	Repair Needed	Drag slash back over line	24
Completed Dozer Line	Repair Needed	obilitate berm, need medium excavator with grapple bucket	116
Completed Dozer Line	Repair Needed		166
Completed Dozer Line	Repair Needed	consult with land owner	218

FC Line Type	Repair Status	Repair Comments	Length Feet
Completed Dozer Line	Repair Needed	Consult with landowner	290
Completed Dozer Line	Repair Needed	Remove logs to block access. M5canon	311
Completed Dozer Line	Repair Needed	Repair per local specs, obilitate berm and push piles, scatter slash back on line, consult reeds on nearby area; 10/13 There and Garcia still unpaired	801
Completed Dozer Line	Repair Needed	Repair per local specs, obilitate berm, obilitate push piles, scatter slash over line, holding water 10/13. There, repair still needed	865
Completed Dozer Line	Repair Needed	Repair per local specs, obilitate berm, obilitate push piles, scatter slash over line, holding water 10/13. There, repair still needed	1103
Completed Dozer Line	Repair Needed	Discuss existing road with land owner if possible.	1135
Completed Dozer Line	Repair Needed	consult landowner, likely needs medium excavator	1472
Completed Dozer Line	Repair Needed	Water bars don't have lead out	1793
Completed Dozer Line	Repair Needed	Weed free mulch (can use vegetation nearby) conduct repair to specs of repair plan, 10/13 There and Garcia, needs water bars- steep and erosion occurring	2174
Completed Dozer Line	Repair Needed	Repair per local BLM specs obilitate berm and push piles, water bar as needed, needs medium excavator with grapple claw, access through private land to south	2202
Completed Dozer Line	Repair Needed	Repair per local specs, water bars, obilitate berm, scatter slash over line 10/13 There and Garcia, repair still needed, but landing needed	2634
Completed Dozer Line	Repair Needed	some larger dozer pushouts, sections of berm 2-3' tall, sections of steep line will need water bars, recommended to use available slash to cover dozer line, one hand line comes off dozer line approx 500' from the end, 10/13 There and Garcia still needs repair	3427
Completed Dozer Line	Repair Needed	put slash and water bar to BLM specs, There and Garcia 10/13	4307
Completed Dozer Line	Repair Needed	water bars as needed, obilitate berm and dozer pushouts	5431
Completed Dozer Line	Completed - Ready for Inspection	No repair required, J Goebel 10/9	432
Completed Dozer Line	Completed - Ready for Inspection	Unsure what can be done. The line follows a road bed cut through a hill. Any outflow will end up in a rock quarry.	506
Completed Dozer Line	Completed - Inspected	Bank eroded and water barred.	
Completed Dozer Line	Completed - Inspected	Needs a few water bars	
Completed Dozer Line	Completed - Inspected	Water bars installed	116
Completed Dozer Line	Completed - Inspected	Water bars installed.	291
Completed Dozer Line	Completed - Inspected	Repair per local unit specs	443
Completed Dozer Line	Completed - Inspected	Water bars installed	2146
Completed Dozer Line	Completed - Inspected		12347
Access or Improved Road	Unknown		1431
Access or Improved Road	Unknown		3168
Access or Improved Road	Unknown		7003
Access or Improved Road	Unknown		9672
Access or Improved Road	Unknown		9954
Access or Improved Road	Repair Needed	Ditches need cleaned	1854
Access or Improved Road	Completed - Ready for Inspection	Access needs blocked on South end, J Goebel 10/9	689



0 0.5 1 2 Miles

1:33,000 - 10/14/2020 2343

North American 1983 Datum, Lat/Long Grid

