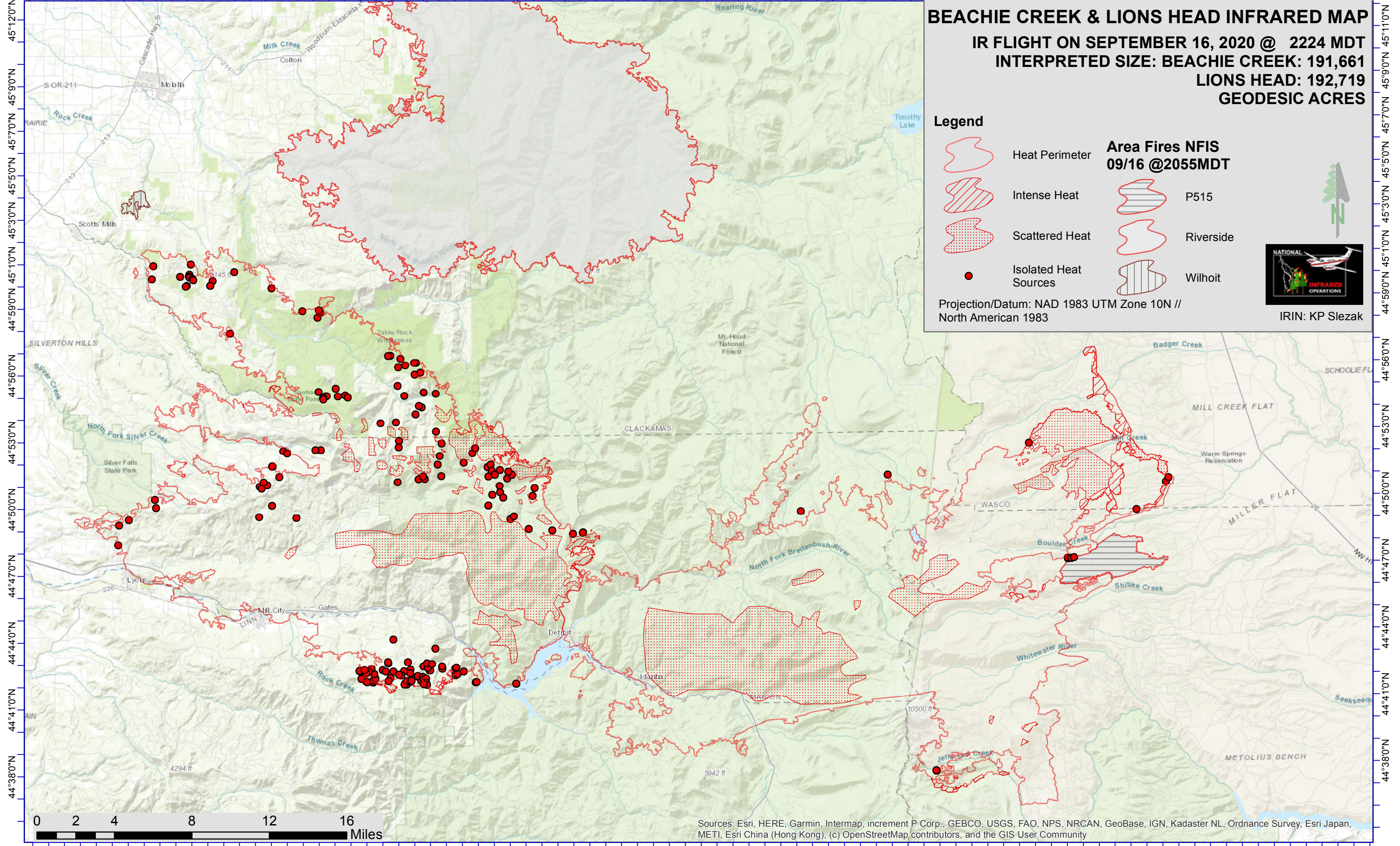


122°42'0"W 122°38'0"W 122°34'0"W 122°30'0"W 122°26'0"W 122°22'0"W 122°18'0"W 122°14'0"W 122°10'0"W 122°6'0"W 122°2'0"W 121°58'0"W 121°54'0"W 121°50'0"W 121°46'0"W 121°42'0"W 121°38'0"W 121°34'0"W 121°30'0"W 121°26'0"W 121°22'0"W 121°18'0"W



**BEACHIE CREEK & LIONS HEAD INFRARED MAP**  
**IR FLIGHT ON SEPTEMBER 16, 2020 @ 2224 MDT**  
**INTERPRETED SIZE: BEACHIE CREEK: 191,661**  
**LIONS HEAD: 192,719**  
**GEODESIC ACRES**

**Legend**

- Heat Perimeter
- Intense Heat
- Scattered Heat
- Isolated Heat Sources

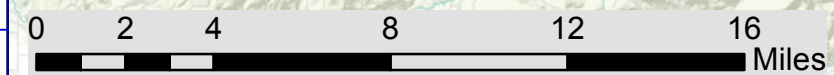
**Area Fires NFIS 09/16 @2055MDT**

- P515
- Riverside
- Wilhoit

Projection/Datum: NAD 1983 UTM Zone 10N // North American 1983

IRIN: KP Slezak

122°43'0"W 122°39'0"W 122°35'0"W 122°31'0"W 122°27'0"W 122°23'0"W 122°19'0"W 122°15'0"W 122°11'0"W 122°7'0"W 122°3'0"W 121°59'0"W 121°55'0"W 121°51'0"W 121°47'0"W 121°43'0"W 121°39'0"W 121°35'0"W 121°31'0"W 121°27'0"W 121°23'0"W 121°19'0"W



Sources: Esri, HERE, Garmin, Intermap, increment P Corp., GEBCO, USGS, FAO, NPS, NRCAN, GeoBase, IGN, Kadaster NL, Ordnance Survey, Esri Japan, METI, Esri China (Hong Kong), (c) OpenStreetMap contributors, and the GIS User Community