

120°39'0"W 120°38'0"W 120°37'0"W 120°36'0"W 120°35'0"W 120°34'0"W 120°33'0"W 120°32'0"W 120°31'0"W 120°30'0"W 120°29'0"W 120°28'0"W 120°27'0"W

Brattain Fire Infrared Map
Imagery Flown 9/16/2020 at 1859 PDT
Calculated Acres 43,493
IRIN M McGann



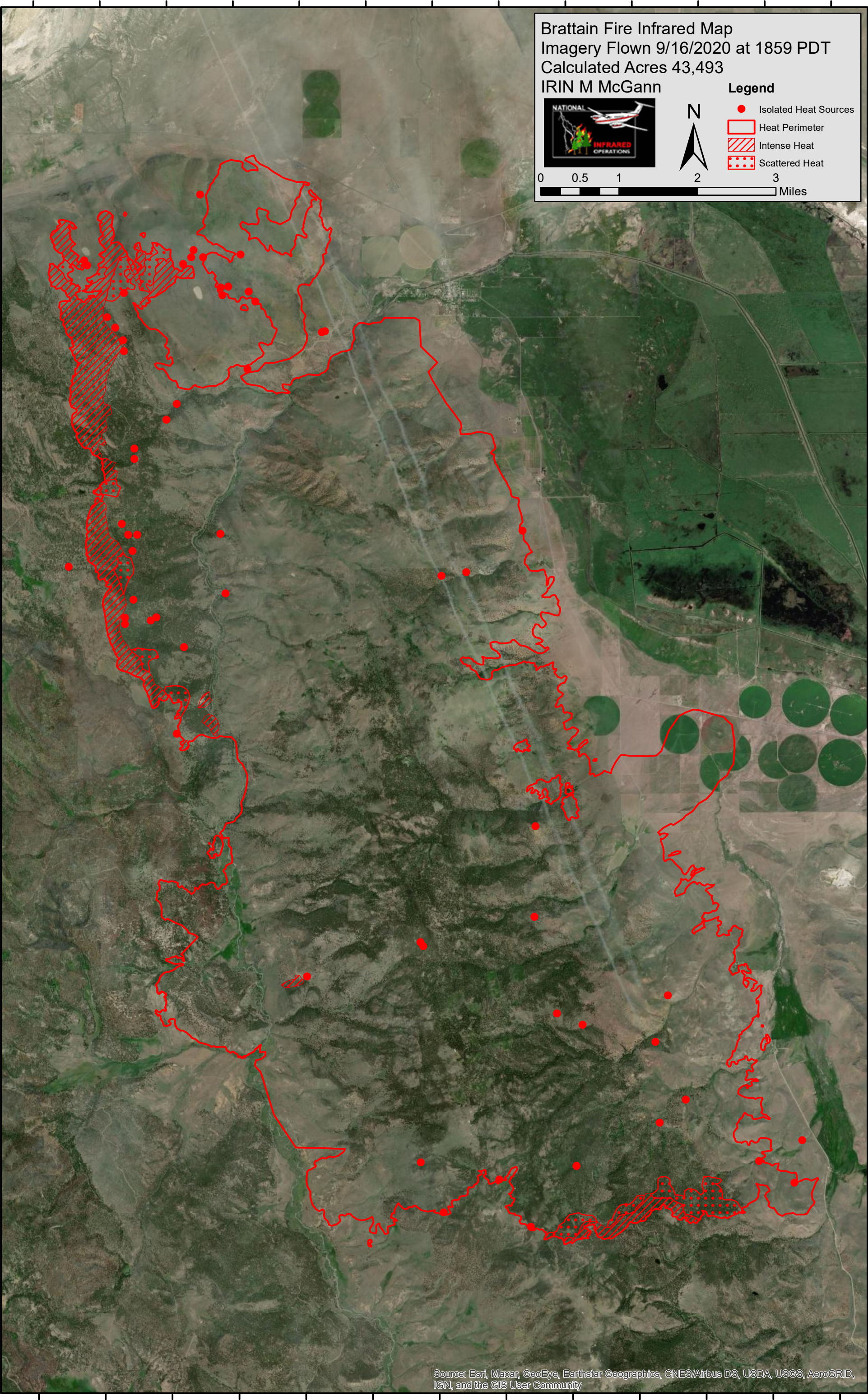
Legend

- Isolated Heat Sources
- Heat Perimeter
- Intense Heat
- Scattered Heat

0 0.5 1 2 3 Miles

42°44'0"N
42°43'0"N
42°42'0"N
42°41'0"N
42°40'0"N
42°39'0"N
42°38'0"N
42°37'0"N
42°36'0"N
42°35'0"N
42°34'0"N
42°33'0"N
42°32'0"N
42°31'0"N
42°30'0"N

42°44'0"N
42°43'0"N
42°42'0"N
42°41'0"N
42°40'0"N
42°39'0"N
42°38'0"N
42°37'0"N
42°36'0"N
42°35'0"N
42°34'0"N
42°33'0"N
42°32'0"N
42°31'0"N
42°30'0"N



Source: Esri, Maxar, GeoEye, Earthstar Geographics, CNES/Airbus DS, USDA, USGS, AeroGRID, IGN, and the GIS User Community

120°39'0"W 120°38'0"W 120°37'0"W 120°36'0"W 120°35'0"W 120°34'0"W 120°33'0"W 120°32'0"W 120°31'0"W 120°30'0"W 120°29'0"W 120°28'0"W 120°27'0"W