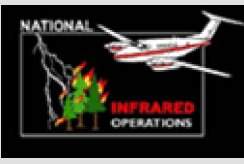


120°43'0"W 120°42'0"W 120°41'0"W 120°40'0"W 120°39'0"W 120°38'0"W 120°37'0"W 120°36'0"W 120°35'0"W 120°34'0"W 120°33'0"W 120°32'0"W 120°31'0"W 120°30'0"W 120°29'0"W 120°28'0"W 120°27'0"W 120°26'0"W

42°48'0"N
42°47'0"N
42°46'0"N
42°45'0"N
42°44'0"N
42°43'0"N
42°42'0"N
42°41'0"N
42°40'0"N
42°39'0"N
42°38'0"N
42°37'0"N
42°36'0"N
42°35'0"N
42°34'0"N
42°33'0"N
42°32'0"N
42°31'0"N
42°30'0"N
42°29'0"N
42°28'0"N
42°27'0"N

42°48'0"N
42°47'0"N
42°46'0"N
42°45'0"N
42°44'0"N
42°43'0"N
42°42'0"N
42°41'0"N
42°40'0"N
42°39'0"N
42°38'0"N
42°37'0"N
42°36'0"N
42°35'0"N
42°34'0"N
42°33'0"N
42°32'0"N
42°31'0"N
42°30'0"N
42°29'0"N
42°28'0"N
42°27'0"N


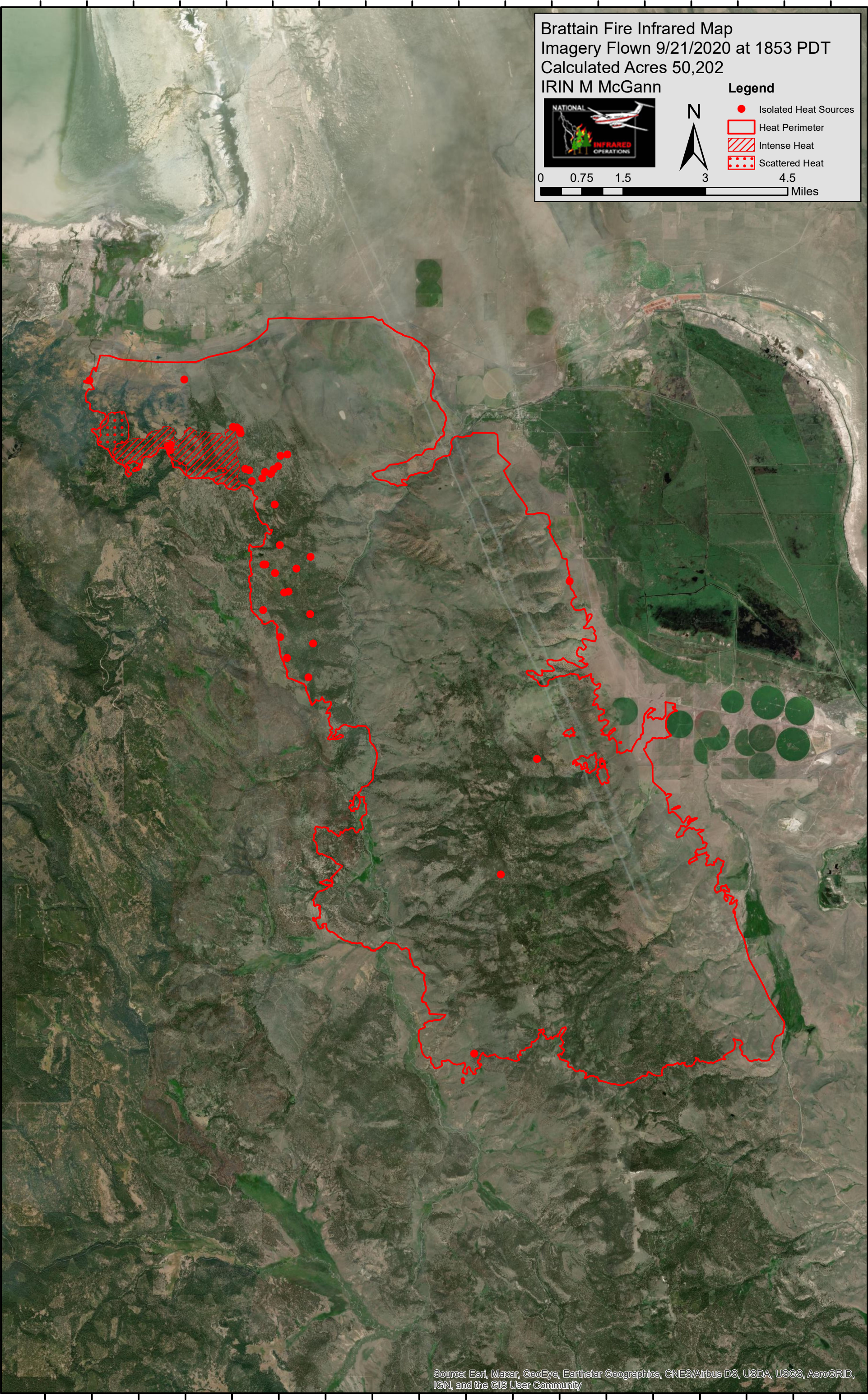
Brattain Fire Infrared Map
 Imagery Flown 9/21/2020 at 1853 PDT
 Calculated Acres 50,202
 IRIN M McGann



Legend

- Isolated Heat Sources
- Heat Perimeter
- Intense Heat
- Scattered Heat

0 0.75 1.5 3 4.5 Miles

Source: Esri, Maxar, GeoEye, Earthstar Geographics, CNES/Airbus DS, USDA, USGS, AeroGRID, IGN, and the GIS User Community

120°43'0"W 120°42'0"W 120°41'0"W 120°40'0"W 120°39'0"W 120°38'0"W 120°37'0"W 120°36'0"W 120°35'0"W 120°34'0"W 120°33'0"W 120°32'0"W 120°31'0"W 120°30'0"W 120°29'0"W 120°28'0"W 120°27'0"W 120°26'0"W