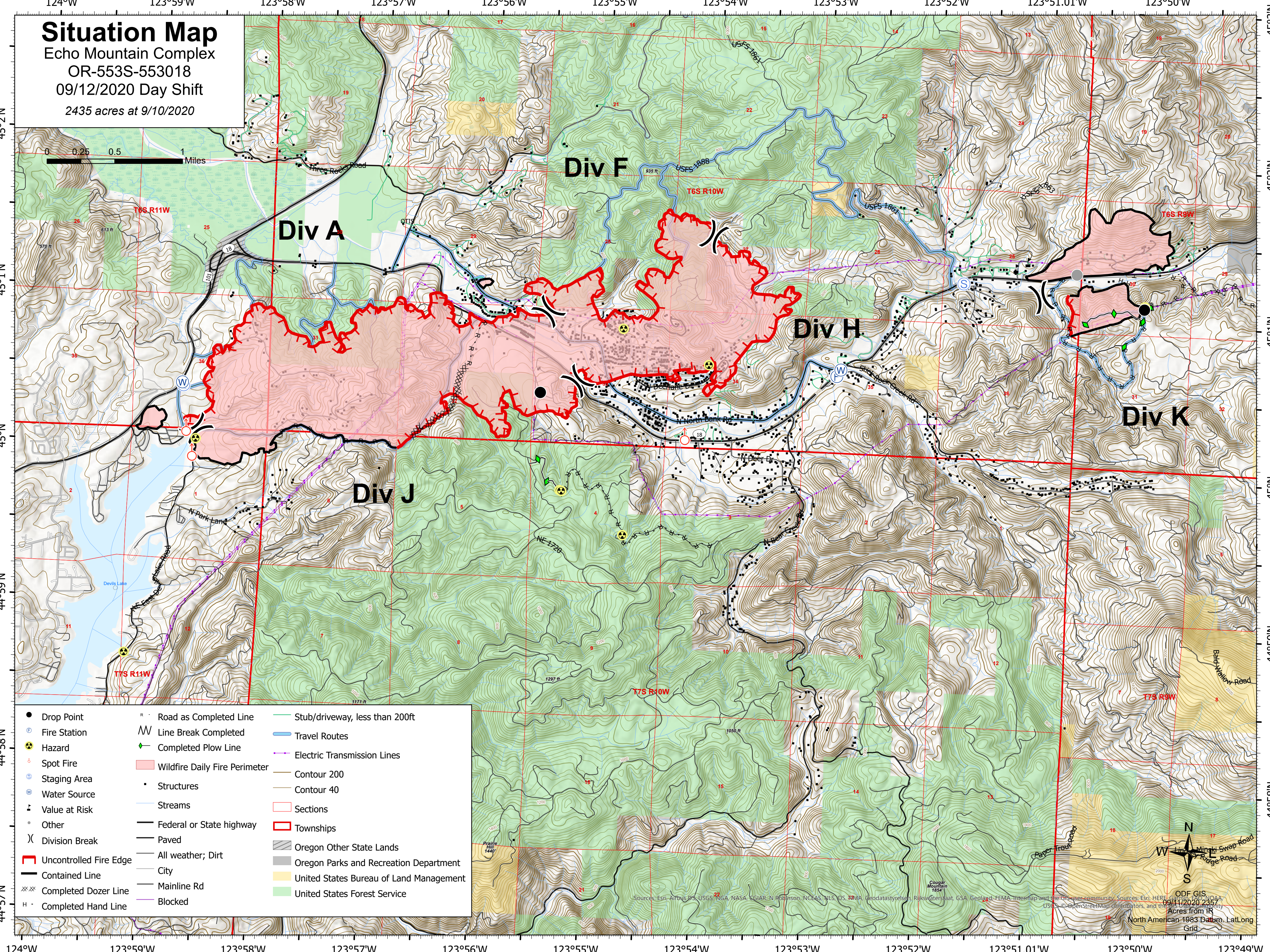
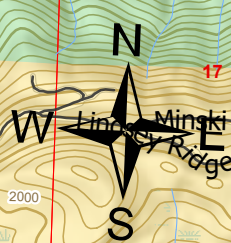


# Situation Map

Echo Mountain Complex  
OR-553S-553018  
09/12/2020 Day Shift  
2435 acres at 9/10/2020



● Drop Point	R Road as Completed Line	— Stub/driveway, less than 200ft
Ⓜ Fire Station	≡≡≡ Line Break Completed	— Travel Routes
☢ Hazard	◆ Completed Plow Line	— Electric Transmission Lines
Ⓢ Spot Fire	▭ Wildfire Daily Fire Perimeter	— Contour 200
Ⓢ Staging Area	• Structures	— Contour 40
Ⓢ Water Source	— Streams	▭ Sections
Ⓢ Value at Risk	— Federal or State highway	▭ Townships
Ⓢ Other	— Paved	▭ Oregon Other State Lands
Ⓢ Division Break	— All weather; Dirt	▭ Oregon Parks and Recreation Department
▭ Uncontrolled Fire Edge	— City	▭ United States Bureau of Land Management
▭ Contained Line	— Mainline Rd	▭ United States Forest Service
Ⓢ Completed Dozer Line	— Blocked	
Ⓢ Completed Hand Line		



Sources: Esri, Airbus DS, USGS, NGA, NASA, CGIAR, N Robinson, NCEAS, NLS, OS, FEMA, Geodatastyrelsen, Rijkswaterstaat, GSA, Geodag, FEMA, Intermap and the GIS user community. Sources: Esri, HERE, DeLorme, Mapbox, OpenStreetMap contributors, and the GIS user community.  
ODF GIS  
09/12/2020 2:32:24  
Acres from IR  
North American 1983 Datum, Lat/Long  
Grid