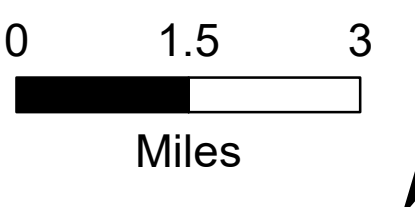


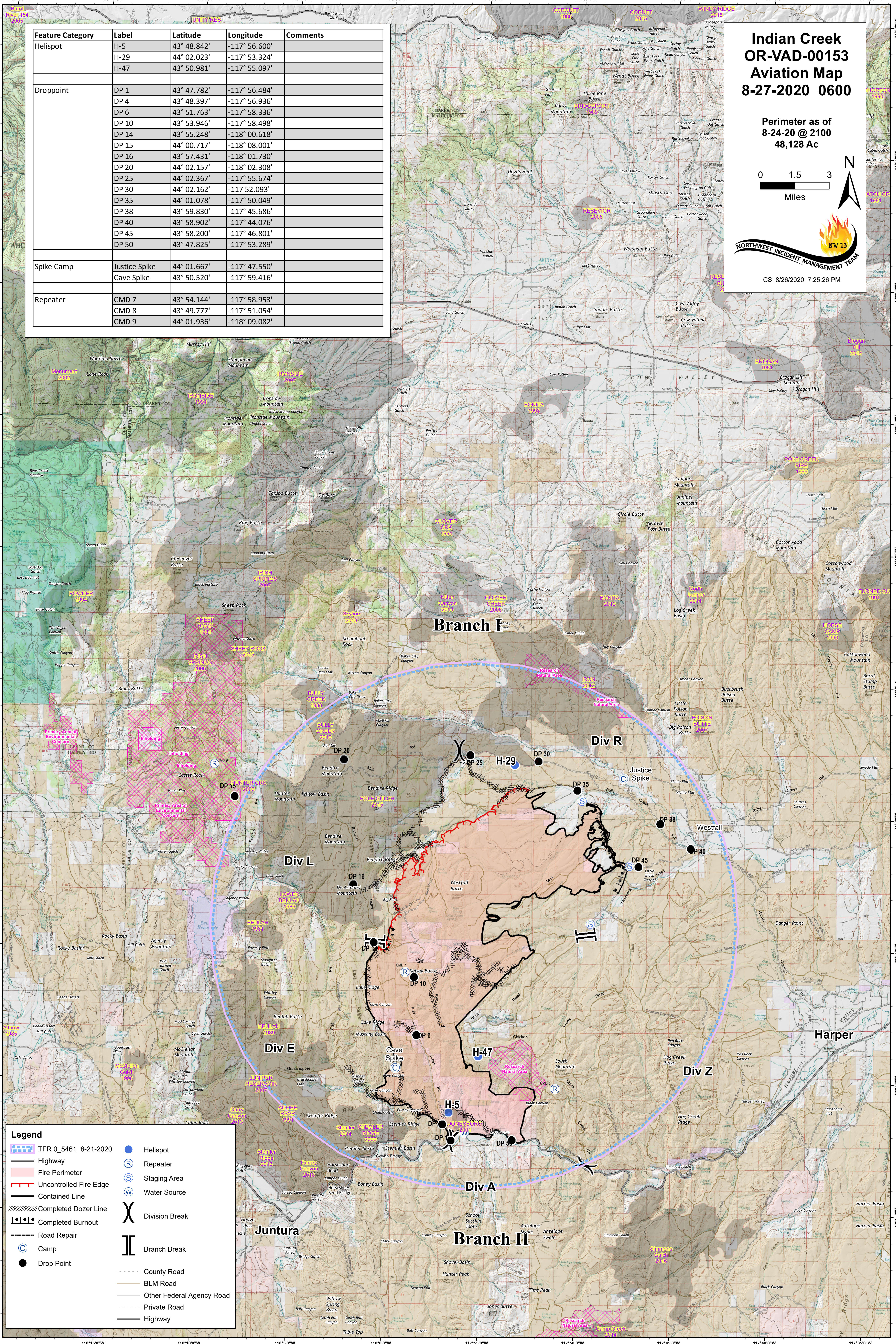
| Feature Category | Label | Latitude | Longitude | Comments |
|------------------|---------------|---------------|---------------|----------|
| Helispot | H-5 | 43° 48.842' | -117° 56.600' | |
| | H-29 | 44° 02.023' | -117° 53.324' | |
| | H-47 | 43° 50.981' | -117° 55.097' | |
| Drop Point | DP 1 | 43° 47.782' | -117° 56.484' | |
| | DP 4 | 43° 48.397' | -117° 56.936' | |
| | DP 6 | 43° 51.763' | -117° 58.336' | |
| | DP 10 | 43° 53.946' | -117° 58.498' | |
| | DP 14 | 43° 55.248' | -118° 00.618' | |
| | DP 15 | 44° 00.717' | -118° 08.001' | |
| | DP 16 | 43° 57.431' | -118° 01.730' | |
| | DP 20 | 44° 02.157' | -118° 02.308' | |
| | DP 25 | 44° 02.367' | -117° 55.674' | |
| | DP 30 | 44° 02.162' | -117 52.093' | |
| | DP 35 | 44° 01.078' | -117° 50.049' | |
| | DP 38 | 43° 59.830' | -117° 45.686' | |
| | DP 40 | 43° 58.902' | -117° 44.076' | |
| DP 45 | 43° 58.200' | -117° 46.801' | | |
| DP 50 | 43° 47.825' | -117° 53.289' | | |
| Spike Camp | Justice Spike | 44° 01.667' | -117° 47.550' | |
| | Cave Spike | 43° 50.520' | -117° 59.416' | |
| Repeater | CMD 7 | 43° 54.144' | -117° 58.953' | |
| | CMD 8 | 43° 49.777' | -117° 51.054' | |
| | CMD 9 | 44° 01.936' | -118° 09.082' | |

Indian Creek OR-VAD-00153 Aviation Map 8-27-2020 0600

Perimeter as of
8-24-20 @ 2100
48,128 Ac



CS 8/26/2020 7:25:26 PM



| Legend | |
|--------|---------------------------|
| | TFR 0_5461 8-21-2020 |
| | Highway |
| | Fire Perimeter |
| | Uncontrolled Fire Edge |
| | Contained Line |
| | Completed Dozer Line |
| | Completed Burnout |
| | Road Repair |
| | Camp |
| | Drop Point |
| | Helispot |
| | Repeater |
| | Staging Area |
| | Water Source |
| | Division Break |
| | Branch Break |
| | County Road |
| | BLM Road |
| | Other Federal Agency Road |
| | Private Road |
| | Highway |