

118°1'0"W 118°0'0"W 117°59'0"W 117°58'0"W 117°57'0"W 117°56'0"W 117°55'0"W 117°54'0"W 117°53'0"W 117°52'0"W 117°51'0"W 117°50'0"W 117°49'0"W 117°48'0"W 117°47'0"W

44°3'0"N  
44°2'0"N  
44°1'0"N  
44°0'0"N  
43°59'0"N  
43°58'0"N  
43°57'0"N  
43°56'0"N  
43°55'0"N  
43°54'0"N  
43°53'0"N  
43°52'0"N  
43°51'0"N  
43°50'0"N  
43°49'0"N  
43°48'0"N  
43°47'0"N

44°3'0"N  
44°2'0"N  
44°1'0"N  
44°0'0"N  
43°59'0"N  
43°58'0"N  
43°57'0"N  
43°56'0"N  
43°55'0"N  
43°54'0"N  
43°53'0"N  
43°52'0"N  
43°51'0"N  
43°50'0"N  
43°49'0"N  
43°48'0"N  
43°47'0"N

**NATIONAL**  
INFRARED OPERATIONS

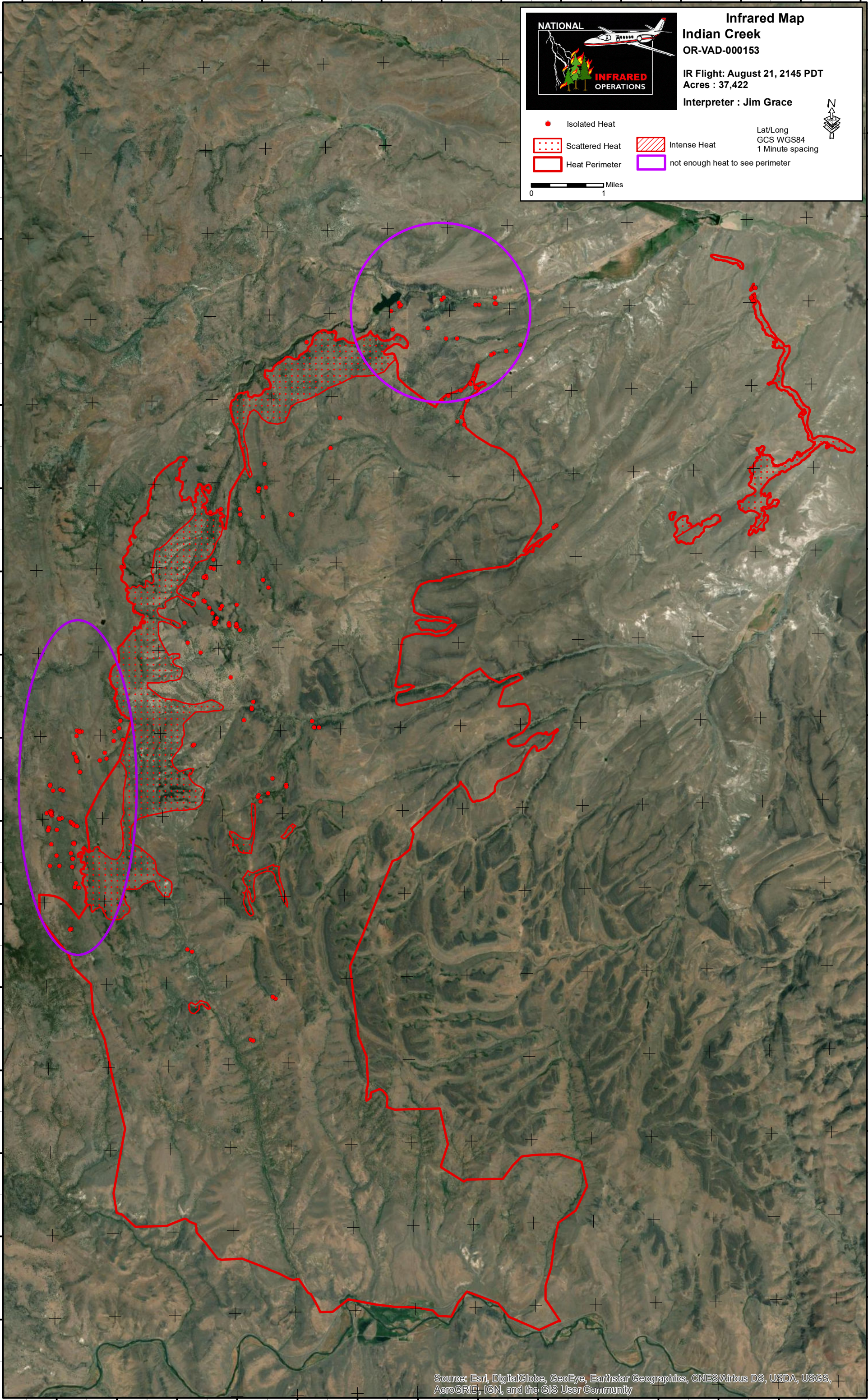
**Infrared Map**  
**Indian Creek**  
OR-VAD-000153

IR Flight: August 21, 2145 PDT  
Acres : 37,422  
Interpreter : Jim Grace

Lat/Long  
GCS WGS84  
1 Minute spacing

Isolated Heat  
Scattered Heat  
Heat Perimeter  
Intense Heat  
not enough heat to see perimeter

0 1 Miles



Source: Esri, DigitalGlobe, GeoEye, Earthstar Geographics, CNES/Airbus DS, USDA, USGS, AeroGRID, IGN, and the GIS User Community

118°1'0"W 118°0'0"W 117°59'0"W 117°58'0"W 117°57'0"W 117°56'0"W 117°55'0"W 117°54'0"W 117°53'0"W 117°52'0"W 117°51'0"W 117°50'0"W 117°49'0"W 117°48'0"W