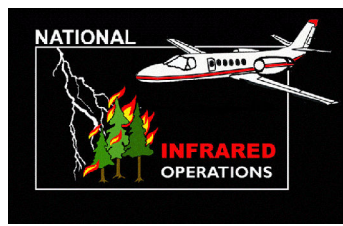


118°1'0"W 118°0'0"W 117°59'0"W 117°58'0"W 117°57'0"W 117°56'0"W 117°55'0"W 117°54'0"W 117°53'0"W 117°52'0"W 117°51'0"W 117°50'0"W 117°49'0"W 117°48'0"W 117°47'0"W

44°3'0"N
44°2'0"N
44°1'0"N
44°0'0"N
43°59'0"N
43°58'0"N
43°57'0"N
43°56'0"N
43°55'0"N
43°54'0"N
43°53'0"N
43°52'0"N
43°51'0"N
43°50'0"N
43°49'0"N
43°48'0"N

44°3'0"N
44°2'0"N
44°1'0"N
44°0'0"N
43°59'0"N
43°58'0"N
43°57'0"N
43°56'0"N
43°55'0"N
43°54'0"N
43°53'0"N
43°52'0"N
43°51'0"N
43°50'0"N
43°49'0"N
43°48'0"N

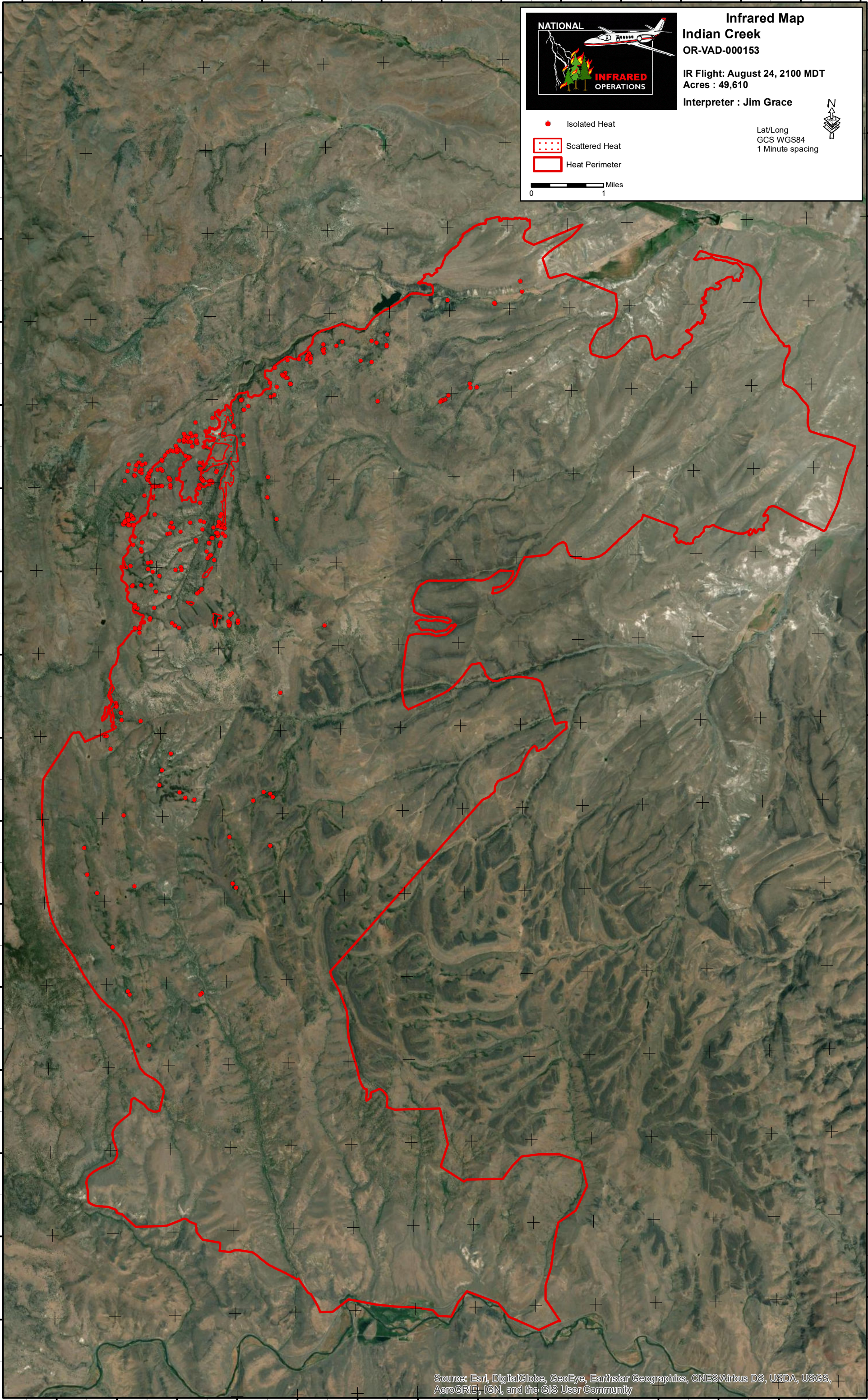


Infrared Map
Indian Creek
OR-VAD-000153
IR Flight: August 24, 2100 MDT
Acres : 49,610
Interpreter : Jim Grace

- Isolated Heat
- Scattered Heat
- Heat Perimeter



Lat/Long
GCS WGS84
1 Minute spacing



Source: Esri, DigitalGlobe, GeoEye, Earthstar Geographics, CNES/Airbus DS, USDA, USGS, AeroGRID, IGN, and the GIS User Community

118°1'0"W 118°0'0"W 117°59'0"W 117°58'0"W 117°57'0"W 117°56'0"W 117°55'0"W 117°54'0"W 117°53'0"W 117°52'0"W 117°51'0"W 117°50'0"W 117°49'0"W 117°48'0"W