






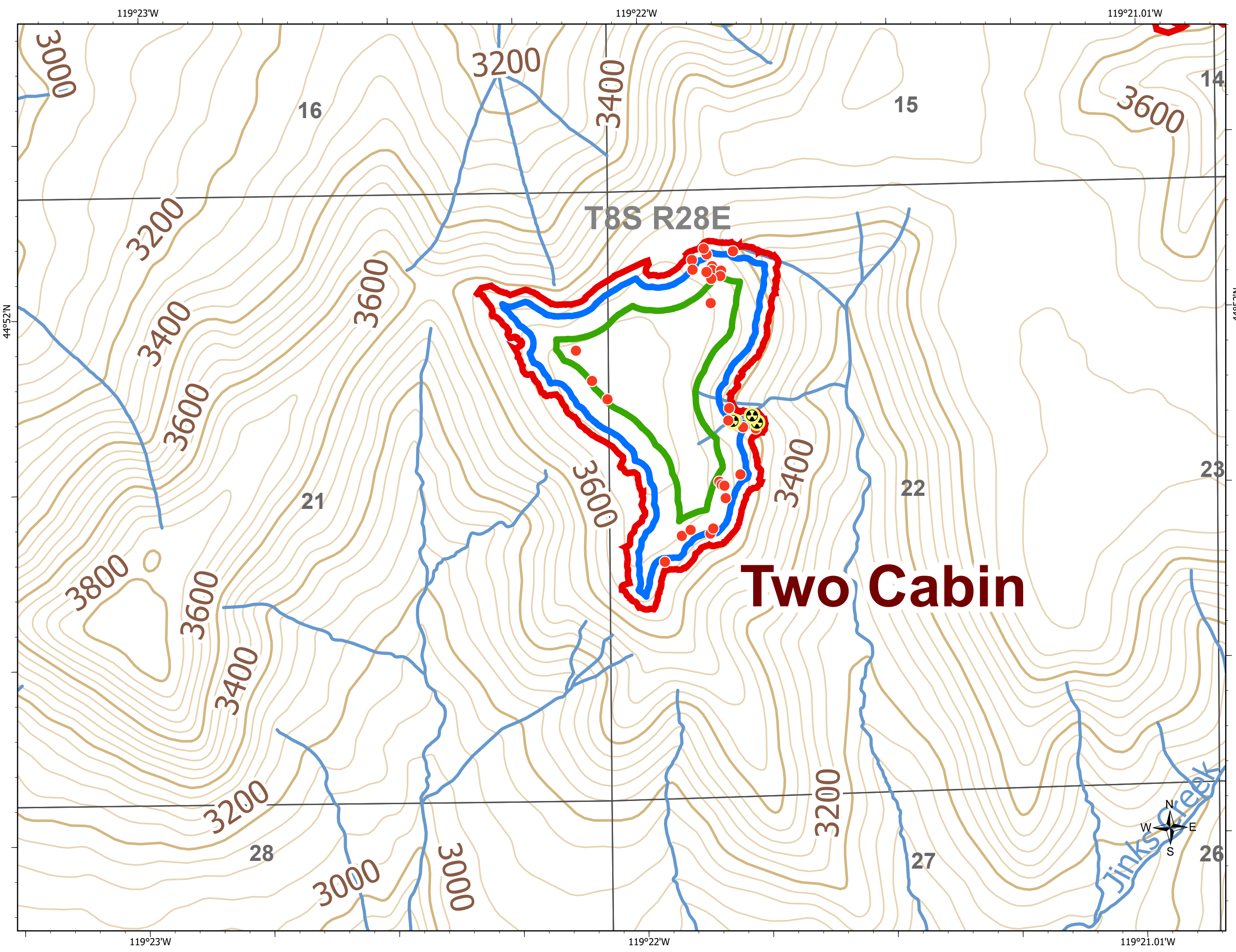


**Mop**  
**Two Cabin**  
STEET COMPLEX  
OR952S064  
LAUREL  
OR952S063  
08/27/2020

-  Hazard
-  Hot Spot
-  Wildfire Daily Fire Perimeter
-  Stream
-  PLSS Section
-  100' Interior Buffer
-  300' Interior Buffer



0.25

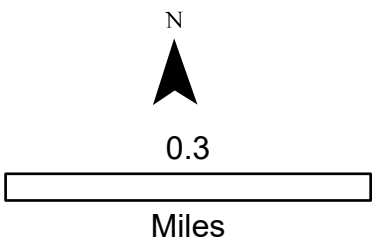
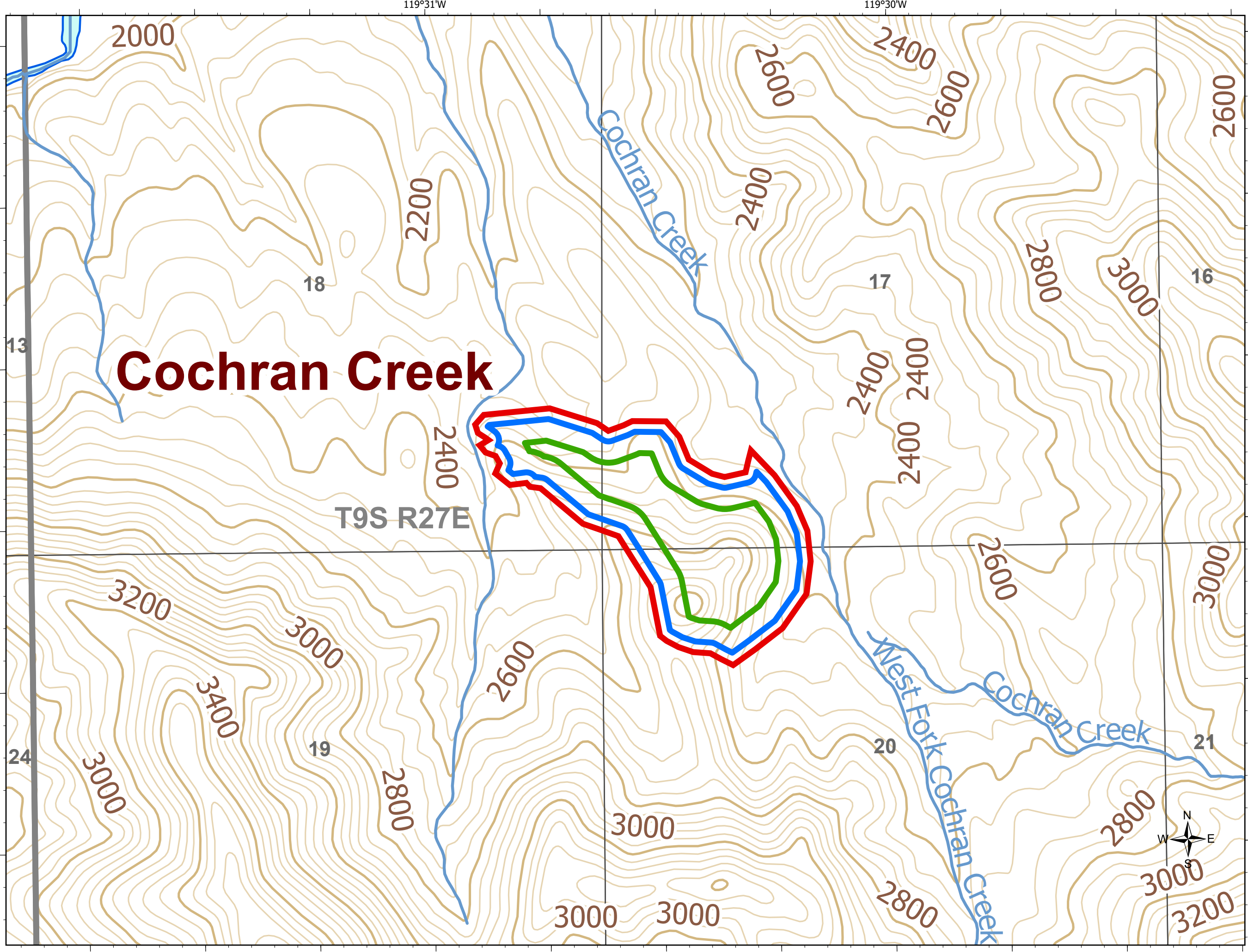
Miles

ODF IMT 2  
08/26/2020 1927  
Acres from GIS  
North American 1983 Datum  
Lat Long Grid



**Mop**  
**Cochrane**  
STEET COMPLEX  
OR952S064  
LAUREL  
OR952S063  
08/27/2020

- Wildfire Daily Fire Perimeter
- Stream
- PLSS Section
- 100' Interior Buffer
- 300' Interior Buffer

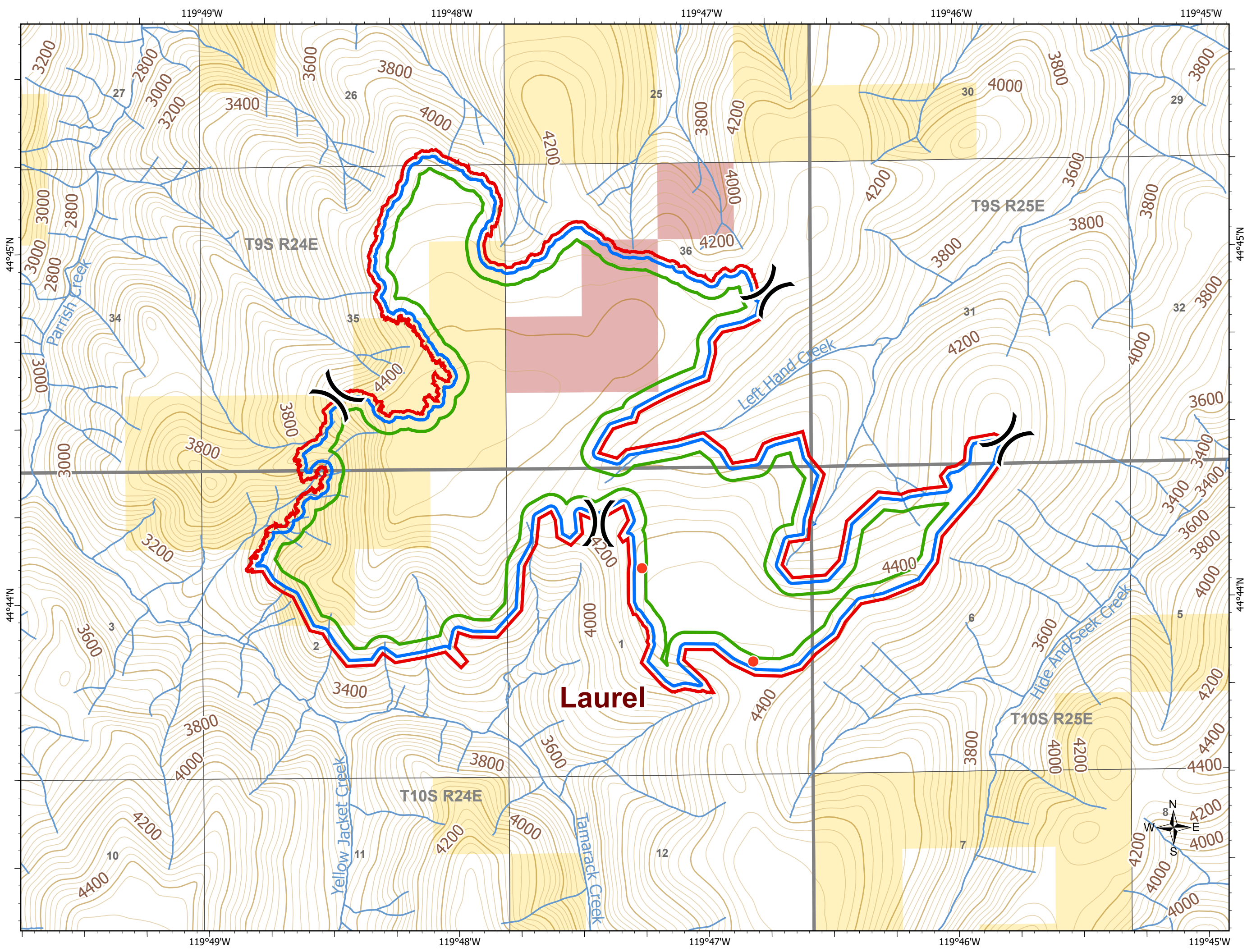


ODF IMT 2  
08/26/2020 1927  
Acres from GIS  
North American 1983 Datum  
Lat Long Grid



**Mop**  
**Laurel**  
 STEET COMPLEX  
 OR952S064  
 LAUREL  
 OR952S063  
 08/27/2020

- Hot Spot
-  Division Break
-  Wildfire Daily Fire Perimeter
-  Stream
-  PLSS Section
-  100' Interior Buffer
-  300' Interior Buffer



0.5

Miles

ODF IMT 2  
 08/26/2020 1927  
 Acres from GIS  
 North American 1983 Datum  
 Lat Long Grid

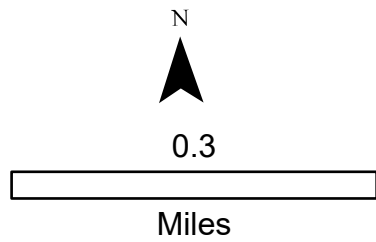
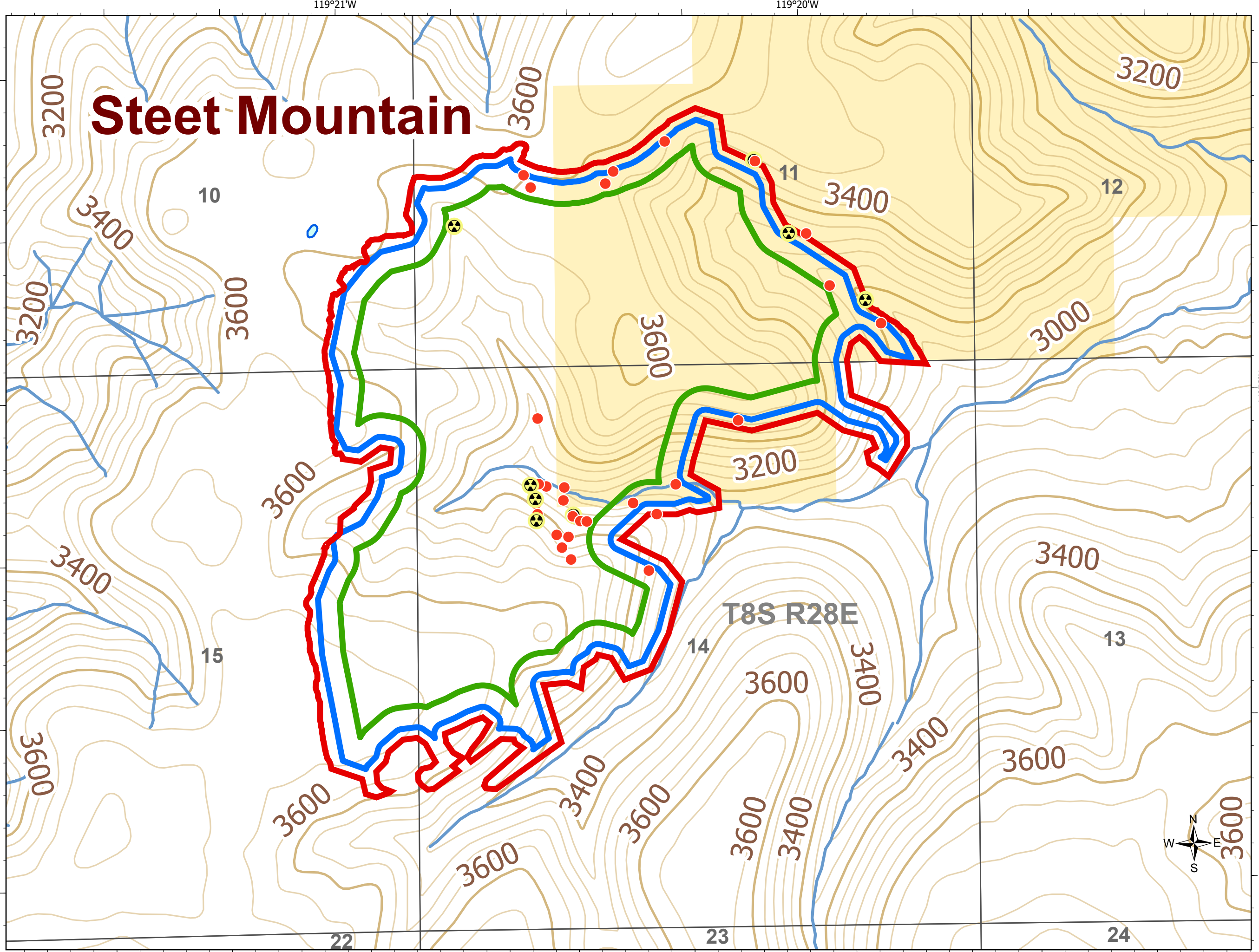




**Mop**  
**Steet Moutain**  
STEET COMPLEX  
OR952S064  
LAUREL  
OR952S063  
08/27/2020

- Hazard
- Hot Spot
- Wildfire Daily Fire Perimeter
- Stream
- PLSS Section
- 100' Interior Buffer
- 300' Interior Buffer

# Steet Mountain



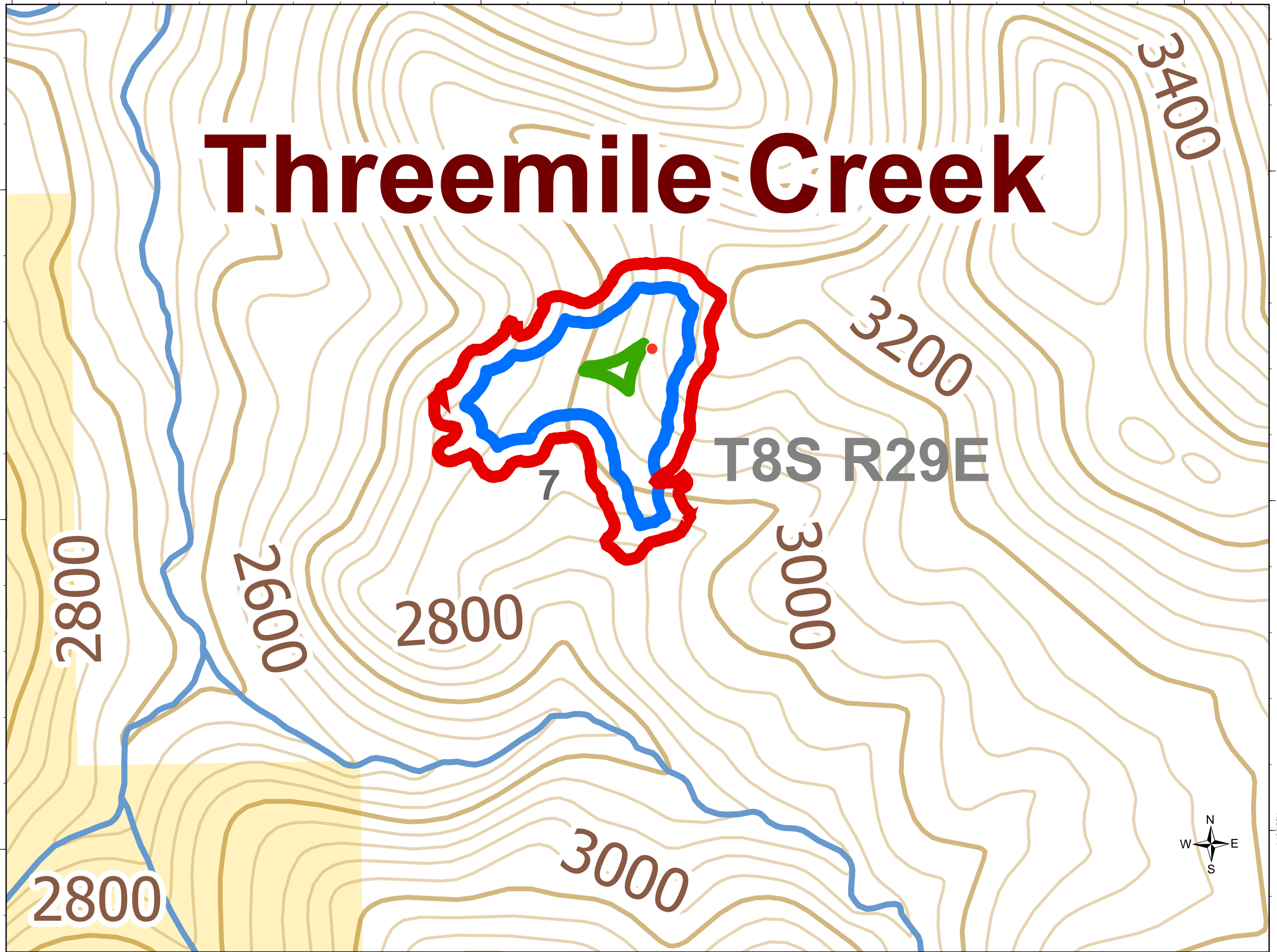
ODF IMT 2  
08/26/2020 1927  
Acres from GIS  
North American 1983 Datum  
Lat Long Grid

119°17'W

**Mop**  
**Threemile**  
STEET COMPLEX  
OR952S064  
LAUREL  
OR952S063  
08/27/2020

- Hot Spot
- ▬ Wildfire Daily Fire Perimeter
- ▬ Stream
- PLSS Section
- 100' Interior Buffer
- 300' Interior Buffer

# Threemile Creek



0.15

Miles

ODF IMT 2  
08/26/2020 1927  
Acres from GIS  
North American 1983 Datum  
Lat Long Grid



44°53'N

44°53'N

119°17'W