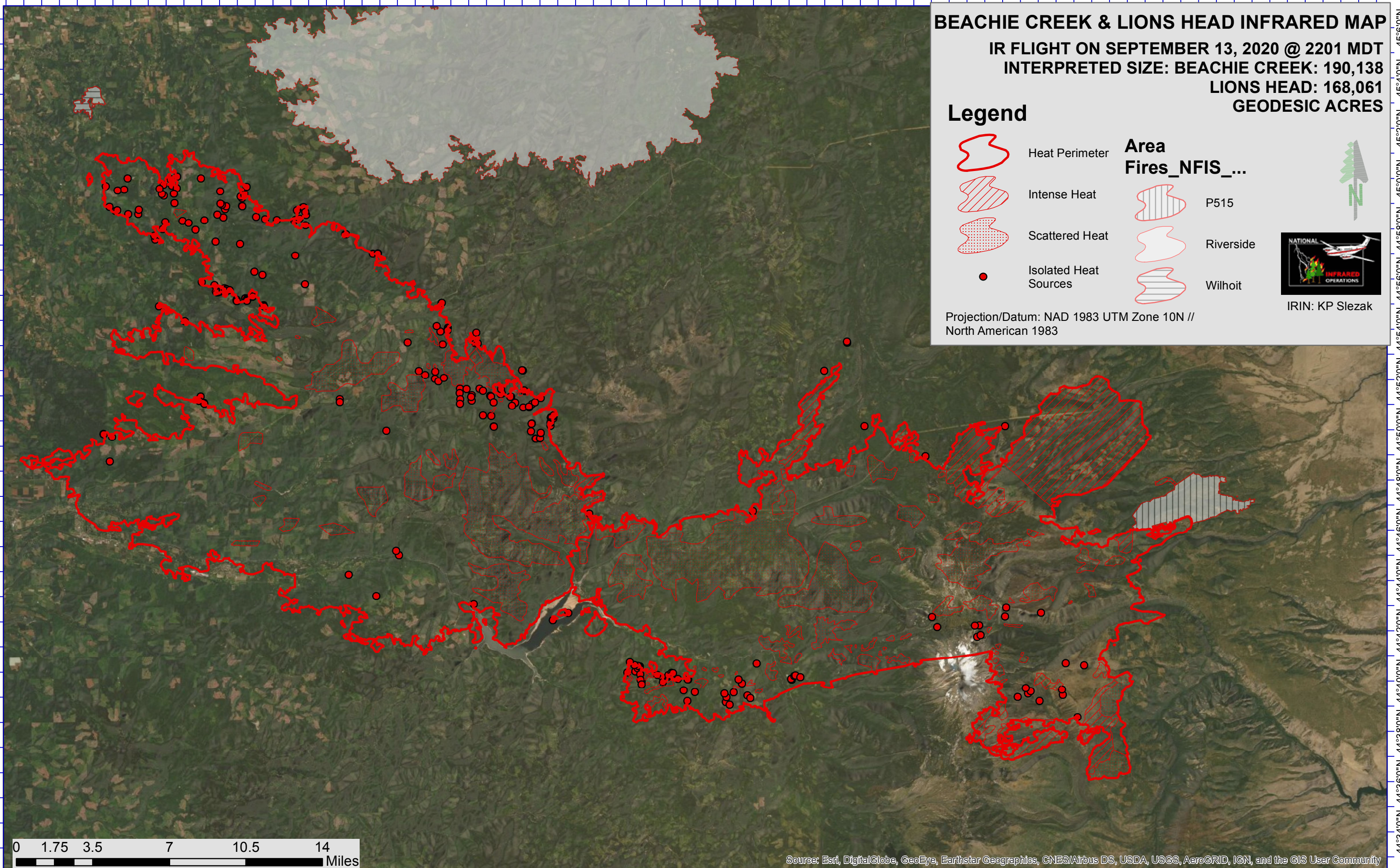


122°40'0"W 122°36'0"W 122°32'0"W 122°28'0"W 122°24'0"W 122°20'0"W 122°16'0"W 122°12'0"W 122°9'0"W 122°6'0"W 122°3'0"W 122°0'0"W 121°56'0"W 121°52'0"W 121°48'0"W 121°44'0"W 121°40'0"W 121°36'0"W 121°32'0"W 121°28'0"W 121°24'0"W

44°34'0"N 44°36'0"N 44°38'0"N 44°40'0"N 44°42'0"N 44°44'0"N 44°46'0"N 44°48'0"N 44°50'0"N 44°52'0"N 44°54'0"N 44°56'0"N 44°58'0"N 45°0'0"N 45°2'0"N 45°4'0"N 45°6'0"N



BEACHIE CREEK & LIONS HEAD INFRARED MAP
 IR FLIGHT ON SEPTEMBER 13, 2020 @ 2201 MDT
 INTERPRETED SIZE: BEACHIE CREEK: 190,138
 LIONS HEAD: 168,061
 GEODESIC ACRES

Legend

| | | | |
|--|-----------------------|-----------------------|-----------|
| | Heat Perimeter | Area | |
| | Intense Heat | Fires_NFIS_... | |
| | Scattered Heat | | P515 |
| | Isolated Heat Sources | | Riverside |
| | | | Wilhoit |

Projection/Datum: NAD 1983 UTM Zone 10N // North American 1983

IRIN: KP Slezak



Source: Esri, DigitalGlobe, GeoEye, Earthstar Geographics, CNES/Airbus DS, USDA, USGS, AeroGRID, IGN, and the GIS User Community

122°40'0"W 122°36'0"W 122°32'0"W 122°28'0"W 122°24'0"W 122°20'0"W 122°16'0"W 122°12'0"W 122°9'0"W 122°6'0"W 122°3'0"W 122°0'0"W 121°57'0"W 121°53'0"W 121°49'0"W 121°45'0"W 121°41'0"W 121°37'0"W 121°33'0"W 121°29'0"W 121°25'0"W