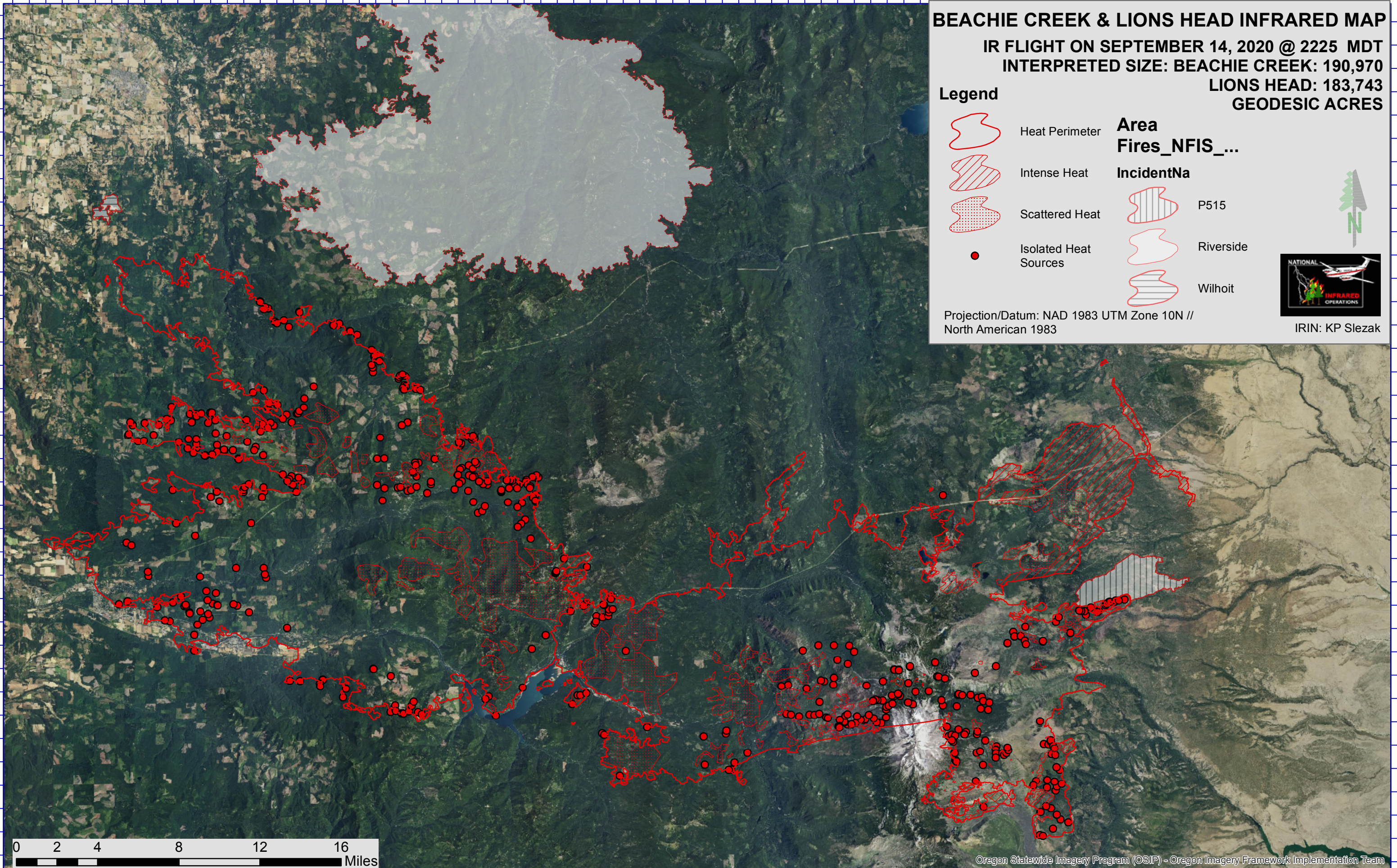


122°39'0"W 122°35'0"W 122°31'0"W 122°27'0"W 122°23'0"W 122°19'0"W 122°15'0"W 122°11'0"W 122°7'0"W 122°3'0"W 121°59'0"W 121°55'0"W 121°51'0"W 121°47'0"W 121°43'0"W 121°39'0"W 121°35'0"W 121°31'0"W 121°27'0"W 121°23'0"W 121°19'0"W

45°12'0"N
45°9'0"N
45°7'0"N
45°5'0"N
45°3'0"N
45°1'0"N
44°59'0"N
44°57'0"N
44°55'0"N
44°53'0"N
44°51'0"N
44°49'0"N
44°47'0"N
44°45'0"N
44°43'0"N
44°41'0"N
44°39'0"N



BEACHIE CREEK & LIONS HEAD INFRARED MAP

IR FLIGHT ON SEPTEMBER 14, 2020 @ 2225 MDT

INTERPRETED SIZE: BEACHIE CREEK: 190,970

LIONS HEAD: 183,743

GEODESIC ACRES

Legend



Heat Perimeter



Intense Heat



Scattered Heat



Isolated Heat Sources

Area

Fires_NFIS_...

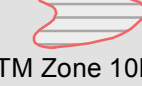
IncidentNa



P515

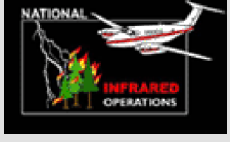


Riverside

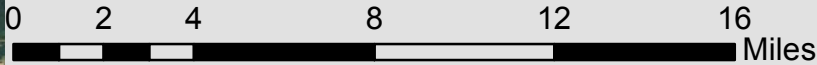


Wilhoit

Projection/Datum: NAD 1983 UTM Zone 10N // North American 1983



IRIN: KP Slezak



122°41'0"W 122°37'0"W 122°33'0"W 122°29'0"W 122°25'0"W 122°21'0"W 122°17'0"W 122°13'0"W 122°9'0"W 122°6'0"W 122°3'0"W 122°0'0"W 121°56'0"W 121°52'0"W 121°48'0"W 121°44'0"W 121°40'0"W 121°36'0"W 121°32'0"W 121°28'0"W 121°24'0"W 121°20'0"W