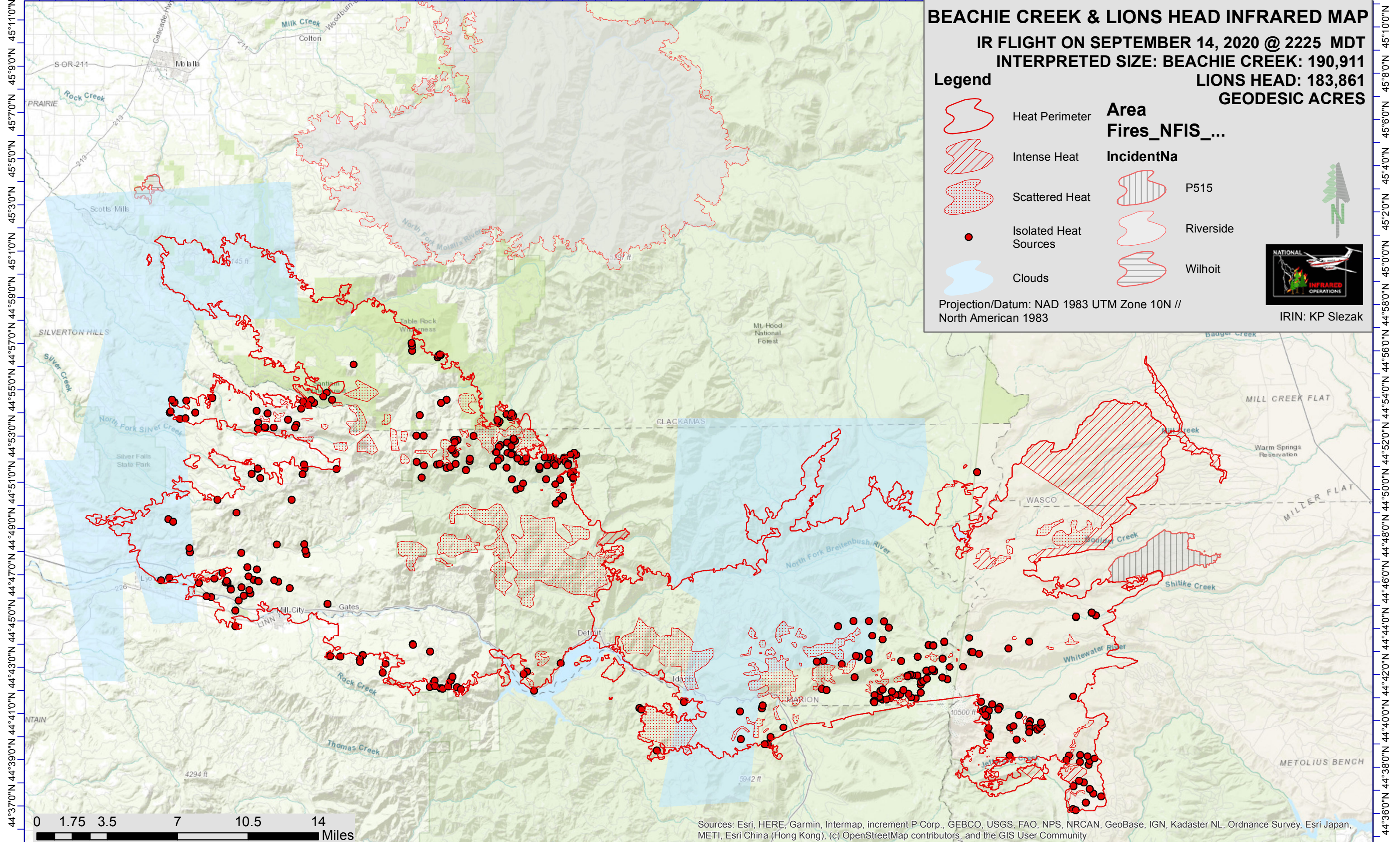


122°40'0"W 122°36'0"W 122°32'0"W 122°28'0"W 122°24'0"W 122°20'0"W 122°16'0"W 122°12'0"W 122°8'0"W 122°5'0"W 122°2'0"W 121°58'0"W 121°54'0"W 121°50'0"W 121°46'0"W 121°42'0"W 121°38'0"W 121°34'0"W 121°30'0"W 121°26'0"W 121°22'0"W



### BEACHIE CREEK & LIONS HEAD INFRARED MAP

IR FLIGHT ON SEPTEMBER 14, 2020 @ 2225 MDT  
 INTERPRETED SIZE: BEACHIE CREEK: 190,911  
 LIONS HEAD: 183,861  
 GEODESIC ACRES

**Legend**

	Heat Perimeter	<b>Area Fires_NFIS_...</b>	
	Intense Heat	<b>IncidentNa</b>	
	Scattered Heat		P515
	Isolated Heat Sources		Riverside
	Clouds		Wilhoit

Projection/Datum: NAD 1983 UTM Zone 10N // North American 1983

IRIN: KP Slezak

44°37'0"N 44°39'0"N 44°41'0"N 44°43'0"N 44°45'0"N 44°47'0"N 44°49'0"N 44°51'0"N 44°53'0"N 44°55'0"N 44°57'0"N 44°59'0"N 45°1'0"N 45°3'0"N 45°5'0"N 45°7'0"N 45°9'0"N 45°11'0"N

Sources: Esri, HERE, Garmin, Intermap, increment P Corp., GEBCO, USGS, FAO, NPS, NRCAN, GeoBase, IGN, Kadaster NL, Ordnance Survey, Esri Japan, METI, Esri China (Hong Kong), (c) OpenStreetMap contributors, and the GIS User Community