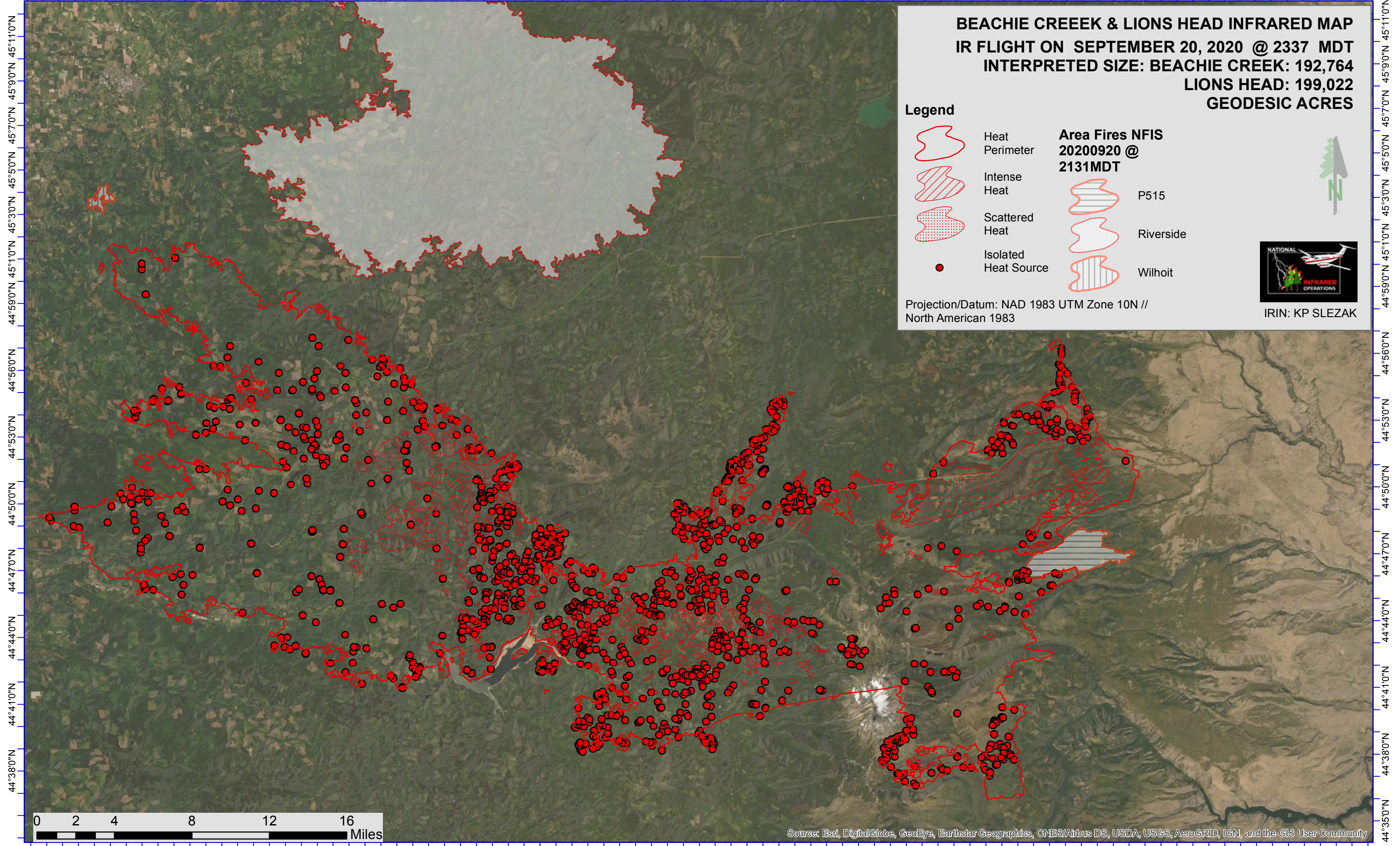









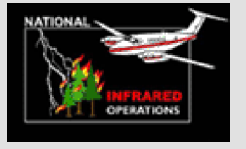
122°40'0"W 122°36'0"W 122°32'0"W 122°28'0"W 122°24'0"W 122°20'0"W 122°16'0"W 122°12'0"W 122°8'0"W 122°4'0"W 122°0'0"W 121°56'0"W 121°52'0"W 121°48'0"W 121°44'0"W 121°40'0"W 121°36'0"W 121°32'0"W 121°28'0"W 121°24'0"W 121°20'0"W 121°16'0"W



**BEACHIE CREEK & LIONS HEAD INFRARED MAP**  
**IR FLIGHT ON SEPTEMBER 20, 2020 @ 2337 MDT**  
**INTERPRETED SIZE: BEACHIE CREEK: 192,764**  
**LIONS HEAD: 199,022**  
**GEODESIC ACRES**

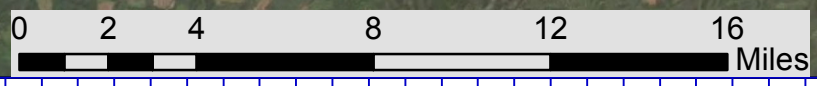
**Legend**

-  Heat Perimeter
  -  Intense Heat
  -  Scattered Heat
  -  Isolated Heat Source
- Area Fires NFIS**  
**20200920 @ 2131MDT**
-  P515
  -  Riverside
  -  Wilhoit



Projection/Datum: NAD 1983 UTM Zone 10N // North American 1983

IRIN: KP SLEZAK



Source: Esri, DigitalGlobe, GeoEye, Earthstar Geographics, CNES/Airbus DS, USDA, USGS, AeroGRID, IGN, and the GIS User Community

122°41'0"W 122°37'0"W 122°33'0"W 122°29'0"W 122°25'0"W 122°21'0"W 122°17'0"W 122°13'0"W 122°9'0"W 122°5'0"W 122°1'0"W 121°57'0"W 121°53'0"W 121°49'0"W 121°45'0"W 121°41'0"W 121°37'0"W 121°33'0"W 121°29'0"W 121°25'0"W 121°21'0"W 121°17'0"W