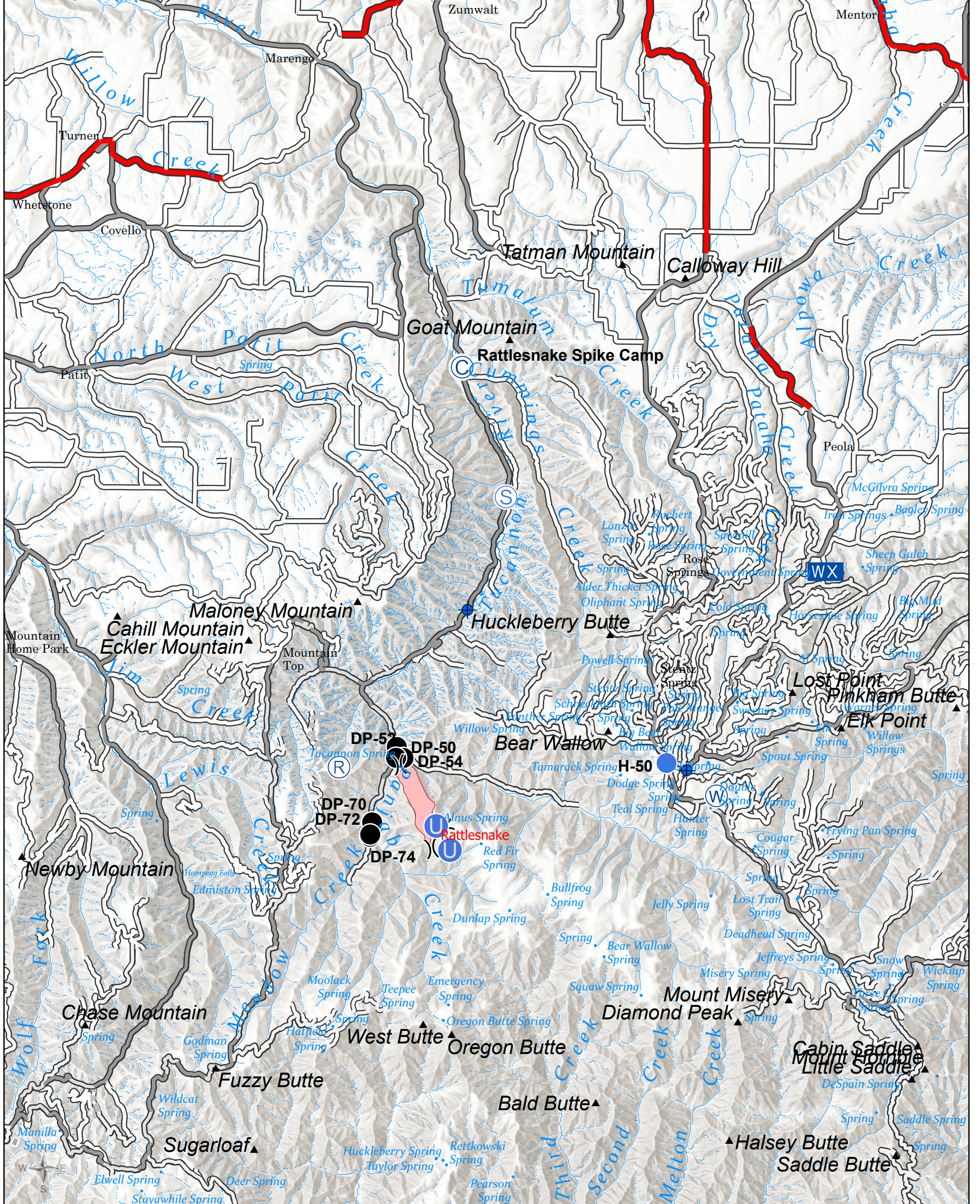


Air Ops -North Branch

August 27, 2020

FeatureCategory	Label	Comments	Latitude	Longitude	Elevation (m)	Elevation (ft)
Camp	Rattlesnake Spike Camp		46° 20.20748429' N	117° 40.60461092' W	631	2071
Dip Site			46° 12.03416535' N	117° 33.91773637' W	1675	5495
Dip Site			46° 15.27209785' N	117° 40.38474135' W	782	2566
Dip Site			46° 12.40181231' N	117° 42.50568250' W	903	2963
Drop Point	DP-50	DP 1	46° 12.46084967' N	117° 42.42584010' W	903	2963
Drop Point	DP-54	DP 10	46° 12.24018101' N	117° 42.22724930' W	913	2995
Drop Point	DP-70	DP 3	46° 10.92134382' N	117° 43.12860735' W	988	3241
Drop Point	DP-74	DP 5	46° 10.63082035' N	117° 43.18390280' W	1004	3295
Drop Point	DP-72	DP 4	46° 10.67526289' N	117° 43.18241417' W	1001	3283
Drop Point	DP-52	DP 2	46° 12.24191858' N	117° 42.44558449' W	912	2993
Helispot	H-50	Clearwater Helispot	46° 12.17881659' N	117° 34.51029866' W	1726	5664
Staging Area			46° 17.57124393' N	117° 39.28293761' W	708	2323
Unimproved Landing Area		Approved for all types	46° 10.86036102' N	117° 41.25082657' W	1616	5301
Unimproved Landing Area		Approved for T2, T3. On uphill slope exit.	46° 10.37036102' N	117° 40.84082638' W	1638	5373
Water Source		Draft site w. volume pump	46° 11.51903473' N	117° 33.03958040' W	1684	5524



Meacham Complex OR-UMF-000923

Fire Perimeter as of
08/25/2020 2013 hrs
742 Acres

- Camp
- ◆ Dip Site
- Drop Point
- Unimproved Landing Area
- Helispot
- ☑ Mobile Weather Unit
- Ⓜ Repeater
- Ⓢ Staging Area
- Ⓦ Water Source
- ⌋ Division Break
- Road, Not Maintained for Passenger Car

