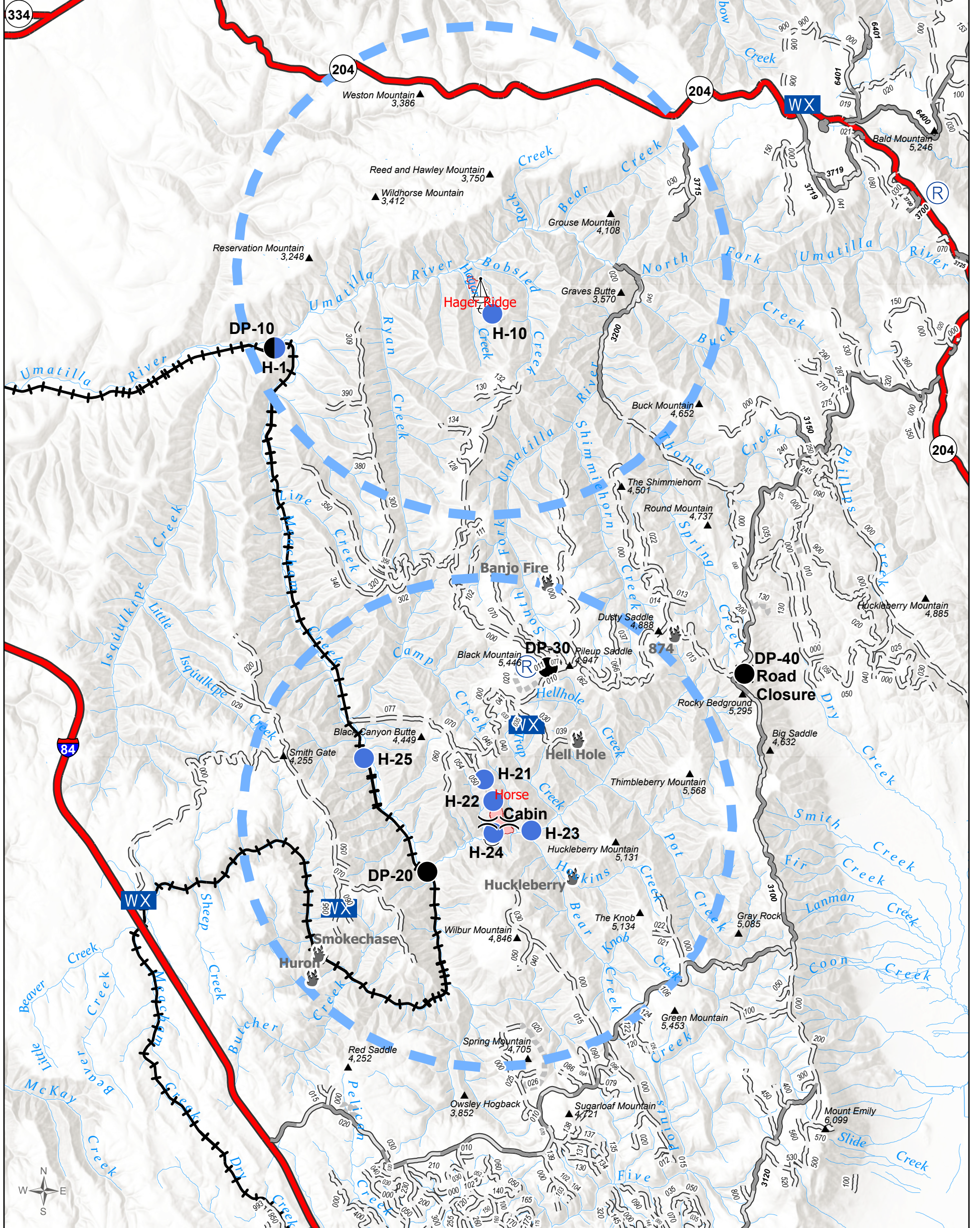


Air Ops - South Branch

August 27, 2020

FeatureCategory	Label	Comments	Latitude	Longitude	Elevation (m)	Elevation (ft)
Drop Point	DP-10		45° 42.00901071' N	118° 21.79571809' W	533	1748
Drop Point	DP-20		45° 31.38978395' N	118° 17.11218387' W	765	2510
Drop Point	DP-40		45° 35.52035577' N	118° 08.00582410' W	1519	4983
Drop Point	DP-30		45° 35.59235517' N	118° 13.71382518' W	1526	5007
Helispot	H-22	Type 3,2 Desired medivac	45° 32.85135483' N	118° 15.23382492' W	1211	3975
Helispot	H-10		45° 42.77735554' N	118° 15.48082691' W	1147	3764
Helispot	H-21	Type 3, 2	45° 33.28835482' N	118° 15.51282503' W	1386	4548
Helispot	H-23	Type 3	45° 32.26335492' N	118° 14.11582455' W	842	2761
Helispot	H-24	Type 3, 2 Desired medivac	45° 32.20135480' N	118° 15.21282476' W	816	2676
Helispot	H-1	DP-10	45° 42.00901071' N	118° 21.79571809' W	533	1748
Helispot	H-25	Occasional use only, medivac	45° 33.68235452' N	118° 19.00082575' W	705	2314
Value at Risk	Cabin		45° 32.26300005' N	118° 14.11500002' W	842	2761



Meacham Complex OR-UMF-000923

Fire Perimeter as of
08/25/2020 2013 hrs
742 Acres

- ✕ Closure
- Drop Point
- Helispot
- WX Mobile Weather Unit
- Ⓜ Repeater
- ▲ Sling Site
- ▲ Value at Risk
-) (Division Break
- Temporary Flight Restriction
- Highway
- Paved Road
- Gravel Road, Suitable for Passenger Car
- Road, Not Maintained for Passenger Car
- Other USFS Roads
- Railroad
- 🔥 Fire Active
- 🔥 Fire Declared Out
- Points20200826_2135

