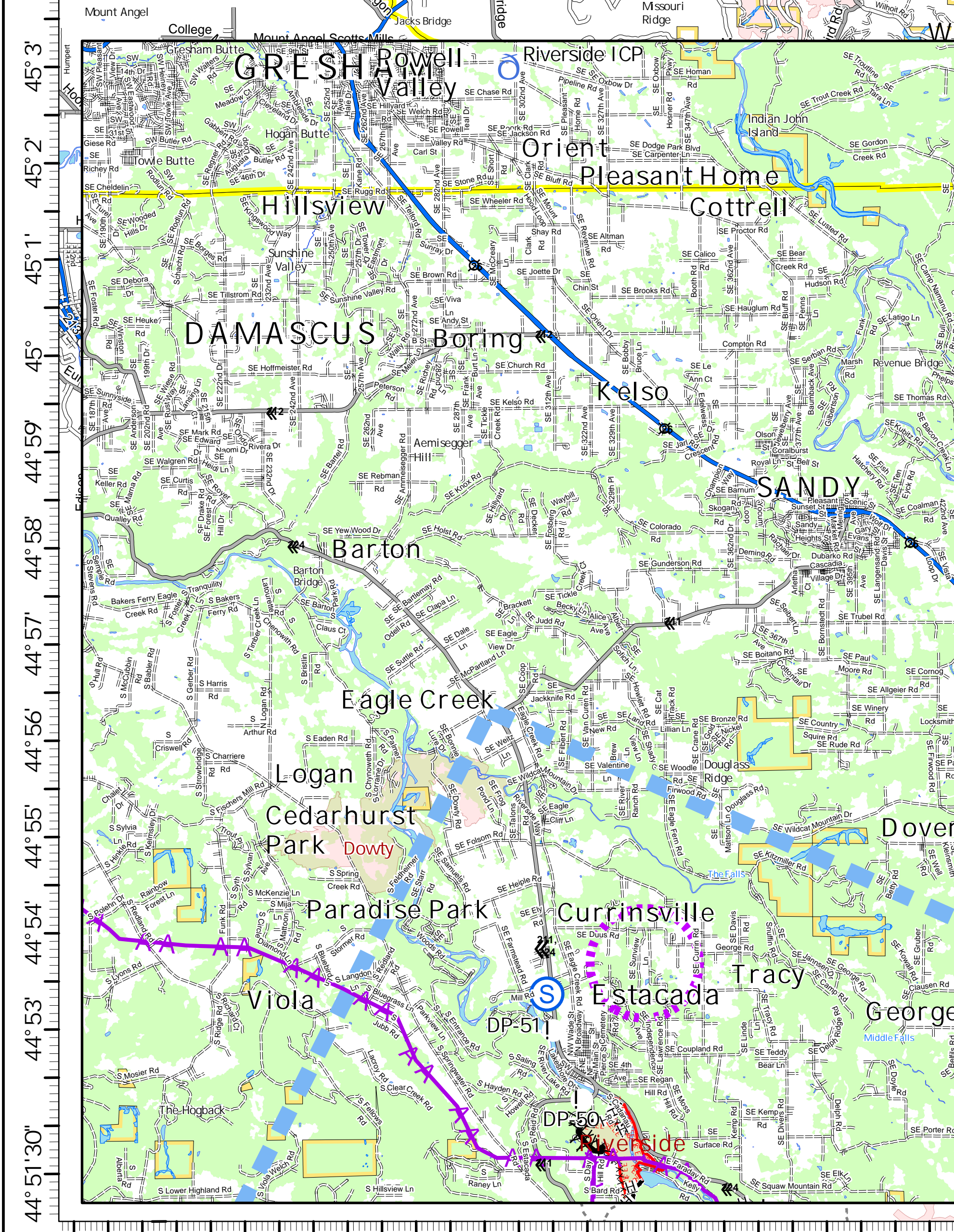
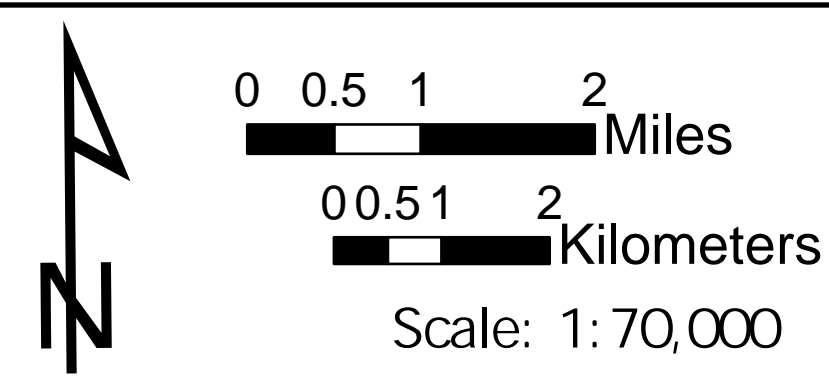


FC Point Type	Label	Latitude	Longitude
Bridge	35 Tons	45° 16.068' N	122° 18.853' W
Closure	Road Closed	45° 12.426'	-121° 56.925' W
Dip Site	Scoop Site	45° 7.261'	-121° 47.139' W
Drop Point	DP-10	45° 10.341' N	122° 26.069' W
Drop Point	DP-15	45° 10.998' N	122° 18.559' W
Drop Point	DP-2	45° 8.552' N	122° 24.844' W
Drop Point	DP-30	45° 12.293' N	122° 21.789' W
Drop Point	DP-4	45° 9.233' N	122° 24.864' W
Drop Point	DP-50	45° 16.869' N	122° 20.162' W
Drop Point	DP-51	45° 17.695' N	122° 20.636' W
Drop Point	DP-52	45° 15.558' N	122° 17.028' W
Drop Point	DP-55	45° 13.415' N	122° 14.616' W
Drop Point	DP-57	45° 12.745' N	122° 12.774' W
Drop Point	DP-6	45° 9.242' N	122° 27.948' W
Drop Point	DP-60	45° 12.184' N	122° 9.571' W
Drop Point	DP-62	45° 13.098' N	122° 8.526' W
Drop Point	DP-63	45° 14.601' N	122° 7.156' W
Drop Point	DP-65	45° 12.210' N	122° 07.946' W
Drop Point	DP-66	45° 12.456' N	122° 6.394' W
Drop Point	DP-67	45° 12.603' N	122° 3.752' W
Drop Point	DP-69	45° 13.216' N	122° 1.451' W
Drop Point	DP-71	45° 13.873' N	122° 0.625' W
Drop Point	DP-72	45° 13.433' N	121° 59.829' W
Drop Point	DP-73	45° 12.899' N	121° 59.403' W
Drop Point	DP-74	45° 12.699' N	121° 58.672' W
Drop Point	DP-75	45° 12.711' N	121° 57.438' W
Drop Point	DP-78	45° 01.195' N	122° 20.479' W
Drop Point	DP-80	45° 02.586' N	122° 23.702' W
Drop Point	DP-82	45° 02.603' N	122° 25.144' W
Drop Point	DP-84	45° 04.672' N	122° 26.687' W
Drop Point	DP-86	45° 4.544' N	122° 28.373' W
Drop Point	DP-87	45° 04.872' N	122° 29.119' W
Drop Point	DP-88	45° 5.216' N	122° 28.993' W
Drop Point	DP-89	45° 5.689' N	122° 27.308' W
Drop Point	DP-90	45° 08.704' N	122° 33.806' W
Drop Point	DP-94	45° 07.565' N	122° 27.849' W
Drop Point	DP-95	45° 07.288' N	122° 27.341' W
Drop Point	DP-96	45° 07.280' N	122° 26.429' W
Drop Point	DP-97	45° 06.350' N	122° 27.149' W
Drop Point	DP-98	45° 05.979' N	122° 28.851' W
Drop Point	DP-99	45° 7.77' N	122° 24.51' W
Fire Station		45° 17.148' N	122° 19.996' W
Gate		45° 10.334' N	122° 26.085' W
Gate		45° 14.59' N	122° 9.973' W
Gate		45° 15.099' N	122° 13.79' W
Hazard	Power lines down	45° 11.578' N	122° 12.8' W
Hazard	Road Washed Out	45° 12.657' N	121° 57.323' W
Hazard	Rock Fall	45° 12.838' N	122° 13.945' W
Helispot	H-40	45° 4.67' N	122° 3.437' W
Helispot	H-40	45° 29.139' N	122° 21.252' W
Incident Command Post	Riverside ICP	44° 55.572' N	122° 11.211' W
Repeater	Bagby	44° 57.611' N	121° 58.541' W
Repeater	Low	44° 53.952' N	121° 50.674' W
Repeater	Sisi	45° 13.857' N	122° 02.455' W
Repeater	Tumala	45° 6.233' N	122° 7.288' W
Repeater	Whalehead	45° 09.149' N	122° 35.328' W
Staging Area		45° 18.128' N	122° 20.736' W
Value at Risk	Bagby Hot Springs	44° 56.128' N	122° 10.418' W
Value at Risk	Bull of the Woods Lookout	44° 53.079' N	122° 5.748' W
Value at Risk	Com Tower	45° 0.586' N	122° 20.34' W
Value at Risk	Wood Bridge	45° 12.671' N	121° 57.328' W
Water Source		45° 10.001' N	122° 22.427' W
Water Source		45° 12.232' N	122° 9.024' W



Riverside Transportation & Communication
 ORMHF-000859
 Day Operational Period 9/16/2020
 9/15/2020 16:00
 NAD 1983 UTM Zone 10N



- Bridge
 - Hazard
 - Value at Risk
 - Dip Site
 - Closure
 - Drop Point
 - Fire Station
 - Gate
 - Helispot
 - Repeater
 - Staging Area
 - Water Source
 - Uncontrolled Fire Edge
 - Contained Line
 - Temporary Flight Restriction
 - Road as Completed Line
 - Completed Dozer Line
 - Completed Hand Line
 - Aerial Hazard
 - Event Polygon
 - Wildfire Daily Fire Perimeter
 - Administrative Forest
 - Wilderness
 - Boundary
 - Federal
 - Wilderness
 - Forest Service
 - Bureau of Land Management
 - National Park Service
 - Fish and Wildlife Service Transportation
 - County or Equivalent
 - Event GISSEdit
 - City
 - Mainline
 - Highway
 - Highway or ramp
 - Local connector
 - Local or 4WD road
 - Local
 - Timber Inc Road
 - Highway
 - Airport Point
 - City or Regional Airport
 - Airstrip
 - Primary road
 - Secondary road
 - Local
 - Spur
 - Undrivable

(DIVISION
 [BRANCH