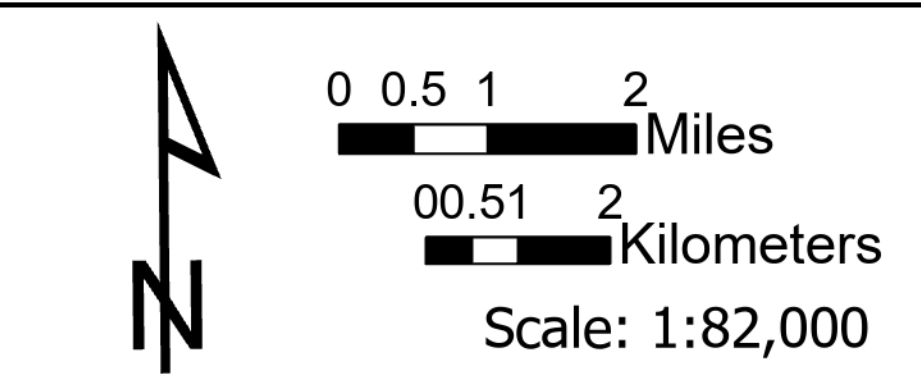


FC Point Type	Label	Latitude	Longitude
Bridge	35 Tons	45° 8.529'	-122° 24.822'
Bridge Out		45° 16.068' N	-122° 18.853'
Camp	Gov. Camp Spike	45° 6.233'	-122° 24.822'
Closure	Santiam Dip	45° 12.426'	-121° 56.925'
Dip Site		44° 46.845'	-122° 39.389'
Dip Site	Scoop Site	45° 7.261'	-121° 47.139'
Drop Point	DP-10	45° 10.341' N	-122° 26.069'
Drop Point	DP-100	45° 9.663'	-121° 53.655'
Drop Point	DP-102	45° 9.375'	-121° 53.091'
Drop Point	DP-105	45° 6.764'	-121° 48.372'
Drop Point	DP-11	45° 9.564'	-122° 20.48'
Drop Point	DP-110	45° 4.713'	-121° 55.3'
Drop Point	DP-13	45° 10.21'	-122° 18.826'
Drop Point	DP-15	45° 10.998'	-122° 18.559'
Drop Point	DP-2	45° 8.552'	-122° 24.844'
Drop Point	DP-30	45° 12.293' N	-122° 21.789'
Drop Point	DP-4	45° 9.233'	-122° 24.984'
Drop Point	DP-50	45° 16.869' N	-122° 20.162'
Drop Point	DP-51	45° 17.695'	-122° 20.636'
Drop Point	DP-52	45° 15.558'	-122° 17.028'
Drop Point	DP-55	45° 13.415'	-122° 14.616'
Drop Point	DP-57	45° 12.745'	-122° 12.774'
Drop Point	DP-6	45° 9.242'	-122° 27.948'
Drop Point	DP-60	45° 12.184'	-122° 9.571'
Drop Point	DP-61	45° 12.268'	-122° 9.104'
Drop Point	DP-62	45° 13.098'	-122° 8.526'
Drop Point	DP-63	45° 14.601'	-122° 7.156'
Drop Point	DP-64	45° 11.68'	-122° 8.241'
Drop Point	DP-65	45° 12.210' N	-122° 7.946'
Drop Point	DP-66	45° 12.454'	-122° 6.394'
Drop Point	DP-67	45° 12.603'	-122° 3.752'
Drop Point	DP-69	45° 13.216'	-122° 1.451'
Drop Point	DP-7	45° 7.198'	-122° 23.232'
Drop Point	DP-71	45° 13.873'	-122° 0.625'
Drop Point	DP-72	45° 13.603'	-121° 59.859'
Drop Point	DP-73	45° 12.895'	-121° 59.403'
Drop Point	DP-74	45° 12.699'	-121° 58.672'
Drop Point	DP-75	45° 12.711'	-121° 57.438'
Drop Point	DP-78	45° 0.195'	-122° 20.479'
Drop Point	DP-79	45° 0.858'	-122° 22.445'
Drop Point	DP-80	45° 02.586' N	-122° 23.702'
Drop Point	DP-81	45° 1.09'	-122° 24.845'
Drop Point	DP-82	45° 03.603' N	-122° 25.144'
Drop Point	DP-83	45° 5.216'	-122° 28.983'
Drop Point	DP-84	45° 04.672' N	-122° 26.687'
Drop Point	DP-86	45° 4.544'	-122° 28.373'
Drop Point	DP-87	45° 04.872' N	-122° 29.119'
Drop Point	DP-89	45° 5.689'	-122° 27.308'
Drop Point	DP-9	45° 7.621'	-122° 23.153'
Drop Point	DP-90	45° 08.704' N	-122° 33.806'
Drop Point	DP-94	45° 07.565' N	-122° 27.949'
Drop Point	DP-95	45° 07.286' N	-122° 27.341'
Drop Point	DP-96	45° 7.28'	-122° 26.429'
Drop Point	DP-97	45° 6.35'	-122° 27.149'
Drop Point	DP-98	45° 05.979' N	-122° 28.851'
Drop Point	DP-99	45° 7.77'	-122° 24.51'
Fire Station		45° 12.148' N	-122° 18.983'
Fire Station		45° 10.334' N	-122° 26.085'
Gate		45° 14.59'	-122° 9.973'
Gate	Road Washed Out	45° 15.099'	-122° 13.79'
Hazard	Road Washed Out	45° 12.657'	-121° 57.323'
Hazard	Rock Fall	45° 12.838'	-122° 13.945'
Hellspot	H-40	45° 12.38'	-122° 6.624'

Riverside Transportation & Communication  
 ORMHF-000859  
 Day Operational Period 9/18/2020  
 NAD 1983 UTM Zone 10N



- Drop Point
- Staging Area
- Administrative Forest
- Event\_GISSEdit
- Bridge
- Water Source
- Wilderness
- Timber Inc Road
- Hazard
- Contained Line
- Wilderness
- Forest Service
- Spur
- Value at Risk
- Uncontrolled Fire Edge
- Wilderness
- Bureau of Land Management
- Undrivable
- Dip Site
- Contained Line
- National Park Service
- City
- Gate
- Aerial Hazard
- Fish and Wildlife Service
- Highway or ramp
- Incident Command Post
- Event Polygon
- Wilderness
- Primary road
- Repeater
- Wildfire Daily Fire Perimeter
- County or Equivalent
- Local connector
- Airport Point
- Local or 4WD road
- Local
- Airstrip

) DIVISION  
) BRANCH