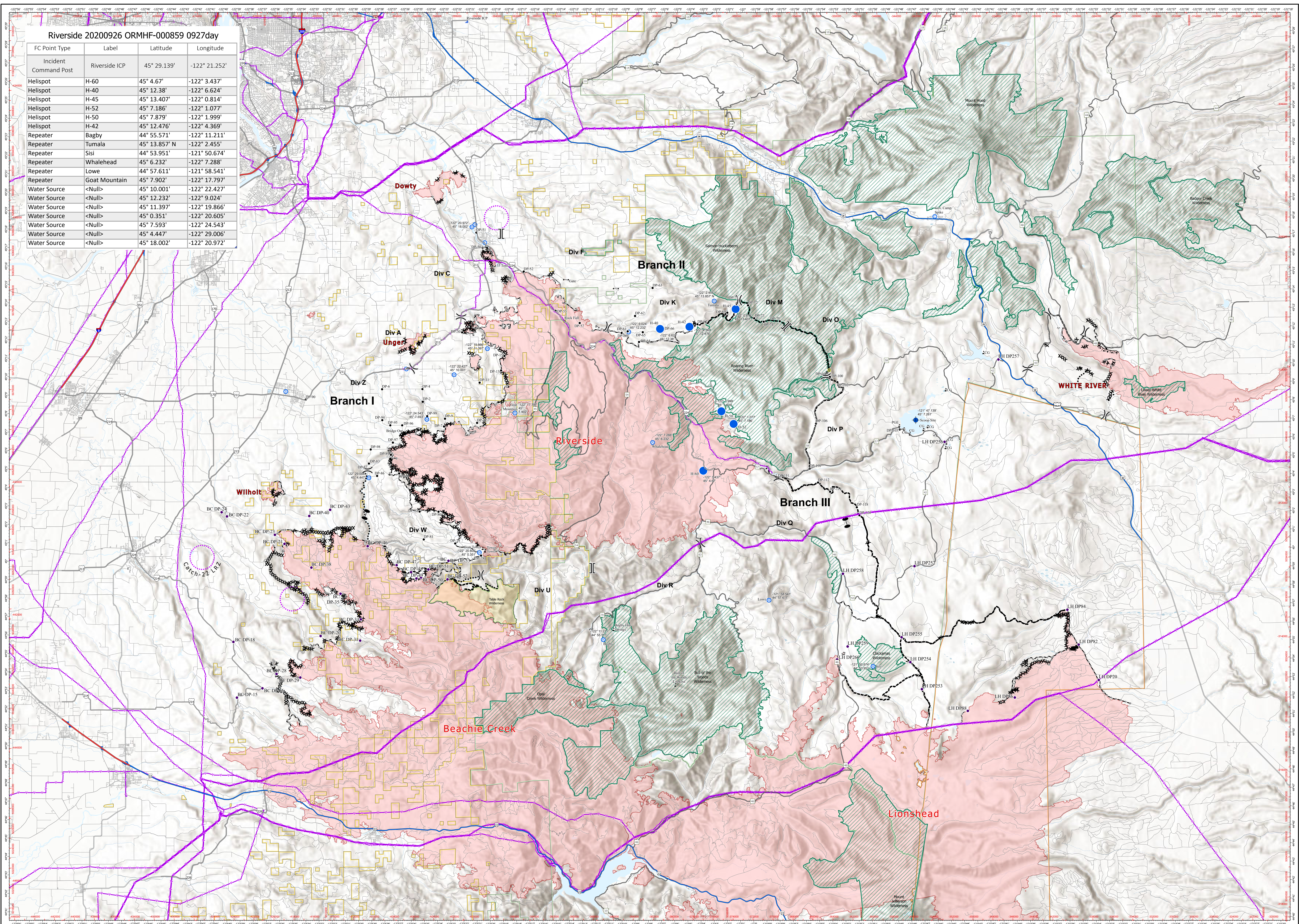


Riverside 20200926 ORMHF-000859 0927day

FC Point Type	Label	Latitude	Longitude
Incident Command Post	Riverside ICP	45° 29.139'	-122° 21.252'
Helispot	H-60	45° 4.67'	-122° 3.437'
Helispot	H-40	45° 12.38'	-122° 6.624'
Helispot	H-45	45° 13.407'	-122° 0.814'
Helispot	H-52	45° 7.186'	-122° 1.077'
Helispot	H-50	45° 7.879'	-122° 1.999'
Helispot	H-42	45° 12.476'	-122° 4.369'
Repeater	Bagby	44° 55.571'	-122° 11.211'
Repeater	Tumala	45° 13.857' N	-122° 2.455'
Repeater	Sisi	44° 53.951'	-121° 50.674'
Repeater	Whalehead	45° 6.232'	-122° 7.288'
Repeater	Low	44° 57.611'	-121° 58.541'
Repeater	Goat Mountain	45° 7.902'	-122° 17.797'
Water Source	<Null>	45° 10.001'	-122° 22.427'
Water Source	<Null>	45° 12.232'	-122° 9.024'
Water Source	<Null>	45° 11.397'	-122° 19.866'
Water Source	<Null>	45° 0.351'	-122° 20.605'
Water Source	<Null>	45° 7.593'	-122° 24.543'
Water Source	<Null>	45° 4.447'	-122° 29.006'
Water Source	<Null>	45° 18.002'	-122° 20.972'



Riverside Incident Air Operations  
 ORMHF-000859  
 Day Operational Period 9/27/2020  
 Scale: 1:109,000



- Aerial Hazard - Power Lines
- Zone Break
- Division Break
- Branch Break
- Bridge
- Internet Access
- Hazard
- Value at Risk
- Dip Site
- Camp
- Gate
- Lookout
- Repeater
- Helispot
- Staging Area
- Fire Station
- Incident Command Post
- Water Source
- Completed Burnout
- Access or Improved Road
- UAS Launch and Recovery Zone
- Road as Completed Line
- Line Break Completed or Incomplete
- Completed Dozer Line
- Completed Hand Line
- Proposed Dozer Line
- Fire Break Planned or Incomplete
- Planned Fire Line
- Planned Secondary Line
- Wildfire Daily Fire Perimeter
- Wilderness
- BLM - Wilderness

