

Suppression Repair

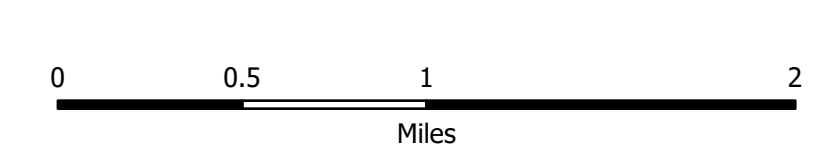
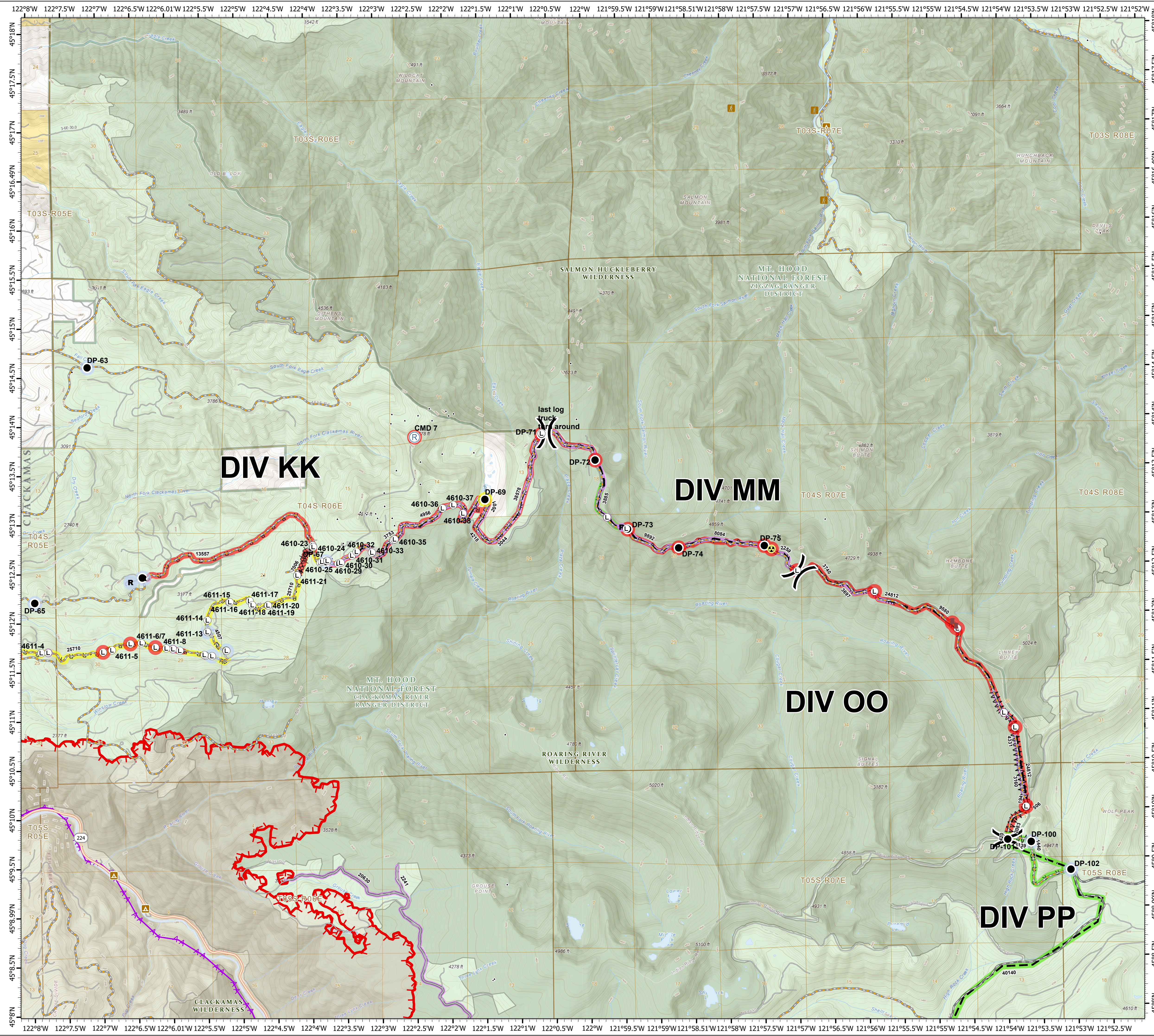
Beachie Creek
ORWIF-200299
Riverside
ORMHF-000859
10/08/20
Page: 2

- Repair Point Status**
- Completed - Inspected
 - In Progress
 - Repair Needed
 - No Repair Needed
 - Other - See Comments
 - Unknown
- Repair Line Status**
- Completed - Inspected
 - In Progress
 - Repair Needed
 - Unknown
- Legend**
- Landing or Log Deck
 - Repeater
 - Resource Location
 - Division Break
 - Completed Dozer Line
 - Road as Completed Line
 - Access or Improved Road
 - Line Break Completed
 - Planned Fire Line
 - Aerial Hazard
 - Uncontrolled Fire Edge
 - Wildfire Daily Fire Perimeter
 - Structures
 - Dozer Push
 - Hazard
 - Trailhead
 - State Highway
 - Major road
 - Intermediate road
 - Minor road
 - Decommissioned or Closed
 - Rivers and Streams
 - Lake, Pond or Reservoir
 - County Boundary
 - Ranger District Boundaries
 - Forest Service Wilderness Area
 - Bureau of Land Management
 - U.S. Forest Service
 - Private/Unknown

FC Point Type	Repair Status	Repair Comments	Label	FC Point Type	Repair Status	Repair Comments	Label
Dozer Push	Repair Needed	18 inch thick slash lightly scattered here where soil is exposed. Lin kyan	4610-25	Landing or Log Deck	Completed - Inspected		4610-25
Dozer Push	Repair Needed	18 inch thick slash scattered slash on top of exposed soil. In kyan	4610-26	Landing or Log Deck	Completed - Inspected		4610-26
Drop Point	Completed - Inspected		DP-101	Landing or Log Deck	Completed - Inspected		4610-31
Drop Point	In Progress		DP-69	Landing or Log Deck	Completed - Inspected		4610-32
Drop Point	No Repair Needed		DP-100	Landing or Log Deck	Completed - Inspected		4610-35
Drop Point	No Repair Needed		DP-102	Landing or Log Deck	Completed - Inspected		4610-36
Drop Point	No Repair Needed		DP-43	Landing or Log Deck	Completed - Inspected		4610-37
Drop Point	No Repair Needed		DP-65	Landing or Log Deck	Completed - Inspected		4610-28
Drop Point	No Repair Needed		DP-66	Landing or Log Deck	Completed - Inspected		4610-38
Drop Point	No Repair Needed		DP-47	Landing or Log Deck	Completed - Inspected		4611-14
Drop Point	Repair Needed		DP-44	Landing or Log Deck	Completed - Inspected		4611-15
Drop Point	Repair Needed		DP-71	Landing or Log Deck	Completed - Inspected		4611-16
Drop Point	Repair Needed		DP-72	Landing or Log Deck	Completed - Inspected		4611-17
Drop Point	Repair Needed		DP-73	Landing or Log Deck	Completed - Inspected		4611-18
Drop Point	Repair Needed		DP-74	Landing or Log Deck	Completed - Inspected		4611-19
Drop Point	Repair Needed		DP-75	Landing or Log Deck	Completed - Inspected		4611-20
Hazard	Repair Needed	waterbar and divert sweep away from failure. cutbank reworking.	4611-21	Landing or Log Deck	Completed - Inspected		4611-21
Landing or Log Deck			4611-4	Landing or Log Deck	Completed - Inspected		4611-4
Landing or Log Deck			4611-8	Landing or Log Deck	Completed - Inspected		4611-8
Landing or Log Deck			4611-9	Landing or Log Deck	Completed - Inspected		4611-9
Landing or Log Deck			4610-23	Landing or Log Deck	Completed - Inspected		4610-23
Landing or Log Deck			4610-24	Landing or Log Deck	Completed - Inspected		4610-24

FC Line Type	Repair Status	Repair Comments	Length Feet
Road as Completed Line	Unknown		2259
Road as Completed Line	Unknown		3044
Road as Completed Line	Repair Needed	remove masticator debris from ditches and culvert, grade road for drainage and waterbar, remove berm on shoulder scatter large slash accumulation	3697
Road as Completed Line	Repair Needed	Light chipping needed	420
Road as Completed Line	Repair Needed		2001
Road as Completed Line	Repair Needed	Road grading, remove berms, repair cut and fill slopes (marked separately), and chipping - Suing	3740
Road as Completed Line	Repair Needed		3753
Road as Completed Line	Repair Needed		4218
Road as Completed Line	Repair Needed	Needs grading of berm caused by debris. Masticator edge needs follow up hand cutting (stems were cut too long).	4956
Road as Completed Line	Repair Needed	Operations did not repair road. Suppression activities did not occur with heavy machinery. READ Kidwell 10/6/20	9892
Road as Completed Line	Repair Needed	4610 segment 2 - Begin grading to remove berm on roadside from tracked equipment and waterbar, begin slash removal from drainage features, barricade light grading, 4610 brushing and ruts - road prism needs brushed, ditches pulled and graded to remove ruts and have proper drainage. Will require spot rock, starts at 150 spur, this segment has worst rutting	13557
Road as Completed Line	In Progress	excavator cleaning ditch. READ Kidwell 10-6	4507
Road as Completed Line	In Progress	slash, roadways, decompanction by excavator in progress. ditch at start along 4611 will be reestablished. READ Kidwell 10-6	7006
Road as Completed Line	In Progress	Excavator cleaned ditch along road completed. As excavator walks out it will need to knock down the small berms that will prevent water on road from entering ditch. Areas of expose dirt along areas of ditch repair. Most of these exposed dirt areas drain into ditch release culverts, little risk of sediment entering the streams below road. Evaluate after rain event in a couple days to determine if sediment traps will be needed over winter. READ Kidwell 10/6/20	25710
Road as Completed Line	Completed - Inspected	Sweeping of debris and light chipping need at intersection of DP 102	

FC Line Type	Repair Status	Repair Comments	Length Feet
Road as Completed Line	Completed - Inspected	Sweeping of debris	1440
Road as Completed Line	Completed - Inspected	remove berms on downhill side to allow drainage on road. Installing waterbars where needed for drainage, cleaning culverts, and ditches. If drainage of road or culvert is functional waterbars are not required. READ Kidwell 10/6/2020	3885
Planned Fire Line	Unknown		8084
Planned Fire Line	Unknown		38578
Planned Fire Line	Repair Needed	Road grading, remove berms, repair cut and fill slopes (marked separately), and chipping - Suing	24812
Planned Fire Line	Completed - Inspected	Chipping needed throughout NF 58 and entry to NF 5830 and NF 150. Crews needed to sweep debris.	40140
Other	Repair Needed	Remove slash in ditch roadside.	
Line Break Completed	Unknown		3160
Line Break Completed	Unknown		4331
Line Break Completed	Repair Needed	Logs in ditch need to be removed. Chip smaller material. Berms need to be knocked down. Rocky debris behind shoulder needs additional repair	2083
Line Break Completed	Completed - Inspected	Light chipping and sweeping needed	1139
Completed Dozer Line	Repair Needed	Dozer line needs significant repair. Follow decom with slash and water bars.	
Completed Dozer Line	Repair Needed	rehab reestablish foot trail	
Completed Dozer Line	Repair Needed	Pull in berms, may not be needed until log deck is removed	194
Completed Dozer Line	Repair Needed		506
Access or Improved Road	Unknown		2241
Access or Improved Road	Unknown		20630



1:33,000 - 10/7/2020 2259
Acres from GIS
North American 1983 Datum, LatLong Grid

