

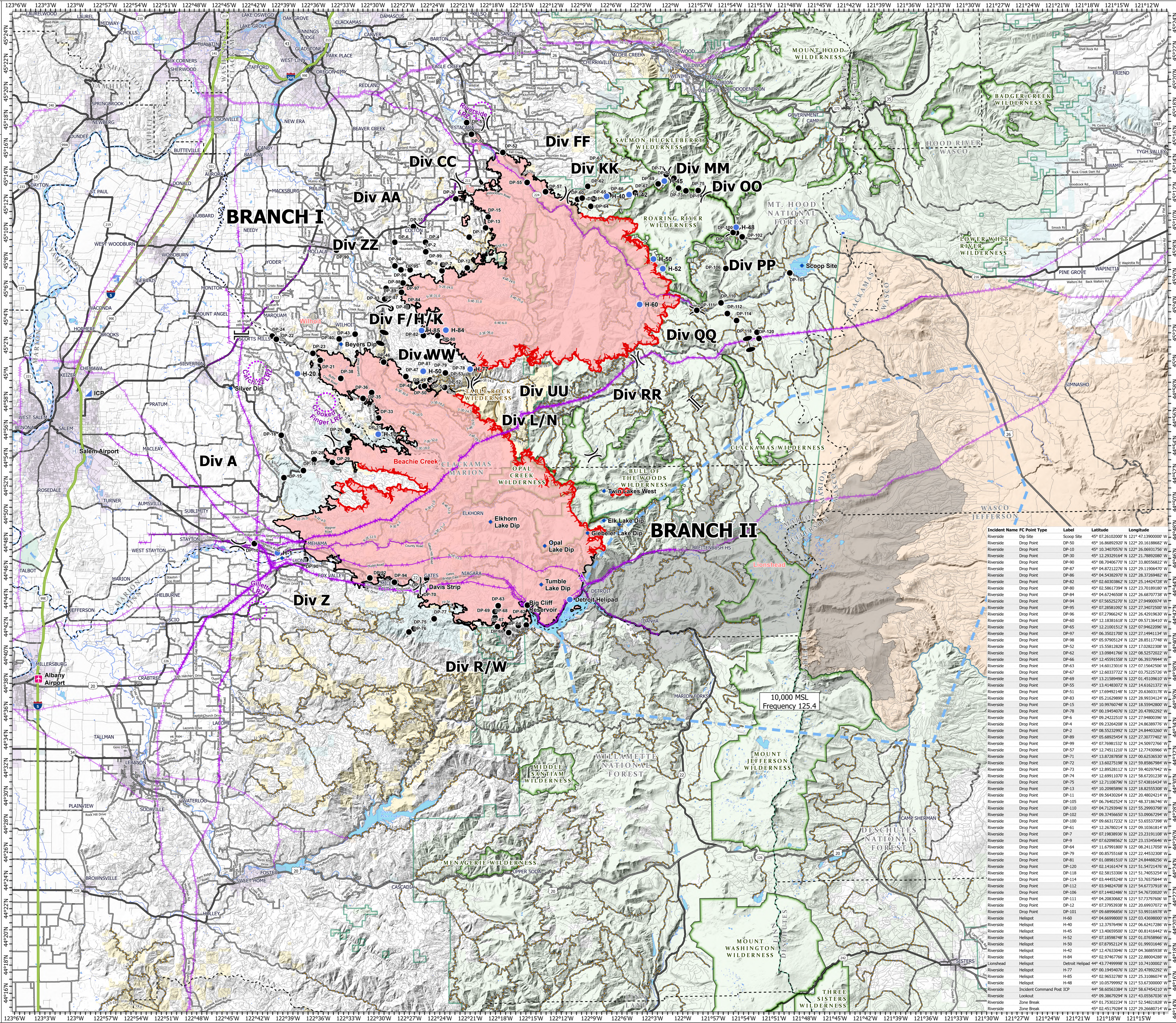
Air Ops

Beachie Creek
ORWIF-200299
Riverside
ORMHF-000859
10/11/20

- Mine Waste Aerial Avoidance
- Wildfire Daily Fire Perimeter
- Aerial Hazard
- Airstrip or Airport
- Dip Site
- Drop Point
- Helibase
- Helipoint
- Incident Command Post
- Lookout
- Zone Break
- Division Break
- Branch Break
- Uncontrolled Fire Edge
- Contained Line
- Aerial Hazard
- UAS Launch and Recovery Zone
- Other Fire Perimeters
- Interstate
- US Highway
- State Highway
- County Road
- Major road
- Intermediate road
- Minor road
- County Boundary
- FS Wilderness
- BLM Wilderness
- USDA-FS Forests
- City Limits
- Bureau of Land Management
- U.S. Forest Service
- U.S. Fish and Wildlife Service
- Bureau of Indian Affairs
- Other Federal
- State
- Local Government
- Private/Unknown

Incident Name	FC Point Type	Label	Latitude	Longitude
Beachie Creek	Aerial Hazard	Albany Airport	44° 45.34962306° N	122° 09.54140058° W
Beachie Creek	Airstrip or Airport	Opal Lake Dip	44° 42.59432902° N	122° 13.91850599° W
Beachie Creek	Dip Site	Elkhorn Lake Dip	44° 49.33832760° N	122° 18.57785894° W
Beachie Creek	Dip Site	Gibbler Lake Dip	44° 48.49483278° N	122° 13.5805534° W
Beachie Creek	Dip Site	Elk Lake Dip	44° 49.35328274° N	122° 07.25985522° W
Beachie Creek	Dip Site	Dunkan Lake Dip	44° 49.06632902° N	122° 13.91850599° W
Beachie Creek	Dip Site	Big Cliff Reservoir	44° 43.33615338° N	122° 15.20349588° W
Beachie Creek	Dip Site	Santiam Dip	44° 46.84466507° N	122° 39.38868030° W
Beachie Creek	Dip Site	Silver Dip	44° 58.92419132° N	122° 43.03251036° W
Beachie Creek	Dip Site	Beyers Dip	45° 02.01853374° N	122° 33.38640744° W
Beachie Creek	Dip Site	Twin Lakes West	44° 51.44516648° N	122° 07.21420816° W
Beachie Creek	Dip Site	Twin Lakes East	44° 51.34858188° N	122° 06.56738882° W
Beachie Creek	Drop Point	DP-20	44° 55.89032664° N	122° 32.76860552° W
Beachie Creek	Drop Point	DP-16	44° 53.07349498° N	122° 32.32120902° W
Beachie Creek	Drop Point	DP-18	44° 55.59430200° N	122° 39.41610796° W
Beachie Creek	Drop Point	DP-15	44° 52.57184604° N	122° 39.18469202° W
Beachie Creek	Drop Point	DP-10	44° 47.89265272° N	122° 14.2026366° W
Beachie Creek	Drop Point	DP-95	44° 45.35145096° N	122° 24.98833284° W
Beachie Creek	Drop Point	DP-29	44° 45.75155198° N	122° 42.71572386° W
Beachie Creek	Drop Point	DP-24	45° 02.62132770° N	122° 40.27265070° W
Beachie Creek	Drop Point	DP-43	45° 02.72867047° N	122° 31.97840112° W
Beachie Creek	Drop Point	DP-21	45° 00.8917134° N	122° 35.47946010° W
Beachie Creek	Drop Point	DP-22	45° 02.39939652° N	122° 39.86656146° W
Beachie Creek	Drop Point	DP-70	44° 44.70538168° N	122° 25.30554174° W
Beachie Creek	Drop Point	DP-19	44° 41.80110732° N	122° 26.28896946° W
Beachie Creek	Drop Point	DP-77	44° 42.49682658° N	122° 24.27633856° W
Beachie Creek	Drop Point	DP-29	44° 53.64486198° N	122° 32.7204999° W
Beachie Creek	Drop Point	DP-28	44° 53.84532612° N	122° 36.14086662° W
Beachie Creek	Drop Point	DP-76	44° 41.57531868° N	122° 26.79302628° W
Beachie Creek	Drop Point	DP-31	44° 50.7782783° N	122° 26.68494945° W
Beachie Creek	Drop Point	DP-38	44° 59.6023050° N	122° 33.43558752° W
Beachie Creek	Drop Point	DP-35	44° 58.1249516° N	122° 31.22388296° W
Beachie Creek	Drop Point	DP-51	44° 58.62832992° N	122° 29.74889968° W
Beachie Creek	Drop Point	DP-46	45° 00.74188232° N	122° 29.13026010° W
Beachie Creek	Drop Point	DP-52	44° 58.751759° N	122° 33.2351° W
Beachie Creek	Drop Point	DP-40	45° 02.4009078° N	122° 33.5785268° W
Beachie Creek	Drop Point	DP-23	45° 01.38844296° N	122° 36.21110538° W
Beachie Creek	Drop Point	DP-44	44° 59.70176348° N	122° 42.0780104° W
Beachie Creek	Drop Point	DP-64	44° 42.00032748° N	122° 15.10885500° W
Beachie Creek	Drop Point	DP-52	44° 43.40732760° N	122° 14.97885528° W
Beachie Creek	Drop Point	DP-48	44° 59.33458898° N	122° 32.83427288° W
Beachie Creek	Drop Point	DP-49	44° 58.97254878° N	122° 25.42140312° W
Beachie Creek	Drop Point	DP-50	44° 59.02666998° N	122° 32.7204999° W
Beachie Creek	Drop Point	DP-51	44° 59.45652198° N	122° 24.50959302° W
Beachie Creek	Drop Point	DP-53	44° 59.93829698° N	122° 22.97194998° W
Beachie Creek	Drop Point	DP-54	44° 45.10533378° N	122° 26.20341394° W
Beachie Creek	Drop Point	DP-66	44° 41.47422882° N	122° 16.86539262° W
Beachie Creek	Drop Point	DP-45	44° 41.96705868° N	122° 15.89494116° W
Beachie Creek	Drop Point	DP-67	44° 41.81137186° N	122° 17.97019146° W
Beachie Creek	Drop Point	DP-68	44° 42.55575132° N	122° 18.21588312° W
Beachie Creek	Drop Point	DP-69	44° 43.87958898° N	122° 21.8185838° W
Beachie Creek	Drop Point	DP-92	44° 45.41732622° N	122° 30.6478810° W
Beachie Creek	Drop Point	DP-63	44° 43.38788882° N	122° 17.89965666° W
Beachie Creek	Drop Point	DP-36	44° 46.58862560° N	122° 30.5982708° W
Beachie Creek	Drop Point	DP-44	44° 44.76032670° N	122° 25.26085714° W
Beachie Creek	Drop Point	DP-45	44° 54.49032778° N	122° 30.12096448° W
Beachie Creek	Drop Point	DP-47	44° 47.23543778° N	122° 39.84956878° W
Beachie Creek	Drop Point	H-30	45° 00.07132296° N	122° 25.17946602° W
Beachie Creek	Drop Point	H-20	44° 50.94479718° N	122° 37.0211146° W
Beachie Creek	Drop Point	H-10	44° 55.62869904° N	122° 29.71275174° W
Beachie Creek	Drop Point	H-40	44° 58.60633884° N	122° 58.67454210° W
Beachie Creek	Lookout	Lookout	44° 47.7941132° N	122° 12.50206386° W
Beachie Creek	Lookout	Lookout	44° 43.77499998° N	122° 10.74100002° W

0 1 2 Miles
0 1 2 Kilometers



Incident Name	FC Point Type	Label	Latitude	Longitude	
Riverside	Dip Site	Scoop Site	45° 07.26100000° N	121° 47.13900000° W	
Riverside	Drop Point	DP-50	45° 16.86952920° N	122° 20.16188662° W	
Riverside	Drop Point	DP-10	45° 10.34070576° N	122° 26.06931736° W	
Riverside	Drop Point	DP-30	45° 12.29329164° N	122° 21.78892080° W	
Riverside	Drop Point	DP-90	45° 08.70466770° N	122° 33.80568222° W	
Riverside	Drop Point	DP-87	45° 04.87122720° N	122° 29.11906470° W	
Riverside	Drop Point	DP-88	45° 04.54382970° N	122° 28.37294982° W	
Riverside	Drop Point	DP-82	45° 02.60328622° N	122° 25.14442728° W	
Riverside	Drop Point	DP-80	45° 02.58617394° N	122° 23.70189182° W	
Riverside	Drop Point	DP-84	45° 04.67246508° N	122° 26.68707738° W	
Riverside	Drop Point	DP-94	45° 07.56525270° N	122° 27.94900974° W	
Riverside	Drop Point	DP-95	45° 07.28581092° N	122° 27.34072500° W	
Riverside	Drop Point	DP-96	45° 07.2966242° N	122° 26.42919630° W	
Riverside	Drop Point	DP-60	45° 12.183816816° N	122° 29.571364124° W	
Riverside	Drop Point	DP-65	45° 12.2101512° N	122° 07.94622096° W	
Riverside	Drop Point	DP-97	45° 06.35021700° N	122° 27.14941134° W	
Riverside	Drop Point	DP-98	45° 05.9705124° N	122° 28.8511748° W	
Riverside	Drop Point	DP-52	45° 15.5812828° N	122° 17.02823208° W	
Riverside	Drop Point	DP-62	45° 13.08941766° N	122° 08.52572022° W	
Riverside	Drop Point	DP-66	45° 12.45591558° N	122° 08.28379944° W	
Riverside	Drop Point	DP-63	45° 14.6013016° N	122° 07.15642506° W	
Riverside	Drop Point	DP-67	45° 12.60337722° N	122° 03.7525276° W	
Riverside	Drop Point	DP-69	45° 13.21589496° N	122° 01.45109610° W	
Riverside	Drop Point	DP-55	45° 13.41483072° N	122° 14.61621372° W	
Riverside	Drop Point	DP-51	45° 17.69491876° N	122° 20.69393788° W	
Riverside	Drop Point	DP-83	45° 05.21628899° N	122° 28.29134124° W	
Riverside	Drop Point	DP-15	45° 10.99760748° N	122° 18.55942800° W	
Riverside	Drop Point	DP-78	45° 00.19454076° N	122° 20.47892292° W	
Riverside	Drop Point	DP-6	45° 09.2422510° N	122° 27.94800396° W	
Riverside	Drop Point	DP-4	45° 09.23264208° N	122° 24.86389774° W	
Riverside	Drop Point	DP-2	45° 08.55224838° N	122° 24.94482368° W	
Riverside	Drop Point	DP-89	45° 05.68925454° N	122° 27.30777402° W	
Riverside	Drop Point	DP-99	45° 07.9681532° N	122° 24.50972766° W	
Riverside	Drop Point	DP-71	45° 12.7451210° N	122° 12.77430666° W	
Riverside	Drop Point	DP-72	45° 13.60271598° N	122° 19.85897984° W	
Riverside	Drop Point	DP-73	45° 12.89528818° N	122° 19.40237964° W	
Riverside	Drop Point	DP-74	45° 12.69911076° N	122° 08.67262338° W	
Riverside	Drop Point	DP-75	45° 12.71108796° N	122° 17.543816434° W	
Riverside	Drop Point	DP-13	45° 10.2085896° N	122° 18.8255336° W	
Riverside	Drop Point	DP-11	45° 09.56430264° N	122° 20.48024214° W	
Riverside	Drop Point	DP-105	45° 06.76402524° N	122° 14.83716474° W	
Riverside	Drop Point	DP-60	45° 04.37991898° N	122° 08.24117028° W	
Riverside	Drop Point	DP-102	45° 09.37456650° N	122° 53.09062796° W	
Riverside	Drop Point	DP-100	45° 09.66317322° N	122° 53.65537396° W	
Riverside	Drop Point	DP-61	45° 12.26780214° N	122° 09.10361814° W	
Riverside	Drop Point	DP-7	45° 07.19838936° N	122° 23.23191108° W	
Riverside	Drop Point	DP-9	45° 07.62098562° N	122° 23.15345646° W	
Riverside	Drop Point	DP-64	45° 11.97991898° N	122° 08.24117028° W	
Riverside	Drop Point	DP-75	45° 00.85751568° N	122° 22.44523206° W	
Riverside	Drop Point	DP-81	45° 01.08981510° N	122° 24.84488256° W	
Riverside	Drop Point	DP-120	45° 02.1461474° N	122° 51.54724716° W	
Riverside	Drop Point	DP-118	45° 02.58153306° N	121° 51.74053254° W	
Riverside	Drop Point	DP-114	45° 03.44452548° N	121° 53.76578844° W	
Riverside	Drop Point	DP-112	45° 03.94602498° N	121° 54.67717918° W	
Riverside	Drop Point	DP-106	45° 07.14024486° N	121° 54.76720202° W	
Riverside	Drop Point	DP-111	45° 04.20833682° N	121° 57.73797606° W	
Riverside	Drop Point	DP-12	45° 07.37953938° N	122° 20.69937072° W	
Riverside	Drop Point	DP-101	45° 09.6996856° N	121° 53.99316978° W	
Riverside	Drop Point	H-60	45° 04.66998000° N	122° 03.43698000° W	
Riverside	Drop Point	H-40	45° 12.37916498° N	122° 06.62417288° W	
Riverside	Drop Point	H-45	45° 13.40659500° N	122° 00.81164442° W	
Riverside	Drop Point	H-52	45° 07.18598748° N	122° 01.07659866° W	
Riverside	Drop Point	H-50	45° 07.87952124° N	122° 01.99931646° W	
Riverside	Drop Point	H-42	45° 12.47633046° N	122° 04.36885938° W	
Riverside	Drop Point	H-84	45° 02.97467766° N	122° 22.88004288° W	
Riverside	Drop Point	Helipoint	Helipoint	45° 01.73499998° N	122° 10.74100002° W
Riverside	Drop Point	Helipoint	Helipoint	45° 00.19454076° N	122° 20.47892292° W
Riverside	Drop Point	Helipoint	Helipoint	45° 02.96532780° N	122° 25.31086074° W
Riverside	Drop Point	Helipoint	Helipoint	45° 10.05799992° N	121° 53.67300000° W
Riverside	Drop Point	Helipoint	Helipoint	44° 58.60633884° N	122° 58.67454210° W
Riverside	Drop Point	Helipoint	Helipoint	45° 09.38679294° N	121° 43.05567036° W
Riverside	Drop Point	Zone Break	Zone Break	45° 01.73499998° N	122° 10.74100002° W
Riverside	Drop Point	Zone Break	Zone Break	45° 02.45179284° N	122° 29.26680714° W