

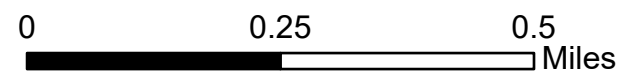
Operations

Steet Mountain

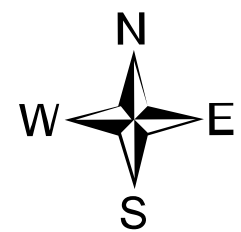
OR952S020279

08/27/20

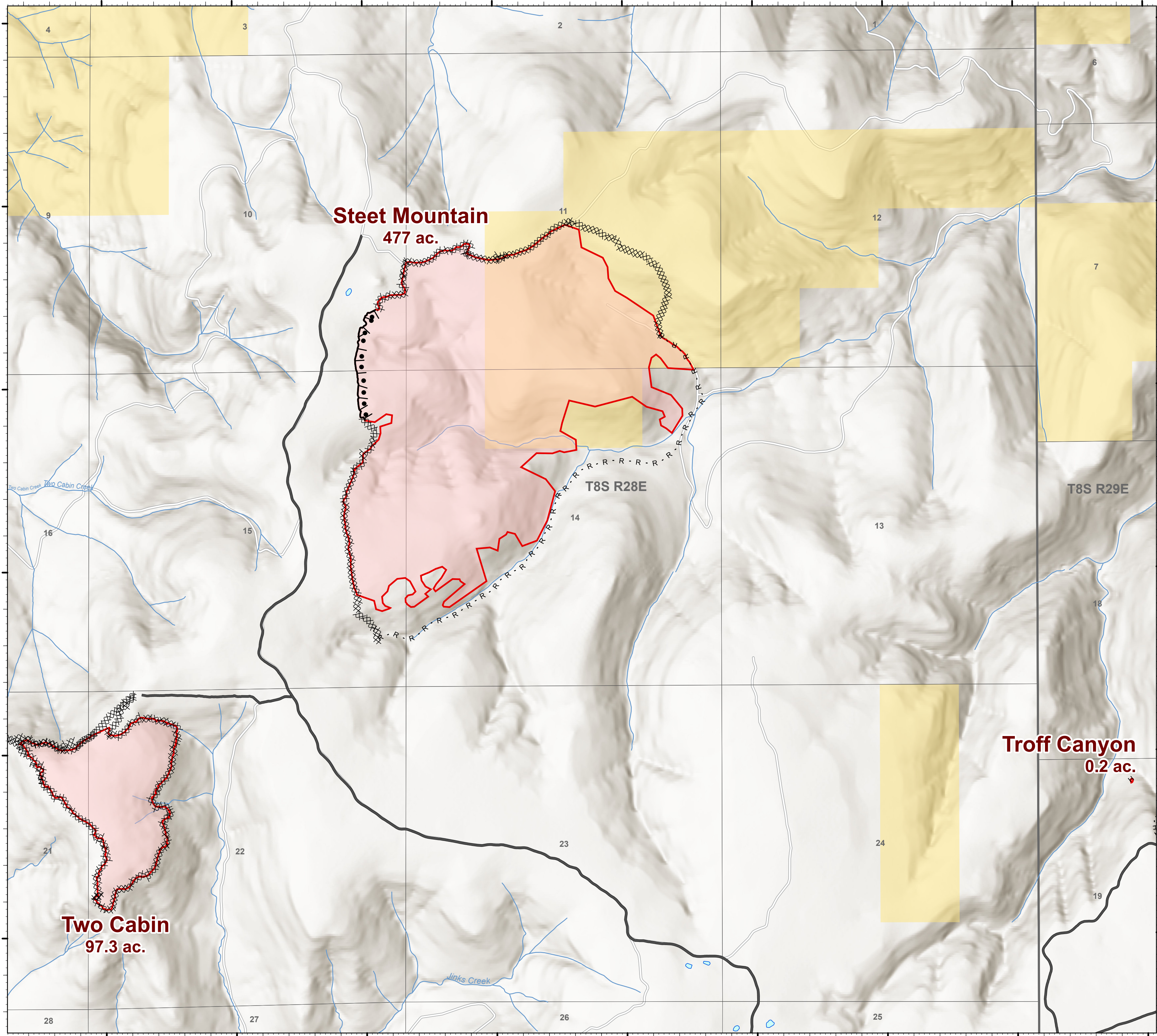
699 acres at 08/26/2020



- Completed Dozer Line
- Completed Hand Line
- Road as Completed Line
- Access Road
- Completed Burnout
- Wildfire Daily Fire Perimeter
- Interstate
- Federal or State highway
- Surfaced Road
- Dirt Road
- Hiking trail
- In UGB
- Highway exit
- Airstrip
- Mainline Rd
- Blocked
- 4wd trail
- Not a road
- Stub/driveway, less than 200ft
- Stream
- PLSS Township
- PLSS Section
- Waterbody
- BLM



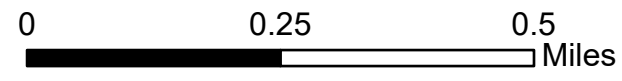
ODF IMT 2
08/26/2020 1907
Acres from GIS
North American 1983 Datum
Lat Long Grid



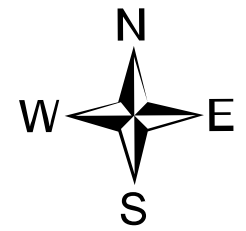
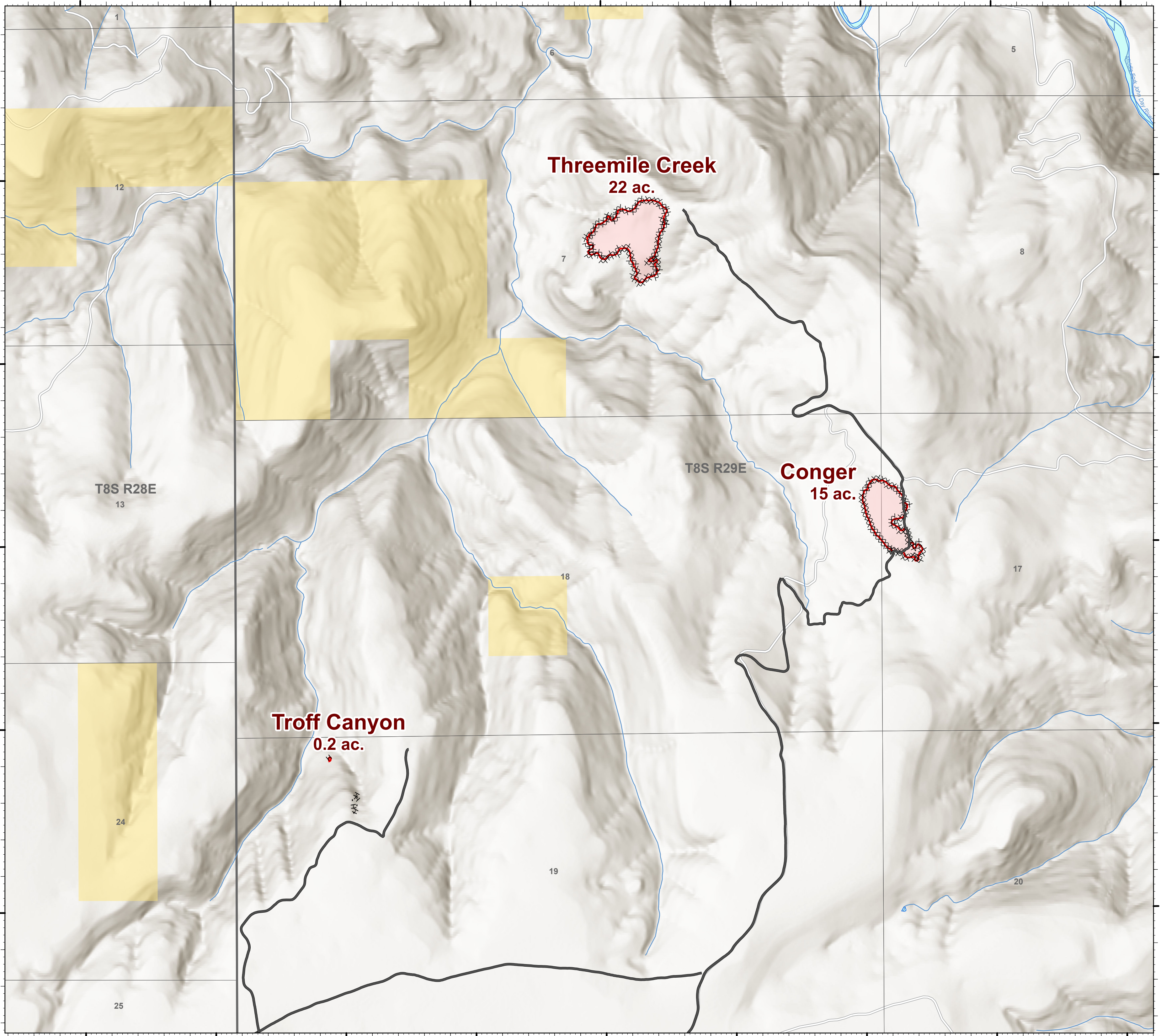
119°20'W

Operations

Steet Mountain
OR952S020279
08/27/20
699 acres at 08/26/2020



- XXXXXX Completed Dozer Line
- H · H · H Completed Hand Line
- Access Road
- Wildfire Daily Fire Perimeter
- Interstate
- Federal or State highway
- Surfaced Road
- - - Dirt Road
- · - · - Hiking trail
- In UGB
- Highway exit
- Airstrip
- Mainline Rd
- Blocked
- 4wd trail
- Not a road
- Stub/driveway, less than 200ft
- Stream
- PLSS Township
- PLSS Section
- Waterbody
- BLM



ODF IMT 2
08/26/2020 1907
Acres from GIS
North American 1983 Datum
Lat Long Grid

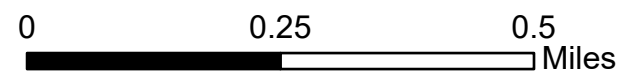
Operations

Steet Mountain

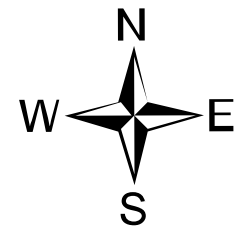
OR952S020279

08/27/20

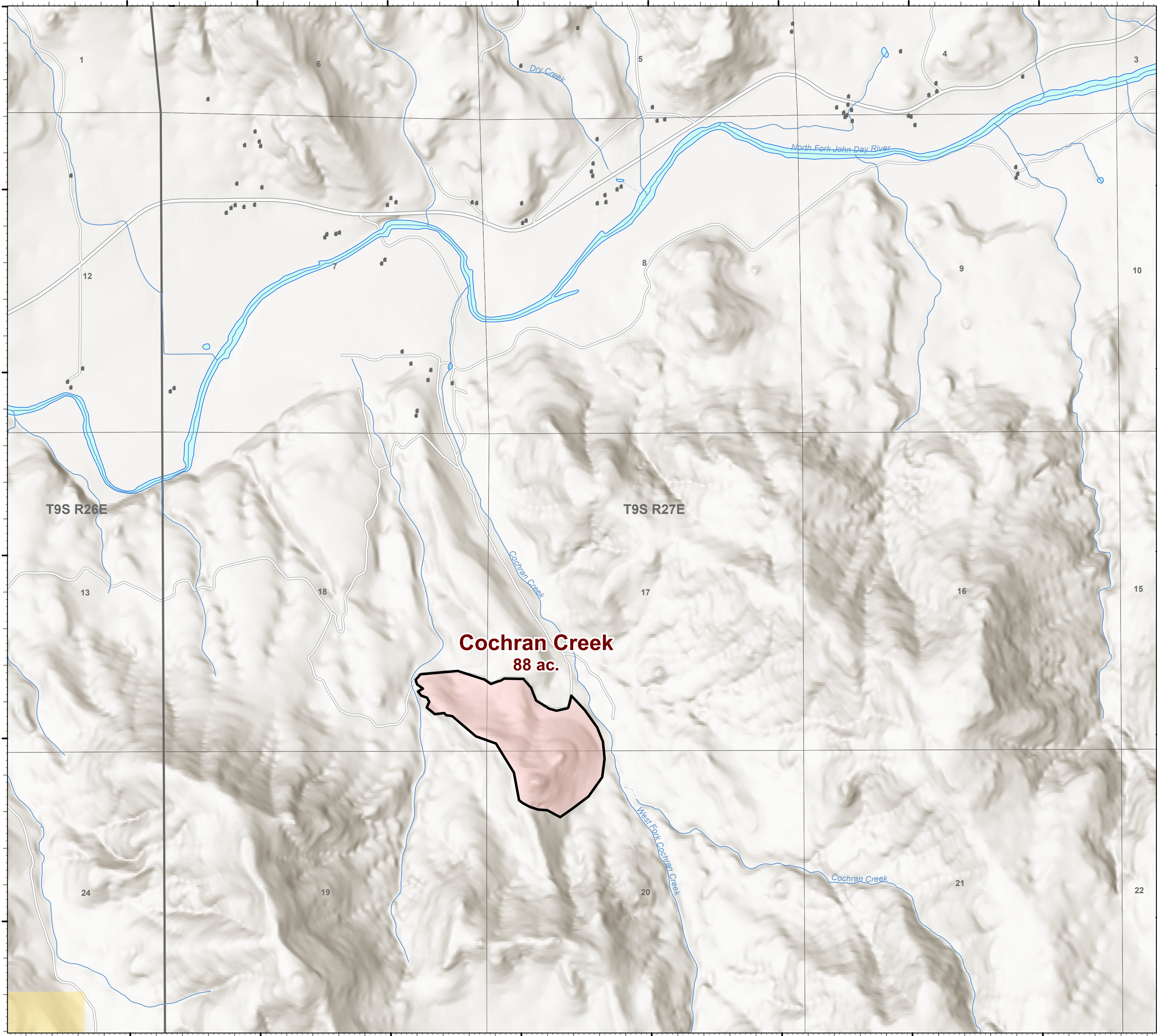
699 acres at 08/26/2020



- Contained Line
- 🔴 Wildfire Daily Fire Perimeter
- Structure
- 🔴 Interstate
- 🖇 Federal or State highway
- Surfaced Road
- - - Dirt Road
- · - · - Hiking trail
- In UGB
- Highway exit
- Airstrip
- Mainline Rd
- Blocked
- 4wd trail
- Not a road
- Stub/driveway, less than 200ft
- 🌊 Stream
- ▭ PLSS Township
- ▭ PLSS Section
- 💧 Waterbody
- 🟡 BLM



ODF IMT 2
08/26/2020 1907
Acres from GIS
North American 1983 Datum
Lat Long Grid



119°30'W