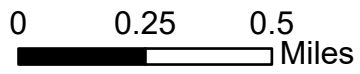
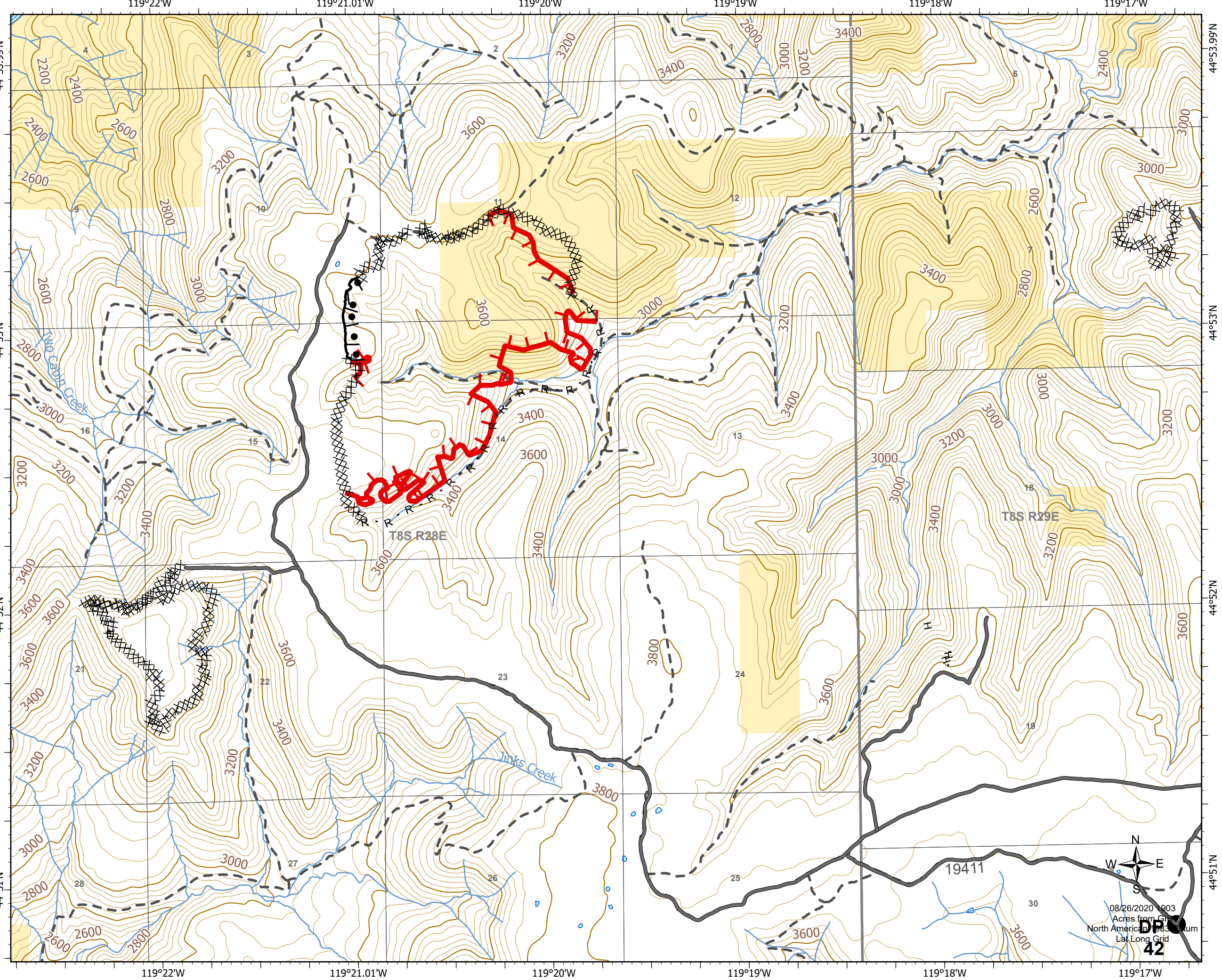
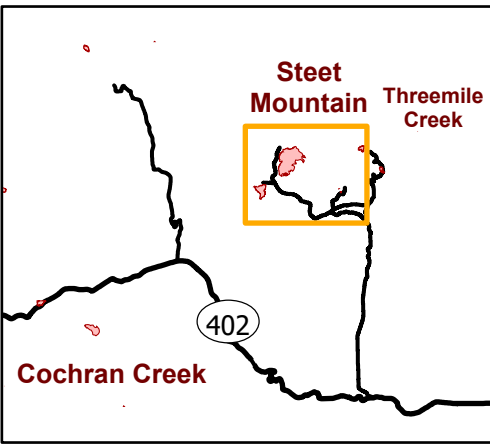


IAP
Steet Mountain
OR952S020279
08/27/2020
total 699 acres on 08/26/2020
IAP Page: Steet Mountain

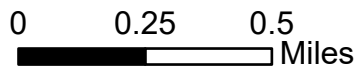


- Drop Point
- Uncontrolled Fire Edge
- Completed Dozer Line
- Completed Hand Line
- Road as Completed Line
- Access Road
- Completed Burnout
- Structure
- Stream
- Surfaced Road
- Dirt Road
- PLSS Township
- PLSS Section
- Waterbody
- Bureau of Land Management

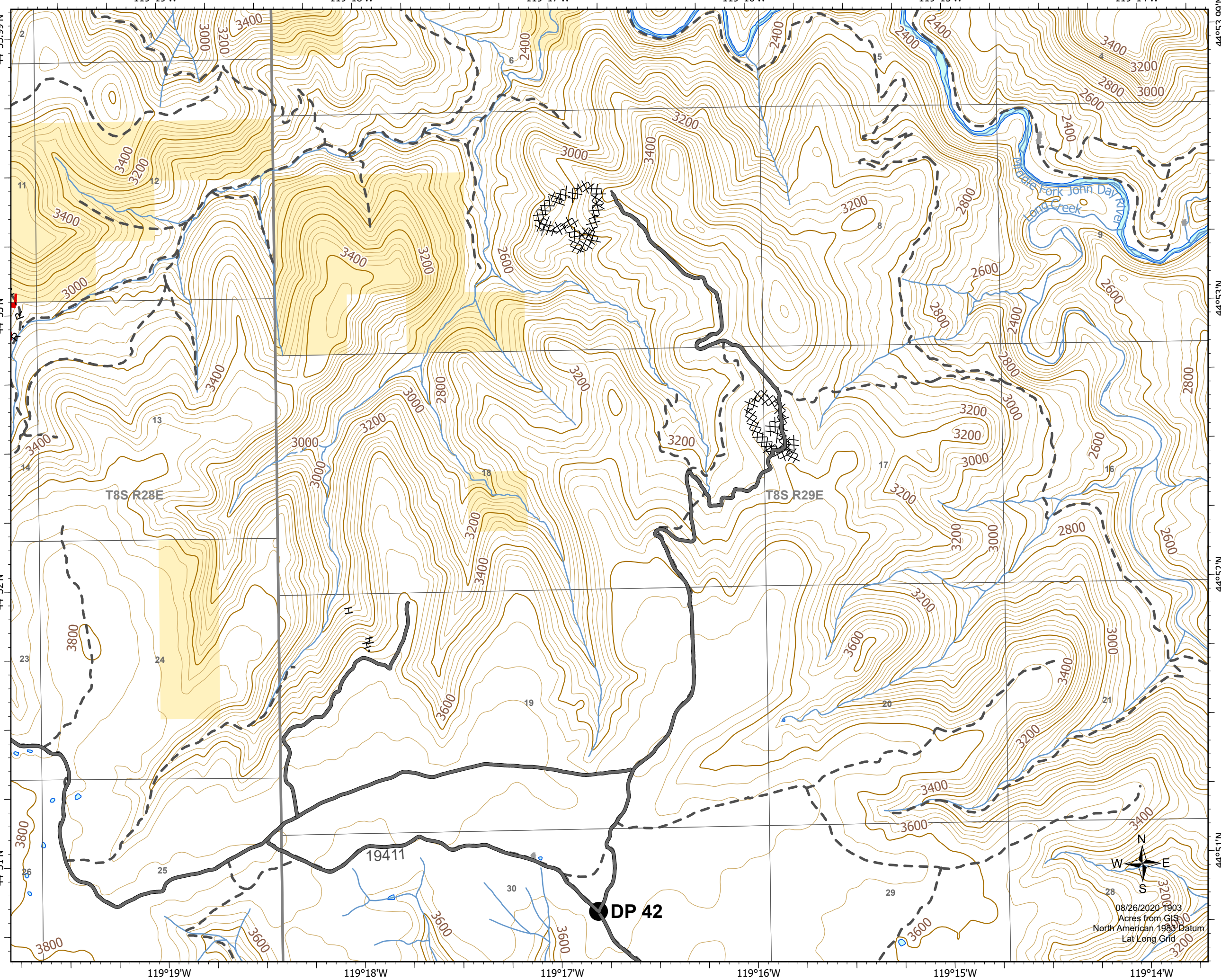
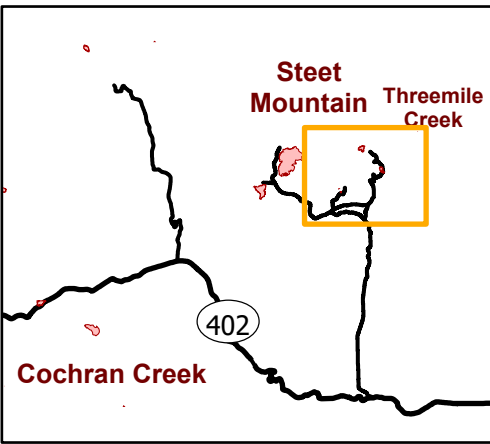


08/26/2020 1003
 Acres from GIS
 North American Datum
 UTM
 LaI Long Grid
42

IAP
Steet Mountain
OR952S020279
08/27/2020
total 699 acres on 08/26/2020
IAP Page: Threemile



- Drop Point
- Uncontrolled Fire Edge
- Completed Dozer Line
- Completed Hand Line
- Road as Completed Line
- Access Road
- Structure
- Stream
- Surfaced Road
- Dirt Road
- PLSS Township
- PLSS Section
- Waterbody
- Bureau of Land Management

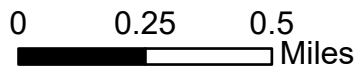


08/26/2020 1903
 Acres from GIS
 North American 1983 Datum
 Lat Long Grid

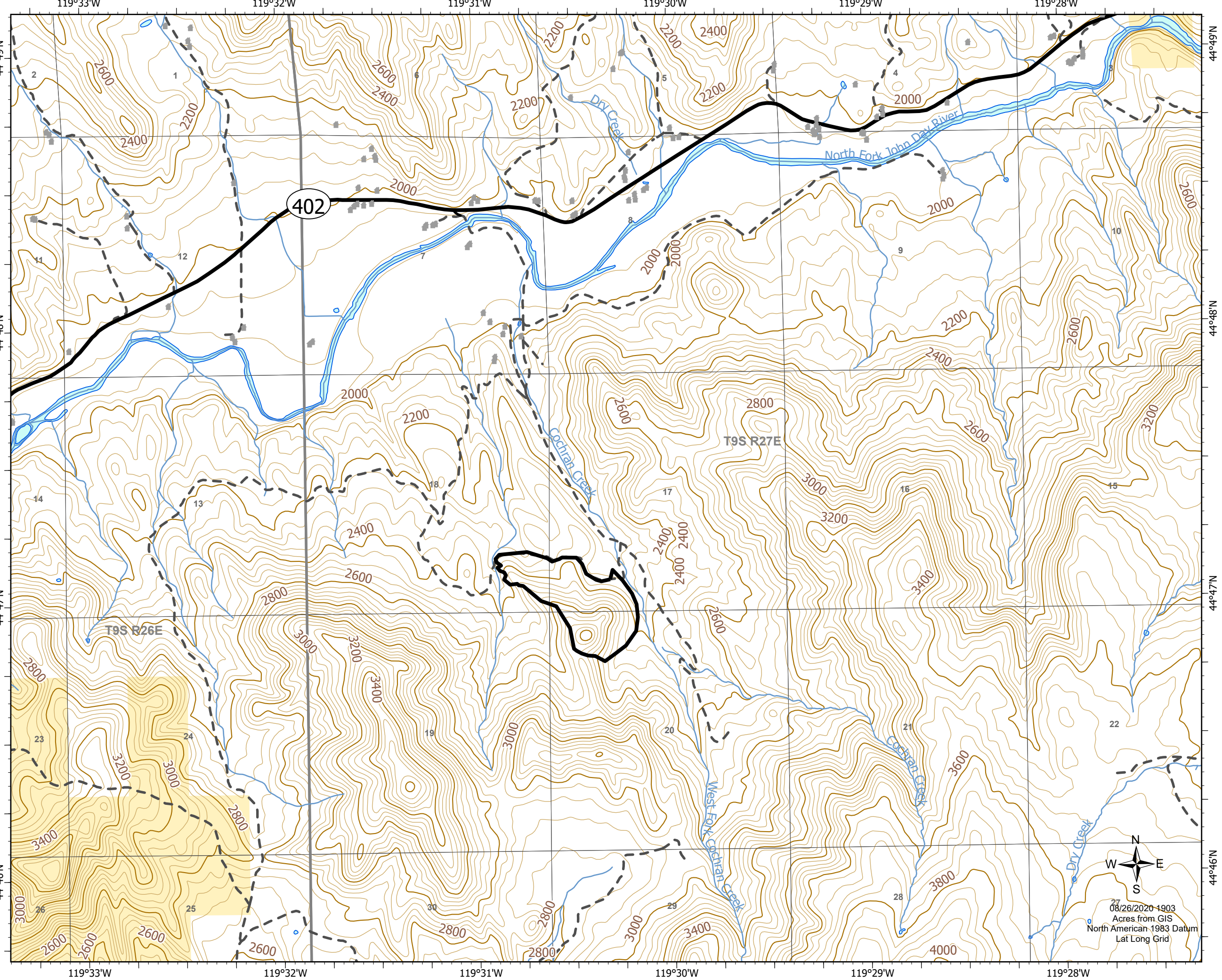
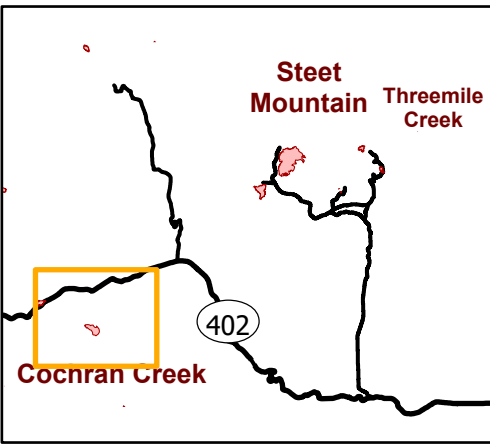
IAP
Steet Mountain
OR952S020279
08/27/2020

total 699 acres on 08/26/2020

IAP Page: Cochran Creek



- Contained Line
- Structure
- Stream
- Federal or State highway
- Surfaced Road
- Dirt Road
- PLSS Township
- PLSS Section
- Waterbody
- Bureau of Land Management



08/26/2020 1903
 Acres from GIS
 North American 1983 Datum
 Lat Long Grid