

Operations

Steet Mountain
OR952S020279
08/27/2020

total 699 acres on 08/26/2020

- Uncontrolled Fire Edge
- Completed Dozer Line
- Completed Hand Line
- Road as Completed Line
- Access Road
- Completed Burnout
- Wildfire Daily Fire Perimeter
- Structure
- Stream
- Interstate
- Federal or State highway
- Surfaced Road
- Dirt Road
- Hiking trail
- In UGB
- Highway exit
- Airstrip
- Mainline Rd
- Blocked
- 4wd trail
- Not a road

Mountain

Threemile Creek

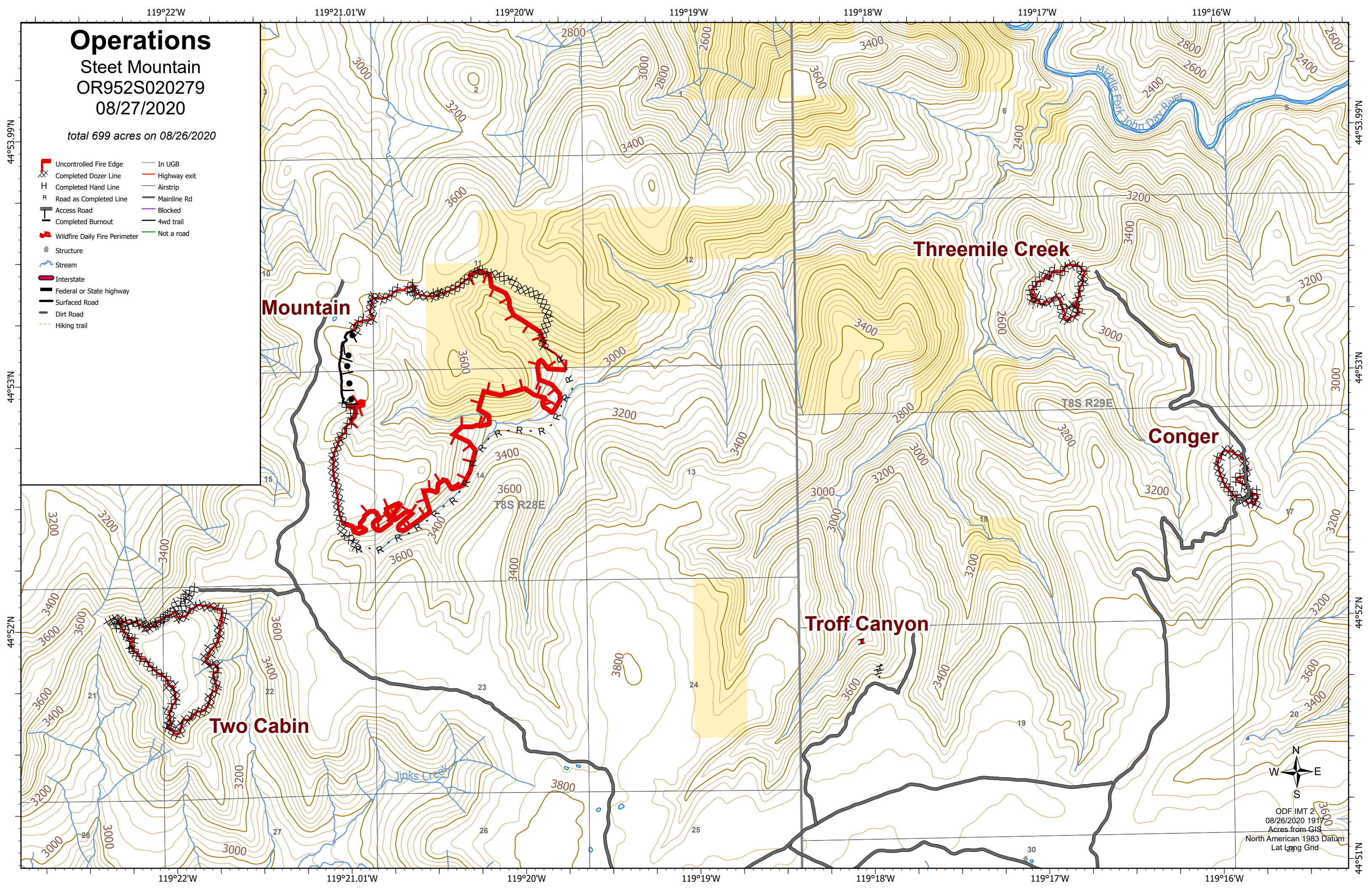
Conger

Troff Canyon

Two Cabin



ODF IMT 2
08/26/2020 1917
Acres from GIS
North American 1983 Datum
Lat Long Grid

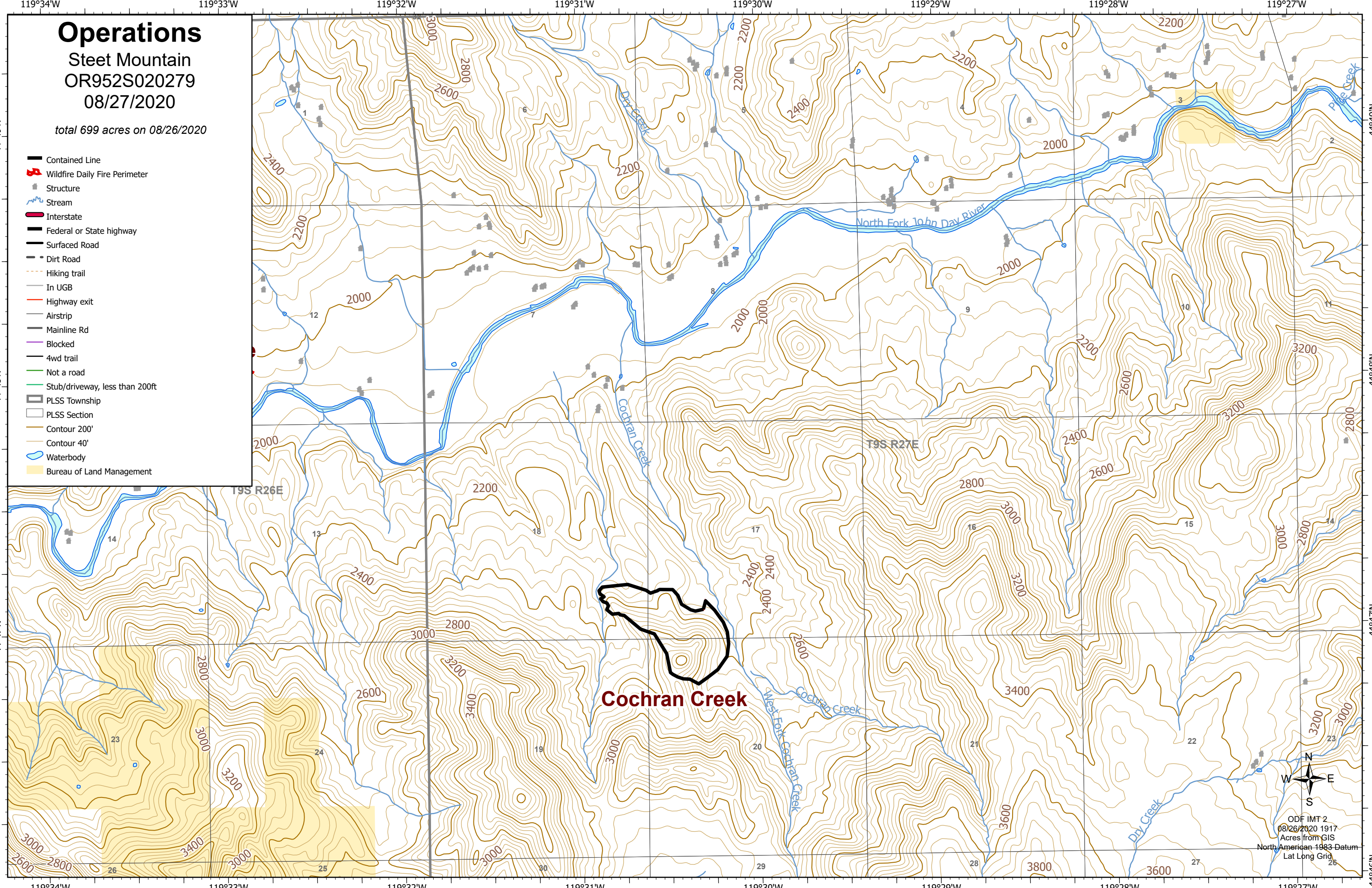


Operations

Steet Mountain
OR952S020279
08/27/2020

total 699 acres on 08/26/2020

- Contained Line
- 🔥 Wildfire Daily Fire Perimeter
- ▣ Structure
- 🌊 Stream
- 🛣 Interstate
- 🛣 Federal or State highway
- 🛣 Surfaced Road
- 🛣 Dirt Road
- 🛣 Hiking trail
- In UGB
- 🛣 Highway exit
- Airstrip
- Mainline Rd
- 🛣 Blocked
- 🛣 4wd trail
- 🛣 Not a road
- 🛣 Stub/driveway, less than 200ft
- ▣ PLS Township
- ▣ PLS Section
- 🟡 Contour 200'
- 🟡 Contour 40'
- 🌊 Waterbody
- 🟡 Bureau of Land Management



ODF IMT 2
08/26/2020 1917
Acres from GIS
North American 1983 Datum
Lat Long Grid