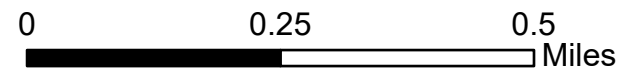


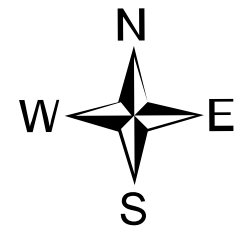
Operations

Steet Mountain
OR952S020279

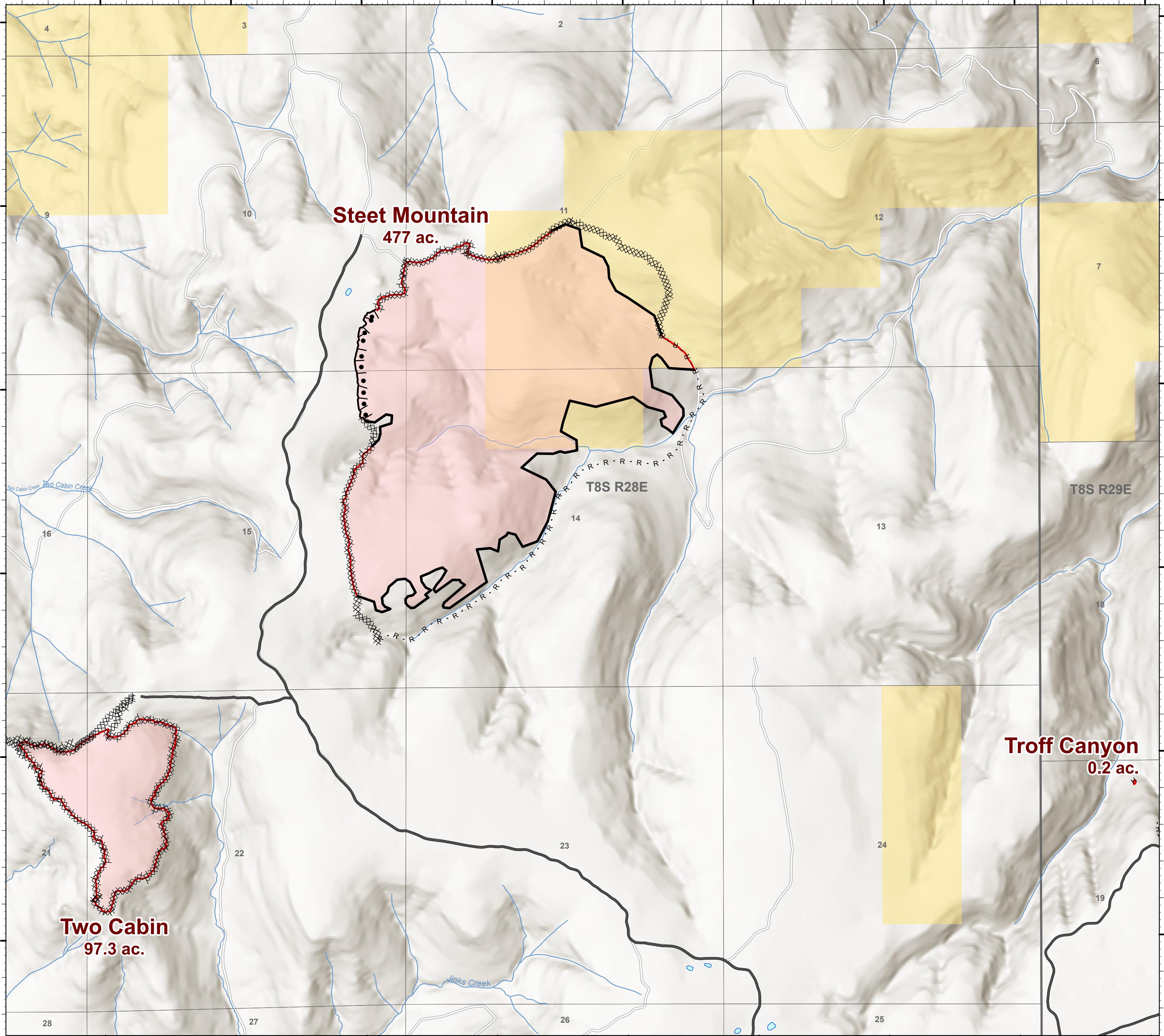
699 acres at 08/26/2020



- Contained Line
- XXXXX Completed Dozer Line
- H · H · H Completed Hand Line
- R · R · R Road as Completed Line
- Access Road
- | · | · Completed Burnout
- Wildfire Daily Fire Perimeter
- Interstate
- Federal or State highway
- Surfaced Road
- Dirt Road
- Hiking trail
- In UGB
- Highway exit
- Airstrip
- Mainline Rd
- Blocked
- 4wd trail
- Not a road
- Stub/driveway, less than 200ft
- Stream
- PLSS Township
- PLSS Section
- Waterbody
- BLM



ODF IMT 2
08/27/2020 1308
Acres from GIS
North American 1983 Datum
Lat Long Grid

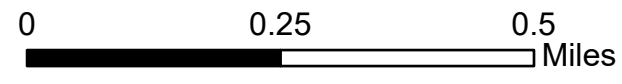


119°20'W

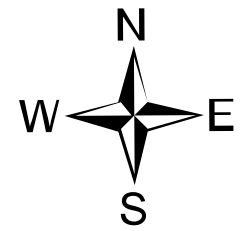
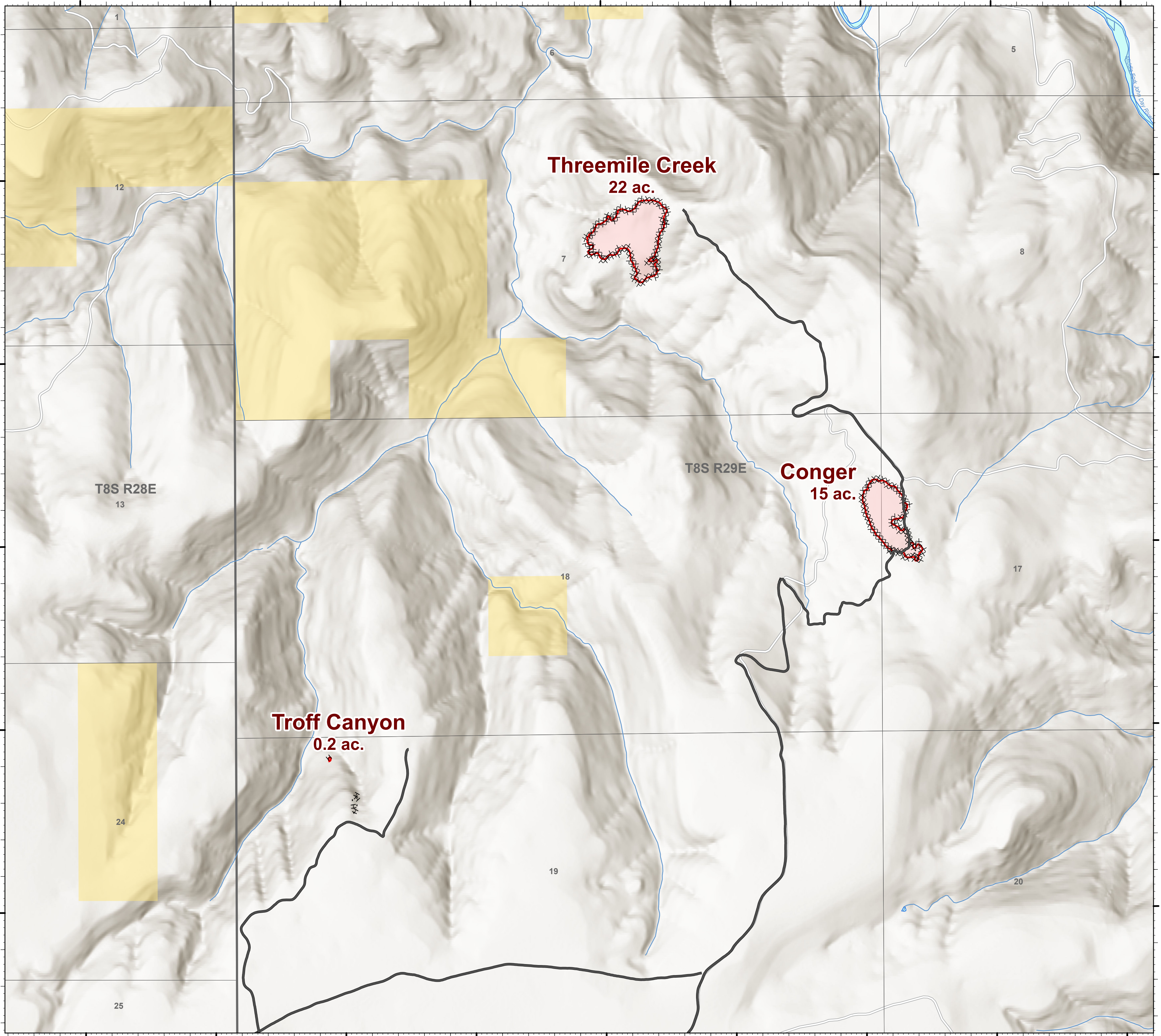
Operations

Steet Mountain
OR952S020279

699 acres at 08/26/2020



- XXXXXX Completed Dozer Line
- H · H · H Completed Hand Line
- Access Road
- 🔴 Wildfire Daily Fire Perimeter
- 🔴 Interstate
- 🖤 Federal or State highway
- Surfaced Road
- - - Dirt Road
- ⋯ Hiking trail
- In UGB
- 🔴 Highway exit
- Airstrip
- Mainline Rd
- 🟪 Blocked
- 4wd trail
- 🟢 Not a road
- 🟢 Stub/driveway, less than 200ft
- 🌊 Stream
- ▭ PLS Township
- ▭ PLS Section
- 💧 Waterbody
- 🟡 BLM

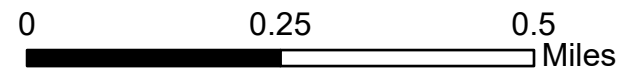


ODF IMT 2
08/27/2020 1308
Acres from GIS
North American 1983 Datum
Lat Long Grid

Operations

Steet Mountain
OR952S020279

699 acres at 08/26/2020



- Completed Dozer Line
- Wildfire Daily Fire Perimeter
- Structure
- Interstate
- Federal or State highway
- Surfaced Road
- Dirt Road
- Hiking trail
- In UGB
- Highway exit
- Airstrip
- Mainline Rd
- Blocked
- 4wd trail
- Not a road
- Stub/driveway, less than 200ft
- Stream
- PLSS Township
- PLSS Section
- Waterbody
- BLM



ODF IMT 2
08/27/2020 1309
Acres from GIS
North American 1983 Datum
Lat Long Grid

