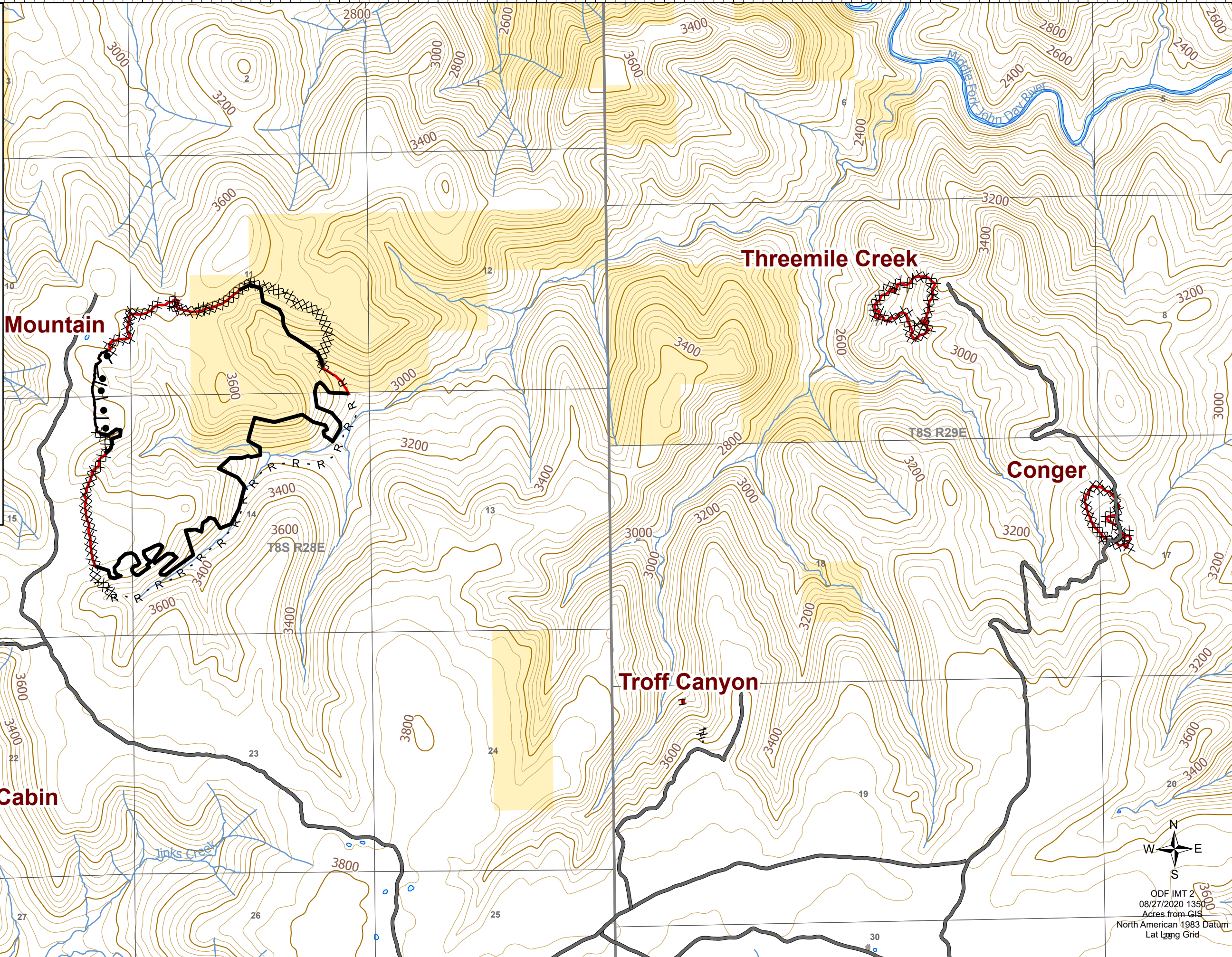


# Operations

Steet Mountain  
OR952S020279

total 699 acres on 08/26/2020

- Contained Line
- XX Completed Dozer Line
- H Completed Hand Line
- R Road as Completed Line
- Access Road
- Completed Burnout
- 🔥 Wildfire Daily Fire Perimeter
- 🏠 Structure
- 🌊 Stream
- 🚗 Interstate
- 🛣️ Federal or State highway
- 🛞 Surfaced Road
- 🛝 Dirt Road
- 👤 Hiking trail
- In UGB
- 🛣️ Highway exit
- Airstrip
- Mainline Rd
- Blocked
- 4wd trail
- Not a road



ODF IMT 2  
08/27/2020 1350  
Acres from GIS  
North American 1983 Datum  
Lat Long Grid

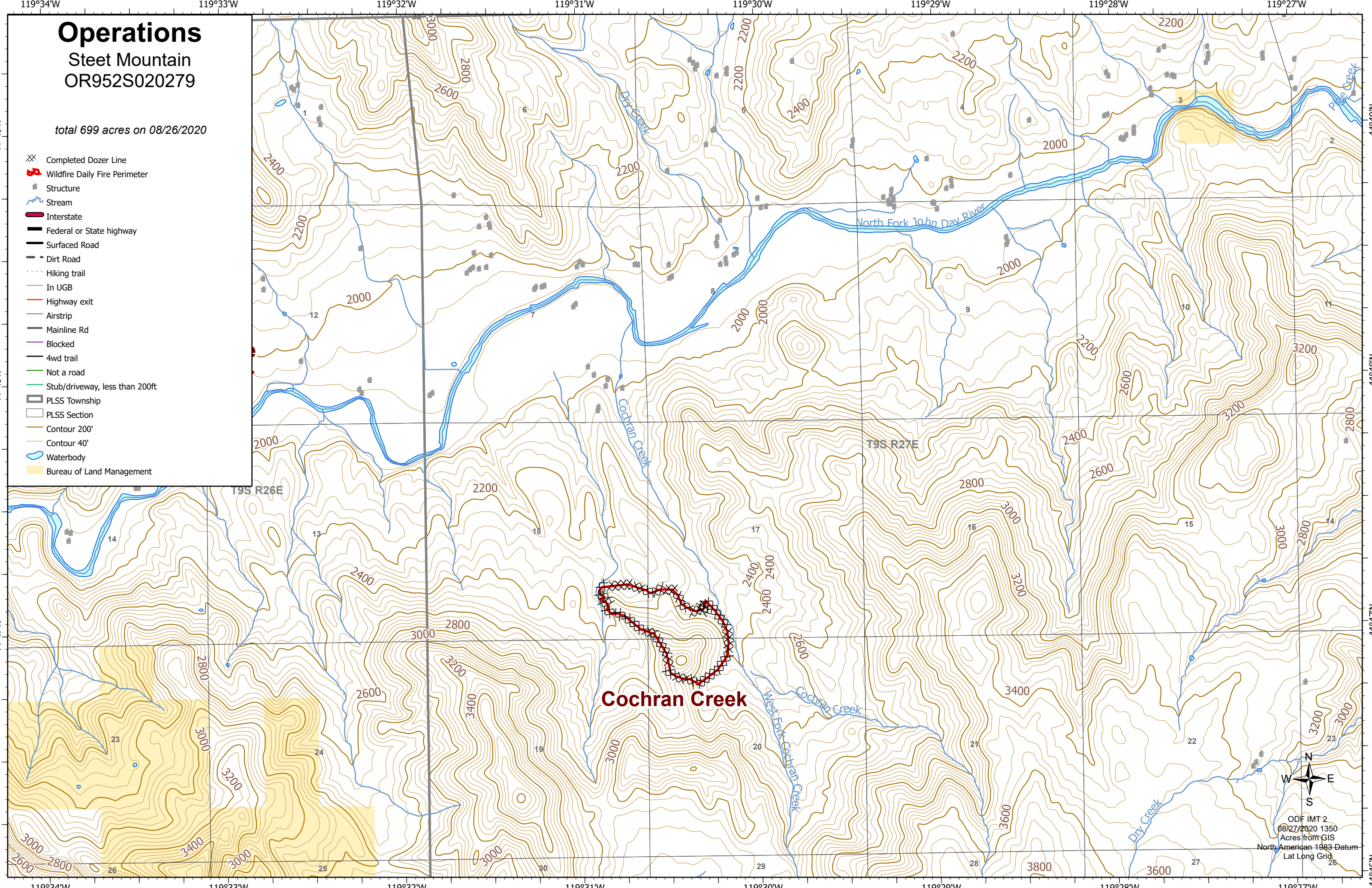


# Operations

## Steet Mountain OR952S020279

total 699 acres on 08/26/2020

- XX Completed Dozer Line
- 🔥 Wildfire Daily Fire Perimeter
- 🏠 Structure
- 🌊 Stream
- 🛣 Interstate
- 🛣 Federal or State highway
- 🛣 Surfaced Road
- 🛣 Dirt Road
- 🛣 Hiking trail
- 🛣 In UGB
- 🛣 Highway exit
- 🛣 Airstrip
- 🛣 Mainline Rd
- 🛣 Blocked
- 🛣 4wd trail
- 🛣 Not a road
- 🛣 Stub/driveway, less than 200ft
- 🏠 PLS Township
- 🏠 PLS Section
- 🏠 Contour 200'
- 🏠 Contour 40'
- 🌊 Waterbody
- 🟡 Bureau of Land Management



ODF IMT 2  
08/27/2020 1350  
Acres from GIS  
North American 1983 Datum  
Lat Long Grid