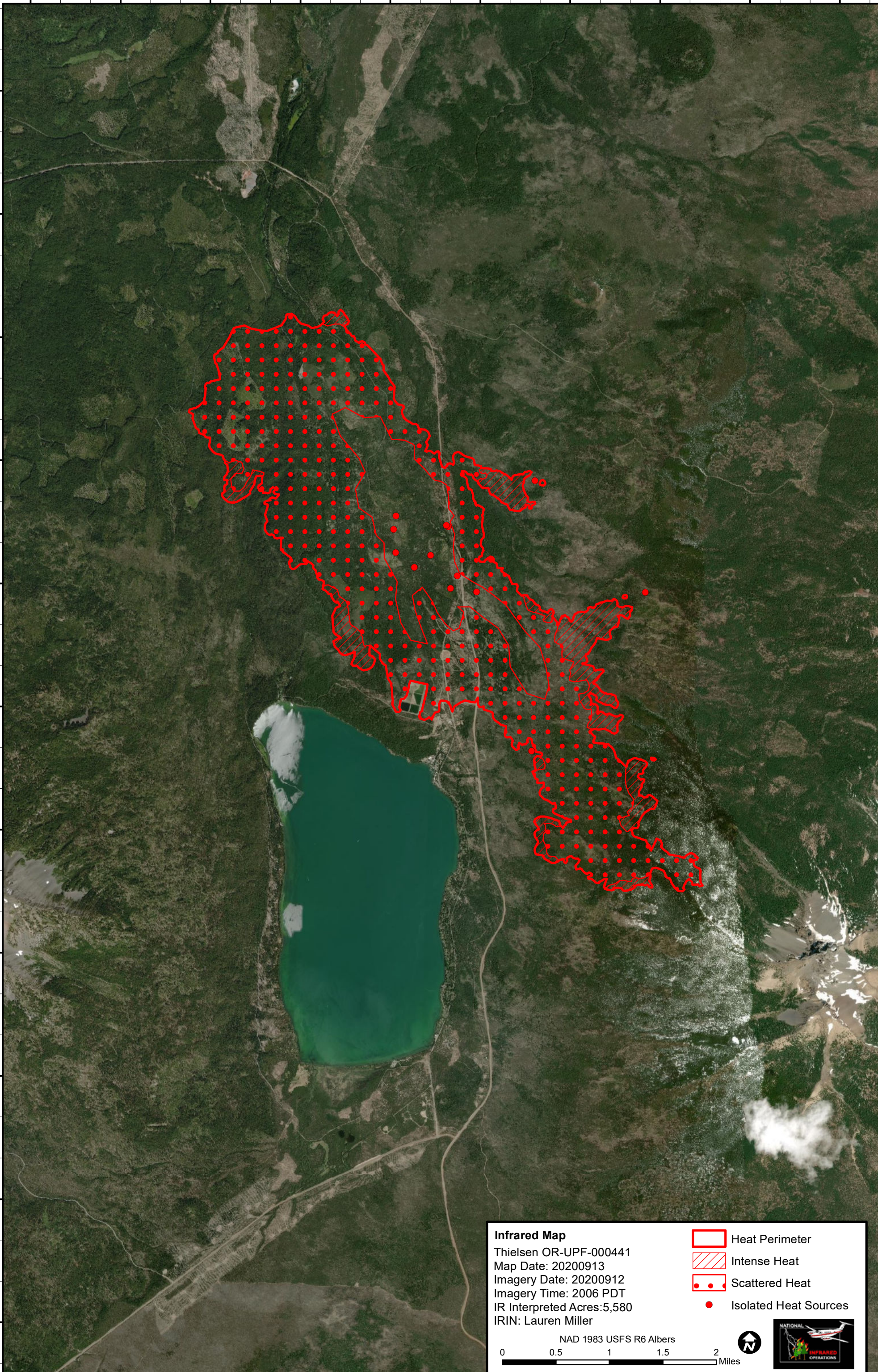






122°13'0"W 122°12'0"W 122°11'0"W 122°10'0"W 122°9'0"W 122°8'0"W 122°7'0"W 122°6'0"W 122°5'0"W 122°4'0"W

43°16'0"N
43°15'0"N
43°14'0"N
43°13'0"N
43°12'0"N
43°11'0"N
43°10'0"N
43°9'0"N
43°8'0"N
43°7'0"N
43°6'0"N

43°16'0"N
43°15'0"N
43°14'0"N
43°13'0"N
43°12'0"N
43°11'0"N
43°10'0"N
43°9'0"N
43°8'0"N
43°7'0"N
43°6'0"N





Infrared Map
 Thielsen OR-UPF-000441
 Map Date: 20200913
 Imagery Date: 20200912
 Imagery Time: 2006 PDT
 IR Interpreted Acres: 5,580
 IRIN: Lauren Miller

-  Heat Perimeter
-  Intense Heat
-  Scattered Heat
-  Isolated Heat Sources

NAD 1983 USFS R6 Albers

0 0.5 1 1.5 2 Miles

122°12'0"W 122°11'0"W 122°10'0"W 122°9'0"W 122°8'0"W 122°7'0"W 122°6'0"W 122°5'0"W 122°4'0"W