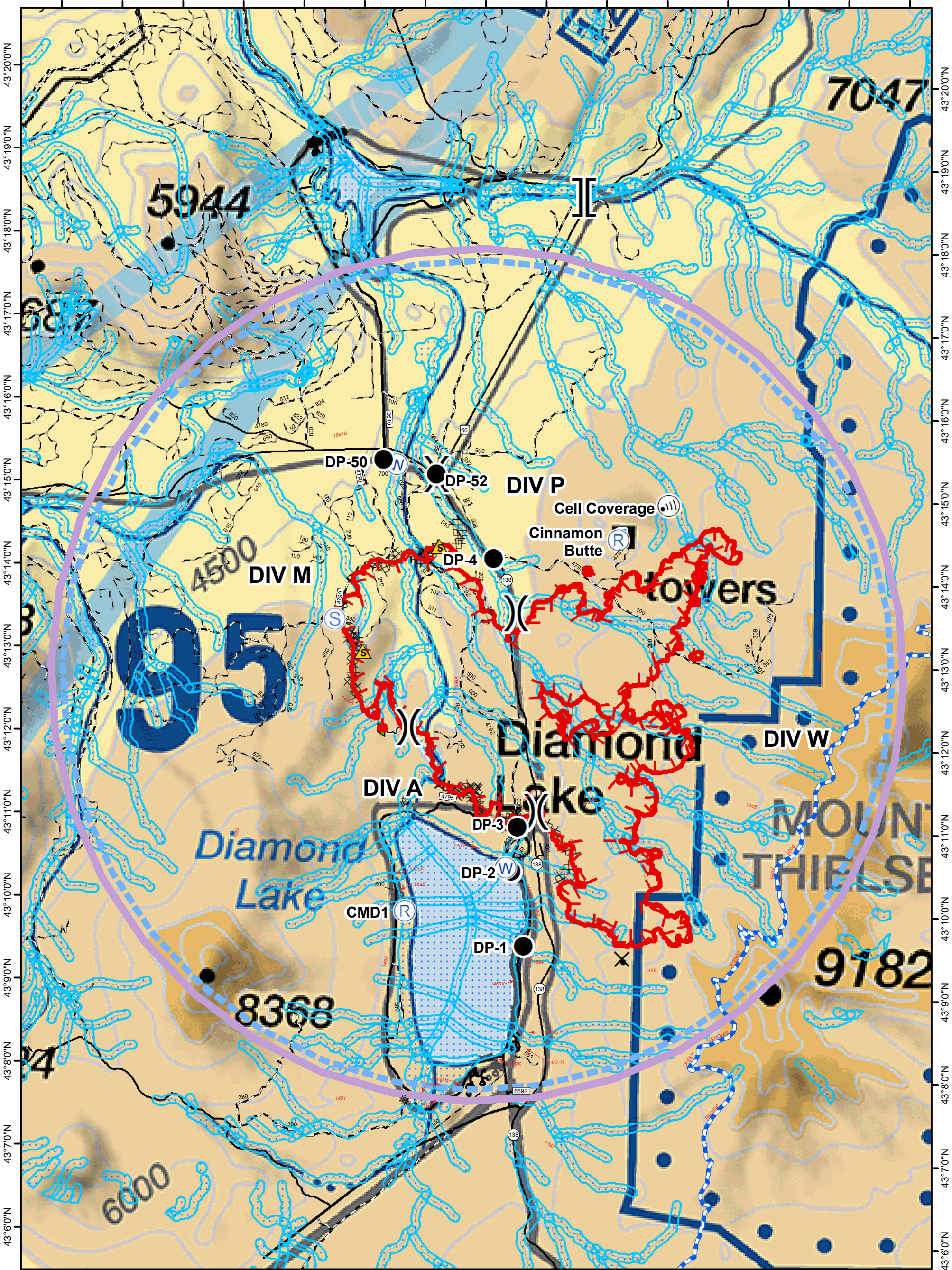


122°16'0"W 122°15'0"W 122°14'0"W 122°13'0"W 122°12'0"W 122°11'0"W 122°10'0"W 122°9'0"W 122°8'0"W 122°7'0"W 122°6'0"W 122°5'0"W 122°4'0"W 122°3'0"W 122°2'0"W

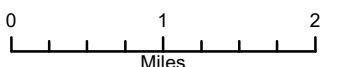


122°16'0"W 122°15'0"W 122°14'0"W 122°13'0"W 122°12'0"W 122°11'0"W 122°10'0"W 122°9'0"W 122°8'0"W 122°7'0"W 122°6'0"W 122°5'0"W 122°4'0"W 122°3'0"W 122°2'0"W

- Temporary Flight Restriction
- Drop Point
- Internet Access
- Lookout
- Repeater
- Safety Zone
- Staging Area
- Water Source
- Water Development or Draft Site
- Division Break
- Branch Break
- Uncontrolled Fire Edge
- Completed Dozer Line
- Completed Hand Line
- Road as Completed Line
- Completed Plow Line
- Proposed Dozer Line
- Wildfire Daily Fire Perimeter
- Umpqua_Retardant_Avoidance

Thielsen Fire Aviation Map

OR-UPF-000441
Approx 8,645 IR acres
@ 2122 on 9/15
1% contained
Operational Shift: 9/17/20 Day



Created by: C.Evans GIS
Date Created: 9/16/2020 at 1900