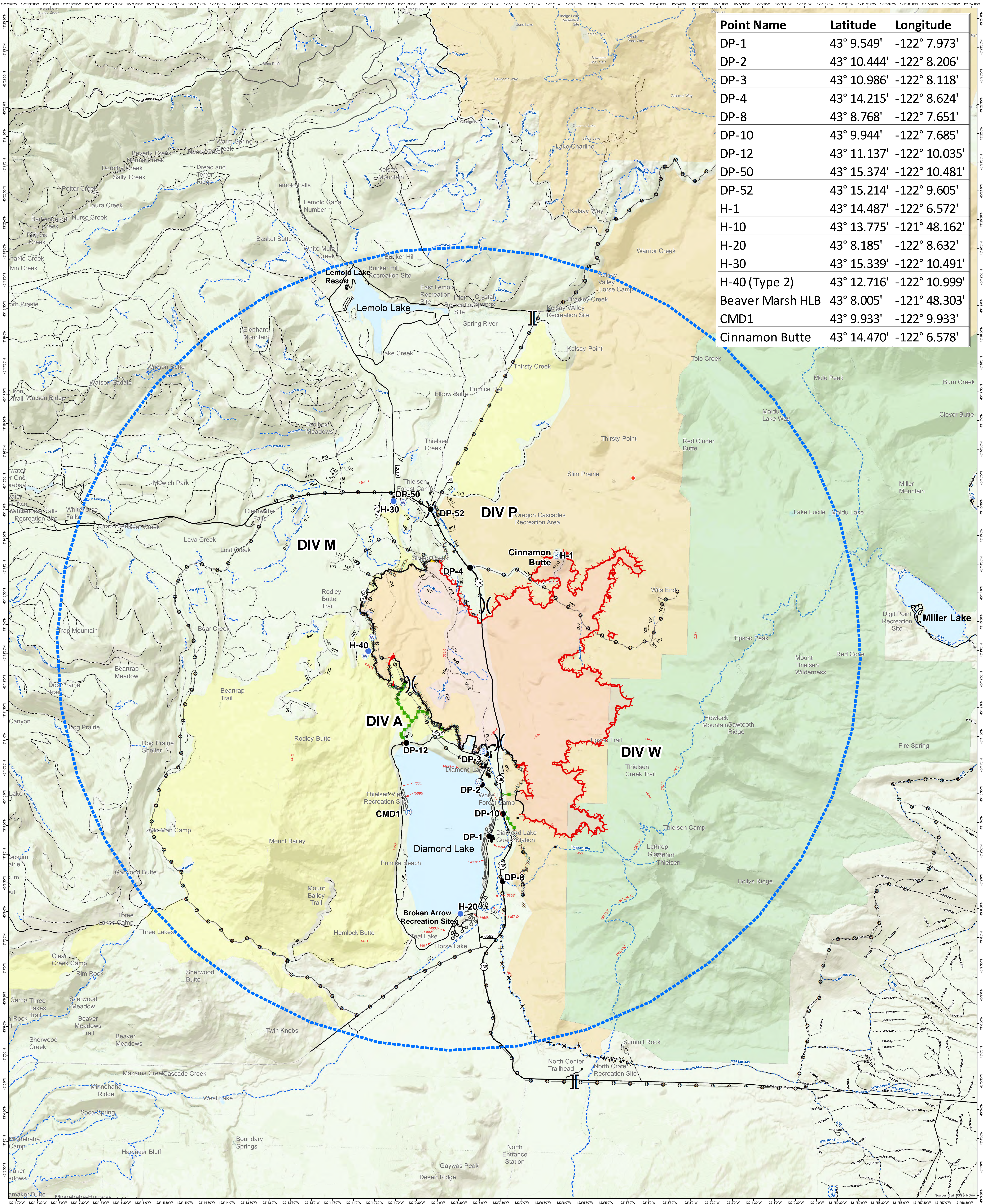


Point Name	Latitude	Longitude
DP-1	43° 9.549'	-122° 7.973'
DP-2	43° 10.444'	-122° 8.206'
DP-3	43° 10.986'	-122° 8.118'
DP-4	43° 14.215'	-122° 8.624'
DP-8	43° 8.768'	-122° 7.651'
DP-10	43° 9.944'	-122° 7.685'
DP-12	43° 11.137'	-122° 10.035'
DP-50	43° 15.374'	-122° 10.481'
DP-52	43° 15.214'	-122° 9.605'
H-1	43° 14.487'	-122° 6.572'
H-10	43° 13.775'	-121° 48.162'
H-20	43° 8.185'	-122° 8.632'
H-30	43° 15.339'	-122° 10.491'
H-40 (Type 2)	43° 12.716'	-122° 10.999'
Beaver Marsh HLB	43° 8.005'	-121° 48.303'
CMD1	43° 9.933'	-122° 9.933'
Cinnamon Butte	43° 14.470'	-122° 6.578'

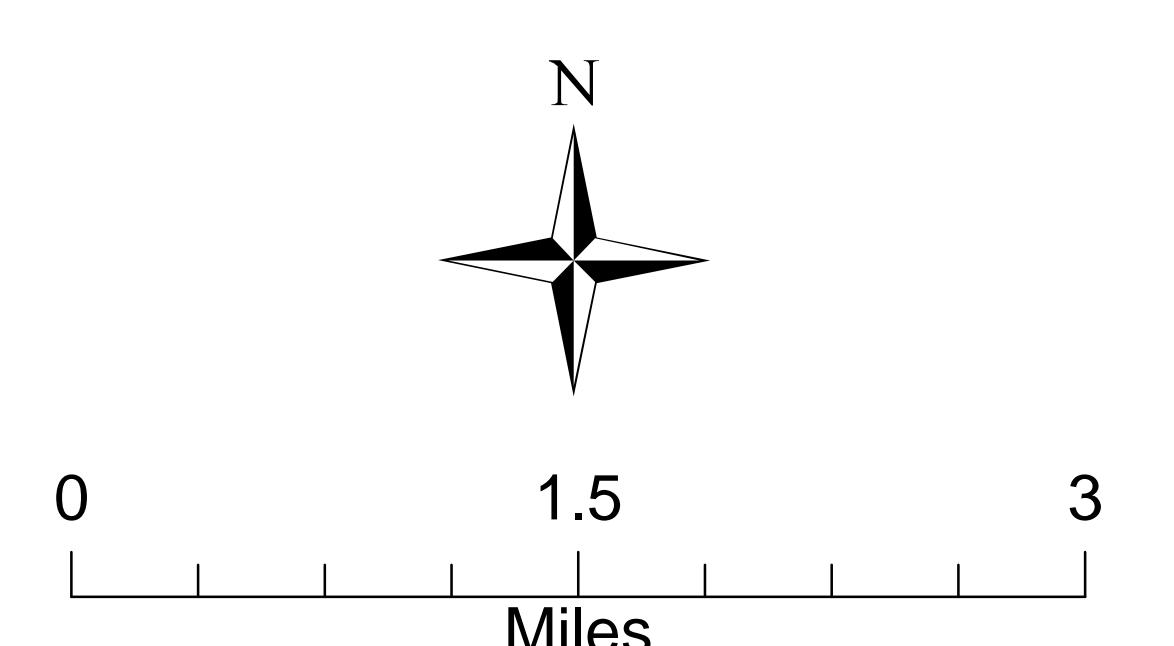


- - - IA Response Area
- Drop Point
- Helispot
- Hot Spot
- + Lookout
- R Repeater
- ▲ Safety Zone
- S Staging Area
- W Water Source
- ⊕ Water Development or Draft Site
- Other
-) Division Break
-]] Branch Break
- Uncontrolled Fire Edge
- Contained Line
- Completed Dozer Line
- Completed Hand Line
- Road as Completed Line
- Completed Plow Line
- x Proposed Dozer Line
- Fire Break Planned or Incomplete
- Escape Route
- Other
- Wildfire Daily Fire Perimeter
- Wilderness
- MVUM_Trails

Thielsen Fire IA Map

OR-UPF-000441
Approx 9,916 GIS/IR acres
@ 0600 on 9/21
26% contained

Operational Shift: 9/23/20 Day



Created by: C.Vose GISS
Date Created: 9/22/2020 at 1855